

- LEGEND**
- 1. Easement
  - 2. Easement
  - 3. Easement
  - 4. Easement
  - 5. Easement
  - 6. Easement
  - 7. Easement
  - 8. Easement
  - 9. Easement
  - 10. Easement
  - 11. Easement
  - 12. Easement
  - 13. Easement
  - 14. Easement
  - 15. Easement
  - 16. Easement
  - 17. Easement
  - 18. Easement
  - 19. Easement
  - 20. Easement
  - 21. Easement
  - 22. Easement
  - 23. Easement
  - 24. Easement
  - 25. Easement
  - 26. Easement
  - 27. Easement
  - 28. Easement
  - 29. Easement
  - 30. Easement
  - 31. Easement
  - 32. Easement
  - 33. Easement
  - 34. Easement
  - 35. Easement
  - 36. Easement
  - 37. Easement
  - 38. Easement
  - 39. Easement
  - 40. Easement
  - 41. Easement
  - 42. Easement
  - 43. Easement
  - 44. Easement
  - 45. Easement
  - 46. Easement
  - 47. Easement
  - 48. Easement
  - 49. Easement
  - 50. Easement
  - 51. Easement
  - 52. Easement
  - 53. Easement
  - 54. Easement
  - 55. Easement
  - 56. Easement
  - 57. Easement
  - 58. Easement
  - 59. Easement
  - 60. Easement
  - 61. Easement
  - 62. Easement
  - 63. Easement
  - 64. Easement
  - 65. Easement
  - 66. Easement
  - 67. Easement
  - 68. Easement
  - 69. Easement
  - 70. Easement
  - 71. Easement
  - 72. Easement
  - 73. Easement
  - 74. Easement
  - 75. Easement
  - 76. Easement
  - 77. Easement
  - 78. Easement
  - 79. Easement
  - 80. Easement
  - 81. Easement
  - 82. Easement
  - 83. Easement
  - 84. Easement
  - 85. Easement
  - 86. Easement
  - 87. Easement
  - 88. Easement
  - 89. Easement
  - 90. Easement
  - 91. Easement
  - 92. Easement
  - 93. Easement
  - 94. Easement
  - 95. Easement
  - 96. Easement
  - 97. Easement
  - 98. Easement
  - 99. Easement
  - 100. Easement

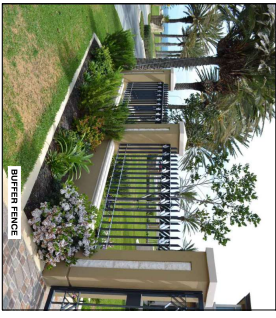
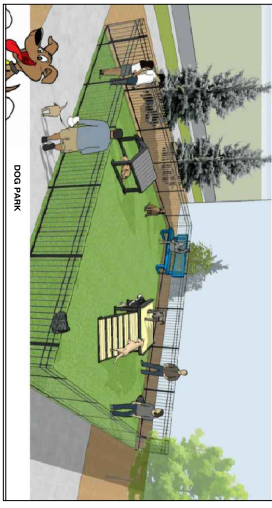
THIS SURVEY WAS PREPARED BY GUY HALE, LAND SURVEYING, INC. FOR THE PURPOSES OF A BASE FLOOD INSURANCE RATE MAP. THE SURVEY IS BASED ON THE FOLLOWING INFORMATION: 1. AERIAL PHOTOGRAPHY DATED 2018. 2. BASES OF BEARINGS AND DISTANCES AS SHOWN ON A SURVEY PREPARED BY GUY HALE, LAND SURVEYING, INC. ON JULY 15, 2015. 3. NO UNDERGROUND LOCATIONS UNLESS SHOWN HEREON.

**GUY HALE, LAND SURVEYING**  
406 So. Arcturas Ave. Ste 1  
Clearwater, FL 33765  
BOUNDARY - TOPOGRAPHIC - CONSTRUCTION STAKEOUT  
727-734-4286 ghsurveyor@gmail.com

**SURVEYOR'S CERTIFICATE**  
CERTIFIED AS A BOUNDARY SURVEY UNLESS IT BEARS THE SIGNATURE AND THE SEAL OF A LICENSED SURVEYOR. THIS DRAWING, SKETCH, PLAN OR MAP IS FOR INFORMATIONAL PURPOSES ONLY AND IS NOT FINAL.  
GUY D. HALE, PLS No.4628  
DATE 09-27-17

**BOUNDARY SURVEY**  
PREPARED FOR:  
ROYAL FIVE HOSPITALITY INC  
DATE OF FIELD SURVEY: 4-23  
DRAWING# 2017176.DWG  
Checked by GDH  
Drawn by GDH  
Project No. 2017176  
PAGE 1 OF 1

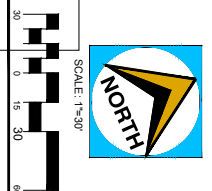
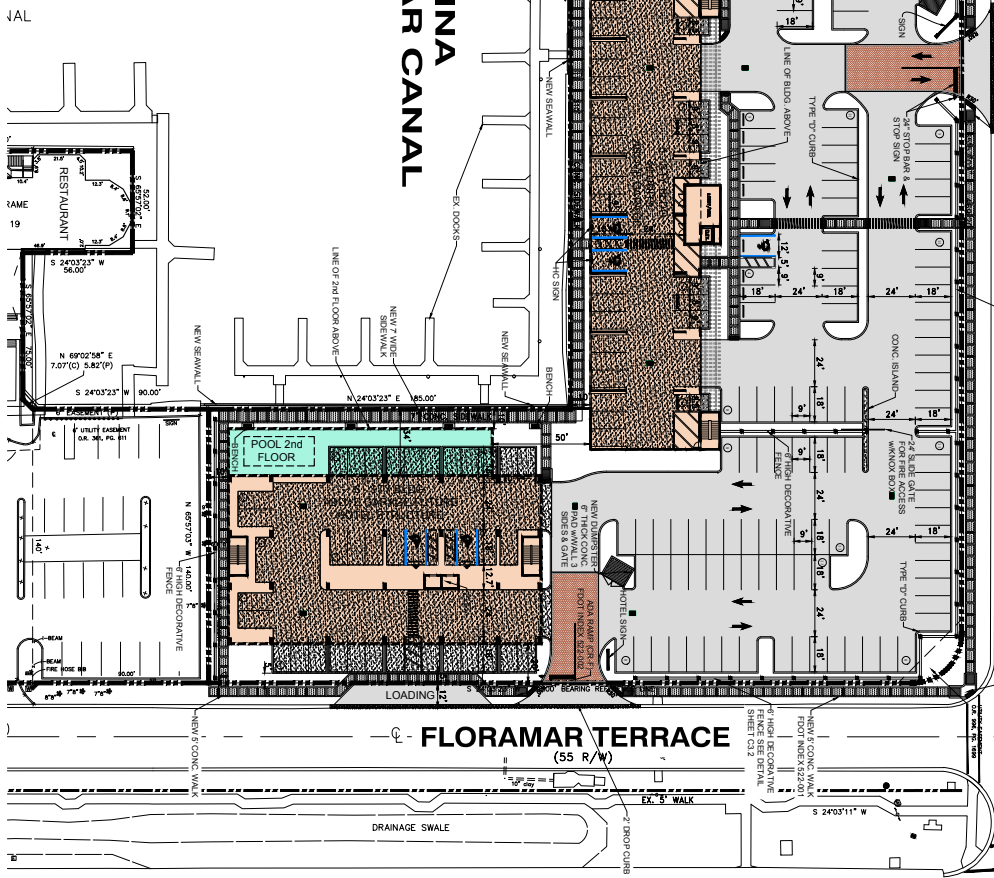
Revisions	Date	Description	By
4			
3			
2			
1			
0			

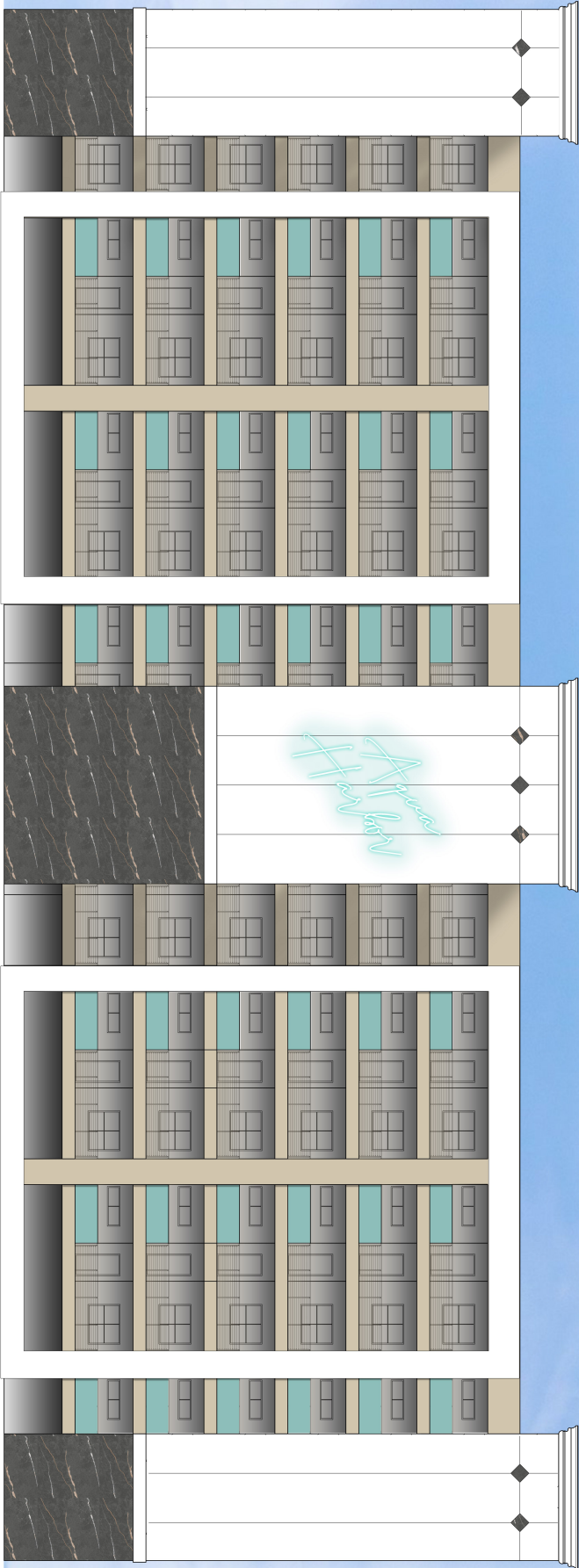


**LEGEND**

[Pattern]	NEW BUILDING
[Pattern]	NEW 2nd FLOOR
[Pattern]	APARTMENT LEVEL
[Pattern]	NEW ASPHL. & BASE
[Pattern]	NEW CONC. WALK
[Pattern]	BRICK PAVEN
[Pattern]	NEW 6" THICK CONC.
[Pattern]	3000 PSI
[Pattern]	BUFFER WALL

**MARINA  
FLOOR A MAR CANAL**





REAR / NORTH ELEVATION  
SCALE 1/8" = 1'-0"

AQUA HARBOR RESORT  
5015 US HIGHWAY 18  
NEW FORT RICHEY, FL. 34652

ELEVATIONS

Rev.	Date	Issue			

CONFIDENTIAL

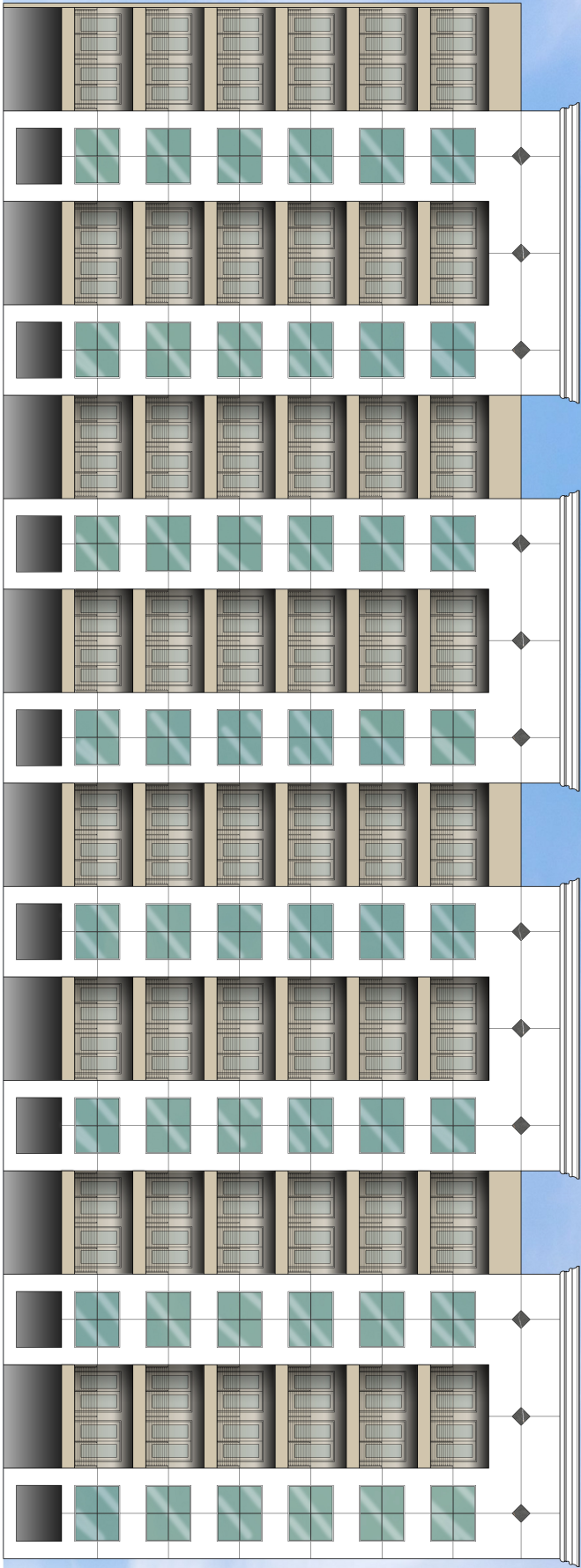
THIS DOCUMENT IS THE PROPERTY OF ROBERT P. RESCH, III ARCHITECT. IT IS TO BE USED ONLY FOR THE PROJECT AND NOT BE LOANED, REPRODUCED, COPIED, OR IN ANY MANNER DISSEMINATED TO ANY OTHER PARTY WITHOUT THE WRITTEN PERMISSION OF ROBERT P. RESCH, III ARCHITECT.



**ROBERT P. RESCH, III**  
ARCHITECT  
2563 Gulf To Bay Blvd, Suite 100  
Clearwater, Florida 33755  
727-292-1854 Office    727-109-0630 Cell  
reschiii@verizon.net    reschiii@verizon.net







FRONT / SOUTH ELEVATION  
SCALE: 1/8" = 1'-0"

AQUA HARBOR RESORT  
5015 US HIGHWAY 19  
NEW PORT RICHEY, FL. 34652

ELEVATIONS

Rev.	Date	Item

CONFIDENTIAL  
"An architectural drawing is a contract document" and must  
be the property of Robert P. Resch, III, Architect



ROBERT P. RESCH, III  
ARCHITECT  
2965 Gulf To Bay Blvd., Suite 100  
Clearwater, Florida 33755  
727-320-1854 Office 727-109-0630 Cell  
reschiii@verizon.net rescharchitecture.com



DATE: 09-09-2021  
DRAWN BY: DBR  
CHECKED BY: A2  
21-0000