

Exhibit A

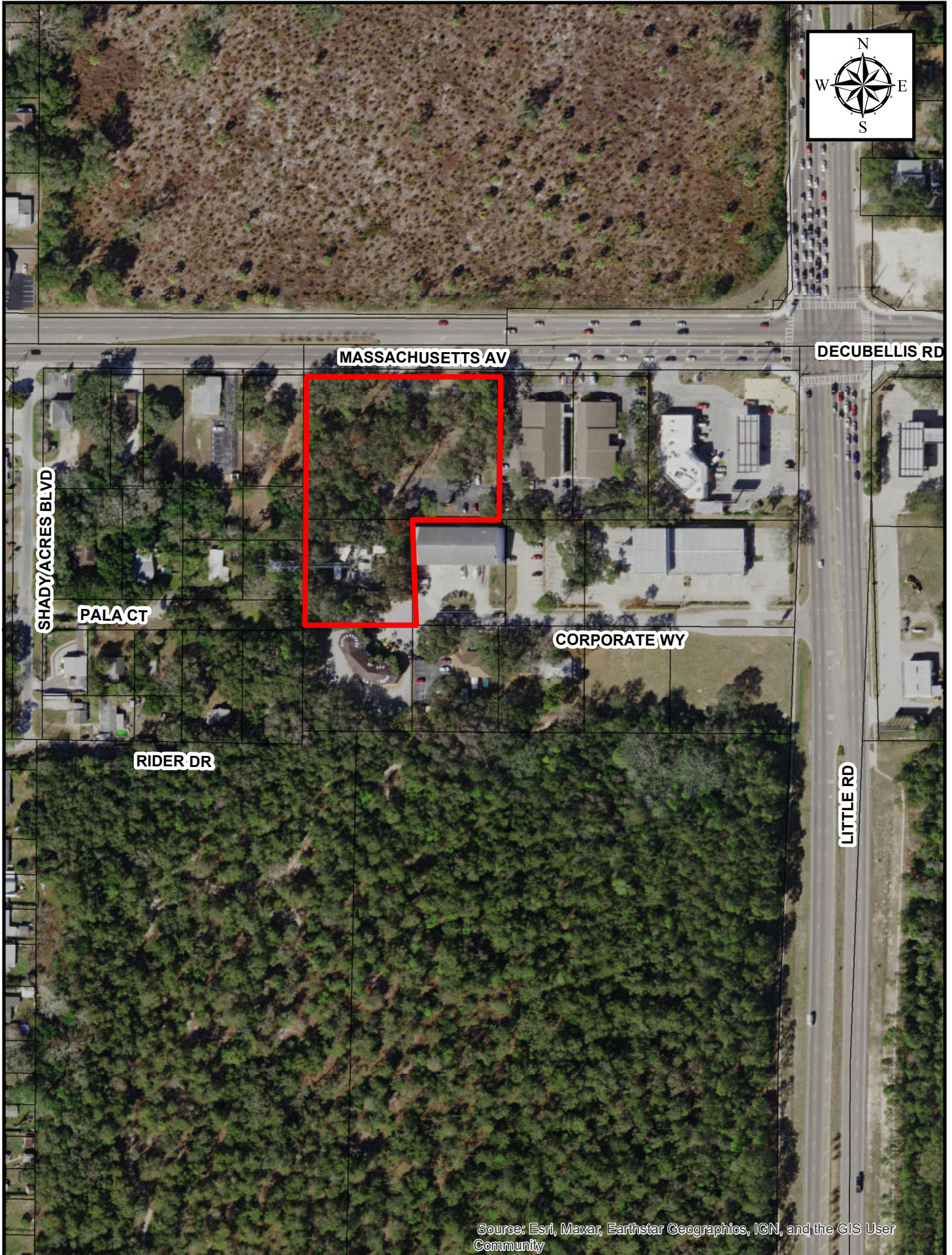


EXHIBIT B

Legal Description

02-26-16-0010-01600-0000

Assessed in Section 02, Township 26 South, Range 16 East
of Pasco County, Florida

PORT RICHEY LAND CO PB 1 PG 60 POR TR 16 SEC 2 DESC AS COM NE
COR NW1/4 TH ALG EAST BDY LN NW1/4 S0DG26'23"W 40 FT TO SLY
R/W LN MOON LAKE RD TH ALG SLY R/W LN N89DEG41'15"W 560F
FOR POB TH S0DEG26'23"W 250 FT TH ALG SLY BDY OF NORTH 290 FT
OF TR 16 N89DEG41'15"W 321.95 FT TO WEST BDY TR 16 TH ALG
WEST BDY 16 N0DEG23'28"E 250 FT TO SLY R/W LN MOON LAKE RD
TH ALG SLY R/W LN S89DG41'15"E 322.16 FT TO POB LESS COM N1/4
COR OF SEC TH N89DEG49'42"W 560 FT TH S0DG18'50"W 40 FT TO PT
ON SLY R/W LN OF CR-587 FOR POB TH S0DEG18'50"W 10 FT TH
N89DEG 49'42"W 322.51 FT TO WEST LN OF TR 16 TH ALG SAID WEST
LN N0DEG14'8"E 10 FT TO SLY R/W LN OF CR-587 TH ALG SAID SLY
R/W LN S89DEG49'42"E 322.52 FT TO POB SUBJ TO PARKING ESMT PER
OR 3803 PG 1275 & SUBJ TO ESMTS PER OR 3803 PG 1268 & OR 4270
PG 1466 OR 9417 PG 3571

Legal Description

02-26-16-0300-00000-0010

Assessed in Section 02, Township 26 South, Range 16 East
of Pasco County, Florida

SHADY ACRES PB 5 PG 70 LOT 1 EXC NORTH 10 FT THEREOF & EXC
SOUTH 5 FT THEREOF OR 3374 PG 1397

Legal Description

02-26-16-0300-00000-0121

Assessed in Section 02, Township 26 South, Range 16 East
of Pasco County, Florida

SHADY ACS B 5 P 70 N 80 FT OF LOT 12 OR 7658 PG 299

Legal Description

02-26-16-0300-00000-0120

Assessed in Section 02, Township 26 South, Range 16 East
of Pasco County, Florida

SHADY ACRES PB 5 PG 70 SOUTH 100 FT OF LOT 12;SUBJECT TO R/W
EASEMENT ACROSS NORTH 14 FT THEREOF OR 7597 PG 1480