



New Port Richey

Meadows Dog Park

6674 Meadowbrook Lane



MEADOWS DOG PARK



PARKING LOT



PARK ENTRY



PARK ENTRY PATH



PLAYGROUND

SITE PHOTOS



RESTROOMS



BASKETBALL COURT



SMALL DOG PARK



PATH NORTH OF SMALL DOG PARK

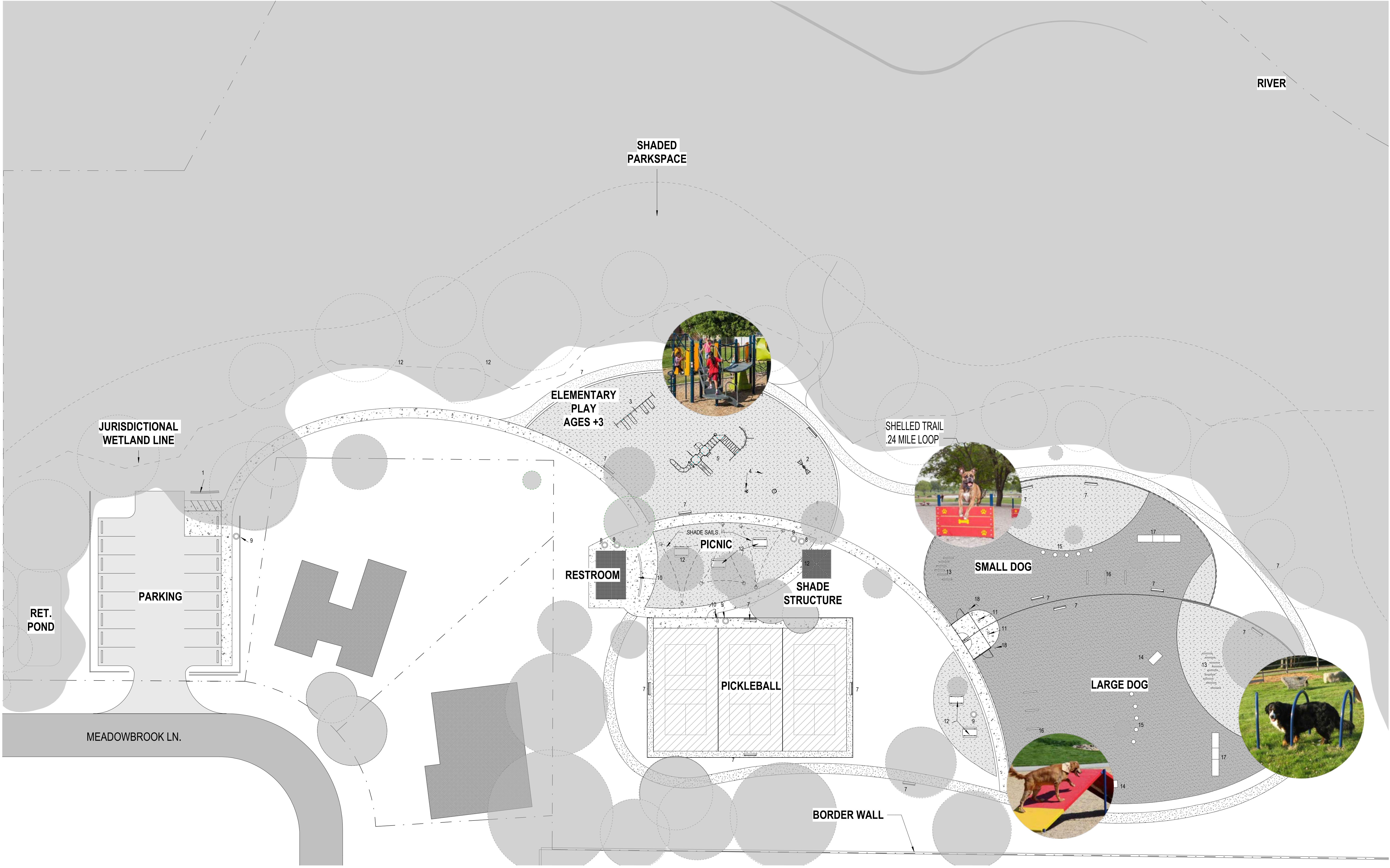
SITE PHOTOS



SHELTER



LARGE DOG PARK



1 ARCHITECTURAL SITE PLAN
3/64" = 1'-0"

KEYNOTES - SITE PLAN	
NUMBER	TEXT
1	PARK SIGNAGE
2	SEESAW
3	SWINGS
4	SPINNERS
5	PLAYGROUND
6	WOBBLERS
7	BENCH
8	RECYCLING CAN
9	TRASHCAN

KEYNOTES - SITE PLAN	
NUMBER	TEXT
10	HUMAN WATERFOUNTAIN
11	HUMAN/DOG WATERFOUNTAIN
12	PICNIC TABLE
13	HOOPS
14	TUBES
15	STEPPERS
16	HURDLES
17	A-FRAME
18	DOG WASTE STATION

SITEPLAN LEGEND

	SEEDED GRASS		CONCRETE		BAHAI SOD
	CRUSHED STONE		SHELL - OPTION 1		MULCH
	ASPHALT		SHELL - OPTION 2		PAINTED COURT

YEAR-ROUND SHELLED TRAIL

PHASE 1

PRELIMINARY NOT FOR CONSTRUCTION

THE ARCHITECTS AND ENGINEERS HEREBY DISCLAIM ANY LIABILITY FOR THE ACCURACY OF THE INFORMATION PROVIDED IN THESE PLANS. THE ARCHITECTS AND ENGINEERS SHALL NOT BE RESPONSIBLE FOR ANY ERRORS OR OMISSIONS IN THESE PLANS WITHOUT FIRST OBTAINING THE ARCHITECTS AND ENGINEERS' WRITTEN CONSENT. THE ARCHITECTS AND ENGINEERS SHALL NOT BE RESPONSIBLE FOR ANY CONSTRUCTION DEFECTS OR OMISSIONS WHICH MAY OCCUR AS A RESULT OF THE ARCHITECTS AND ENGINEERS' NEGLIGENCE OR THE NEGLIGENCE OF ANY OTHER PARTY. THE ARCHITECTS AND ENGINEERS SHALL NOT BE RESPONSIBLE FOR ANY DELAYS OR INTERUPTIONS IN THE CONSTRUCTION OF THE PROJECT WHICH MAY OCCUR AS A RESULT OF ANY CAUSE OTHER THAN THE NEGLIGENCE OF THE ARCHITECTS AND ENGINEERS. THE ARCHITECTS AND ENGINEERS SHALL NOT BE RESPONSIBLE FOR ANY INDEMNIFICATION OR DAMAGES OF ANY KIND WHICH MAY BE ASSERTED AGAINST OR INCURRED BY ANY PARTY IN CONNECTION WITH THE PROJECT.

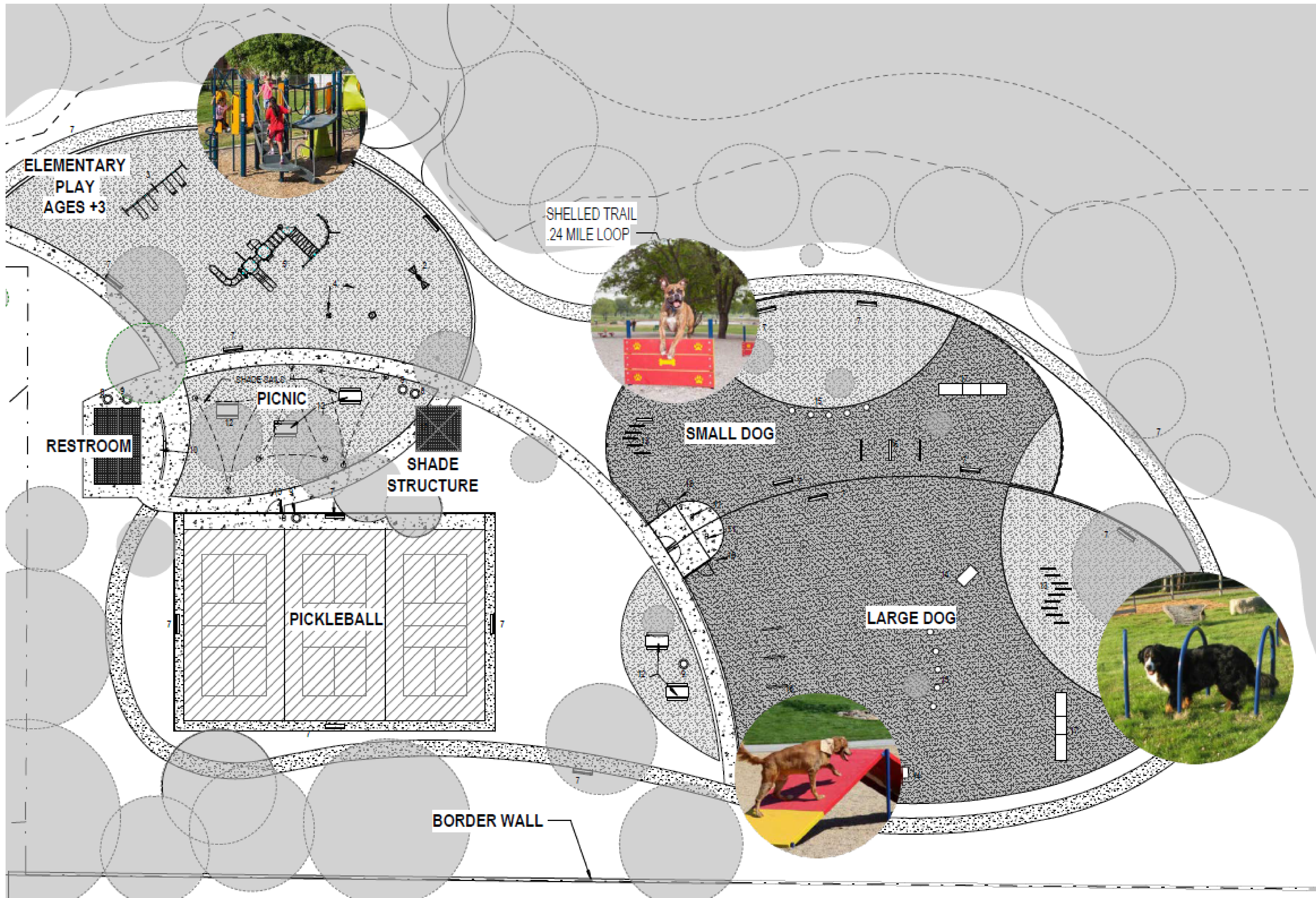
Project number
2019

DISTRIBUTION

MILESTONE	DATE
SITE PLANS	09/16/21

LEVEL 0 - SITE PLAN
PHASE 1

A-001



1 ARCHITECTURAL SITE PLAN
3/64" = 1'-0"

KEYNOTES - SITE PLAN	
NUMBER	TEXT
1	PARK SIGNAGE
2	SEESAW
3	SWINGS
4	SPINNERS
5	PLAYGROUND
6	WOBBLERS
7	BENCH
8	RECYCLING CAN
9	TRASHCAN

KEYNOTES - SITE PLAN	
NUMBER	TEXT
10	HUMAN WATERFOUNTAIN
11	HUMAN/DOG WATERFOUNTAIN
12	PICNIC TABLE
13	HOOPS
14	TUBES
15	STEPPERS
16	HURDLES
17	A-FRAME
18	DOG WASTE STATION

SITEPLAN LEGEND

	SEEDED GRASS		CONCRETE		BAHAI SOD
	CRUSHED STONE		SHELL - OPTION 1		MULCH
	ASPHALT		SHELL - OPTION 2		PAINTED COURT

YEAR-ROUND SHELLED TRAIL

PHASE 1

PRELIMINARY NOT FOR CONSTRUCTION

Meadows Park

CITY OF NEW PORT RICHEY
PHASE 1

Project number
2019

DISTRIBUTION

MILESTONE	DATE
SITE PLANS	09/16/21

LEVEL 0 - SITE PLAN
PHASE 1

A-001

THE INFORMATION CONTAINED HEREIN IS PRELIMINARY AND IS NOT TO BE USED FOR CONSTRUCTION. THE ARCHITECT MAKES NO WARRANTY OR REPRESENTATION, EXPRESSED OR IMPLIED, AS TO THE ACCURACY, COMPLETENESS, OR QUALITY OF THE INFORMATION CONTAINED HEREIN. THE ARCHITECT SHALL NOT BE RESPONSIBLE FOR ANY ERRORS OR OMISSIONS IN THIS DOCUMENT OR FOR ANY CONSEQUENCES ARISING FROM THE USE OF THIS DOCUMENT. THE ARCHITECT'S LIABILITY IS LIMITED TO THE PROFESSIONAL SERVICES PROVIDED BY THE ARCHITECT. THE ARCHITECT'S LIABILITY IS LIMITED TO THE PROFESSIONAL SERVICES PROVIDED BY THE ARCHITECT. THE ARCHITECT'S LIABILITY IS LIMITED TO THE PROFESSIONAL SERVICES PROVIDED BY THE ARCHITECT.

Wannemacher Jensen Architects, Inc.
132 Mirror Lake Drive N, Unit 301
St. Petersburg, Florida 33701-3214
(727) 822-5566 fax (727) 822-5475
www.wjarc.com
AA0002277
©Wannemacher Jensen Architects, Inc.