



STATEMENT OF QUALIFICATIONS

Site Development

Prepared For
The City of New Port Richey

Hire *Smart*®

AVRES
ASSOCIATES



Ayres Associates is a multi-specialty architectural/engineering consulting firm providing services from a network of 13 offices in five states: Wisconsin, Arizona, Colorado, Florida, and Wyoming.

Ayres Associates was incorporated in 1959. Our corporate headquarters is in Eau Claire, Wisconsin.

We are ranked 310th among the top 500 architectural/engineering firms in the nation by ENR magazine. We have been listed among the nation's top firms for more than 20 consecutive years.

We have the available resources, capital, equipment, and expertise of a national firm with the quick response and service mentality that you would expect of a small engineering firm.

Our superb project managers build long-term relationships with clients while reliably solving their problems, stretching their dollars, and masterfully navigating regulations.

EXPERTISE

- Site Engineering
- Landscape Architecture
- Master Planning/Site Design
- General Civil Engineering
- Transportation Engineering
- Traffic Engineering
- Structural Design
- Structural Inspection
- Water Resources Engineering
- Environmental Engineering
- Aerial Mapping/Land Survey
- Construction Observation
- Architecture
- Subsurface Utility Engineering (SUE)
- Utility Engineering and Coordination



WEST REGION

Phoenix, AZ
602.275.2655

Fort Collins, CO
970.223.5556

Cheyenne, WY
307.634.9888

MIDWEST REGION

Waukesha, WI
262.523.4488

Eau Claire, WI
715.834.3161

Green Bay, WI
920.498.1200

Madison, WI (Badger Road)
608.255.0800

Madison, WI (Terrace Drive)
608.443.1200

River Falls, WI
715.426.4908

SOUTHEAST REGION

Jacksonville, FL
904.260.6288

Tampa, FL (Benjamin Center)
813.290.8899

Tampa, FL (Hidden River)
813.978.8688

Titusville, FL
321.747.0066



Civil engineering is an integral part of facility design. As site engineers, we at Ayres Associates work with architects to meet overall design goals. From start to finish, we provide the engineering services needed to create a functional yet attractive site, whether it's a single lot or a multi-building development.

We offer:

- Staff experienced in working with other design professionals
- Innovative and cost-effective design
- Commitment to listening to our clients and responding to their needs
- Detailed quality assurance/quality control standards
- Extensive and long-term business relationships with municipalities and permitting authorities

“There were definitely differences of opinion. But thanks to calm, professional discussion and clear presentations of options by Ayres, we were able to make good decisions.”

– Bill Porter, Director of Public Works, City of Wauwatosa

EXPERTISE

- Site roadway and parking lot design
- Site utility plans
- Stormwater management and erosion control plans
- Site grading plans
- Site detention/water quality basin design
- Surveying and construction staking
- Assistance with federal, state, and local permit applications
- Construction administration
- Site planning
- Landscape design
- Site lighting design

AWARDS

Madison College Truax Campus Expansion

Honor Award, Built Design Category

American Society of Landscape Architects, Wisconsin Chapter

Harrington Beach State Park Improvements

Engineering Excellence State Finalist Award

American Council of Engineering Companies of Wisconsin



Whether you have natural resources and want to make the most of them, or you have an area that is undergoing redevelopment, a well-designed landscaped space can transform your community or campus from dull to destination. We'll help you create a vibrant and engaging space that draws in new visitors and enhances the quality of life for your everyday users.

From grant writing to full master plans, our landscape architects and engineers focus on creating a unique identity for your site, helping you preserve and enhance your resources to achieve an environment that is economically sustainable, aesthetically pleasing, socially dynamic, and ecologically sound.

“They were very effective at getting each group’s ideas to come together as one. In the end, they provided the community with a splashpad they are very excited about that incorporates heritage, surroundings, and functionality.”

— Paul Woodard,
City of Janesville Public Works Director

EXPERTISE

- Comprehensive parks and open space plans
- Park master plans
- Athletic/recreation facility planning and design
- Splash pad design
- Adventure play
- Recreation trail corridor design
- Grant services
- Venue facility design
- Ecosystem services
- Civil engineering

AWARDS

North Lakeland Discovery Center, Manitowish Waters, WI

Award of Honor

Wisconsin Chapter of the American Society of Landscape Architects

Orfan Park, Sun Prairie, WI

Award of Excellence

Wisconsin Park and Recreation Association

North Barstow and Phoenix Park Redevelopment, Eau Claire, WI

General Design Award of Excellence

Wisconsin Chapter of the American Society of Landscape Architects



Breathing new life into your community is extremely rewarding - and can seem extremely daunting. The planning experts at Ayres are here for you. We've been through it all, and will help you capture opportunities and transform your vision into reality.

From finding that initial funding to the final construction plans, we'll be at your side every step of the way. While we'll help you create a big-picture master plan, we don't forget the small details, either. Our planning and design services can include public participation and consensus-building, traffic impact and parking studies, and wayfinding signage.

EXPERTISE

- Grant & loan assistance
- Bicycle/pedestrian facilities
- Civil engineering
- Ecosystem services
- Landscape architecture
- Urban design
- Streetscape design
- Traffic engineering
- Stormwater management
- Sustainable site design
- Campus planning and design
- GIS mapping

AWARDS

Schweibert Riverfront Park

Award of Excellence, Wisconsin Chapter of American Society of Landscape Architects

Janesville Rock Renaissance Area Redevelopment

Merit Award for Analysis and Planning, Wisconsin Chapter of American Society of Landscape Architects

Milwaukee Westlawn Gardens Neighborhood Development

Honor Award for General Design, Wisconsin Chapter of American Society of Landscape Architects

“They were able to successfully communicate with the students and get them excited about the project. Like all projects, there were budget restraints, and [Ayres] ... helped us meet those by providing effective solutions.”
— Jerry Schuetz,
former City Administrator, City of Milton



Some of the most important keys to keeping your community running smoothly are all but invisible underground: water, sanitary sewer, and storm sewer. Residents take them for granted, but when something's wrong or they need an upgrade, Ayres Associates is there to get them back in order – while controlling costs and keeping you informed on changing regulations.

Have a business, health care or educational campus, industrial site, or community park you're responsible for? We deliver innovative and award-winning development services for all of these facilities. We'll even help you find ways to fund your project. From the start of a plan to its finish, Ayres is there for you, helping you sidestep regulatory problems or construction difficulties.

“I've worked with Ayres now for about 27 years. I have always received good work from Ayres. It has always been a joy to work with them. I have a great deal of confidence that when they do a job that it's going to be done right.”

– Terry Classen, former Director of Facilities Management, University of Wisconsin-Eau Claire

EXPERTISE

- Water supply, treatment, and distribution
- Wastewater collection and treatment systems
- Wastewater collection system monitoring
- Stormwater management
- Land and site development
- Streets, utilities, and lighting
- Grant and loan assistance
- Landscape architecture
- Urban and park planning/design
- Business, health care, educational, and industrial campuses
- Mining sites, wind farms, and energy corridors

AWARDS

Waukesha CTH “L,” CTH “Y” (Racine Ave) to CTH “O” (Moorland Road)

*Public Works Project of the Year Award
American Public Works Association, Wisconsin Chapter*

Collins Road Improvements (Rampart Road to Blanding Boulevard)

*Project of the Year Award
American Public Works Association, Northeast Florida Chapter*

Canal Importation and Ponds Outfall Design

Colorado Association of Floodplain Managers, Grand Award for Engineering Excellence



You already know that transportation systems need continual improvement, monitoring, and maintenance. Increased traffic, new businesses, and growing developments are stretching your roadway capacities while tight budgets require creative financing.

Hand off that stress to Ayres Associates. We'll listen first – to your goals, your concerns, and your ideas – and then we'll handle everything. From the early stages of permitting and consensus-building, to the final stages of design and construction, our highly experienced project managers and staff have the expertise and regulatory knowledge to keep your project running smoothly. On time. On budget.

“They do stormwater. They do roads. They do bridges. I mean, they're able to tackle all phases of a project and to coordinate those with the different outside government agencies such as the DNR and the Army Corps of Engineers. There's a lot of things that have to be correlated to get a project completed and done on time.”

– John Rogers,
Forest County Highway Commissioner

EXPERTISE

- Freeway planning & design
- Interchange design
- Urban roadway planning & design
- Rural roadway planning & design
- Bridge & retaining wall design
- Environmental assessments
- Environmental impact statements
- Right-of-way plats
- Property descriptions
- Public involvement
- Construction staging concepts
- Construction observation
- Signing & pavement marking
- Agency & utility coordination
- Lighting design
- Intersection design
- Roundabout design
- Sidewalk design
- Shared-use path design
- Safety improvements

AWARDS

Ozaukee County STH 33 (IH 43 to Tower Drive)

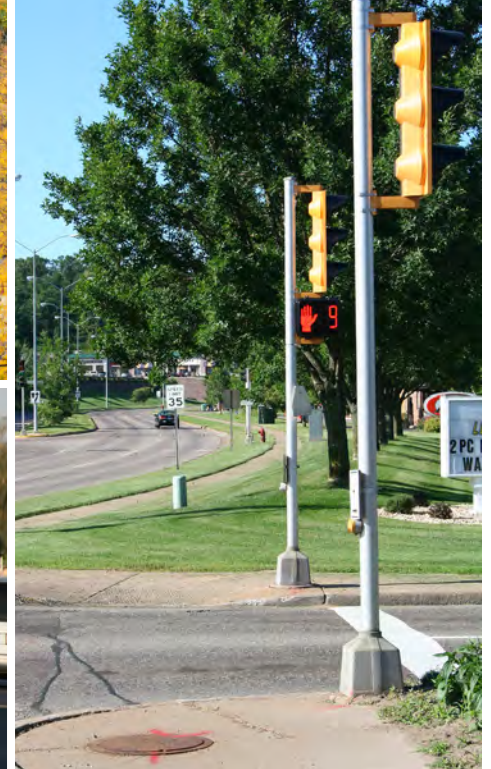
Engineering Excellence State Finalist Award
American Council of Engineering Companies of Wisconsin

USH 51/STH 29 Corridor Improvements

Engineering Excellence Best of State Award
American Council of Engineering Companies of Wisconsin

City of Jacksonville Collins Road Widening/I-295 Interchange

Project of the Year
American Public Works Association - Florida



Your community is growing with new residential and commercial developments and the streets needed to connect them - or perhaps you need to improve your existing system. Plan ahead with traffic engineering services that make these developments and streets safe and effective. Whether you need traffic studies to let you know how to improve street safety and flow, a traffic signal design that keeps traffic moving smoothly, or traffic-calming tools to reduce noise and speeding, the Ayres Associates' traffic engineers have the experience and ability to think outside the box to make your streets safer and more efficient, adding value to your community.

Vehicle traffic isn't the only consideration for your community's street network. We also provide context-sensitive solutions known as "complete streets" that enhance safe travel for all users – pedestrians, bicyclists, transit, people with disabilities, as well as vehicles. As your community grows, we can also provide parking studies and design, roundabout analysis and design, and traffic-taming options in the vicinity of your schools, parks, and downtown business districts. We can also help you promote alternative modes of transportation, like transportation demand management studies, bike path design and studies, as well as pedestrian studies.

EXPERTISE

- Development traffic studies
- Neighborhood traffic taming
- Traffic demand management studies
- Bicycle and pedestrian studies
- Parking studies
- Traffic safety analyses and audits
- School traffic and pedestrian safety studies
- Complete streets
- Streetscape enhancements
- Traffic modeling, including micro-simulations and 3D modeling
- Traffic signal operations and design
- Roundabout planning, analysis, and design

AWARDS

Madison Congestion Management Plan

Engineering Excellence State Finalist Award

American Council of Engineering Companies of Wisconsin



You want your community's bridges to stand the test of time and nature. Ayres Associates designs them so they do – cost-effectively and with an eye toward aesthetic appeal and ease of future maintenance. Contractors have commented that they bid plans from Ayres “tighter” because they are error-free, easy to read, and use desirable construction details – which means you can trust us to stick to your budget and your schedule whether your project is a simple box culvert or a massive interstate interchange.

Our nationally recognized hydrologic and hydraulic analysis staff provide additional insight and peace of mind on bridges we design that cross water. These specialized staff members also bring extensive experience to your dams: they have completed reconstruction on more than 40 publicly owned dams and more than 20 hydroelectric dams.

“Ayres Associates played a key role in determining what type of bridge is really going to work and where the bridges would go. They provided the expertise to make a good recommendation.”

– Tim Paulus,
St. Paul District of US Army Corps of Engineers

EXPERTISE

- Highway bridges and culverts
- Pedestrian/bicycle bridges
- Retaining walls
- Dams and hydraulic structures

AWARDS

SR 60 (Courtney Campbell Causeway)

*Engineering Excellence Awards – Grand Award
Florida Institute of Consulting Engineers*

City of Amery Bridge Street over Apple River

*Excellence in Highway Design Structure Design Nominee
Wisconsin Department of Transportation*

Cross Seminole Trail Red Bug Lake/SR 426 Pedestrian Overpass and Trail Design-Build

*Engineering Excellence Honor Award
Florida Institute of Consulting Engineers*

US 17-92 General Hutchinson Pedestrian Bridge

*Best of the Best National Award
Engineering News-Record Magazine*



Communities count on safe bridges, dams, and other civil structures – and you can count on Ayres Associates to detect problems, provide solutions, and trust us when we give the all-clear. Our highly trained team has inspected thousands of structures from coast to coast. This means that no matter what kind of inspection your structure needs, we've seen thousands just like it and will get the job done efficiently and in a cost-effective manner.

Our team includes commercially certified divers, trained climbers, welding experts, certified bridge inspectors, and professional engineers. They meet the National Bridge Inspection Standards and have taken all required courses from the Federal Highway Administration (FHWA) National Highway Institute. They have also assisted the FHWA National Highway Institute develop and teach training and safety courses.

We comply with all OSHA standards, including personal protective equipment and visibility while working in or near traffic and confined space entry. Our diving operation follows OSHA standards for commercial diving and our climbing operations use personal fall arrest systems meeting OSHA and the Society of Professional Rope Access Technicians standards.

EXPERTISE

- Routine inspection
- Underwater inspection
- Fracture Critical Member inspection
- Scour inspection
- Specialty access
- Steel fabrication quality assurance inspection
- Emergency response inspection
- Non-destructive testing evaluation

STRUCTURES

- Bridges
- Culverts
- Overhead signs
- High mast light poles
- Dams and water control structures
- Waterfront structures
- Parking facilities

“Ayres’ services for this task were invaluable. They provided a solution that was simple and cost-effective and worked with people in the field to implement the solutions. They were very flexible in working with a changing schedule.”

– Phillip Sauser,
US Army Corps of Engineers



Whether you're facing too much of it or not enough, water is becoming an increasingly urgent concern for communities throughout the country. From state-of-the-art hydraulic modeling that can reduce the impact of floods and hurricanes to the emergency support when these floods and hurricanes hit, the nationally recognized specialists at Ayres Associates can make the difference between a terrible disaster and a pat on the back for preparedness.

Our multi-disciplinary staff includes experts on dams and bridges, as well as restoration of natural water flows, so your water stays where you want it to stay. Our staff literally wrote the book when it comes to drainage design, so you'll avoid being snarled in red tape. Federal clients such as the U.S. Army Corps of Engineers sign us for open-end hydrology and hydraulic contracts, and staff members are frequently called upon by the National Highway Institute to teach hydraulics courses across the country.

Ayres was able to pick up our projects and complete them when two other firms failed to do so. ... [Their] project managers made our project a priority to complete, especially with its complications.

— Joshua Petersen, Senior Water Resources Engineer,
Dakota County, MN

Hire *Smart*[®]

EXPERTISE

- Dams and flood control
- River engineering and river training works
- Stream restoration
- Bridge hydraulics and scour evaluations
- Watershed and water quality management
- 1-D and 2-D hydraulic modeling
- Hydrologic modeling
- Floodplain mapping
- FERC permitting and inspection
- Hydraulic structures
- Lake management planning and rehabilitation
- Tidal/coastal hydraulic analysis
- Bulkhead design
- Wetland delineation, design, and permitting
- Flood protection

AWARDS

Town of Oconomowoc Monterey Dam

Local Program Outstanding Highway Construction Award for Excellence in Small Structures, Wisconsin Department of Transportation

Lykins Gulch Drainageway Channel and Creek Outfall

Engineering Excellence Honor Award, American Council of Engineering Companies of Colorado



Nearly every community has it: property that simply doesn't do your city justice. Whether it's a blighted neighborhood, a contaminated industrial site, or a landfill that has become a burden, Ayres Associates can help you turn these problem areas into attractive, profitable sites that contribute to your tax rolls and your community's reputation.

Navigating the maze of regulatory agencies and finding funding for your project is daunting, but with Ayres at your side, red tape falls to the wayside and funding options you didn't even know existed become available. We have helped our clients acquire more than \$140 million in grants and loans, and that number is always climbing.

Our decades of experience with brownfields, landfills, and environmental assessments have given us insight into a variety of cost-effective, innovative solutions that work in the real world, not just on paper. Keeping communities like yours safe, healthy, and productive is our top priority.

EXPERTISE

- Brownfield redevelopment
- Phase 1 & 2 environmental site assessments
- Environmental impact assessments and statements
- Soil and groundwater remediation and monitoring
- Landfills – sanitary, construction and demolition
- Grant writing and reimbursement requests
- Groundwater hydrology and modeling
- Spill prevention control and countermeasure plans
- Asbestos, mold, and lead paint assessments
- Environmental permitting

AWARDS

Former Getzen Company Remediation

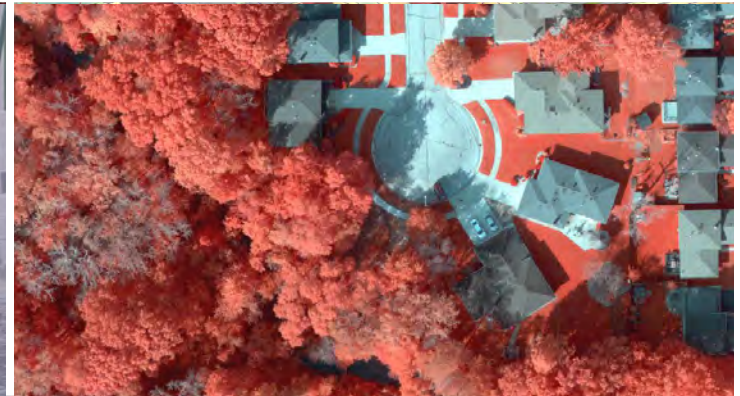
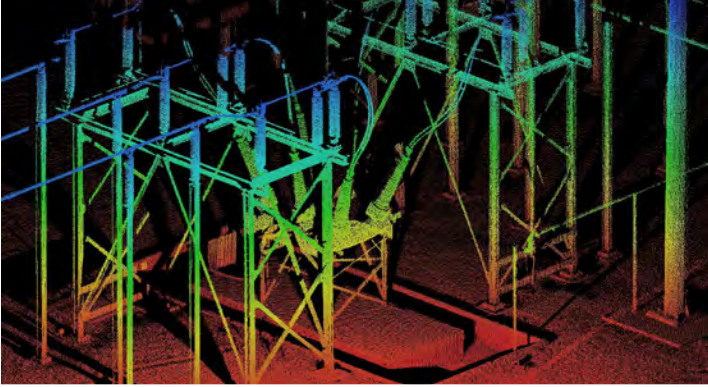
*Engineering Excellence Awards Best of State Award
American Council of Engineering Companies of Wisconsin*

Icke Landfill/Novation Technology Campus Brownfield Redevelopment

*Brownfield Renewal Award - Economic Impact Category
Brownfield Renewal Magazine*

Village of Waunakee Former Stokely Canning Facility Redevelopment

*Community Sustainability Award
International City/County Management Association*



Aerial mapping services are important facets of your engineering, emergency response, and land use planning initiatives. Ayres Associates is a nationally recognized leader in aerial and ground-based survey solutions, offering a smart blend of traditional and contemporary technologies to support a wide range of public and private services.

Our broad experience with land surveying, LiDAR, aerial imagery, and GIS enables a turnkey and efficient approach to each project. We also recognize that a successful project will bring you into the design process to customize the solution to better suit your budget, schedule, and situational conditions - whether that's a jurisdiction, corridor, or project site.

SPECIALIZED APPLICATIONS FOR:

- Land information
- Transportation design
- Floodplain and stormwater studies
- Municipal engineering
- Forestry and agriculture
- Utility mapping
- Expert testimony

EXPERTISE

- Aerial imagery
- Photogrammetry
- Aerial LiDAR
- Mobile LiDAR
- HD laser scanning
- GIS consulting
- Boundary survey
- Construction staking
- Hydrographic survey
- Right-of-way plats
- Ground control
- Geodetic control

AWARDS

Wisconsin Regional Orthophotography Consortium

Best of State Engineering Excellence Award

American Council of Engineering Companies of Wisconsin

“They’re doing it the right way. They provide good client contact, good detail and follow-through, and good analysis of solutions. They solve problems.”

— Richard Wilberg, Development Director,
The American Center



Construction can be chaotic. With so many moving pieces in the process – construction crews, property owners, administrative red tape – all it takes is one of those pieces not working properly to create major problems on the site and major headaches for you. Ayres Associates can help you tame the chaos and lose the hassle. Our construction observation experts have a wealth of knowledge that we share and tap into internally – we’ve seen it all and are adept at recognizing problems before they arise so that we can have creative, workable solutions ready.

We understand that for your project to run smoothly, communication is critical: communication with you, with the public, with contractors, and with utility companies and other agencies.

Whether your project involves observation on a multi-million dollar highway project, a local street reconstruction, or a dam repair, rest assured that your schedule and budget are our top priority. We resolve issues quickly and decisively based on years of field smarts so that your project can continue forward seamlessly.

EXPERTISE

- Transportation construction observation
- Municipal construction observation
- Hydraulic structure construction observation
- Construction staking
- Construction inspection
- Materials testing
- Traffic control
- Buildings

“**[The Ayres Associates team] has always done a great job of keeping me involved. They definitely do a good job at representing both the City and WisDOT’s interests.**”

– Chris Petykowski, Principal Engineer,
City of Madison



Tell us what's on your mind. A bright, attractive office or educational space that creates a pleasant environment for employees or students, with the flexibility to grow and change? An inviting senior living center or health care facility? A unique community center to improve your town or city's quality of life? Ayres Associates' architects will make it happen for you. First, we listen – to you, and to the stakeholders. Then we'll create a design that incorporates your ideas, meet your needs, and solves your problems. We fuse creativity with decades of experience designing everything from stately government buildings to state-of-the-art commercial centers, so you'll get the benefits of both originality and practicality.

Our goal is to design sustainable buildings that are constructed more efficiently and cost less to run once they're up. Our LEED-accredited architects understand how to create sustainable buildings that are healthier and more comfortable for their users. Your design makes a statement about you and your community. We're here to help you make that statement.

EXPERTISE

- Health care
- Senior living (independent, assisted, memory care, skilled nursing)
- Courthouses, jails, and libraries
- Industrial/manufacturing
- K-12 education facilities
- Higher education facilities
- Offices
- Commercial/retail buildings
- Churches

SERVICES

- Interior design
- Feasibility and space needs studies
- Landscape architecture

“They paid special attention to building maintainability, speaking frequently with UWRF maintenance personnel regarding access to equipment. UWRF's wishes were always taken into consideration while selecting and specifying mechanical equipment and building finishes.”

– Dale Braun, Campus Planner,
University of Wisconsin-River Falls

Chris Martin, PE
Project Manager



Total Experience

19 Years

Registrations

*Registered Professional Engineer,
FL, 2007*

Certifications

Certified Building Contractor

*Certified Underground Utility
Contractor*

Paving Level 1 Certification

*Florida DOT Maintenance of Traffic
– Advanced*

Education

*BS, Civil Engineering, University of
Florida, 2003*

Chris has been the project manager for all of our recent projects Civil and utility engineering projects. As a civil engineer, Chris takes a lead role in project management and design for municipal and site civil design projects; preparing earthwork computations; preparing plans, specifications, and bidding documents; performing construction administration; and working directly with clients and regulatory agencies.

Chris has experience in environmental, utility, and water and wastewater operations. His utility expertise includes water, wastewater, and reclaimed pipelines. He also has worked on telecommunications, gas, power, and fiber facility relocations. This includes providing detailed conflict analysis, relocation design, and formulating utility work schedules. Chris also has transportation construction experience.

Related Project Experience

- Project Manager, USF St. Petersburg, Utility Master Plan
- Project Manager, USF St. Petersburg, 7th Avenue Vacating
- Civil Engineer, USF St. Petersburg, Sailing Center Expansion
- Civil Engineer, USF Tampa, Holly Drive and 50th Street Intersection Improvements
- Project Engineer, USF Tampa, Diesel Storage Project
- Project Engineer, USF Tampa Southeast Cooling Tower Design
- First Presbyterian Church of St. Petersburg Drainage Investigation
- Project Manager, Capri Isle Water Main Replacement, Pinellas County
- Project Manager, Countryway Boulevard Force Main Replacement, Hillsborough County
- Project Engineer, City of Tampa, “The Links” SR 60 and Memorial Highway Water Main Relocation
- Project Manager, Ulmerton Road Sewer and Water, 119th Street to Long Branch Canal, Pinellas County
- Project Manager, Subsurface Utility Engineering Cherrywood Avenue Water Main, Hillsborough County
- Project Manager, Lovers Key Sanitary Sewer Improvement
- Project Manager, Bryan Road/Brooker Road Intersection Southwest Improvements Construction Phase Services, Hillsborough County
- Project Manager, HART Owners Representative, Ybor Building Renovations
- Project Manager, HART Owners Representative, Development of Design-Build RFP Design Criteria Packages for HMS Building Renovations
- Project Manager, City of Largo, Utility Relocation for SR 55 (US 19)
- Project Manager, FDEP Juniper Springs Civil Site Design
- Project Manager, Manatee County Government, Tidevue Estates Sewer and Water Line Rehabilitation
- Project Engineer, Tricon International, Inc., Packingham and Buttermilk Sloughs, Kissimmee

Janice Sands Ash, PE
Principal-in-Charge / QA/QC



Total Experience

35 Years

Registrations

*Registered Professional Engineer,
FL, 1990*

Florida General Contractor

Education

*MS, Civil/Environmental
Engineering, University of South
Florida, 1990*

*BS, Engineering Science, University
of South Florida, 1987*

Memberships

*American Society of Civil Engineers,
Utilities Subcommittee, Chairman*

*Florida Utilities Coordinating
Committee*

Transportation Research Board

*University of South Florida
Engineering Alumni Association*

Jan brings an impressive array of engineering experience to the table. Her expertise is built upon more than three decades of work in civil engineering for public and private sector infrastructure; subsurface utility engineering; utility infrastructure design, construction management, and inspection; and water resources, marine, ecological, and environmental engineering. Her municipal experience includes over 300 miles of water transmission and distribution lines, upgraded booster pumps, and modified water treatment facilities.

As founder of The Ash Group before it became part of Ayres Associates, Jan has been practicing a hands-on management approach in which her more than 35 years of engineering design, project management, and quality control experience benefits every project under her supervision. She makes sure Ayres Associates' resources are efficiently and effectively applied to projects to make project execution cost-effective, timely, and of consistent quality.

Related Project Experience

- Principal-in-Charge, USF St. Petersburg, Utility Master Plan
- Principal-in-Charge and Engineer of Record, USF St. Petersburg, Student Housing Phase 1 Design/Build
- Principal-in-Charge, USF St. Petersburg, Sailing Center Expansion
- Principal-in-Charge and Project Manager, USF St. Petersburg, Dock, Dolphin, and Seawall Design
- Principal-in-Charge, USF St. Petersburg, 4th Street and 5th Avenue South
- Principal-in-Charge, USF St. Petersburg, 7th Avenue Vacating
- Principal-in-Charge, USF St. Petersburg, Survey of Utilities and Above Ground Features, Western Half of Block of 2nd and 3rd Street and 5th to 6th Avenue South for Parking Garage
- Principal-in-Charge, USF St. Petersburg, FAA Clearance Evaluation for Gulf Coast Legal Services Building
- Principal-in-Charge, USF St. Petersburg, Vacuum Excavates for Chilled Waterline
- Principal-in-Charge, Project Manager, USF Tampa, Hot Waterline Installation Design-Build
- Principal-in-Charge, USF Tampa, New Marshall Center
- Principal-in-Charge, USF Tampa, Collins Garage Pedestrian/Traffic Improvements
- Principal-in-Charge, USF Tampa, Sessums Mall Expansion
- Principal-in-Charge, USF Tampa, Multipurpose Field Realignment and Bike Lane
- Principal-in-Charge, USF Tampa, Miscellaneous Projects
- Principal-in-Charge, USF Tampa, Campus Burger King
- Project Manager, USF Tampa, Southeast Chiller Yard and Site Piping Design Development at
- Project Manager, USF Tampa, Marshall Student Center Enhanced South Plaza
- Principal-in-Charge, USF Tampa, Fine Arts and Science Sidewalk Drainage



OTHER KEY STAFF

Michael Payant, PE, Civil Engineer

Registration: Registered Professional Engineer, WI

Certifications: Pipeline Assessment and Certification Program, National Association of Sewer Service Companies

Education: MBA, Marquette University; BS, Civil Engineering, Marquette University

Years of Experience: 30

Michael joined Ayres Associates in 2016 and manages engineering services provided out of the Waukesha office. He has extensive experience in civil engineering for local governments and residential and commercial development and is responsible for developing and maintaining relationships with southeast Wisconsin clients. Among the expertise Michael offers our valued clients are utility and roadway design and analysis, site development, capital planning, and infrastructure management. Michael is active in many area organizations and supports Ayres Associates' expanded involvement in those professional and community groups.



Disa Wahlstrand, PE, LEED AP, Vice President

Registration: Registered Professional Engineer, WI

Certifications: Leadership in Energy and Environmental Design Accredited Professional

Education: MS, Civil and Environmental Engineering, University of Iowa; BA, Physics, Gustavus Adolphus College

Years of Experience: 22

Disa oversees Ayres Associates' municipal services, water resources, and landscape architecture operations in Wisconsin. Since joining Ayres in 1995, she has earned the respect of clients and staff through her excellent communication skills and insightful leadership. She managed the Eau Claire municipal services group from 2005 until becoming vice president of engineering services in 2015. In addition to her administrative duties, Disa leads projects for municipal, institutional, and commercial clients, including health care projects, educational and commercial campus development projects, and community development and municipal public works projects.



Here is how Julia Johnson, a JAMF Software project specialist, described Disa's work on the site for the new JAMF office building in Eau Claire: "Disa was very clear in her responses in an otherwise very complicated process. She made it easier to work through all the regulations."



Troy Robillard, PE, Transportation Engineer

Registration: Registered Professional Engineer, WI, MI, GA

Education: BS, Civil Engineering, University of Wisconsin-Madison

Years of Experience: 18

Troy joined Ayres Associates in 1999 with one year of experience as a civil engineer. He is the manager of transportation services in Ayres Associates' Waukesha and Green Bay offices, and he works as a project manager to complete transportation design projects. He has experience in highway and municipal projects, including rural and urban highway, bridge, street, and storm sewer facilities. His responsibilities include state and county highway design, urban street design, environmental documentation, and public involvement.



Here is how Dale Jandrain, former Kewaunee County highway commissioner, characterizes Troy's services: "Ayres has been a longtime consultant for Kewaunee County Highway. Troy Robillard understands the needs of our county and understands how I want things done without any extra work and costs for us to bear."



Curtis Hulterstrum, PE, Water Resources Engineer

Registration: Registered Professional Engineer, WI

Education: BS, Civil and Environmental Engineering, University of Wisconsin-Madison

Years of Experience: 38

Curt joined Ayres Associates in January 2016 as a senior project manager, bringing decades of experience in water resources engineering. His floodplain management planning, stormwater management planning and design, and floodplain and stormwater regulatory compliance experience benefit clients in southeastern Wisconsin and throughout the Midwest. Curt's background in the consulting industry and in the public sector includes drainage system design, bridge and culvert hydraulics, construction site erosion control, stormwater and floodplain regulatory compliance, and computer modeling. Curt's municipal experience ranges from street projects to stormwater management plans in the Milwaukee metro area, Sun Prairie, Sheboygan, Fond du Lac, Kenosha, and Wisconsin Rapids.



Scott Maier, PE, Civil Engineer

Registration: Registered Professional Engineer, WI, IL, MI, CO

Education: BS, Civil Engineering, Michigan State University

Years of Experience: 17

Scott joined Ayres Associates in 2016, bringing nationwide experience that includes developments in more than 25 states. Scott is experienced in design, permitting, construction management, asset management, entitlements, and real estate contracts. He brings a big-picture approach to projects in which he works skillfully with multidiscipline teams including clients, contractors, municipal officials, designers, and financial and legal stakeholders. Scott is known for thinking outside the box to find alternatives, best practices, and cost reductions, including through working with regulators to find acceptable solutions when municipal codes seem to present roadblocks to a project. Scott's project experience spans retail, commercial, industrial, multi-family residential, office, and municipal developments. His design expertise includes grading and drainage, paving, and wet utilities. He is proficient in AutoCAD Civil 3D, WinSLAMM, and HydroCAD.



Benjamin DeBaker, PE, Construction Engineer

Registration: Registered Professional Engineer, WI

Certifications: Certified Nuclear Density Technician (NUCDENSITYTEC 1), Portland Cement Concrete Technician 1 (PCCTEC 1), Transportation Materials Sampling (TMS)

Education: BS, Civil Engineering, University of Wisconsin-Milwaukee

Years of Experience: 14

Ben joined Ayres Associates in 2002, bringing cooperative education experience with WisDOT, where he performed construction inspection under the supervision of project managers for phases 1, 2, and 3 of the STH 31 project in Racine and Kenosha Counties from 2000 to 2001. His primary responsibility at Ayres Associates is construction administration as an assistant or project leader. He also assists project staff in developing highway and transportation plans. Ben has experience in preparing 404 permit documentation; preparing roadway geometric design in CAiCE; assisting at public information meetings; preparing quantities and estimates using Estimator and Transport; preparing transportation plans; and assisting technicians with preparing plans in MicroStation.



John Davis, PE, PTOE, Traffic Engineer

Registration: Registered Professional Engineer, WI, WY, GA, IN, FL, IL, MN, IA

Certifications: Professional Traffic Operations Engineer; Traffic Signal Operations Specialist; Wisconsin Department of Transportation Traffic Impact Analysis Certification

Education: MS, Civil Engineering, Purdue University; BS, Civil Engineering, Purdue University

Years of Experience: 33

John joined Ayres Associates in 2007, bringing 25 years of traffic engineering experience. He is manager of Ayres Associates' traffic engineering group. John's project experience includes corridor operations, intersection control evaluations, traffic signal and system design and operations, bicycle/pedestrian issues, geometric design, access management, and public involvement. John has demonstrated his commitment to moving the traffic engineering profession forward as a fellow of the Institute of Transportation Engineers (ITE) since 1998 and his through service to ITE in various elected and appointed capacities. He currently serves as chair of International ITE's Traffic Engineering Council.



Ken Voigt, PE, Traffic Engineer

Registration: Registered Professional Engineer, WI

Certifications: Certified Traffic Impact Analysis Preparer, WI

Education: MS, Transportation Engineering, University of Wisconsin-Milwaukee; BS, Civil Engineering, University of Wisconsin-Madison

Years of Experience: 50

Ken has 50 years of experience in conducting traffic safety studies, roadway operation analysis, traffic calming, and neighborhood street system design. He has led numerous focus group sessions to build consensus and to develop a context-sensitive design approach to projects. One of his most challenging projects was building consensus for improvements along the East Washington Avenue Corridor in Madison. Ken teaches a course on environmental impacts of transportation systems at the University of Wisconsin-Milwaukee; he has also taught a traffic control course at UW-Milwaukee and intersection design and traffic impacts of land development courses for the University of Wisconsin Engineering Extension. Ken's experience on large, complex corridor management projects ranging from capacity improvements to ITS applications, along with his common-sense approach to traffic management, provides insight into solving clients' traffic problems. His public involvement skills make a real difference in how projects are received.



Blake Theisen, PLA, Landscape Architect

Registration: Professional Landscape Architect, WI, MI, IA, CO, IL

Certifications: Council of Landscape Architectural Registration Boards; ISA Certified Arborist

Education: BA, Botany, Miami University of Oxford Ohio

Years of Experience: 16

Blake has been providing exceptional recreational facility site analysis, planning, design, and implementation since 1999. His start-to-finish involvement ensures that projects are delivered on time and as envisioned. Blake's project expertise includes comprehensive outdoor recreation plans, park master plans, athletic complexes, community water parks, skate parks, and playgrounds. With a background in botany and ecology, he promotes environmental stewardship throughout facility planning and design. He is a skilled public process facilitator and a trusted convener of community leaders.



Jacob Blue, PLA, Landscape Architect

Registration: Professional Landscape Architect, WI, PA, MO, WY

Education: MS, Landscape Architecture, University of Wisconsin-Madison; BLA, Landscape Architecture, Pennsylvania State University-State College, PA

Years of Experience: 16

Jacob has led and participated in ecologically based public and private design projects around the world. His work has focused on designing contemporary landscapes by maximizing ecosystem services for human health and well-being as well as site operation and function. As a landscape architect and ecologist Jacob has developed a practical understanding of how nature works and how the built environment can be modeled off of nature to maximize landscape functions. His work often centers on resolving nature-based, design aesthetic and ecosystem functional conflicts. He is a coauthor of the Sustainable Sites Initiative (SITES), as well as the Sustainable Sites Handbook.



Bruce Morrow, PLA, LEED AP, Landscape Architect

Registration: Professional Landscape Architect, WI

Certifications: Leadership in Energy and Environmental Design Accredited Professional

Education: MRP, Planning, Washington State University; BSLA, Landscape Architecture, Washington State University; BA, Economics, Kalamazoo College

Years of Experience: 21

Since 1995 Bruce has been providing planning, design, and implementation services. Working with public and private clients, his development projects range in size from individual site developments to large city center master plans. Bruce excels in all stages of project development from schematic design to construction documentation and sustainable design. Bruce also has an accomplished transportation resume. His expertise includes bicycle and pedestrian facility planning and design; wayfinding; streetscape and landscape design; public process facilitation; corridor studies; institutional and corporate campus design; urban design; and park and open space design.



Lynn Scherbert, PE, Environmental Engineer / Grant Writer

Registration: Registered Professional Engineer, WI

Education: MS, Civil/Environmental Engineering, University of Wisconsin-Milwaukee; MS, Production Technology, University of Wisconsin-Madison; BS, Natural Resources and Landscape Architecture, University of Wisconsin-Madison

Years of Experience: 28

Lynn joined Ayres Associates in 1995 with seven years of professional experience. Her responsibilities with Ayres Associates include grant application preparation, grant reporting and closeout administration, stormwater engineering, environmental site assessment, brownfield demolition and redevelopment, fieldwork coordination, and project management. Her grant expertise includes U.S. Environmental Protection Agency, Wisconsin Department of Natural Resources, and Wisconsin Department of Commerce grant programs. Lynn also has experience in wetland delineation and plant identification; soil nutrients and groundwater flow; pesticide use, applications, and regulations; landscape architecture; vegetative design; and development and implementation of product marketing programs.



Thomas Tym, Technology Solutions

Education: BS, Engineering and Computer Science, University of Wisconsin-Milwaukee

Years of Experience: 41

Thomas joined Ayres Associates in 2016 as technology solutions leader. He offers a comprehensive understanding of the role of technology in geospatial, asset management, and engineering solutions to help local governments and public and private utilities to increase productivity. He assists with the design, development, acceptance, and implementation of technology solutions for municipal and utility clients in the Midwest. His background in surveying, engineering design, infrastructure management, and utility construction provides a diverse knowledge base. Thomas offers clients his expertise in needs assessment, workflow analysis, process improvement, application development, and change management.



Mitch Reimer, PLS, Surveyor

Registration: Professional Land Surveyor, WI

Years of Experience: 15

Mitch has more than 15 years of surveying experience serving municipal, state, and private clients. He has gained extensive knowledge in all types of surveying, including boundary, CSM, ALTA, subdivision plats, horizontal, vertical, aerial control networks, GIS mapping, and complex urban stormwater surveys. Mitch serves as a survey crew chief and is responsible for providing all project deliverables to project managers and clients and scheduling all survey tasks.





THE AMERICAN CENTER, MADISON

American Family Mutual Insurance constructed its national headquarters on an 860-acre parcel located on Madison’s east side. American Family phased development of the property as a commercial and office park designed to attract high-profile businesses. Ayres Associates provided survey and design services for 14 additions since the park opened.

Civil: Ayres Associates provided design services including street grades for public and private streets, a storm sewer system for private streets and stormwater management, street lighting, and landscaping plans. Ayres Associates’ staff coordinated these designs with storm and sanitary sewer, street, and water system designs for public streets completed by the City of Madison’s engineering department. Streets totaled 15,500 linear feet.



Ayres Associates also developed specifications and bidding documents for street and utility construction, and developed contractor’s contracts.

Survey: Ayres Associates assisted the client in planning the plat layout and performed office and field services to create and record 16 plats and four certified survey maps. Because the office park location is adjacent to IH 90/94 and USH 151, issues involving TRANS 233 were part of the platting process. Exterior and interior corridors were platted for environmental and storm drainage uses.

Construction Observation: As each phase was developed, Ayres Associates provided full construction services including acting as liaison

to the contractor for the client, pre-construction administration and meetings, construction observation, processing of change orders and pay requests, and project closeout procedures.



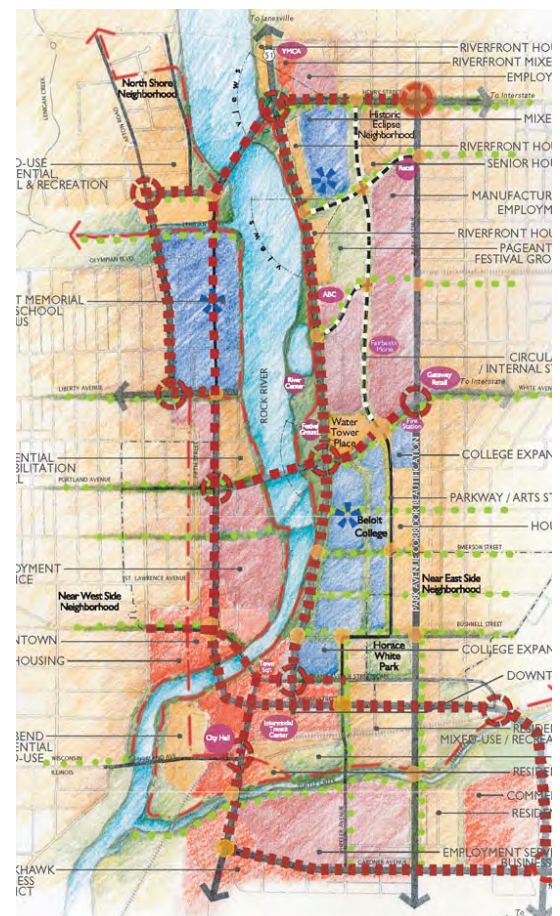
BELOIT COMMUNITY PLANNING, BELOIT

For more than two decades our team has been actively engaged with the City of Beloit and its private sector partner, Beloit 2020 Development Corporation, in the renaissance of Beloit's Rock River corridor. This partnership has opened the community's riverfront to public access and achieved an economic revitalization of the adjoining city center neighborhoods and downtown.

Projects have included a community festival site, an adventure playground, a bike path system, an upgraded boat launch, and canoe access. Redevelopment initiatives have included bridge replacements, streetscapes, adaptive reuse of former industrial buildings for new businesses, downtown storefront renovations, Beloit College expansion, and the renovation of the community's only high school on the river.

Employment, new businesses, and the number of residents have all grown. Funding for the riverfront redevelopment has included City, TIF, foundation, state, and federal dollars.

Among the awards the projects have won are the Award of Excellence from the Wisconsin Chapter of the American Society of Landscape Architects for the Turtle Island Playground, the Best Public Improvement Renovation Award from the Wisconsin Main Street Association, and the Project of Distinction Award in the public works category from the Wisconsin Chapter of Associated Builders and Contractors.





“Before the project started, there was inadequate street lighting and parking. Everything was looking a little shabby. I’m ecstatic with the results. We’ve got lighting, we’ve got sidewalks, we’ve got parking. It’s really unified the whole Original Village.”

– Steve Ehlers, owner of Larry’s Market

ORIGINAL VILLAGE, BROWN DEER

In the early 1900s the Original Village area was the center of activity in Brown Deer. Today the area supports a mixture of commercial and residential uses. By using streetscape techniques, the Village hopes to promote redevelopment of the area into a premier destination not only for Village residents but also for people in surrounding communities.

Starting in 2007, Village staff working with Ayres began discussing how to put a little more shine on the Original Village and bring it back to life. Preliminary concepts were laid out to maximize parking for business owners and walkability for area residents. Concepts included parallel and angle parking and the reintroduction of sidewalks to the area.



Another consideration during the concept phase was improving stormwater management. The Village is required to maintain a Wisconsin Pollution Discharge Elimination System (WPDES) permit by the Wisconsin Department of Natural Resources (WDNR). The Original Village project gave Brown Deer an opportunity to meet the requirements of the WPDES permit by including the design of two detention pond features within the project. These ponds were designed to meet the 40% total suspended solids (TSS) requirement for all MS4 operators by 2013. The two ponds were sized to stay within the boundaries of the space available as well as meet the 40% TSS reduction.

Once preliminary documents were completed, Ayres assisted the Village with retaining a landscape architect to integrate streetscape elements to the project. Colored crosswalks, planters, seating walls, benches and trash receptacles were added to the final designs. Monuments and new electronic sign boards were included.

Ayres provided preliminary and final roadway designs, topographic survey, platting, certified survey maps, construction plans and specifications, storm sewer design, and stormwater quality design. Sanitary sewer rehabilitation was completed via a separate project. Beginning in summer 2013 Ayres provided construction administration, observation and staking. The project was substantially complete in November 2013; final completion came in 2014. Total reconstruction costs were \$3 million.



RIVER PRAIRIE NORTHWEST QUADRANT, ALTOONA

The City of Altoona retained Ayres Associates to assist with planning and design for the River Prairie Northwest Quadrant development, including landscape architecture, site civil and roadway design, and traffic engineering. The initial project involved providing 30% design for the entire 80-acre property and full design and construction for approximately 30 acres ready for development in 2014.

Services also included public participation, plans and specifications, bidding documents and assistance, construction staging, utility coordination, resident inspection, and construction staking.

Pedestrian-oriented design was emphasized, and gateway signage, public space opportunities, and landscape options were considered early in the design phase.

Ayres was retained to design Phase 2 of the development for 2015 construction of all streets and roundabouts, except for Main Street. Lighting and utilities also were installed, including phone, electric, fiber optics, gas, and Wi-Fi. Stormwater drainage facilities, ponds, and a water feature were constructed, along with entrance features and irrigation. A boat launch, access road, pavilion, parking lots, landscaping, and temporary restrooms are being established along the Eau Claire River.

Four parking lots and six public spaces are being designed to the 75% level and will be constructed in 2016. The public areas include a headwater feature, a performance area, a four seasons plaza, a skating area, a splash pad, a Main Street plaza, and pavilions.





OAKWOOD BUSINESS PARK, EAU CLAIRE

Several clients, primarily Oakwood Business Park, LLC, retained Ayres Associates to provide services for the following projects comprising key components of the Oakwood Business Park in Eau Claire:

Keystone Crossing and Shoppes at Oakwood (Oakwood Business Park, LLC) – Topographic survey, design, bidding, and construction services for construction of a new road and utilities (Keystone Crossing) and for a site for Shoppes at Oakwood, including utilities and parking. Also provided traffic signal design at intersection.

Oakwood Business Park – Bullis Farm Road (Oakwood Business Park, LLC) – Extended the street and utilities from the intersection of Keystone Crossing and Commonwealth. Provided street and utility design, city and state submittals, and construction phase support.

Holiday Inn Site Plan (Royal Construction, Inc.) – Design-build project. Provided site design, topographic survey, grading plan, storm sewer system, sanitary sewer and water services, traffic and parking analysis, and regulatory submittals for four-story Holiday Inn on 3-acre site in business park.

Outback Steakhouse Site Design (Outback Steakhouse, Inc.) – Site design, topographic and ALTA survey, regulatory submittals, specifications, and a landscape plan, as well as surrounding street and utility design work.

Texas Roadhouse Site Development (Greenberg Farrow Architecture) – Site design and construction support services, including ALTA survey and assistance with the City submittal process.

Globe University Site Design (Winkelman Building Corp.) – Site/civil design and assistance with City approval for the new Globe University site, along with limited construction phase assistance, a trip generation report, and survey.





MEQUON BUSINESS PARK, MEQUON

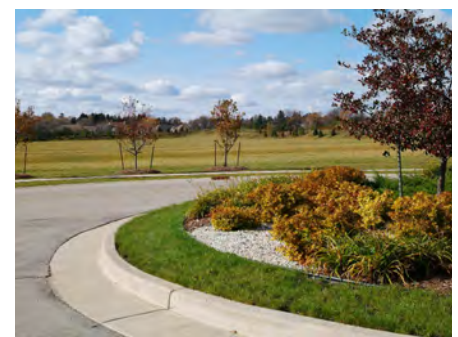
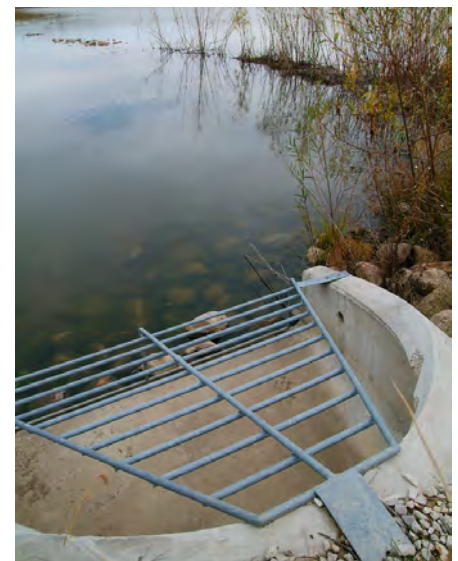
Ayres Associates provided engineering services for the development of the Mequon Business Park. The project consisted of constructing approximately 5,000 linear feet of urban roadway with associated water main, sanitary sewer, storm sewer, stormwater management, curb and gutter, and asphalt paving.

Stormwater management for this project included site grading with two detention basins, swales, and berms. The project included erosion control, two cul-de-sacs, median islands, meandering sidewalk, lift station abandonment, street trees, and approximately 2,150 linear feet of landscaping berms.

Two detention ponds were designed per Milwaukee Metropolitan Sewerage District's (MMSD) Chapter 13 Rules and Regulations and Wisconsin Department of Natural Resources (WDNR) Code 1001 – Wet Detention Ponds. A stormwater management plan for this addition of the park was also prepared per MMSD rules. Hydrologic analysis was completed using SCS TR-55. Pond routing was completed using HydroCAD version 6.0.

An erosion control plan was prepared in accordance with the WDNR Wisconsin Construction Site Best Management Practice Handbook (now referred to as Technical Standards). WDNR permits obtained for this portion of the project included a Chapter 30 Permit, Form 3500-53N – Water Quality Certification, Chapter NR 103 Water Quality Standards, and Form 3400-161 – Notice of Intent (for construction sites over 1 acre in disturbance).

The project involved coordination for utility installations and street lighting.

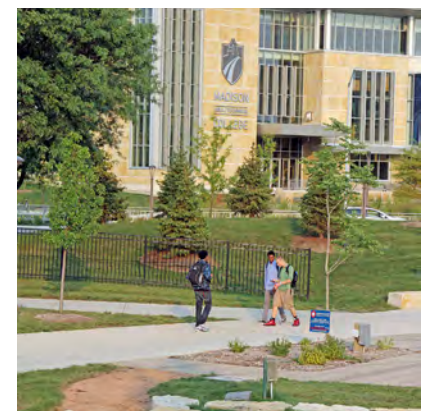


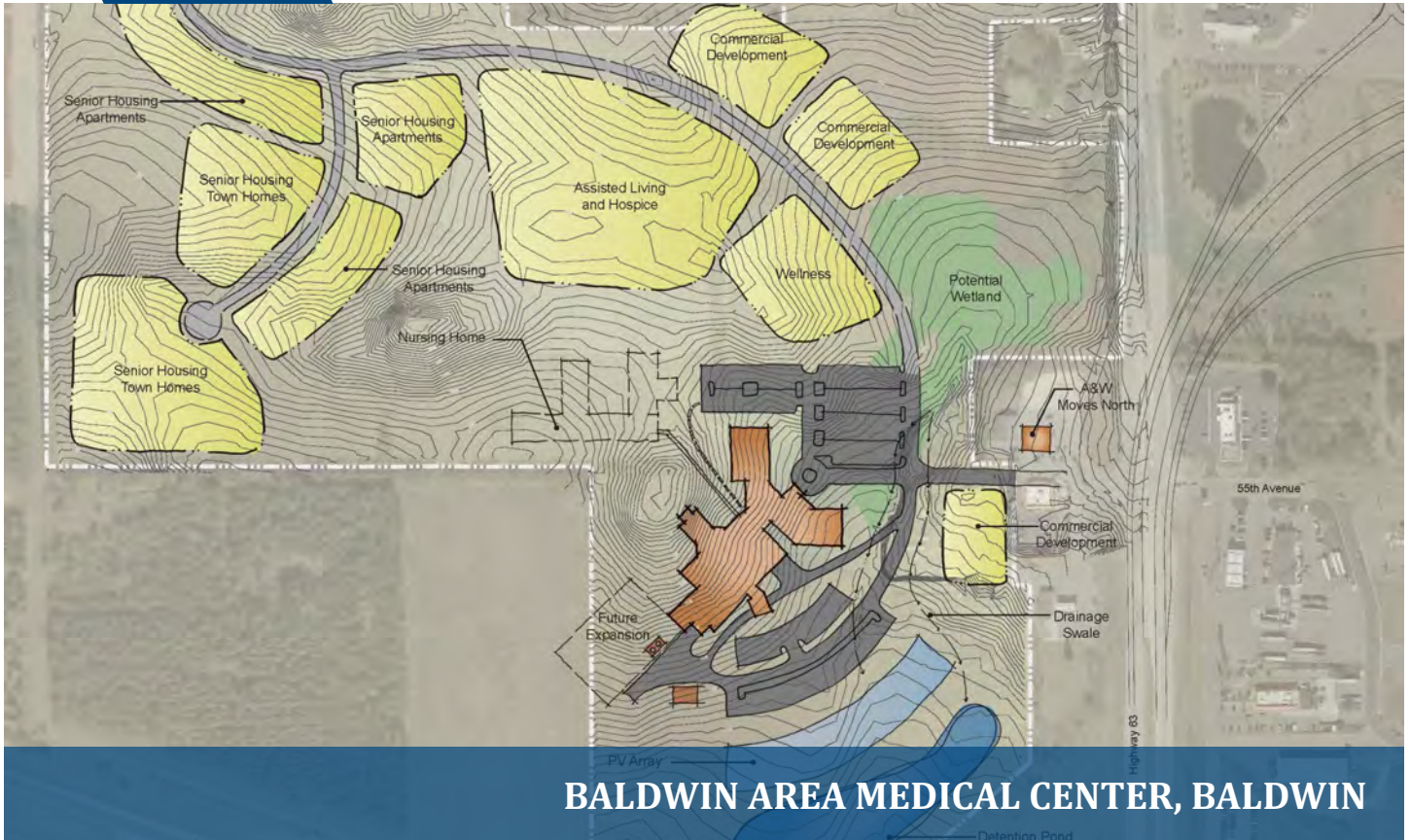


MADISON COLLEGE CAMPUS PLANNING AND DESIGN, MADISON

The Truax Campus of Madison College is home to about 15,000 students. In 2010 the technical college campus began an expansion program that will include construction of four new buildings and related outdoor student spaces and parking, as well as traffic improvements aimed at turning the car-oriented, one-building commuter campus into a traditional, multi-building campus with a strong urban identity that is pedestrian and bike friendly. This project won a 2015 Honor Award from the Wisconsin Chapter of the American Society of Landscape Architects.

The site master plan and Phase 1 design solution builds on the existing campus environmental and drainage corridor patterns, integrating them with new building footprints and required stormwater, drainage, and site circulation systems while providing flexibility when locating future building phases. Outdoor spaces include student gathering and learning areas, landscapes that filter and cleanse site runoff, bike parking, mass transit waiting areas, and night security lighting.



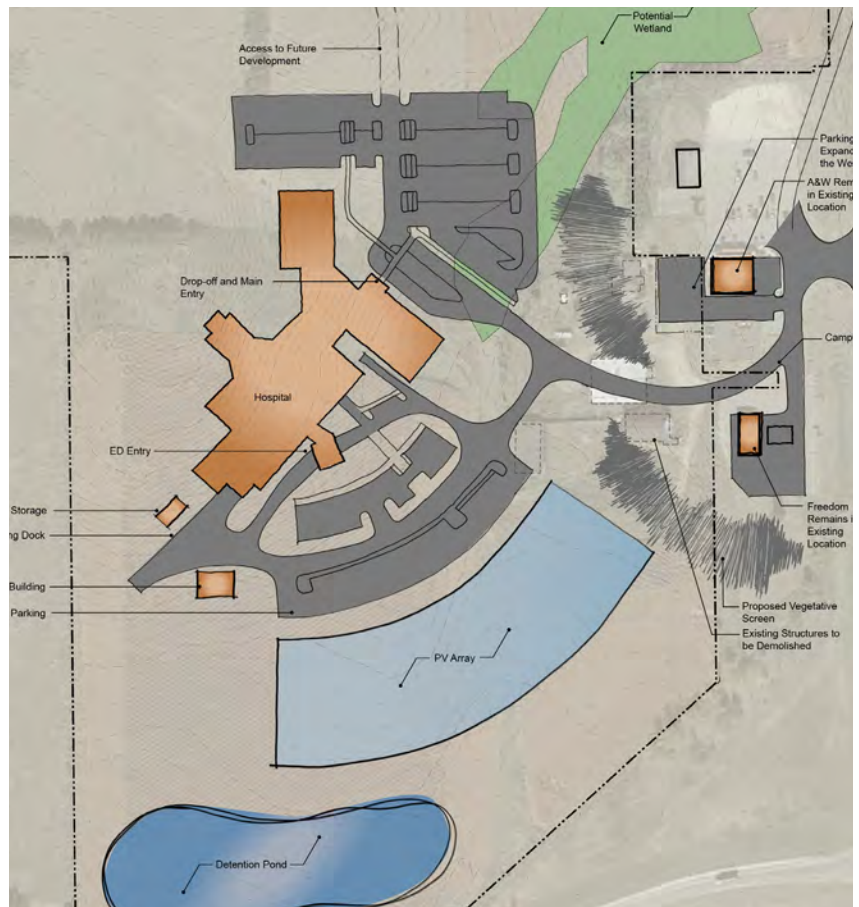


BALDWIN AREA MEDICAL CENTER, BALDWIN

Ayres Associates was retained to provide civil engineering, landscape architecture, and survey services for the Baldwin Area Medical Center’s proposed wellness campus in Baldwin. Initial efforts included master planning and coordination with multiple agencies and groups for the development concept for the 90-plus-acre site.

Site planning and design services were provided through the schematic design, design development, and construction documents phases. Bidding and construction phase support are being provided.

Tasks include regulatory agency coordination; utility coordination; topographic and ALTA survey services; public participation planning; campus master planning; site, grading, utility, and landscape plans; stormwater design; and parking analysis. Landscape architecture tasks include fostering community and pedestrian connectivity and accentuating site and stormwater improvements.





MAYO CLINIC ENGINEERING SERVICES, VARIOUS LOCATIONS

For decades, Mayo Clinic Health System has retained Ayres Associates to provide site civil and utility design and survey services on projects around west-central and northwestern Wisconsin. Projects include:

Mayo Clinic Health System – Eau Claire

- Luther Hospital West Bed Tower
- Luther Hospital Whipple Street Relocation
- Luther Hospital Emergency Department Expansion
- Luther Hospital ICU Expansion and Cath Lab Expansion
- Luther Hospital Linear Accelerator
- Luther Hospital Central Energy Plant
- Luther Hospital Campus Parking Ramp
- Luther Hospital Parking Lots
- Luther Hospital ALTA Survey

Mayo Clinic Health System – Bloomer

- Thompson Street and Parking Alternatives

Mayo Clinic Health System – Barron

- Emergency Department Stormwater Study
- Northland Campus Parking Lot

Mayo Clinic Health System – Osseo

- Campus Master Planning
- Oakridge Campus New Clinic

Mayo Clinic Health System – Menomonie

- Myrtle Werth Hospital Parking Lot

Stormwater best management practice design for some of the parking lots Ayres has designed for Mayo has been used as an example and as an educational tool by local government representatives and regional stormwater forums.

The Eau Claire County Land Conservation Commission presented a Water Quality Leadership award to Mayo Clinic Health System for being “proactive in proposing storm water quality best management practices within the environmentally sensitive Half Moon Lake watershed,” including rain gardens and rock infiltration areas that retain rain and stormwater runoff, allowing it to cool and be naturally filtered before being absorbed into the groundwater system.





PARAMOUNT PLAZA, GRAFTON

Located in the Village of Grafton's historic downtown, Paramount Plaza honors the community's little-known ties to the African-American jazz and blues recording industry of the 1920s and 1930s that produced records in the Village.

The plaza also implements a recommendation from our team's downtown master plan that called for a public space to host community events in the downtown.

The plaza replaces a little-used street and features a performance stage, a water feature, theme lighting, a sound system, a pavement pattern symbolic of a piano keys, and sculpture elements symbolic of musical instruments. It is a center of activity for thousands of visitors who attend markets, fairs, and music events. The plaza has created a new destination, bringing customers to shops and restaurants.

The Wisconsin Chapter of the American Society of Landscape Architects presented a 2010 Award of Merit for the project.





POTTERY PLAZA AND STREETScape, EDGERTON

The Pottery Plaza project involved schematic design through construction documentation work to cap off the prominent “front-yard” area of Edgerton’s newly constructed City Hall. Work consisted of transitioning an existing lawn into a public amenity that expressed the local vernacular through materials and form. The site features sustainable aspects related to vegetation, stormwater, and long-term maintenance.

The final design successfully integrates the existing overhead powerline, multiple sightlines to highlight specific views, varied seating opportunities, signage, and an iconic pottery plaza element. The civic nature of the building is translated into a unique community identity that expresses its historical story while maintaining a focus on the future.

In collaboration with the Wisconsin Department of Transportation, our team developed an extensive streetscape design plan for downtown Edgerton. The plan incorporated salvaging and updating existing historic period lights and adding additional roadway- and pedestrian-scale decorative lighting, brick pavers, tree plantings with decorative grates, pedestrian bump-outs, benches, trash receptacles, bollards, ornamental fencing, and columns.

