



BUDGET AMENDMENT REQUEST

Date 12/28/2016

No. _____

INCREASE

| Account No. | Division | Description | Budget Current | Change | Proposed Budget |
|--------------------|--------------------|-------------------------|----------------|----------|-----------------|
| 002-0000-389-90.00 | Stormwater Utility | Prior Year Fund Balance | \$1,061,780 | \$24,877 | \$1,086,657 ✓ |
| 002-0103-538.64-15 | Stormwater Utility | Trucks & Trailers | \$0 | \$24,877 | \$24,877 ✓ |
| | | | | | |
| | | | | | |
| | | | | | |
| | | | | | |
| | | | | | |
| | | | | | |
| | | | | | |

DECREASE

| Account No. | Division | Description | Budget Current | Change | Proposed Budget |
|-------------|----------|-------------|----------------|--------|-----------------|
| | | | | | |
| | | | | | |
| | | | | | |
| | | | | | |
| | | | | | |
| | | | | | |
| | | | | | |
| | | | | | |
| | | | | | |
| | | | | | |

Explanation:

To add funds for the purchase of a crash trailer.

Requested by: Name *Robert M. ...* Title *P.W. Director*
 Approved by: Assistant Finance Director *Crystal ...*
 Finance Director *Crystal ...*
 City Manager *[Signature]*
 Council Action Required Yes No If "Yes", Date Approved _____
 Date Posted _____ Current Month _____ Posted By _____



National TMA, LLC

3501 S Sanford Ave
Sanford, FL 32773

(321)332-1336

Equipment Estimate

Reg # 87801

Estimate #

1083

Sold To:

City of New Port Richey

Vehicle Information:

Year:

Make:

VIN:

Traffix TL3 Trailer

Date

12/8/2016

Sales Rep:

MC

| Qty | Description | U/M | Unit Price | Total |
|-----|---|-----|------------|------------|
| 1 | Scorpion Trailer Attenuator TL-3, 12 Volt, Complete TL-3 (100 kph Test Level 3) Trailer Attenuator with 12 Volt Electrical System, Automatic Breakaway Brake System, Safety Cables & Standard Reflective Sheeting | ea | 17,695.00 | 17,695.00T |
| 1 | Traffix Manual Arrowboard Uprights Only, Offset design allows clearance for vehicle turning radius. Includes: Both uprights, passenger side winch, painted flat black | ea | 2,241.60 | 2,241.60T |
| 1 | 15 Light Arrowboard, 48" x 96" | ea | 2,350.00 | 2,350.00T |
| 8 | Assembly | hr | 105.00 | 840.00 |
| 1 | Manufacturers Shipping Cost | | 1,500.00 | 1,500.00 |
| 125 | Delivery of Customer Vehicle/Trailer | ML | 2.00 | 250.00T |
| | Sales Tax - Sales Tax 0% | | 0.00% | 0.00 |

This vehicle is being sold with Vehicle Manufacturers Warranties only. Please see vehicles Owner's Manual for more information.

Estimate Total: \$24,876.60

Scorpion® Trailer Attenuator



Features

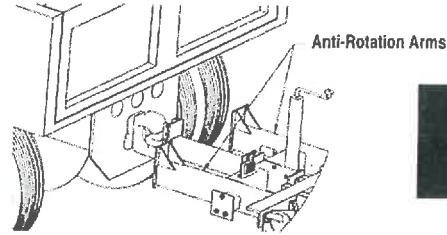
- NCHRP 350 tested and accepted for all mandatory and optional offset and angled impacts
- Only Trailer Attenuator to be tested and accepted with a 10,000 lb host vehicle
- Infinite weight tested and accepted allows the Scorpion Trailer to be used on heavy host vehicles with no upper weight limit
- Single point attachment to standard 20 Ton (minimum) rated pintle hook is quick and easy
- Telescoping Anti-Rotational System (TARS™) minimizes Scorpion Trailer rotation during angled and offset impacts, preventing trailer separation from host vehicle
- Requires little or no modification or additional mounting hardware to host vehicle
- The Scorpion's proven modular design crushes in progressive stages allowing quick and economical replacement of damaged parts
- The unique curved design gives full width protection to the back of the host vehicle and protects the "coffin corners" of the truck
- Rear axle placement improves trailer stability and prevents the tail from "bottoming out" on driveways or uneven surfaces
- Optional Arrow or Message Board can easily be attached to Scorpion Trailer Attenuator

TraFFix
Devices Inc.



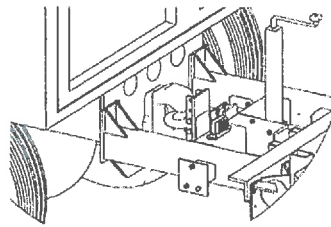
Telescoping Anti-Rotation System (TARS™)

Pre-Impact Condition



Scorpion®
Trailer Attenuator
10002 Series

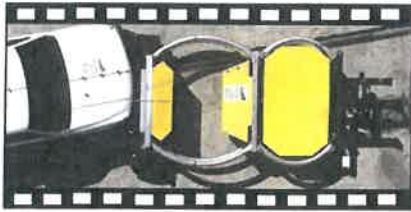
Post-Impact Condition



The Scorpion Trailer attaches directly to the pintle hook. It does not require additional installation, or truck modification, beyond standard factory installed pintle hook and 1/2" steel frame plate.

Upon impact, two heavy duty anti-rotation arms are driven against the frame plate, preventing angular rotation of the Scorpion Trailer during an accident.

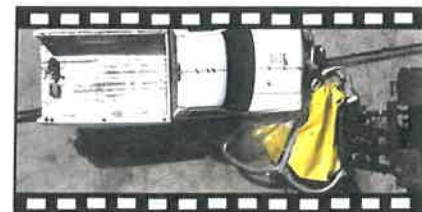
TL-3; 3-53 Offset Angled Test — 4,500 lb vehicle impacts 20,000 lb host vehicle at 62.5 mph (100 kph)



Beginning of impact



Mid-point of impact

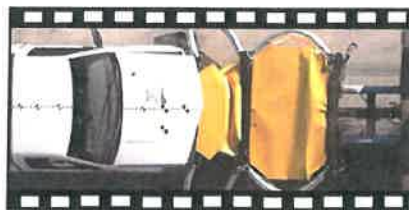


End of impact

TL-3; 3-51m Inline Test — 4,500 lb vehicle impacts 10,000 lb host vehicle at 62.5 mph (100 kph)



Beginning of impact



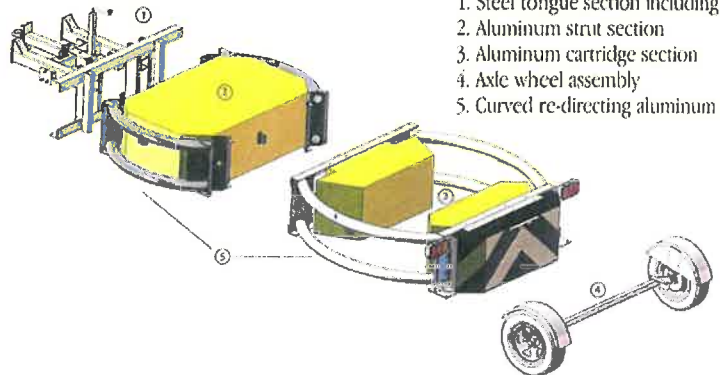
Mid-point of impact



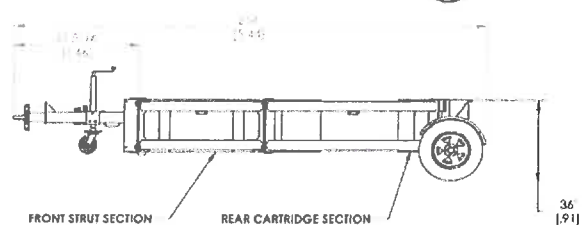
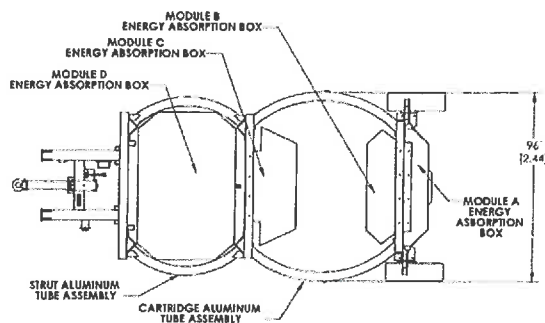
End of impact

Specifications

| | TL2 | TL3-STD | TL3-Euro |
|----------|------------------|------------------|-----------------|
| • Length | 13' 0" (3.96m) | 17' 10" (5.44m) | 17' 10" (5.44m) |
| • Width | 96" (2.44m) | 96" (2.44m) | 96" (2.44m) |
| • Height | 36" (.91m) | 36" (.91m) | 36 (.91m) |
| • Weight | 1240 lbs (562kg) | 1730 lbs (785kg) | 1541lb (700kg) |



1. Steel tongue section including TARS™
2. Aluminum strut section
3. Aluminum cartridge section
4. Axle wheel assembly
5. Curved re-directing aluminum tubes



© Copyright January, 2007 TrafFix Devices, Inc. TrafFix® and Scorpion® are trademarks of TrafFix Devices, Inc. U.S. Patent No. 6,024,341 and 6,581,992 B1 Licensed Under U.S. Patents 6,092,949 and 6,481,920

**TrafFix
Devices Inc.**



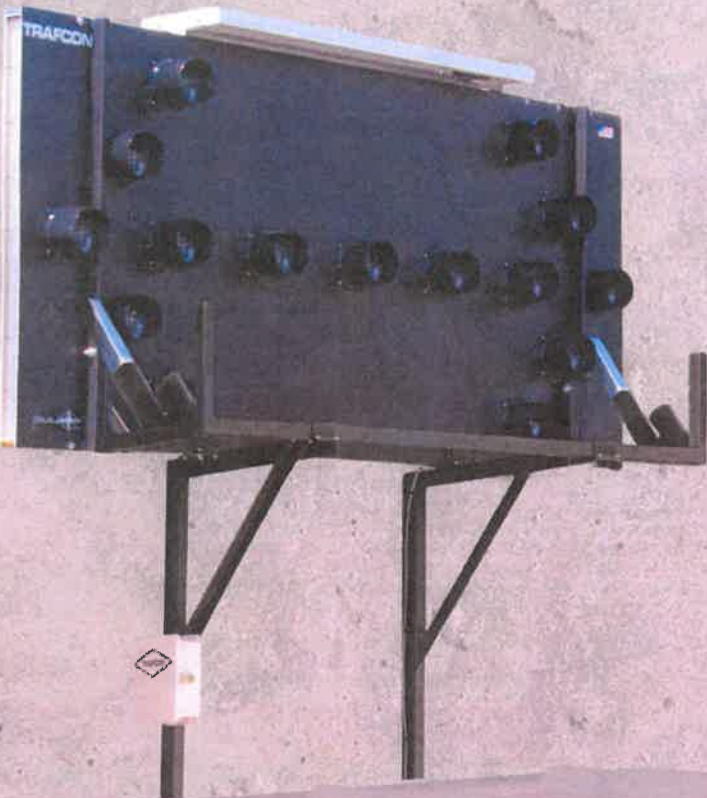
160 Avenida La Pata, San Clemente, CA 92673
(949) 361-5663 FAX (949) 361-9205
www.traffixdevices.com

Distributed by:

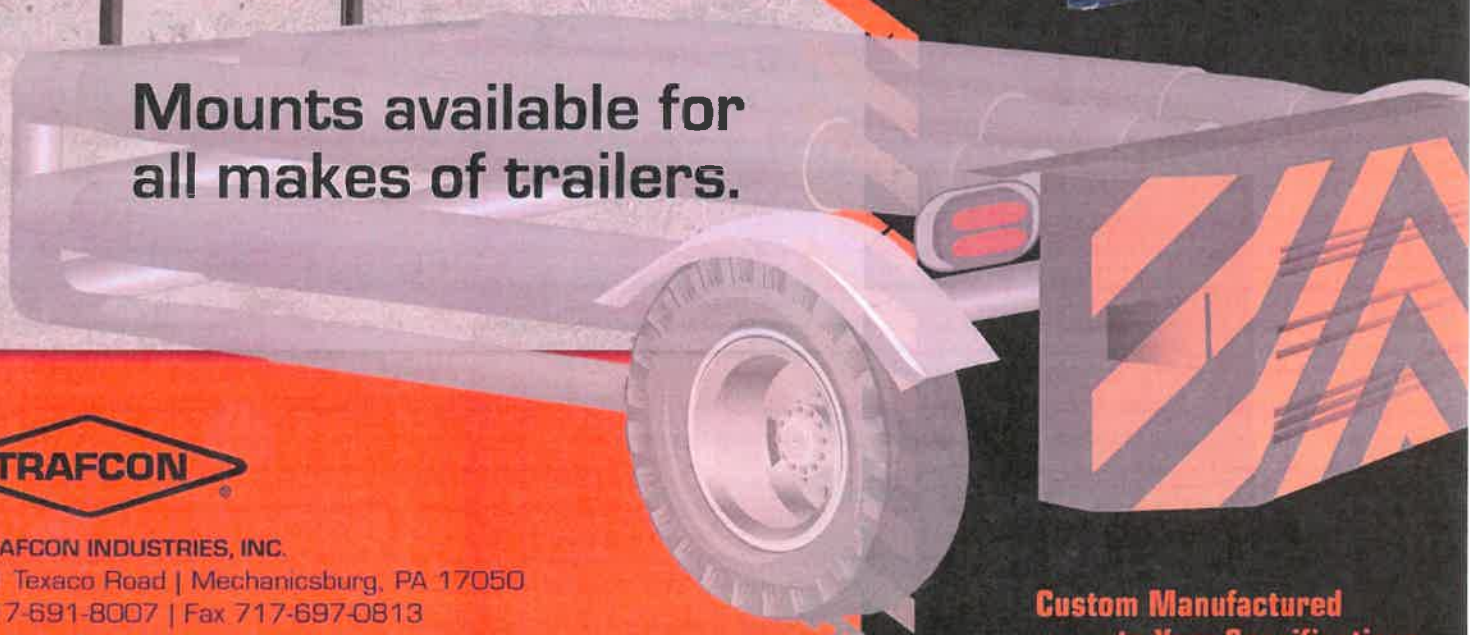




8500 Series Arrowboard for Attenuator Trailers



**Mounts available for
all makes of trailers.**



TRAFCON INDUSTRIES, INC.
81 Texaco Road | Mechanicsburg, PA 17050
717-691-8007 | Fax 717-697-0813
www.trafcon.com

**Custom Manufactured
to Your Specifications**



8500 Series Arrowboard for Attenuator Trailers

STANDARD SPECIFICATIONS

SIGN PANEL

- Length 96 inches
- Height 48 inches
- Width 3 inches
- Construction Sandwich type aluminum
 - Front and back panels 48"x96"x0.63" sheet
 - Frame work - 3"x1" formed channel (welded)
- Lamps Par 46, Amber LED
 - *Pulsar lamp upgrade available
- Lamp hoods 360 degree high impact plastic
- Lamp option 15 or 25 lamp arrow panel

LIFTING MECHANISM

- Power tilt (dual actuators)
- Manual tilt (3500 lb sq. jack)
- Welded steel frame
- Attached to face of arrow panel for stable ride
- Attached to uprights with Trafcon hat brackets

CONTROL SYSTEMS AND CIRCUITY

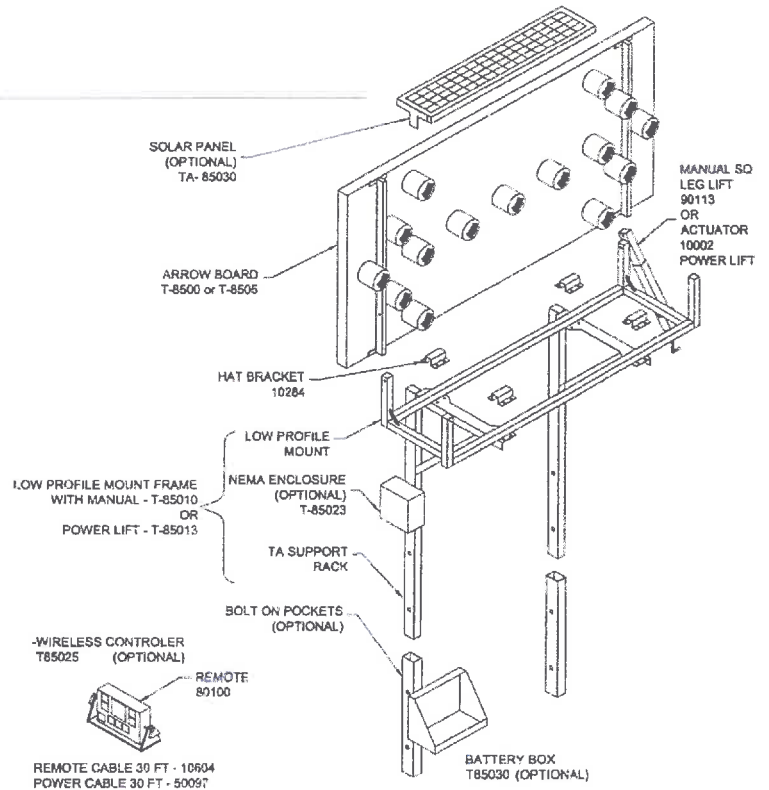
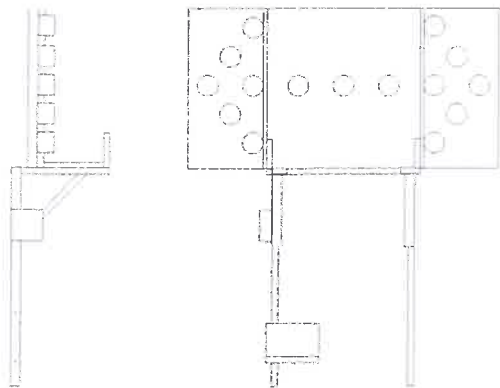
- Voltage 12 volt nominal (supply)
- Circuitry Solid state microprocessor
- Protection Automatic controlled
- Controller Smart Flash II, 30ft. harness
 - * optional wireless upgrade
- Self diagnostic
- Default caution mode
- Touch pad controls
- Back-lit LCD display
- Visual and audible low battery alarm

MOUNTS

- Uprights designed to fit all manufacturers attenuator trailers
- Easy shipping on single skid
- Complete hardware for assembly (bolts and nuts)

OPTIONS

- Solar *55 watt solar panel
 - 12/8 solar regulator
 - Steel battery tray (weld on or bolt on)
 - Battery compartment (poly) and cables
- Mode Lamps 2 inch LED lamps
- Manual Tilt 3500 lbs. square jack
- Power Tilt Dual power actuators 12 volt
- Remote storage NEMA weather proof cabinet
- Remote upgrade wireless option



TRAFCON INDUSTRIES, INC.
 81 Texaco Road | Mechanicsburg, PA 17050
 717-691-8007 | Fax 717-697-0813
www.trafcon.com

