

# Volkswagen



## Of New Port Richey INVENTORY STORAGE LOT

4727 US Hwy 19  
New Port Richey, Florida 34652

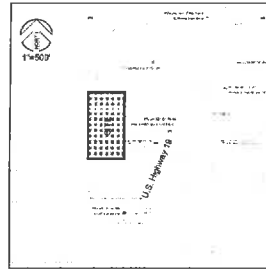
**Owner/Developer:**

S & D GIANT REAL ESTATE LLC  
3330 US Highway 19  
New Port Richey, Florida 34652  
(727) 963-0999  
Scott Fink

**Architect/Engineer:**

SPRING ENGINEERING, INC.  
3014 U.S. Highway 19  
Holiday, Florida 34609  
(727) 938-1516  
Roland P. Dowse, P.E.  
Arthur Pollard

**Location Map:**



SECTION 18 TOWNSHIP 28 SOUTH, RANGE 18 EAST  
28°13'40\"/>

**Index of Drawings:**

- T1 TITLE SHEET
- C1 GENERAL NOTES & DETAILS
- C2 SURVEY/DEMOLITION PLAN
- C3 PHOTOMETRIC PLAN
- C4 SITE PLAN
- C5 PAVING, GRADING & DRAINAGE PLAN
- C6 LANDSCAPE PLAN
- C7 PLANTING & IRRIGATION DETAILS
- C8 NPDES 1
- C9 NPDES 2



**SPRING ENGINEERING, INC.**  
ARCHITECTURE - ENGINEERING - LAND PLANNING  
3014 U.S. HWY. 19, HOLIDAY, FL. (727) 938-1516

**RECEIVED**

**MAY 02 2017**

DEVELOPMENT DEPARTMENT  
CITY OF NEW PORT RICHEY

Approved by DRC 4-27-17

THIS DRAWING AND THE UTILITY LOCATIONS ARE THE PROPERTY OF SPRING ENGINEERING, INC. AND ARE NOT TO BE REPRODUCED, COPIED, EITHER WHOLLY OR IN PART OR PARTIALLY WITHOUT CONSENT. THIS DRAWING IS TO BE USED ONLY FOR THE SITE AND PROJECT IDENTIFIED AND SHALL BE RETURNED UPON REQUEST.

100%  
CONSTRUCTION DOCS.  
1994 EDITION 3.31.17

REV.	DATE	DESCRIPTION
1	4.27.17	NEW CONTRACT DOCUMENTS
2	4.27.17	REVISED PER CITY COMMENTS
3	4.27.17	REVISED PER CITY COMMENTS
4	4.27.17	REVISED PER CITY COMMENTS
5	4.27.17	REVISED PER CITY COMMENTS



**Volkswagen**  
OF New Port Richey  
INVENTORY STORAGE LOT  
New Port Richey, Florida 34652

DATE PLOTTED: July 22, 2016

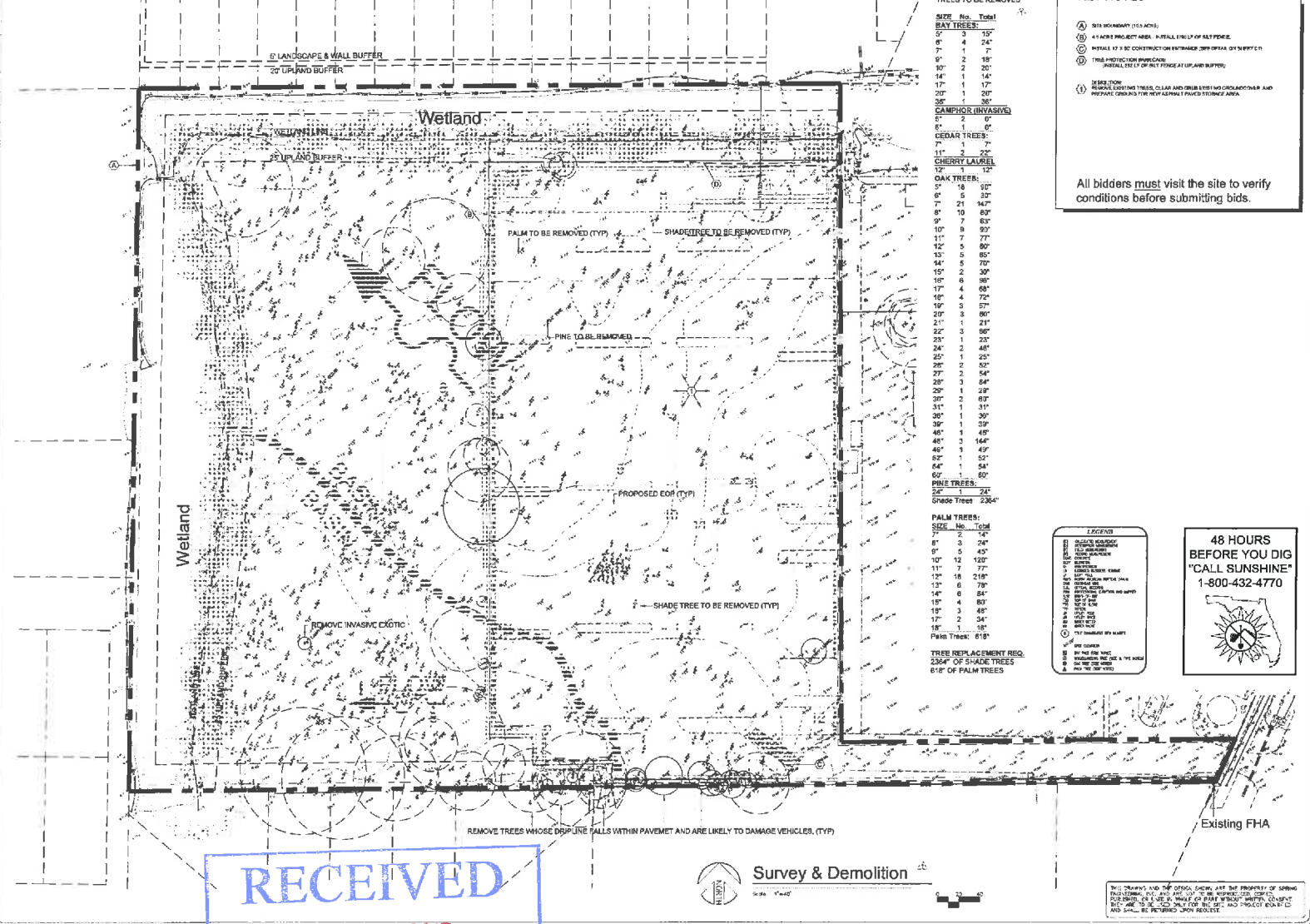
**SPRING ENGINEERING, INC.**  
ENGINEERING • LAND PLANNING • ARCHITECTURE  
3014 U.S. HWY 19, HOLIDAY, FL. (727) 938-1516  
FL. REG. NO. 00001818 & LICENSE NO. 0001747



TITLE SHEET  
DESIGNED BY: APF  
DRAWN BY: ZWP  
CHECKED BY: APF  
JOB NO.  
DATE: 2014-238  
SHEET NO.  
**T1**



SECTION 18, TOWNSHIP 26 SOUTH, RANGE 16 EAST PASCO COUNTY, FLORIDA



**TREES TO BE REMOVED**

SIZE	No.	Total
<b>BAY TREES:</b>		
5"	3	3
6"	4	4
7"	1	1
8"	2	2
10"	2	2
14"	1	1
17"	1	1
20"	1	1
35"	1	1
<b>CAMPBELL (INVASIVE)</b>		
6"	1	1
8"	2	2
<b>CEDAR TREES:</b>		
7"	1	1
11"	2	2
<b>CHERRY LAUREL</b>		
12"	1	1
<b>OAK TREES:</b>		
5"	16	16
6"	5	30
7"	21	147
8"	10	80
9"	7	63
10"	8	80
11"	7	77
12"	5	60
13"	5	65
14"	5	70
15"	2	30
16"	6	48
17"	4	68
18"	3	54
19"	3	57
20"	3	60
21"	3	63
22"	3	66
23"	1	23
24"	2	48
25"	1	25
26"	2	52
27"	2	54
28"	3	84
29"	1	29
30"	2	60
31"	1	31
36"	1	36
39"	1	39
40"	1	40
46"	3	144
46"	1	49
52"	1	52
64"	1	64
67"	1	67
<b>PINE TREES:</b>		
24"	2	24
Shade Trees: 2364*		
<b>PALM TREES:</b>		
7"	2	14
8"	3	24
9"	5	45
10"	12	120
11"	7	77
12"	18	216
13"	6	78
14"	6	84
15"	4	60
16"	3	48
17"	2	34
18"	1	18
Palm Trees: 618*		
TREES REPLACEMENT REQ.		
2364* OF SHADE TREES		
618* OF PALM TREES		

**KEY NOTES**

- (A) SITE BOUNDARY (1/4" SCALE)
- (B) 4.5 ACRE PROJECT AREA, INSTALL 1" DIA. OF 60' PIPE
- (C) INSTALL 1/2" X 8" CONSTRUCTION STRAPPER (SEE DETAILS ON SHEET 18)
- (D) TREE PROTECTION BOUNDARY (INSTALL 1" DIA. OF 60' PIPE AT 10' BUFFER)

REMARK:  
 REMOVE LOGGING TRAILS, CLEAR AND GRUB EXISTING PROPOSED DRIVEWAY AND PROTECT EXISTING TREE WITH APPROX. 10' BUFFER ZONE AREA.

All bidders must visit the site to verify conditions before submitting bids.

**LEGEND**

- (A) SITE BOUNDARY
- (B) PROJECT AREA
- (C) CONSTRUCTION STRAPPER
- (D) TREE PROTECTION BOUNDARY
- (E) TREE TO BE REMOVED
- (F) TREE TO BE REPLACED
- (G) TREE TO BE BRANCHED
- (H) SHADE TREE TO BE REMOVED
- (I) PALM TREE TO BE REMOVED
- (J) REMOVE INVASIVE EXOTIC
- (K) REMOVE TREES WHOSE DRIP LINE FALLS WITHIN PAVEMENT AND ARE LIKELY TO DAMAGE VEHICLES (TYP)
- (L) PROPOSED DRIVEWAY
- (M) EXISTING DRIVEWAY
- (N) EXISTING FEA
- (O) WETLAND
- (P) 8' LANDSCAPE & WALL BUFFER
- (Q) 20' UPLAND BUFFER

**48 HOURS BEFORE YOU DIG**  
 "CALL SUNSHINE"  
 1-800-432-4770



RECEIVED

MAY 02 2017

DEVELOPMENT DEPARTMENT  
 CITY OF NEW PORT RICHEY

Approved by DR# 4-27-17

100%  
 CONSTRUCTION BIDDING  
 ISSUE DATE: 3.21.17

NO.	DATE	DESCRIPTION
1	3/21/17	ISSUED FOR BIDDING
2	3/21/17	ISSUED FOR BIDDING
3	3/21/17	ISSUED FOR BIDDING
4	3/21/17	ISSUED FOR BIDDING
5	3/21/17	ISSUED FOR BIDDING
6	3/21/17	ISSUED FOR BIDDING
7	3/21/17	ISSUED FOR BIDDING
8	3/21/17	ISSUED FOR BIDDING
9	3/21/17	ISSUED FOR BIDDING
10	3/21/17	ISSUED FOR BIDDING
11	3/21/17	ISSUED FOR BIDDING
12	3/21/17	ISSUED FOR BIDDING
13	3/21/17	ISSUED FOR BIDDING
14	3/21/17	ISSUED FOR BIDDING
15	3/21/17	ISSUED FOR BIDDING
16	3/21/17	ISSUED FOR BIDDING
17	3/21/17	ISSUED FOR BIDDING
18	3/21/17	ISSUED FOR BIDDING
19	3/21/17	ISSUED FOR BIDDING
20	3/21/17	ISSUED FOR BIDDING
21	3/21/17	ISSUED FOR BIDDING
22	3/21/17	ISSUED FOR BIDDING
23	3/21/17	ISSUED FOR BIDDING
24	3/21/17	ISSUED FOR BIDDING
25	3/21/17	ISSUED FOR BIDDING
26	3/21/17	ISSUED FOR BIDDING
27	3/21/17	ISSUED FOR BIDDING
28	3/21/17	ISSUED FOR BIDDING
29	3/21/17	ISSUED FOR BIDDING
30	3/21/17	ISSUED FOR BIDDING
31	3/21/17	ISSUED FOR BIDDING
32	3/21/17	ISSUED FOR BIDDING
33	3/21/17	ISSUED FOR BIDDING
34	3/21/17	ISSUED FOR BIDDING
35	3/21/17	ISSUED FOR BIDDING
36	3/21/17	ISSUED FOR BIDDING
37	3/21/17	ISSUED FOR BIDDING
38	3/21/17	ISSUED FOR BIDDING
39	3/21/17	ISSUED FOR BIDDING
40	3/21/17	ISSUED FOR BIDDING
41	3/21/17	ISSUED FOR BIDDING
42	3/21/17	ISSUED FOR BIDDING
43	3/21/17	ISSUED FOR BIDDING
44	3/21/17	ISSUED FOR BIDDING
45	3/21/17	ISSUED FOR BIDDING
46	3/21/17	ISSUED FOR BIDDING
47	3/21/17	ISSUED FOR BIDDING
48	3/21/17	ISSUED FOR BIDDING
49	3/21/17	ISSUED FOR BIDDING
50	3/21/17	ISSUED FOR BIDDING
51	3/21/17	ISSUED FOR BIDDING
52	3/21/17	ISSUED FOR BIDDING
53	3/21/17	ISSUED FOR BIDDING
54	3/21/17	ISSUED FOR BIDDING
55	3/21/17	ISSUED FOR BIDDING
56	3/21/17	ISSUED FOR BIDDING
57	3/21/17	ISSUED FOR BIDDING
58	3/21/17	ISSUED FOR BIDDING
59	3/21/17	ISSUED FOR BIDDING
60	3/21/17	ISSUED FOR BIDDING
61	3/21/17	ISSUED FOR BIDDING
62	3/21/17	ISSUED FOR BIDDING
63	3/21/17	ISSUED FOR BIDDING
64	3/21/17	ISSUED FOR BIDDING
65	3/21/17	ISSUED FOR BIDDING
66	3/21/17	ISSUED FOR BIDDING
67	3/21/17	ISSUED FOR BIDDING
68	3/21/17	ISSUED FOR BIDDING
69	3/21/17	ISSUED FOR BIDDING
70	3/21/17	ISSUED FOR BIDDING
71	3/21/17	ISSUED FOR BIDDING
72	3/21/17	ISSUED FOR BIDDING
73	3/21/17	ISSUED FOR BIDDING
74	3/21/17	ISSUED FOR BIDDING
75	3/21/17	ISSUED FOR BIDDING
76	3/21/17	ISSUED FOR BIDDING
77	3/21/17	ISSUED FOR BIDDING
78	3/21/17	ISSUED FOR BIDDING
79	3/21/17	ISSUED FOR BIDDING
80	3/21/17	ISSUED FOR BIDDING
81	3/21/17	ISSUED FOR BIDDING
82	3/21/17	ISSUED FOR BIDDING
83	3/21/17	ISSUED FOR BIDDING
84	3/21/17	ISSUED FOR BIDDING
85	3/21/17	ISSUED FOR BIDDING
86	3/21/17	ISSUED FOR BIDDING
87	3/21/17	ISSUED FOR BIDDING
88	3/21/17	ISSUED FOR BIDDING
89	3/21/17	ISSUED FOR BIDDING
90	3/21/17	ISSUED FOR BIDDING
91	3/21/17	ISSUED FOR BIDDING
92	3/21/17	ISSUED FOR BIDDING
93	3/21/17	ISSUED FOR BIDDING
94	3/21/17	ISSUED FOR BIDDING
95	3/21/17	ISSUED FOR BIDDING
96	3/21/17	ISSUED FOR BIDDING
97	3/21/17	ISSUED FOR BIDDING
98	3/21/17	ISSUED FOR BIDDING
99	3/21/17	ISSUED FOR BIDDING
100	3/21/17	ISSUED FOR BIDDING

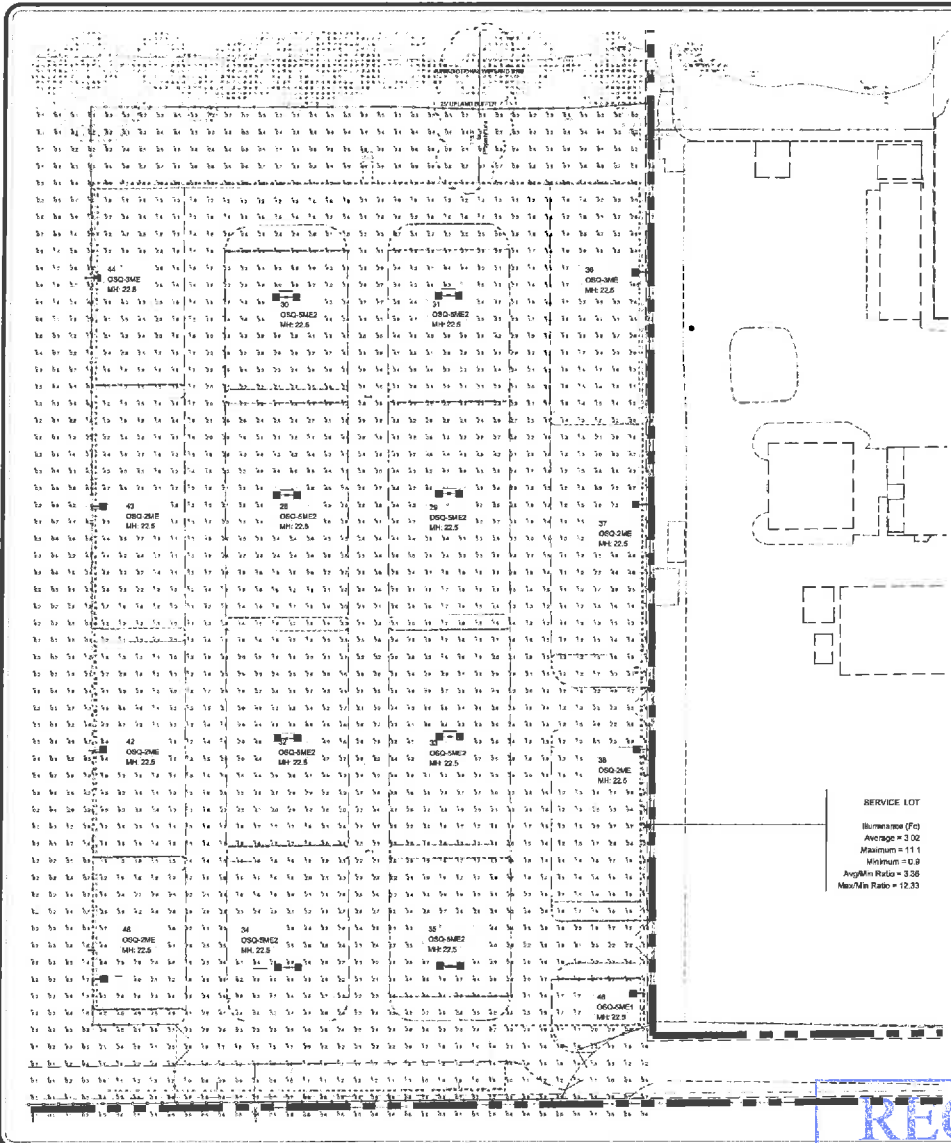
**Volkswagen**  
 of New Port Richey  
 INVENTORY STORAGE LOT  
 4727 US Hwy 19  
 New Port Richey, Florida 34652

**SPRING ENGINEERING, INC.**  
 ENGINEERS • LAND PLANNING • ARCHITECTURE  
 3014 U.S. HWY 19, MCLINDY, FL 32271 385-1516  
 F. CO. NO. 90629M & LICENSE NO. AM-030747

**SE**  
 SURVEY & DEMOLITION

DRAWN BY: ADP  
 CHECKED BY: BWS  
 JOB NO.: 2014-239  
 DATE: 3/21/17

C2



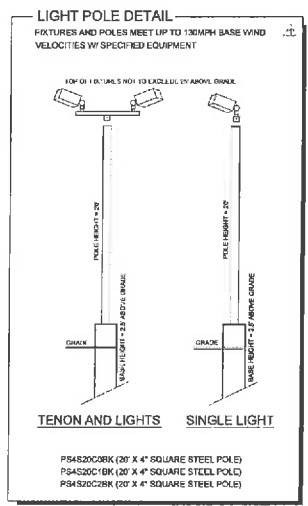
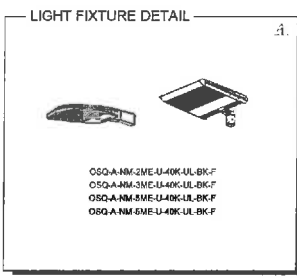
Symbol	Qty	Label	Arrangement	Lumen/amp	LLF	Total Watts	Description	Lum. Watts
1	5	OSQ-2ME	SINGLE	26963	1.000	1075	OSQ-A-NM-2ME-U-40K-UL-BK-F	215
2	2	OSQ-3ME	SINGLE	26963	1.000	470	OSQ-A-NM-3ME-U-40K-UL-BK-F	215
3	1	OSQ-EMET	SINGLE	24666	1.000	215	OSQ-A-NM-EME-U-40K-UL-BK-F	215
4	16	OSQ-3ME2	RACK-BACK	24666	1.000	3440	OSQ-A-NM-3ME2-U-40K-UL-BK-F	215

Label	Avg	Max	Min	Avg/Min	Max/Min
SERVICE LOT	3.02	11.1	0.8	3.38	12.33

Footcandles calculated using predicted lumen value after 60K hours of operation

ADDITIONAL EQUIPMENT:  
 PS4S20C0BK (20' X 4' SQUARE STEEL POLE)  
 PS4S20C1BK (20' X 4' SQUARE STEEL POLE)  
 PS4S20C2BK (20' X 4' SQUARE STEEL POLE)  
 OSQ-DABK (DIRECT MOUNT)

FIXTURES AND POLES MEET UP TO 130MPH BASE WIND VELOCITIES W/ SPECIFIED EQUIPMENT



48 HOURS BEFORE YOU DIG "CALL SUNSHINE" 1-800-432-4770

**RECEIVED**

**MAY 02 2017**

DEVELOPMENT DEPARTMENT  
 CITY OF NEW PORT RICHEY

Approved by DRC 4-27-17

100%  
 FORESTING 8005  
 1924 E. 17<sup>th</sup> 3.31.17

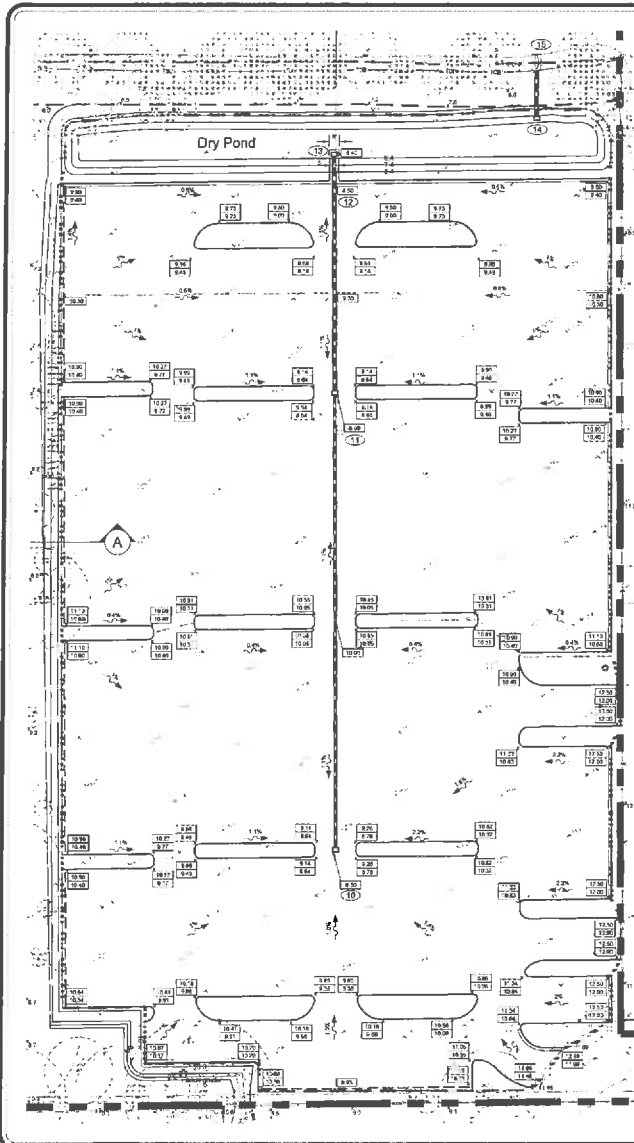
CONTRACT 3416  
 03/2016

**Volkswagen**  
 Of New Port Richey  
 INVENTORY STORAGE LOT  
 4177 US Hwy 19  
 New Port Richey, Florida 34852

**SPRING ENGINEERING, INC.**  
 ENGINEERING + LAND PLANNING + ARCHITECTURE  
 3014 U.S. HWY. 19, HOLIDAY, FL 32731 938-1016  
 P. CO. NO. 90001598 & LICENSE NO. AN-0519147

PHOTOMETRIC PLAN  
 DRAWN BY: JRP  
 CHECKED BY: JRP  
 JOB NO. 1614-230  
 SHEET NO. 03





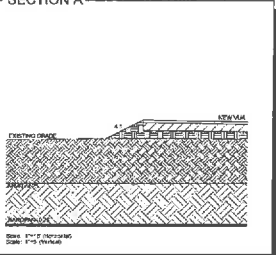
**CALCULATIONS FOR STORM SEWER DESIGN**

FROM STRUCTURE			TO STRUCTURE			DRAIN AREA (ACRES)	RUNOFF COEF	INCR C x A	TOTAL TOC (MM)	TOTAL RUNOFF (CFS)	PIPE SIZE (IN)	CAP FULL (CFS)	LINE SLOPE (%)	LINE LENGTH (FT)	AVE VEL (FT/S)			
ID	INLET (FT)	INVERT (FEET)	ID	INLET (FT)	INVERT (FEET)													
S10	8.50	5.50	S11	8.50	4.80	1.23	0.9	1.65	1.85	15	6.38	19.59	24.78	15	0.2%	270	3.8	
S11	8.50	4.50	S13	8.40	3.45	8.46	1.81	0.9	1.45	3.10	15	6.38	19.78	24.78	20	0.8%	155	8.4
S12	8.50	NA	POND	6.4	NA	0.49	0.9	0.44	0.44	15	6.38	2.81	FLUME	NA	NA	NA	NA	
S14	7.81	4.44	6.44	S15	MES	4.25	6.25	OCS	NA	NA	NA	15.90	24.78	16	0.5%	37	5.0	

DCIA = (3.55 AC VUA / 4.23 AC BASIN) x 100 = 83.9% (USE 90% AS A CONSERVATIVE VALUE)  
 DN = B1 (TR-55 SOIL GROUP B, OPEN SPACE, GOOD CONDITION) = POST-DEVELOPMENT ONLY.

All bidders must visit the site to verify conditions before submitting bids.

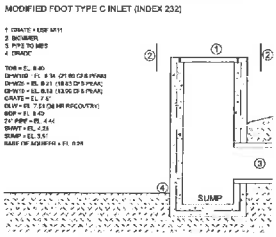
**SECTION A**



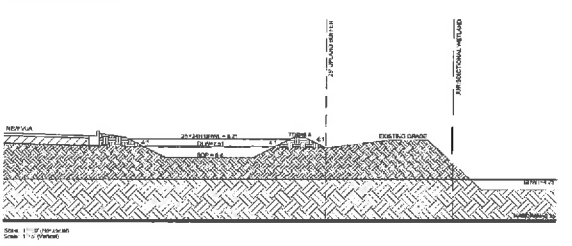
**STORM STRUCTURES**

- 11. INSTALL FOOT-TYPE C INLET (DRAINAGE) 18" x 18" x 18" (INDEX 232)
- 12. INSTALL FOOT-TYPE C INLET (DRAINAGE) 18" x 18" x 18" (INDEX 232)
- 13. INSTALL 18" x 18" x 18" (INDEX 232) WITH 18" x 18" x 18" (INDEX 232) DISCONNECT TO POND
- 14. INSTALL CONTROL STRUCTURE (INDEX 232) WITH 18" x 18" x 18" (INDEX 232)
- 15. INSTALL 18" x 18" x 18" (INDEX 232)

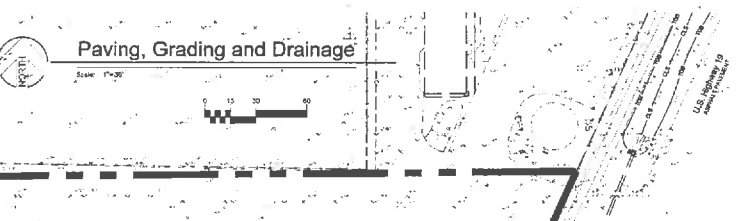
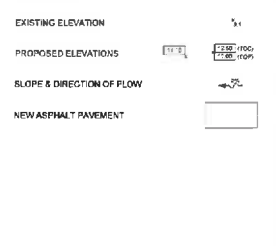
**OUTFALL CONTROL STRUCTURE**



**POND SECTION**



**LEGEND**



**48 HOURS BEFORE YOU DIG "CALL SUNSHINE" 1-800-432-4770**

RECEIVED

MAY 02 2017

DEVELOPMENT DEPARTMENT  
CITY OF NEW PORT RICHEY

Approved by DRC 4-27-17

1"=60'  
CONSTRUCTION DOCUMENTS  
DATE: 3.31.17

---

**Volkswagen**  
Of New Port Richey  
INVENTORY STORAGE LOT

4727 US Hwy 19  
New Port Richey, Florida 34652

---

CONTRACT DATE: July 2016

**SPRING ENGINEERING, INC.**  
ENGINEERING • LAND PLANNING • ARCHITECTURE  
3014 U.S. HWY. 19, HOLIDAY, FL 32701 935-1516  
FL CEA NO. 66099-A & LICENSE NO. 04-001147

---

**SE**

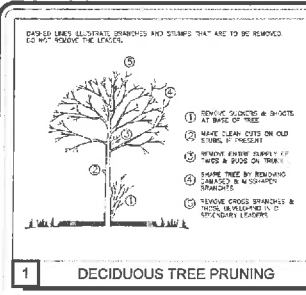
PAVING, GRADING AND DRAINAGE PLAN

---

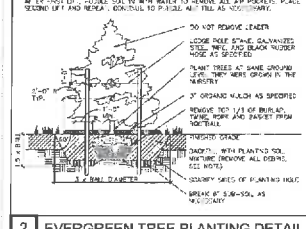
DESIGNED BY: ADP  
DRAWN BY: JWP  
CHECKED BY: JWP  
JOB NO. 1714-238

C5

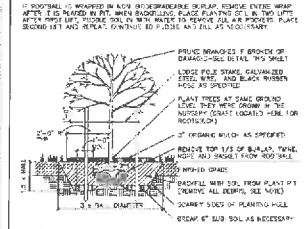




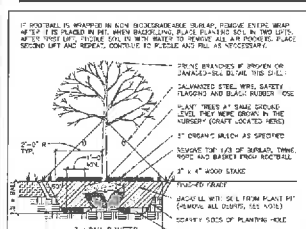
1 DECIDUOUS TREE PRUNING



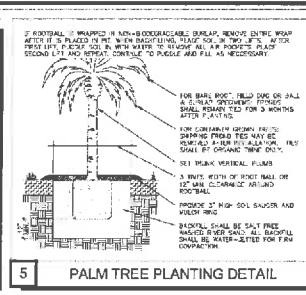
2 EVERGREEN TREE PLANTING DETAIL



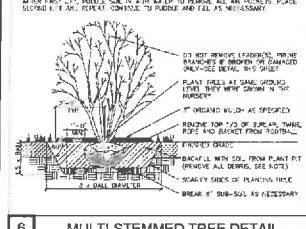
3 CANOPY TREE (2" or less) DETAIL



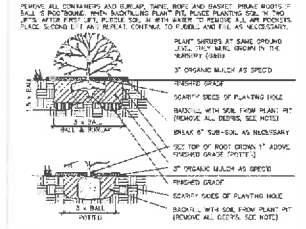
4 CANOPY TREE (2" cal.) DETAIL



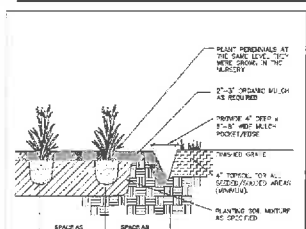
5 PALM TREE PLANTING DETAIL



6 MULTI-STEMMED TREE DETAIL



7 SHRUB PLANTING DETAIL



8 GROUNDCOVER PLANTING DETAIL

IRRIGATION GENERAL NOTES

1. PLAN IS SHOWN ONLY. FINAL LOCATION OF UNITS AND HEADS SHALL BE DETERMINED BY THE CONTRACTOR. THE CONTRACTOR SHALL BE RESPONSIBLE FOR OBTAINING ALL NECESSARY PERMITS AND APPROVALS. THE POINT OF CONNECTION SHALL BE AS NOTED ON THE PLAN.

2. THE CONTRACTOR SHALL VERIFY EXISTING SITE CONDITIONS AND DESIGN THAT ALL LOCAL CODES ARE MET.

3. THE CONTRACTOR SHALL VERIFY EXISTING SITE CONDITIONS AND DESIGN THAT ALL LOCAL CODES ARE MET.

4. CONTRACTOR SHALL VERIFY EXISTING SITE CONDITIONS AND DESIGN THAT ALL LOCAL CODES ARE MET.

5. THE CONTRACTOR SHALL VERIFY EXISTING SITE CONDITIONS AND DESIGN THAT ALL LOCAL CODES ARE MET.

6. THE CONTRACTOR SHALL VERIFY EXISTING SITE CONDITIONS AND DESIGN THAT ALL LOCAL CODES ARE MET.

7. THE CONTRACTOR SHALL VERIFY EXISTING SITE CONDITIONS AND DESIGN THAT ALL LOCAL CODES ARE MET.

8. THE CONTRACTOR SHALL VERIFY EXISTING SITE CONDITIONS AND DESIGN THAT ALL LOCAL CODES ARE MET.

9. THE CONTRACTOR SHALL VERIFY EXISTING SITE CONDITIONS AND DESIGN THAT ALL LOCAL CODES ARE MET.

10. THE CONTRACTOR SHALL VERIFY EXISTING SITE CONDITIONS AND DESIGN THAT ALL LOCAL CODES ARE MET.

11. THE CONTRACTOR SHALL VERIFY EXISTING SITE CONDITIONS AND DESIGN THAT ALL LOCAL CODES ARE MET.

12. THE CONTRACTOR SHALL VERIFY EXISTING SITE CONDITIONS AND DESIGN THAT ALL LOCAL CODES ARE MET.

13. THE CONTRACTOR SHALL VERIFY EXISTING SITE CONDITIONS AND DESIGN THAT ALL LOCAL CODES ARE MET.

14. THE CONTRACTOR SHALL VERIFY EXISTING SITE CONDITIONS AND DESIGN THAT ALL LOCAL CODES ARE MET.

15. THE CONTRACTOR SHALL VERIFY EXISTING SITE CONDITIONS AND DESIGN THAT ALL LOCAL CODES ARE MET.

16. THE CONTRACTOR SHALL VERIFY EXISTING SITE CONDITIONS AND DESIGN THAT ALL LOCAL CODES ARE MET.

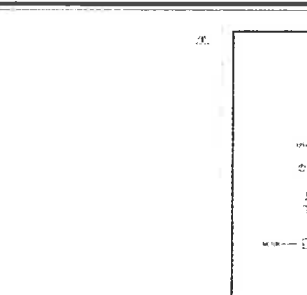
17. THE CONTRACTOR SHALL VERIFY EXISTING SITE CONDITIONS AND DESIGN THAT ALL LOCAL CODES ARE MET.

18. THE CONTRACTOR SHALL VERIFY EXISTING SITE CONDITIONS AND DESIGN THAT ALL LOCAL CODES ARE MET.

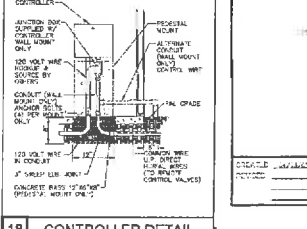
19. THE CONTRACTOR SHALL VERIFY EXISTING SITE CONDITIONS AND DESIGN THAT ALL LOCAL CODES ARE MET.

20. THE CONTRACTOR SHALL VERIFY EXISTING SITE CONDITIONS AND DESIGN THAT ALL LOCAL CODES ARE MET.

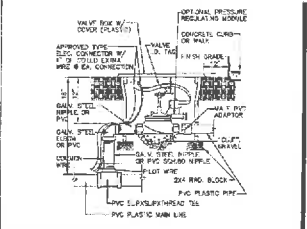
13 SLEEVE UNDER WALK OR ROAD



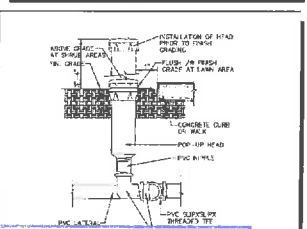
14 4" & 6" POP-UP LAWN/SHRUB HEAD



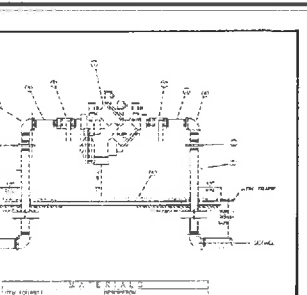
15 REMOTE CONTROL VALVE DETAIL



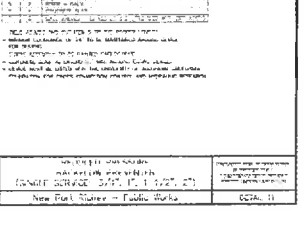
16 ATMOSPHERIC VACUUM BREAKER



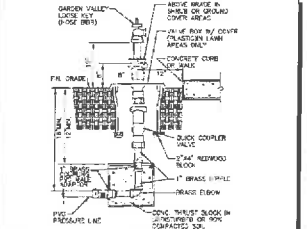
17 QUICK COUPLER/HOSE BIBB DETAIL



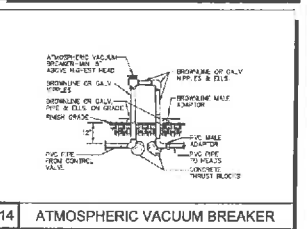
18 CONTROLLER DETAIL



19 SLEEVE UNDER WALK OR ROAD



20 4" & 6" POP-UP LAWN/SHRUB HEAD



21 ATMOSPHERIC VACUUM BREAKER

0008  
CONTRACT NO. 2008  
DATE: 03/17/10

CONTRACTOR: VOLKSWAGEN OF NEW PORT RICHEY INVENTORY STORAGE LOT  
4727 U.S. HWY. 19  
NEW PORT RICHEY, FLORIDA 34662

DATE: 07/2016

CONTRACTOR: SPRING ENGINEERING, INC.  
ENGINEERING • LAND PLANNING • ARCHITECTURE  
3014 U.S. HWY. 19, HOLIDAY, FL 32731 938.103.6  
FL CIVIL AND SURVEYING & LICENSE NO. AN-0001474

PLANTING AND IRRIGATION DETAILS  
DESIGNED BY: ADP  
DRAWN BY: ADP  
CHECKED BY: ADP  
JOB NO.

SCALE: 1" = 4'

RECEIVED  
MAY 02 2017  
DEVELOPMENT DEPARTMENT  
CITY OF NEW PORT RICHEY

Approved by DRC 4-27-17



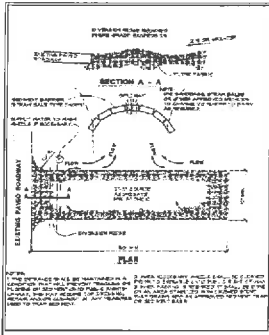


Figure 4.1a: Temporary Gravel Catchment Details

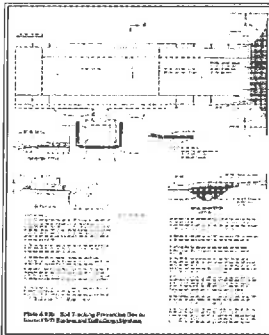


Figure 4.1b: Soil Tracking Prevention Details

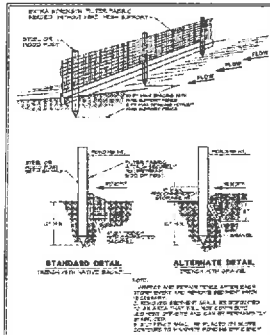


Figure 4.1c: Silt Fence

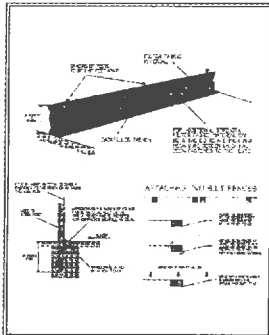


Figure 4.1d: Installing a Filter Fabric Silt Fence

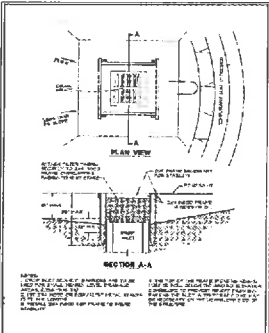


Figure 4.1e: Silt Fence Drop Inlet Sediment Basin

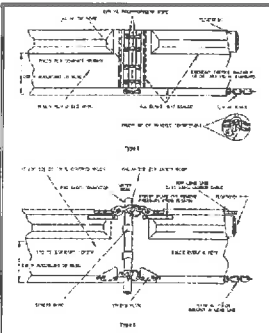


Figure 4.1f: Type I and II Floating Turbidity Barriers

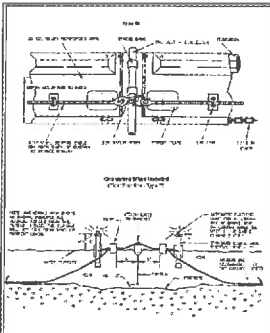


Figure 4.1g: Type III Floating Turbidity Barrier

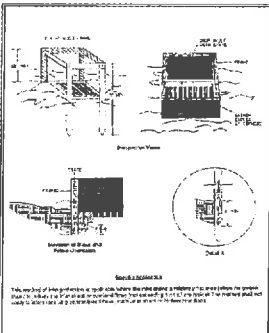


Figure 4.1h: Filter Fabric Drop Inlet Sediment Filter

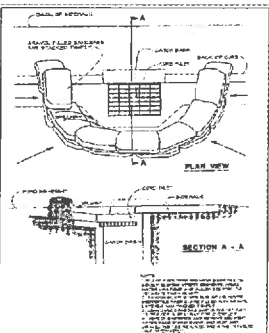


Figure 4.1a: Curb Inlet Sediment Basin

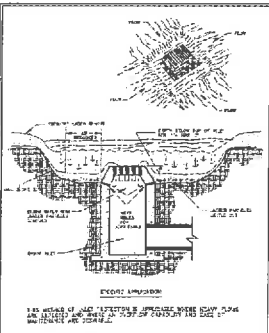


Figure 4.1b: Excavated Drop Inlet Sediment Trap

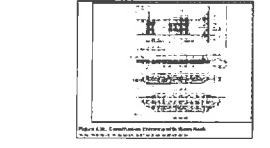
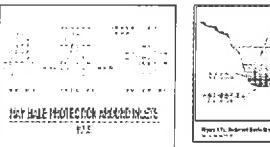


Figure 4.1d: Stormwater Protection Appurtenances

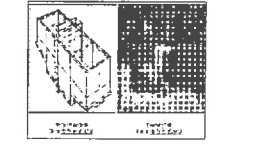
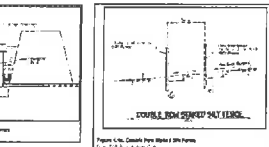


Figure 4.1f: Stormwater Protection Appurtenances

NATIONAL POLLUTANT DISCHARGE ELIMINATION SYSTEM DETAILS

**Volkswagen**  
Of New Port Richey  
INVENTORY STORAGE LOT  
4727 US Hwy 19  
New Port Richey, Florida 34652

PREPARED FOR: S & D GIANT REAL ESTATE LLC  
3838 US Highway 19  
New Port Richey, Florida 34652  
(727) 955-9999

APPROVED BY: SPRING ENGINEERING, INC.  
3014 U.S. Highway 19  
Holiday, Florida 34691  
(727) 838-1518

DATE: 13 APRIL 2017  
TWS: ATP  
TWS: ATP  
CNS: RPD

NO. 2014-23B

**SPRING ENGINEERING, INC.**  
ARCHITECTURE - ENGINEERING - LAND PLANNING

**SPRING ENGINEERING, INC.**  
ARCHITECTURE  
ENGINEERING  
LAND PLANNING  
Tel: (727) 838-1518  
Fax: (727) 842-4178  
kspring@springeng.com  
1988 - 2017  
**29**  
Years of Excellence

**RECEIVED**  
**MAY 02 2017**  
DEVELOPMENT DEPARTMENT  
CITY OF NEW PORT RICHEY

Approved by DRC 4-27-17

**Volkswagen**  
Of New Port Richey  
INVENTORY STORAGE LOT  
4727 US Hwy 19  
New Port Richey, Florida 34652

