



# NEW PORT RICHEY POLICE DEPARTMENT

---

Chief Kim Bogart

---

## MEMORANDUM

TO: Debbie Manns, City Manager

FROM: Kim Bogart, Chief of Police

DATE: June 12, 2017

SUBJECT: New Port Richey Intersection Safety Program Evaluation

---

This memorandum addresses key points of consideration when evaluating the effectiveness and potential continuation of the New Port Richey Intersection Safety Program. The charts, graphs and comments that follow will show traffic crashes are increasing at a steady rate throughout the City and there are challenges ahead regarding reducing the number of crashes.

It is important to be mindful that recent studies have shown turning off red light cameras has associated costs in terms of lost lives, injuries and property damage. In a recent study, the Insurance Institute for Highway Safety Highway Loss Data Institute (IIHS), which is an independent, nonprofit scientific and educational organization, reported “. . . cities that turned off red light cameras [experienced] 30 percent more fatal red light running crashes per capita and 16 percent more fatal crashes of all types per capita at signalized intersections.” This study focused specifically on examining the effects of ending camera programs. (IIHS News, July 28, 2016)

It is also important to recognize that it is difficult and dangerous to stop a red light runner on a busy highway such as US 19. (*The Annual Average Daily Traffic count for US 19 at Main Street in 2016 was 54,500 vehicles*). “In order to stop a red light runner, officers usually have to follow the vehicle through the red light, endangering themselves as well as other motorists and pedestrians. (IIHS News, February 1, 2011).

When compared to 99 Florida cities having populations between 15,000 – 74,999, the City of New Port Richey ranks in the highest 25 percent in nine categories based on total actual serious injuries and fatalities during 2011 – 2015. This is according to the Florida Department of Transportation in its FY2018 Highway Safety Matrix – Ranking of Florida Cities. Of the nine categories, New Port Richey ranks 4<sup>th</sup> highest with drivers 65+; 9<sup>th</sup> highest with teen drivers; 11<sup>th</sup> highest in serious injuries or fatalities, and in pedestrian or bicycle related crashes; and 12<sup>th</sup> highest in motorcycle related crashes. The matrix, which follows in its entirety, shows the overall rankings of all 100 cities:



## FY2018 Highway Safety Matrix - Ranking of Florida Cities



(Based on total actual serious injuries and fatalities during 2011 - 2015)

Group II - Population of 15,000-74,999 - 99 Cities

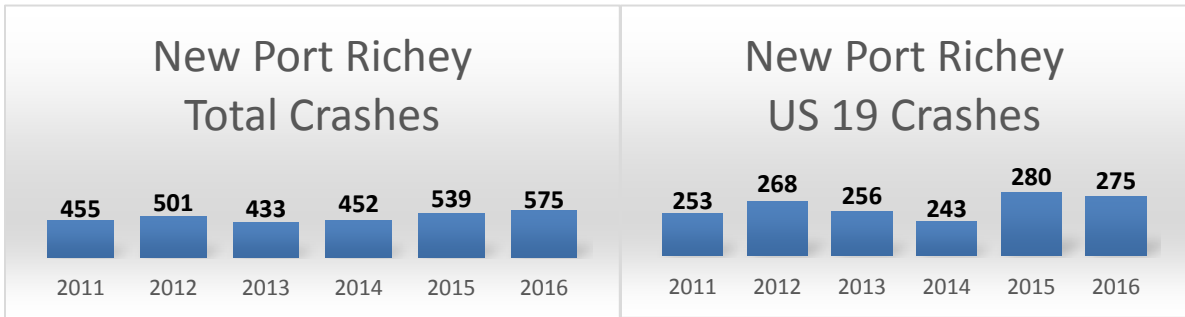
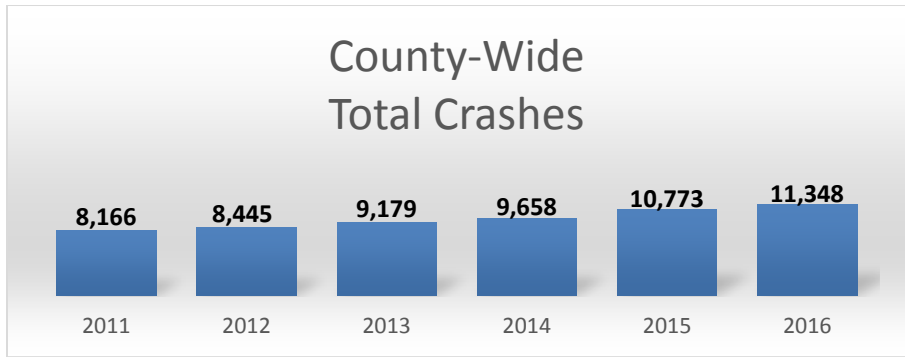
Florida City (Group II)	Serious Injuries or Fatalities	Distracted Driving	Drivers 65+	Impaired Driving	Motorcycle Related	Occupant Protection	Pedestrian or Bicyclist Related	Speed or Aggressive Driving	Teen Drivers	Florida City (Group II)	Serious Injuries or Fatalities	Distracted Driving	Drivers 65+	Impaired Driving	Motorcycle Related	Occupant Protection	Pedestrian or Bicyclist Related	Speed or Aggressive Driving	Teen Drivers
Altamonte Springs	55	64	69	55	64	55	47	92	48	New Smyrna Beach	37	49	38	14	15	23	58	32	42
Apopka	20	16	37	22	26	21	31	35	19	North Lauderdale	79	85	74	94	69	89	53	87	84
Aventura	25	10	17	72	35	51	28	26	55	North Miami	31	48	45	28	36	45	18	59	56
Bartow	85	72	89	95	94	73	86	94	85	North Miami Beach	34	35	51	52	30	26	30	48	30
Belle Glade	91	82	96	91	99	74	71	96	97	North Port	39	31	27	27	53	43	54	49	36
Bonita Springs	61	58	49	30	39	47	68	63	92	Oakland Park	27	47	42	36	27	25	15	17	46
Boynton Beach	24	33	29	25	34	13	22	23	33	Ocala	8	11	6	4	11	2	9	7	3
Bradenton	1	2	1	1	2	1	1	11	1	Ocoee	68	46	76	56	87	29	62	57	52
Casselberry	66	54	72	68	38	78	49	74	88	Opa-Locka	77	77	81	83	90	63	77	65	90
Clermont	41	22	46	38	37	34	46	72	28	Ormond Beach	14	18	11	10	6	15	24	12	12
Cocoa	15	14	21	17	17	28	25	8	14	Oviedo	65	68	71	60	50	75	63	56	51
Coconut Creek	38	38	32	26	43	31	50	27	32	Palm Beach Gardens	23	13	28	18	41	12	35	15	25
Cooper City	80	80	75	86	80	64	80	68	66	Palm Springs	64	59	66	59	52	71	33	31	50
Coral Gables	28	25	26	29	42	36	13	73	37	Palmetto Bay	87	86	88	89	81	77	81	89	74
Crestview	67	57	67	74	78	57	61	47	58	Panama City	9	4	12	9	13	6	14	4	7
Cutler Bay	84	94	98	88	71	85	70	81	80	Parkland	97	99	95	99	98	99	93	70	77
Dania Beach	47	51	60	63	44	41	51	24	68	Pensacola	7	9	10	6	9	5	8	13	8
Daytona Beach	6	8	9	8	3	4	3	2	11	Pinecrest	88	95	84	90	89	82	92	90	89
DeBary	98	74	91	62	92	92	99	76	78	Pinellas Park	4	6	3	5	7	16	6	5	5
DeLand	13	7	18	7	14	7	19	9	16	Plant City	29	65	34	44	25	9	42	29	20
Delray Beach	16	21	13	39	22	10	10	10	29	Port Orange	10	20	5	11	8	38	17	16	10
Doral	70	84	97	69	55	76	69	67	53	Punta Gorda	44	29	25	48	31	17	67	60	59
Dunedin	52	63	39	73	63	54	44	50	43	Riviera Beach	57	45	61	49	77	46	48	39	81
Edgewater	60	53	58	64	68	70	73	51	87	Rockledge	69	61	59	51	60	62	91	40	49
Eustis	72	69	63	46	47	49	75	64	72	Royal Palm Beach	73	70	77	53	70	50	83	58	54
Fort Myers	5	5	7	3	5	3	4	1	6	Safety Harbor	92	96	82	76	91	95	88	77	94
Fort Pierce	51	75	53	45	45	67	37	42	61	Sanford	22	27	47	12	16	14	16	14	17
Fort Walton Beach	56	52	54	35	54	56	45	45	57	Sarasota	3	3	2	2	4	8	2	3	4
Greenacres	49	34	64	34	67	33	41	6	47	Sebastian	76	92	56	78	65	72	78	93	69
Haines City	58	37	44	77	86	60	74	82	71	Seminole	43	41	31	41	18	86	59	28	34
Hallandale Beach	48	56	55	66	66	61	29	62	79	St Cloud	86	81	79	75	74	94	87	83	96
Hialeah Gardens	90	87	99	96	82	90	95	98	75	Stuart	53	66	43	54	51	68	43	36	64
Homestead	17	36	30	58	23	11	12	46	26	Sunny Isles Beach	89	79	85	84	95	79	66	95	93
Jacksonville Beach	50	32	65	42	49	65	39	38	35	Swe etwater	94	91	93	92	75	97	94	99	86
Jupiter	18	15	20	20	32	19	20	20	22	Tamarac	45	55	40	65	48	37	38	61	60
Key West	12	19	22	19	1	20	7	19	18	Tarpon Springs	19	17	16	21	21	35	32	43	15
Kissimmee	2	1	8	13	10	30	5	21	2	Tavares	82	89	62	87	61	84	84	80	67
Lake Mary	78	71	87	47	58	58	85	66	73	Temple Terrace	74	78	73	61	79	87	76	52	63
Lake Wales	63	83	50	67	72	48	82	34	65	Titusville	40	39	33	37	24	32	56	37	27
Lake Worth	32	43	48	24	33	40	21	22	41	Venice	26	30	15	32	19	39	36	97	45
Lauderdale Lakes	81	93	83	79	93	93	55	79	91	Vero Beach	62	67	36	50	59	66	60	78	62
Lauderhill	33	62	41	93	56	42	23	44	39	Wellington	54	26	57	43	76	69	64	18	21
Leesburg	42	40	24	40	20	18	40	55	40	West Melbourne	75	60	70	70	73	88	79	75	83
Lynn Haven	96	73	94	98	97	80	98	91	76	Weston	59	76	68	82	40	81	65	30	44
Maitland	95	97	90	85	83	91	96	84	98	Winter Garden	71	50	78	57	84	83	72	86	82
Marco Island	99	98	80	97	85	98	90	85	99	Winter Haven	46	44	35	81	57	44	57	33	13
Margate	21	24	23	71	62	22	27	53	24	Winter Park	36	12	52	33	29	59	26	71	23
Miami Lakes	83	90	92	80	88	53	97	88	70	Winter Springs	93	88	86	31	96	96	89	69	95
Naples	35	28	19	15	46	27	34	54	31	Zephyrhills	30	42	14	23	28	52	52	41	38
New Port Richey	11	23	4	16	12	24	11	25	9										

**Legend**  
 Highest 25% in a category.

The following table shows crashes have increased county-wide at a steady rate, but much more dramatically city-wide. Relative to the red light camera program, it is important to note, the crashes on New Port Richey US 19 remained nearly constant compared to the city-wide rate. This is a potential indicator that motorists are aware they are on camera and drive more responsibly.

Table 1

YEAR	New Port Richey Total Crashes	Total Injuries	Fatalities	New Port Richey US 19 Crashes	County-Wide Total Crashes
2011	455	119	3	253	8,166
2012	501	173	1	268	8,445
2013	433	106	0	256	9,179
2014	452	154	3	243	9,658
2015	539	199	4	280	10,773
2016	575	223	8	275	11,348

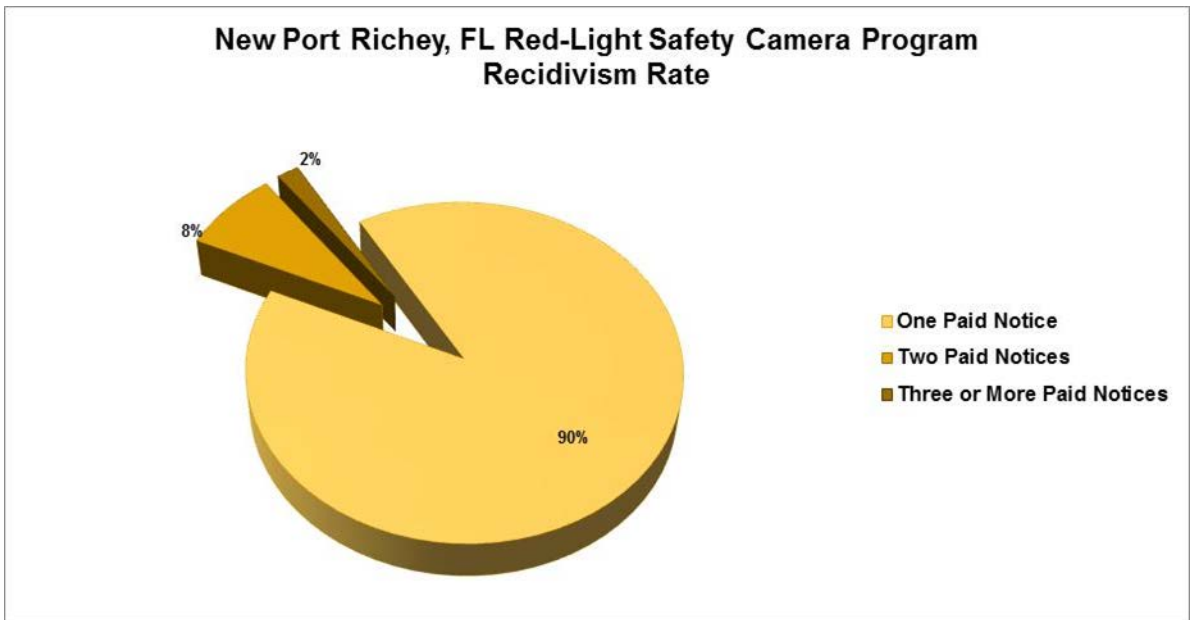


Source for Pasco County Crash Data: Florida's Integrated Report Exchange System (FIRES)

Source for City of New Port Richey Crash Data: New Port Richey Police Department Records

The recidivism (repeat violator) rate is another element to consider when evaluating the effectiveness of the City's Red Light Camera System (RLCS). The data that follows in Table 2 shows that most red light runners in New Port Richey do not get a second ticket. This rate reported for the entire six years the program has been in place has remained constant at 10 percent. That means 90 percent of all violators who receive a ticket and pay it do not violate again. Additionally, the recidivism rate of motorists that have New Port Richey zip code addresses is only 15.7 percent. These low rates in both categories indicates a positive change in driver behavior to stop on red.

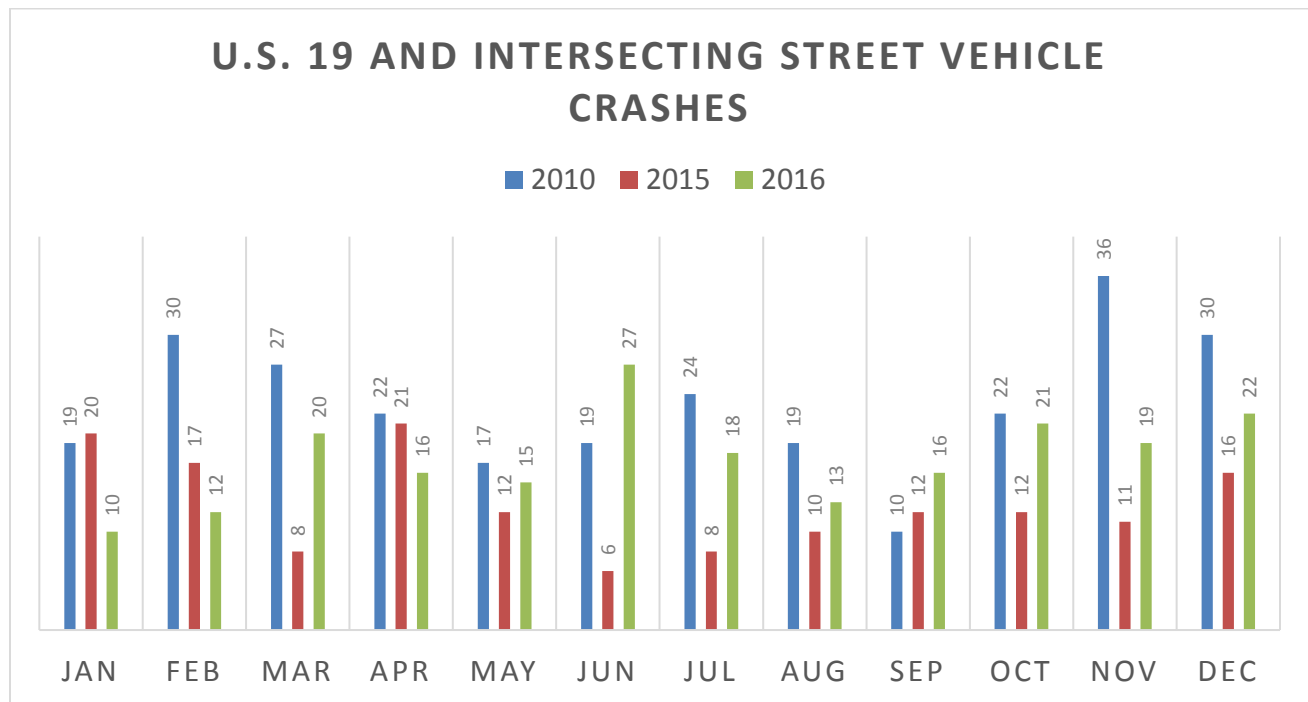
Table 2



Graphic supplied by American Traffic Solutions:

The next two tables show comparisons of US 19 and intersecting street crashes to total crashes. To minimize confusion, 2010 is used as a benchmark due to road construction on U.S. 19 had not begun and red light cameras had not been installed. Vehicle crash data from 2010 is compared with that from 2015 and 2016, which was after completion of the U.S. 19 construction project. Table 3 compares the number of vehicle crashes that occurred on U.S. 19 and intersecting streets. It shows crashes were significantly less in 2015 than in 2010 and, although the number of crashes rose in 2016, the increase was still less than the number of crashes in 2010.

Table 3



2010 Data Source: New Port Richey Police Department Records

2015 and 2016 Data Source: Florida's Integrated Report Exchange System (FIRES)

Table 4 shows 521 motor vehicle crashes occurred within the City limits during 2010 with 275 (53 percent) of those crashes taking place along U.S. 19 and intersecting streets. In 2015, the total number of crashes in the City was 539, but the proportion of crashes on U.S. 19 and intersecting streets significantly reduced to 153 (28 percent). For 2016, the number of crashes in the City was 575 with 209 (36 percent) of the crashes along U.S. 19 and intersecting streets.

Table 4

	<u>2010</u>	<u>2015</u>	<u>2016</u>
<b>Total Crashes</b>	521	539	575
<b>U.S. 19 &amp; Intersecting Street Crashes</b>	275	153	209

**53%      28%      36%**      **Percentage of total crashes**

When reviewing Table 5, which shows the number of Notices of Violations issued over time, it is important to note that effective December 31, 2013, the Florida Department of Transportation increased the perception/reaction time (PRT) value to 1.4 seconds in their formula for calculating the duration of amber times for all existing traffic infraction devices in Florida. These adjustments significantly increased the time for drivers to perceive the traffic signal change from green to yellow and to react. This change initially reduced the number of infractions; however, the average monthly number of violations has remained high for some intersections:

Table 5

MONTH	NPR01 NB 19 @ Trbl. Crk Rd.	NPR02 NB 19 @ Flormr Terr.	NPR04 SB 19 @ Marine Pkywy.	NPR05 NB 19 @ Gulf Dr.	NPR06 SB 19 @ Gulf Dr.	NPR07 NB 19 @ Crs. Bayou Bvd.	NPR08 SB 19 @ Main St.	NPR09 WB Main St. @ 19	NPR10 SB 19 @ Crs. Bayou Bvd.
Jun-11			390	393	482	430	241		
Jul-11			444	408	450	336	258		
Aug-11			475	521	431	411	286		
Sep-11			409	410	404	376	264		
Oct-11			351	377	332	322	190		
Nov-11			200	273	261	203	129		
Dec-11			309	272	306	282	152		
Jan-12			274	224	295	268	159		
Feb-12			161	278	300	304	153		
Mar-12			165	448	382	436	206		
Apr-12			139	425	363	322	175		
May-12			175	410	314	363	189	206	265
Jun-12			134	359	269	313	186	127	273
Jul-12			123	281	239	317	156	98	238
Aug-12			122	322	240	318	164	85	212
Sep-12			94	257	245	240	129	59	177
Oct-12			83	219	188	205	93	78	126
Nov-12	60	57	61	199	190	172	80	61	125
Dec-12	154	105	74	207	174	174	96	73	131
Jan-13	177	109	60	172	158	150	89	59	117
Feb-13	221	113	56	201	162	203	91	61	113
Mar-13	132	91	69	408	265	345	176	125	161
Apr-13	Out of Service	51	52	408	317	306	166	100	185
May-13		48	47	375	264	327	165	95	191
Jun-13		37	38	396	329	295	167	54	230
Jul-13		41	28	349	287	275	126	50	222
Aug-13		32	37	224	244	292	119	59	226
Sep-13		35	39	129	91	138	39	27	89
Oct-13		58	39	28	2	35	9	38	5
Nov-13		209	194	75	206	92	339	128	75

Dec-13	83	70	20	95	98	148	55	52	78
Jan-14	107	60	18	80	74	85	34	34	54
Feb-14	116	51	14	85	82	67	52	19	37
Mar-14	138	64	10	111	105	101	57	21	55
Apr-14	161	54	30	85	91	113	51	120	72
May-14	190	97	33	85	111	159	42	532	122
<b>Jun-14</b>	<b>184</b>	78	40	122	109	137	18	311	111
<b>Jul-14</b>	<b>198</b>	89	45	133	135	86	20	295	76
Aug-14	200	69	39	125	99	58	17	277	63
Sep-14	135	12	27	110	111	55	10	178	65
Oct-14	142	23	42	128	108	71	15	274	73
Nov-14	118	22	30	136	106	69	14	130	44
Dec-14	121	22	51	126	100	76	10	Out of Service	66
Jan-15	89	25	51	119	115	67	13		46
Feb-15	97	18	39	100	104	77	18		52
Mar-15	123	29	39	134	114	90	20		78
Apr-15	294	26	46	110	118	102	22		73
May-15	421	69	74	146	134	95	24	174	101
Jun-15	420	140	159	124	177	164	31	826	80
Jul-15	452	264	107	191	213	200	33	475	47
Aug-15	466	234	166	243	231	171	34	839	Out of Service
Sep-15	437	196	127	212	191	187	34	579	
Oct-15	430	165	139	206	166	161	18	502	
Nov-15	417	182	132	202	185	153	24	461	
Dec-15	399	155	130	221	195	134	23	426	
Jan-16	365	143	128	161	177	116	18	209	
Feb-16	328	138	135	195	167	125	19	349	
Mar-16	410	198	153	212	201	150	30	323	
Apr-16	440	196	144	216	185	151	23	391	
May-16	459	194	150	223	187	142	17	292	
Jun-16	459	164	187	187	206	130	27	305	
Jul-16	467	20	9	83	224	Out of Service	Out of Service	230	
Aug-16	458	163	Out of Service	263	218			328	
Sep-16	234	209		244	181			322	
Oct-16	422	190		219	184			260	
Nov-16	356	198		175	192	127			
Dec-16	292	174	171	192	89				
Jan-17	352	159	215	173	44				
Feb-17	309	157	208	167	57				
Mar-17	371	204	248	221	66				
Apr-17	368	176	213	205	66				

As an ancillary benefit, American Traffic Solutions has routinely provided the New Port Richey Police Department with video recordings upon request. Over the last six years, the Department has requested video recordings 180 times to assist with investigations of homicides, shootings robberies, burglaries, car-jackings, and hit and run vehicle crashes.

In the proposed renewal agreement, American Traffic Solutions (ATS) will continue to honor a \$4,250 fee per camera for an additional two year term. In addition, at the City's request, ATS will contribute \$3,000 per each additional year of the Term of the Agreement towards the City's Traffic Safety Awareness Campaign to further the City's goal of Enhancing traffic safety and reducing dangerous driving.

Based on the fact that so many violations continue to occur, I recommend Council consider keeping the five remaining cameras at this time.