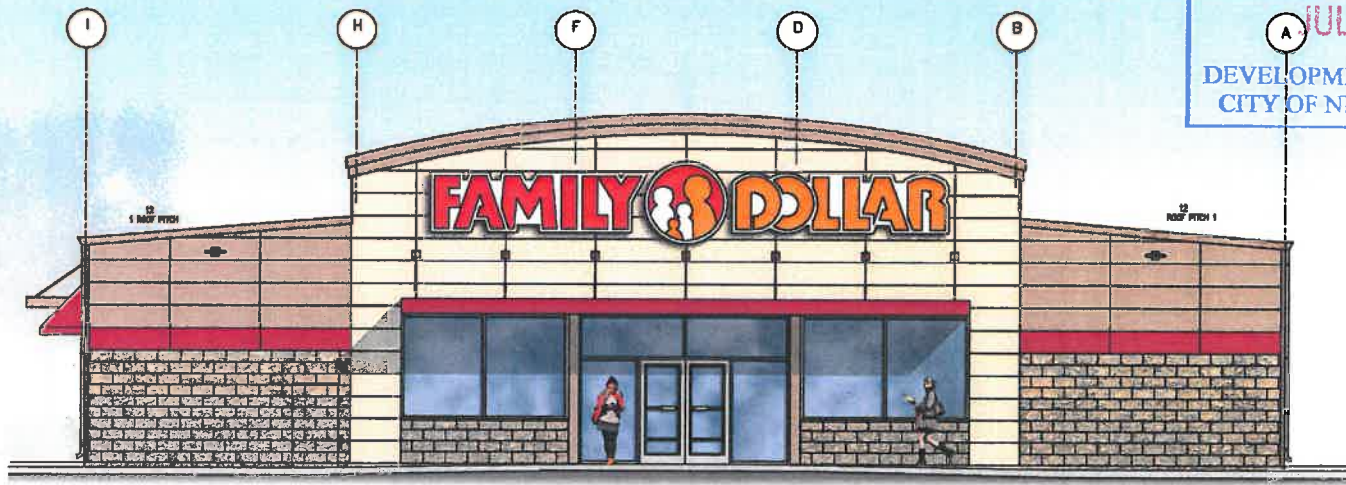
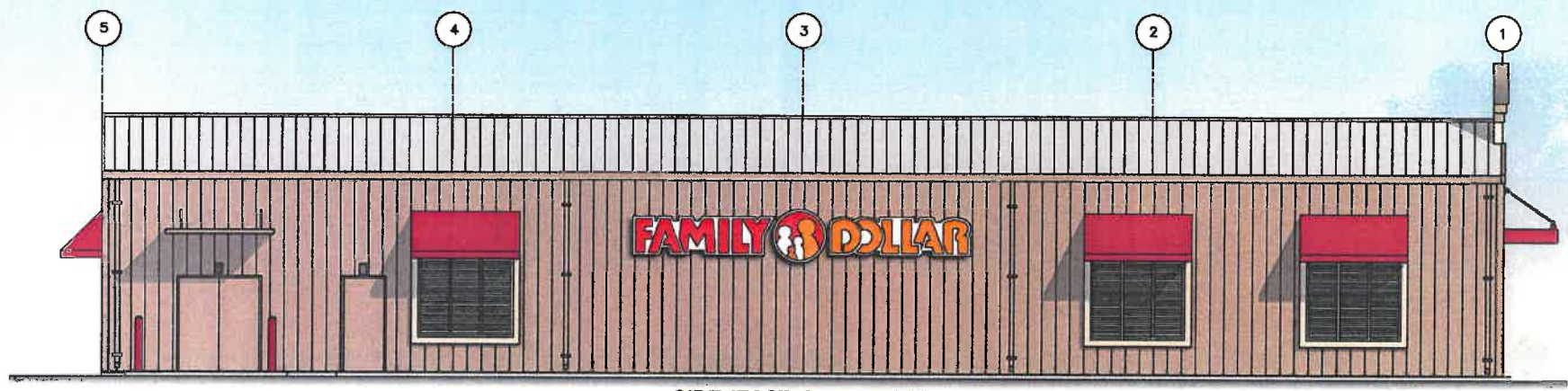







RECEIVED
 JUL 13 2017
 DEVELOPMENT DEPARTMENT
 CITY OF NEW PORT RICHEY



FRONT (NORTH) ELEVATION



SIDE (EAST) ELEVATION

- | | | | | | | |
|---|---|---|--|---|---|---|
|  |  |  |  |  |  |  |
| NICHIHA
Fiber Cement Panels
Tuscan | NUCOR
Siding, Trim, D.S.
Sagebrush Tan | NICHIHA
Fiber Cement Panels
Light Sand | BENJAMIN MOORE
Accent Panels, Louvers
Light Sand | NICHIHA
Fiber Cement Panels
Safety Red | Metal Roof
Standing Seam
Galvalume Silver | NICHIHA
Fiber Cement Panels
Cinder Block - Brown |



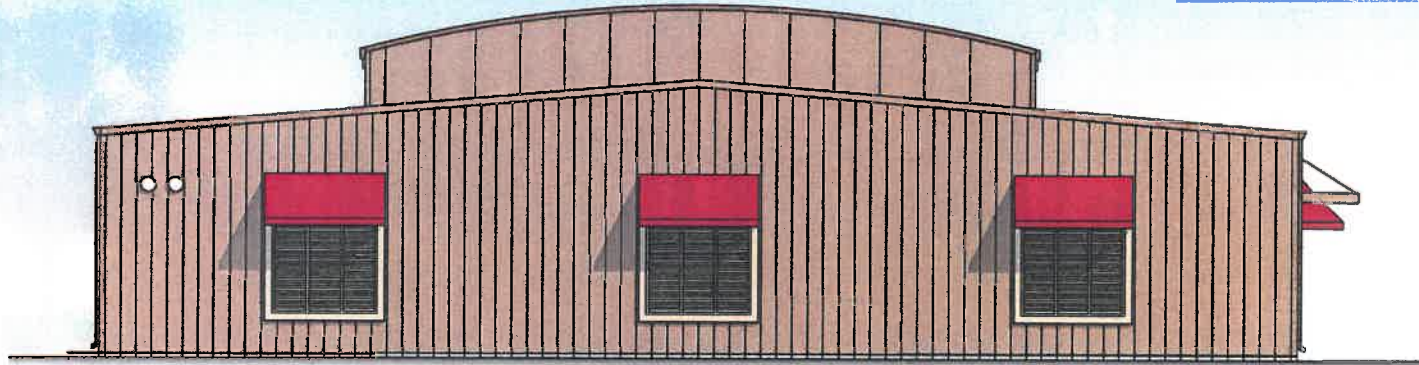
Store # 715423
 2425 Grand Blvd, New Port Richey, FL

LIS, LLC AA26002040
 07.10.2017
 PROJECT NO. 2017.078

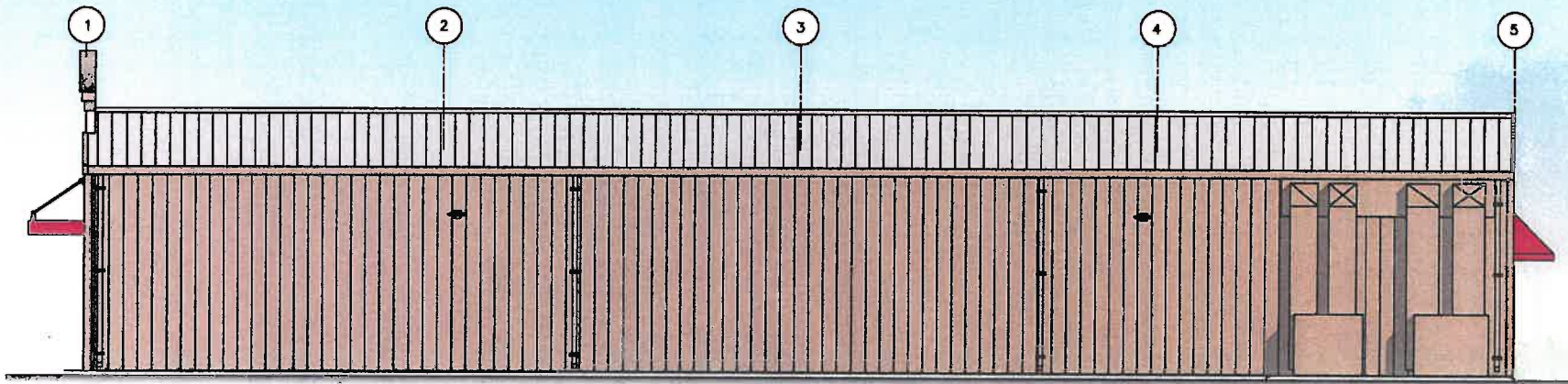
RECEIVED

JUL 13 2017

DEVELOPMENT DEPARTMENT
CITY OF NEW PORT RICHEY



REAR (SOUTH) ELEVATION



SIDE (WEST) ELEVATION



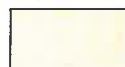
NICHIHA
Fiber Cement Panels
Tuscan



NUCOR
Siding, Trim, D.S.
Sagebrush Tan



NICHIHA
Fiber Cement Panels
Light Sand



BENJAMIN MOORE
Accent Panels, Louvers
Light Sand



NICHIHA
Fiber Cement Panels
Safety Red



Metal Roof
Standing Seam
Galviume Silver



NICHIHA
Fiber Cement Panels
Cinder Block - Brown

FAMILY DOLLAR
my family. my specialty dollar.

Store # 715423
2425 Grand Blvd, New Port Richey, FL

LIS, LLC AA26002040
07.10.2017
PROJECT NO. 2017 078