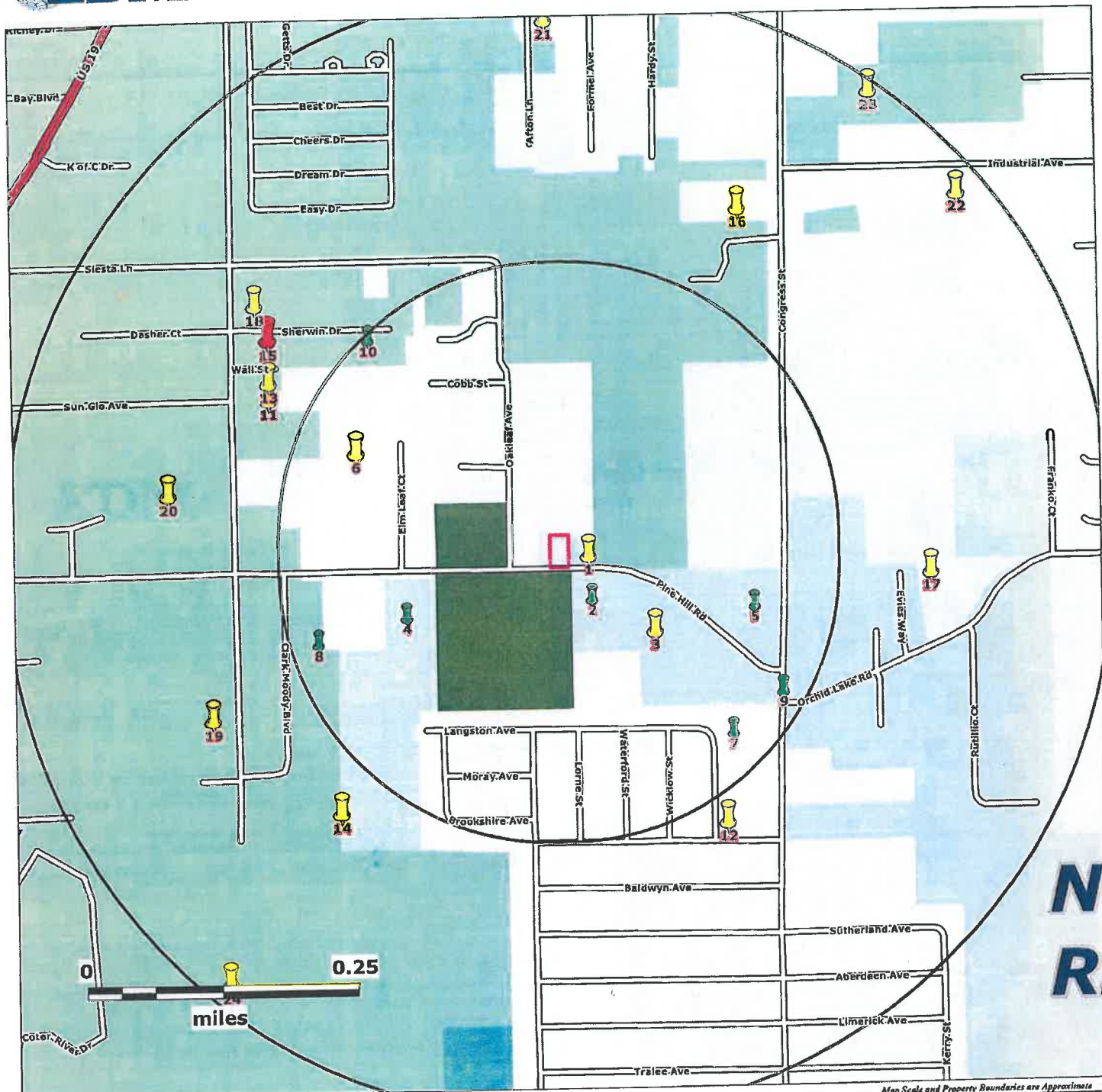




Standard ASTM Research Report Street Map







Source: US Census Bureau TIGER Files

Map Scale and Property Boundaries are Approximate

Subject Property

Parcels 28-25-16-0010-05800-0140
and 28-25-16-0010-05800-0160
Pasco County, Florida

EDM Job No: 23910
June 7, 2017

-  Approximate Site Boundary
-  NPL, STNPL, CORRACTS & TSD sites - 1 Mile Radius
-  CERCLIS, SEMSACTV, NFRAP, SEMSARCH, STCERC, SLDWST, LUST, BRWNFLDS, VOLCLNUP & DRY sites - 1/2 Mile Radius
-  ERNS, NONTSD, TANKS & INSTENG sites - 1/4 Mile Radius