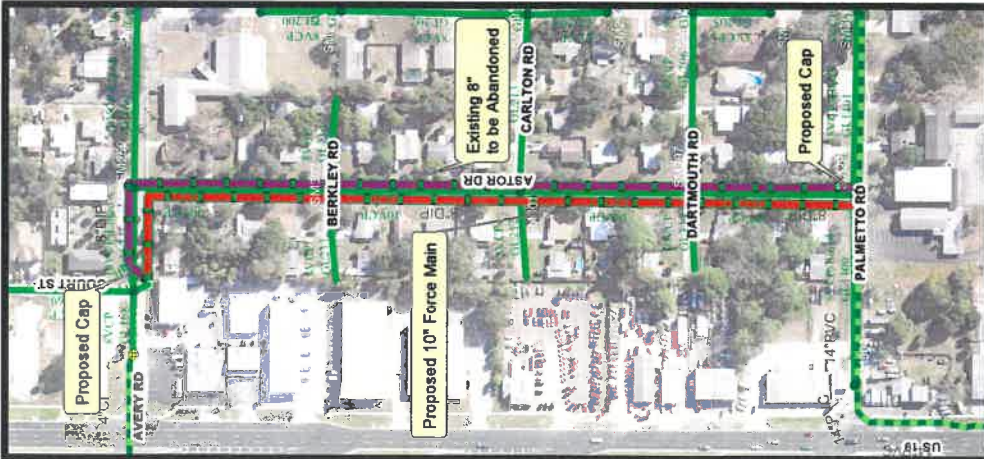
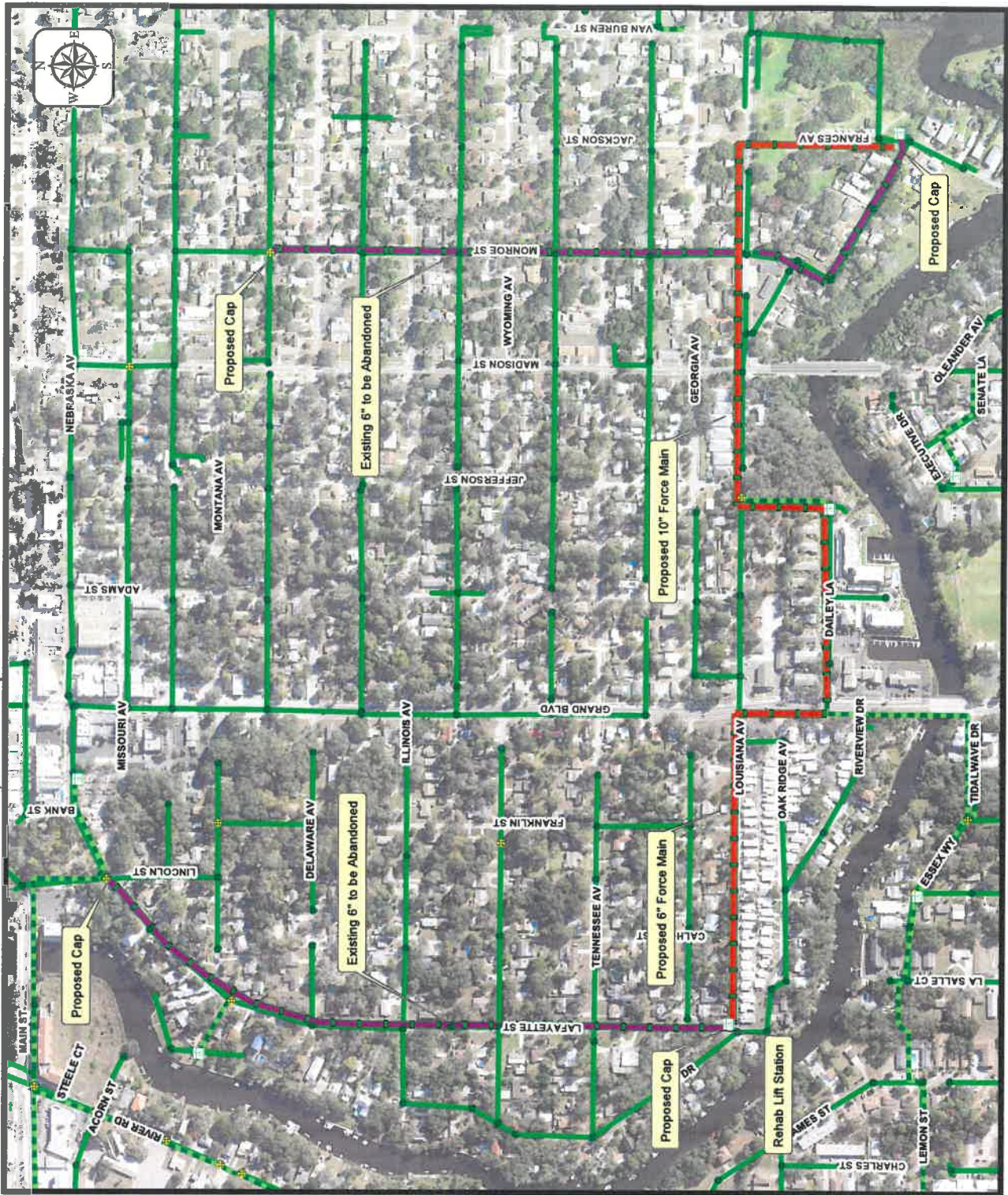







2018-2019 Sewer System Improvements



Legend

-  Lift Stations
-  Proposed Sewer Force Main
-  Proposed Abandonment Sewer Force Main
-  Existing Sewer Force Mains
-  Gravity Sewer



Proposed 2,100' 10" Force Main & 1,000' of 6" Force Main from Grand Blvd. and Daily Ln. north through easement to Louisiana Ave. then east to Frances Ave. Lift Station II-D-5.

Abandon 6" Force Main along Oak Ridge Ave. and Monroe St.

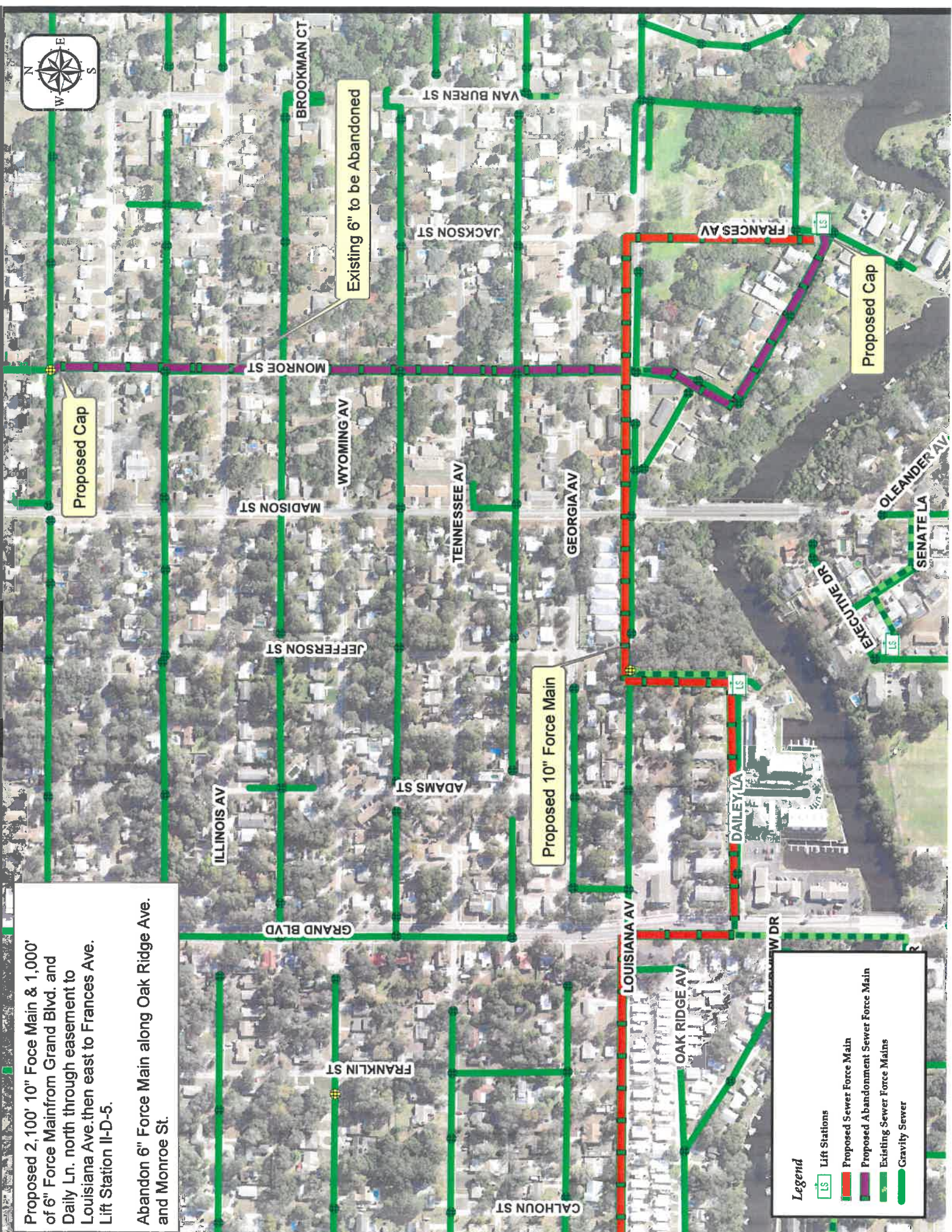
Existing 6" to be Abandoned

Proposed Cap

Proposed 10" Force Main

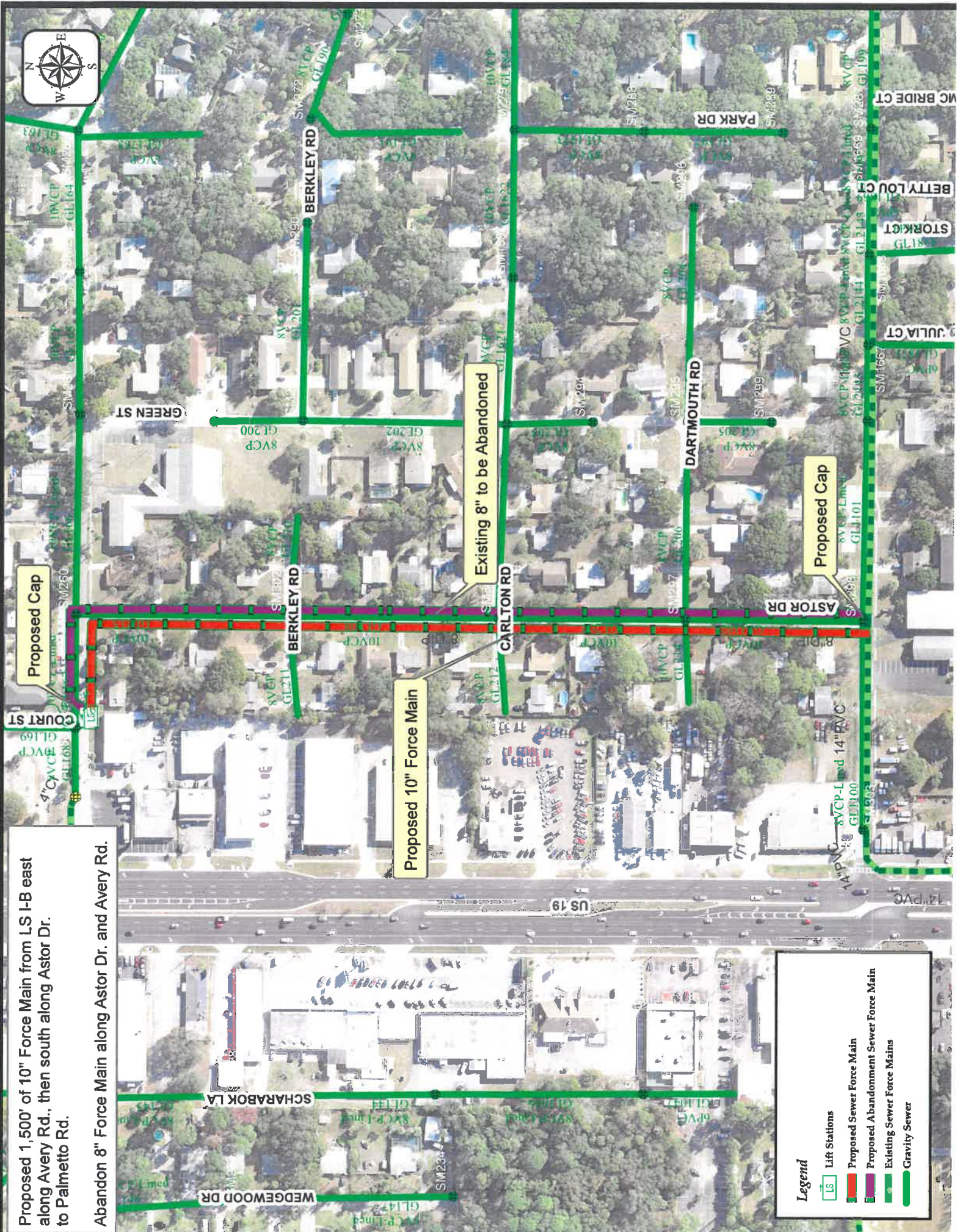
Legend

- Lift Stations
- Proposed Sewer Force Main
- Proposed Abandonment Sewer Force Main
- Existing Sewer Force Mains
- Gravity Sewer



Proposed 1,500' of 10" Force Main from LS I-B east along Avery Rd., then south along Astor Dr. to Palmetto Rd.

Abandon 8" Force Main along Astor Dr. and Avery Rd.



Existing 8" to be Abandoned

Proposed 10" Force Main

Proposed Cap

Legend

- LS Lift Stations
- Proposed Sewer Force Main
- Proposed Abandonment Sewer Force Main
- Existing Sewer Force Mains
- Gravity Sewer