



**PROPOSED CLEARING AREA
(FROM THE ELECTRICAL
ACCESS VAULT TO THE
HEADWORKS SEPARATION
WALL)**



**PROPOSED CLEARING AREA
(FROM THE ELECTRICAL
ACCESS VAULT TO THE
HEADWORKS)**

REMOVE EX. 20" 90 DEG. BEND (FL x FL) FROM SOUTH END TANK INFLUENT AND REINSTALL IN THIS LOCATION WITH ROTATION DOWNWARD AT 45 DEG. ANGLE

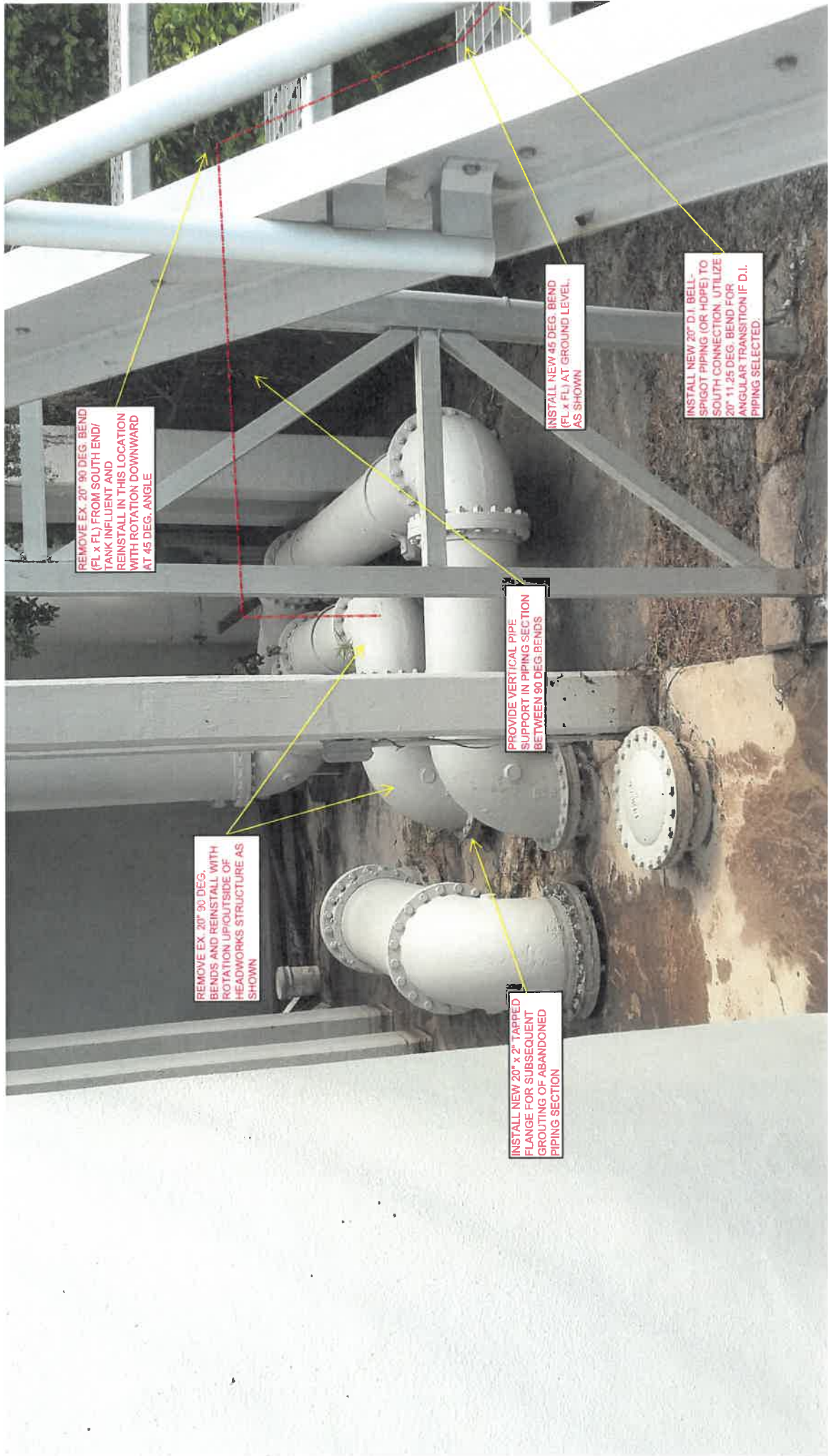
REMOVE EX. 20" 90 DEG. BENDS AND REINSTALL WITH ROTATION UPOUTSIDE OF HEADWORKS STRUCTURE AS SHOWN

PROVIDE VERTICAL PIPE SUPPORT IN PIPING SECTION BETWEEN 90 DEG BENDS

INSTALL NEW 20" x 2" TAPPED FLANGE FOR SUBSEQUENT GROUTING OF ABANDONED PIPING SECTION

INSTALL NEW 45 DEG. BEND (FL x FL) AT GROUND LEVEL, AS SHOWN

INSTALL NEW 20" D.I. BELL-SPIGOT PIPING (OR HOPE) TO SOUTH CONNECTION. UTILIZE 20" 11.25 DEG. BEND FOR ANGULAR TRANSITION IF D.I. PIPING SELECTED.





INSTALL NEW 20" D.I. BELL-SPIGOT PIPING (OR HDPE) TO 90 DEG. BEND. UTILIZE 20" 11.25 DEG. BEND FOR ANGULAR TRANSITION IF D.I. PIPING SELECTED.

CITY STAFF TO REMOVE FENCING AND CLEAR INVASIVE VEGETATION PRIOR TO PIPING INSTALLATION ACTIVITIES.

INSTALL NEW 20" D.I. BELL-SPIGOT PIPING (OR HDPE) TO HEADWORKS CONNECTION UTILIZE 20" 11.25 DEG. BEND FOR ANGULAR TRANSITION IF D.I. PIPING SELECTED.



* CITY STAFF TO REMOVE FENCING AND CLEAR INVASIVE VEGETATION PRIOR TO PIPING INSTALLATION ACTIVITIES.

INSTALL NEW 20" D.I. BELL-SPIGOT PIPING (OR HDPE) TO HEADWORKS CONNECTION. UTILIZE 20" 11.25 DEG. BEND FOR ANGULAR TRANSITION IF D.I. PIPING SELECTED.

INSTALL NEW 20" D.I. BELL-SPIGOT PIPING ACROSS DRIVEWAY (RESTRAINED)

INSTALL NEW 90 DEG BEND (M/J X M/J) AS SHOWN, RESTRAINED



REMOVE EX. PIPING SECTION
AND INSTALL NEW 20" PLUG
VALVE (FL x FL)

REMOVE EX. 20" 90 DEG. BEND
AND INSTALL NEW 45 DEG.
BEND (FL x FL) AS SHOWN

INSTALL NEW 20" D.I. BELL-
SPIGOT PIPING ACROSS
DRIVEWAY (RESTRAINED)