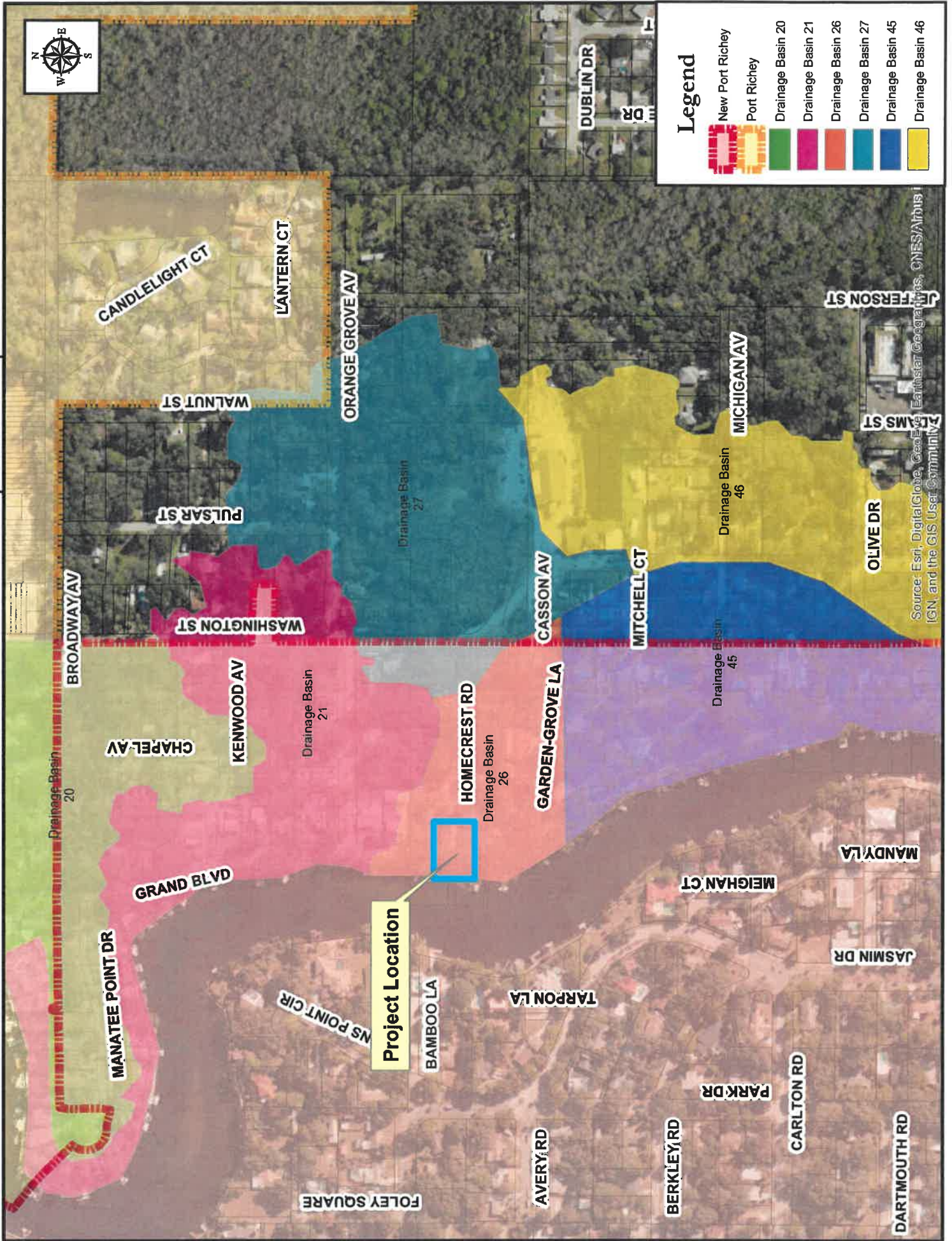


2019 Grand Blvd Stormwater Project Site Map



2019 Grand Blvd Stormwater System Improvements



Remove existing 18" RCP & replace with 64' of 38"x60" ERCP

Remove existing north-south headwall
Construct 38"x60" Elliptical Mitered End Section
Construct 26 SY ditch with rip rap

Remove & replace inlet

Remove existing 18"x24" ERCP & replace with 40' of 38"x60" ERCP

Remove existing retaining wall
Construct 38"x60" Elliptical Mitered End Section
Construct 116 SY ditch with rip rap

Remove 8' of existing 8" VCP sanitary sewer gravity line and replace with 8" PVC

Legend

-  Stormwater Pipe
-  Gravity Sewer Line
-  Stormwater Inlet
-  Elliptical Mitered End Section

Source: Esri, DigitalGlobe, GeoEye, Earthstar Geographics, CNES/Airbus DS, USDA, USGS, AeroGRID, IGN, and the GIS User Community