
PUBLIC WORKS - SUPERVISION

IT IS THE MISSION OF PUBLIC WORKS – SUPERVISION TO

provide responsive, professional, and courteous services to the Public.

DESCRIPTION

The Public Works Department provides design, construction and maintenance of right-of-ways, maintenance of parks, city properties and parking structures. The Department includes several divisions, which are overseen by Public Works – Supervision. Work is completed by city staff, as well as consultants, contractors and developers.

ACCOMPLISHMENTS OF FY20

- Utility System Expansion/Operational Improvements:
 - Conducted system water loss audit
 - Completed Bulk Water & Wastewater Rate Analysis
 - Created and executed an addendum to the existing Inter-local Agreement between the City and Pasco County
- Program Review and Implementation:
 - Implemented Alley Management Program
 - Reviewed and updated existing Yard Debris Ordinance
 - Entered into an Inter-local Agreement with the Highway Maintenance Organization and a private maintenance contractor
- Department Sustainability:
 - Completed a Water and Sewer Sufficiency Analysis
 - Created and executed an addendum to the Bulk Water and Wastewater Agreements between the City and the City of Port Richey

FY21 INITIATIVES

- Complete the following analyses:
 - Water Loss
 - Wastewater System Modeling Master Plan
 - Utility Revenue Sufficiency
- Complete training in the following areas:
 - Arborist certification
 - Federal and State certifications
- Update the following Inter-local Agreements:
 - Waste & Wastewater Bulk Agreements with the City of Port Richey
 - Waste & Wastewater Bulk Agreements with Pasco County
 - Grand Blvd. Bridge (Pasco County)



Authorized Personnel – Full-time Equivalent			
Position/Title	FY18-19	FY19-20	FY20-21
Public Works Director	1	1	1
Assistant Public Works Director	1	1	1
Administrative Office Manager	1	1	1
Data Support/GIS Mapping Technician	1	1	1
Total	4	4	4

PUBLIC WORKS SUPERVISION

001101					AMENDED	BUDGET
EXP		ACTUAL	ACTUAL	ESTIMATE	BUDGET	AMOUNT
CODE	CLASSIFICATION	FY17-18	FY18-19	FY19-20	FY19-20	FY20-21
41111	Dept Head Salaries	89,740	93,322	94,160	94,160	95,220
41112	Division Head Salaries	53,990	55,058	55,060	55,060	59,680
41299	Regular Full-Time Wages	75,112	73,147	77,000	77,000	78,940
41411	Overtime Wages	127	504	1,110	1,110	1,140
41522	Education Incentive Pay	1,150	1,200	1,200	1,200	1,200
42111	Social Security Matching	16,239	16,411	17,300	17,300	17,820
42211	Florida Retirement System	31,564	33,104	33,430	33,430	35,760
42311	Health Insurance	33,699	33,519	33,230	33,230	34,840
42312	Life Insurance	89	75	230	230	240
42313	Accidental Death & Disab Insurance	11	10	90	90	120
42426	Workers Comp - Clerical (8810)	178	163	180	180	210
42432	Workers Comp - Municipal Class (9410)	1,931	9,657	3,610	3,610	4,010
TOTAL PERSONNEL SERVICES		\$ 303,830	\$ 316,170	\$ 316,600	\$ 316,600	\$ 329,180
43499	Contractual Services - Misc	1,353	1,441	750	750	700
44011	Travel & Training	171	225	1,000	3,000	2,000
44121	Telephone - Local	6,307	5,269	6,500	6,500	6,500
44134	Data Lines	9,175	10,022	10,500	10,000	10,500
44141	Pager Services	39	37	40	40	-
44211	Postage	420	433	350	350	350
44311	Electric - City Facilities	30,113	29,927	33,000	33,000	33,000
44351	Water & Sewer - City	14,717	14,432	15,000	15,000	15,000
44373	Street Light Fee	379	616	630	630	630
44381	Stormwater Assessment	1,053	6,026	6,050	6,050	6,050
44571	Notary Bond	-	-	-	150	150
44621	Maintenance & Repairs - Equipment	4,616	6,175	4,400	4,400	4,400
44623	Maintenance & Repairs - Copiers	4,132	2,789	2,000	2,000	2,000
44631	Maintenance & Repairs - Central Garage	720	60	1,300	1,300	1,000
45111	Office Supplies - General	1,442	1,384	2,500	2,500	2,000
45141	Small Tools & Implements	-	-	300	300	300
45211	Fuel	2,031	3,646	2,800	2,800	2,800
45225	Software License Support	1,570	620	3,000	3,500	3,000
45231	Clothing & Apparel	499	523	400	400	400
45243	Computer/Operating Supply	5,232	4,397	2,500	2,500	3,900
45247	First Aid Supplies	376	117	200	200	200
45289	Automotive Parts	897	31	1,500	2,500	1,500
45291	Operating Supplies - Disaster	-	-	1,550	-	500
45299	Operating Supplies - Misc	887	2,549	2,000	2,500	2,000
45411	Dues & Memberships	2,129	1,516	1,800	1,800	1,800
45461	Books & Publications	186	517	300	300	300
TOTAL OPERATING		\$ 88,444	\$ 92,752	\$ 100,370	\$ 102,470	\$ 100,980
46299	Building Improvements	-	2,385	-	-	-
46413	Data Processing Equipment	-	2,414	-	-	-
46431	Special Purpose Equipment	-	17,302	-	-	-
TOTAL CAPITAL		\$ -	\$ 22,101	\$ -	\$ -	\$ -
TOTAL EXPENDITURES		\$ 392,274	\$ 431,023	\$ 416,970	\$ 419,070	\$ 430,160

5-YEAR CAPITAL EQUIPMENT/IMPROVEMENT PROGRAM PUBLIC WORKS SUPERVISION

EXP CODE	CLASSIFICATION	FY 20-21	FY 21-22	FY 22-23	FY 23-24	FY 24-25
46299	<i>Building Improvements</i>					
	HVAC System (R&R)	-	10,000	10,000	10,000	10,000
	Generator (R&R)	-	5,000	5,000	5,000	5,000
	TOTAL	-	15,000	15,000	15,000	15,000
46413	<i>Data Processing Equipment</i>					
	Desktop Computer	-	-	2,600	1,800	-
	TOTAL	-	-	2,600	1,800	-
46418	<i>Software</i>					
	ESRI Online Module	-	-	-	-	15,000
	TOTAL	-	-	-	-	15,000

DIVISION TOTAL \$ - \$ 15,000 \$ 17,600 \$ 16,800 \$ 30,000

PUBLIC WORKS – STREET & RIGHT OF WAY

IT IS THE MISSION OF PUBLIC WORKS – STREET & RIGHT OF WAY TO

repair, maintain, and eliminate hazards to all public streets, right of ways, and alleys making our City a safer place for residents and the general public. The Division also maintains all traffic signs, roadway markings, sidewalks, streetlights and performs the setup of all road closures and detours in association with special events and emergency situations.

DESCRIPTION

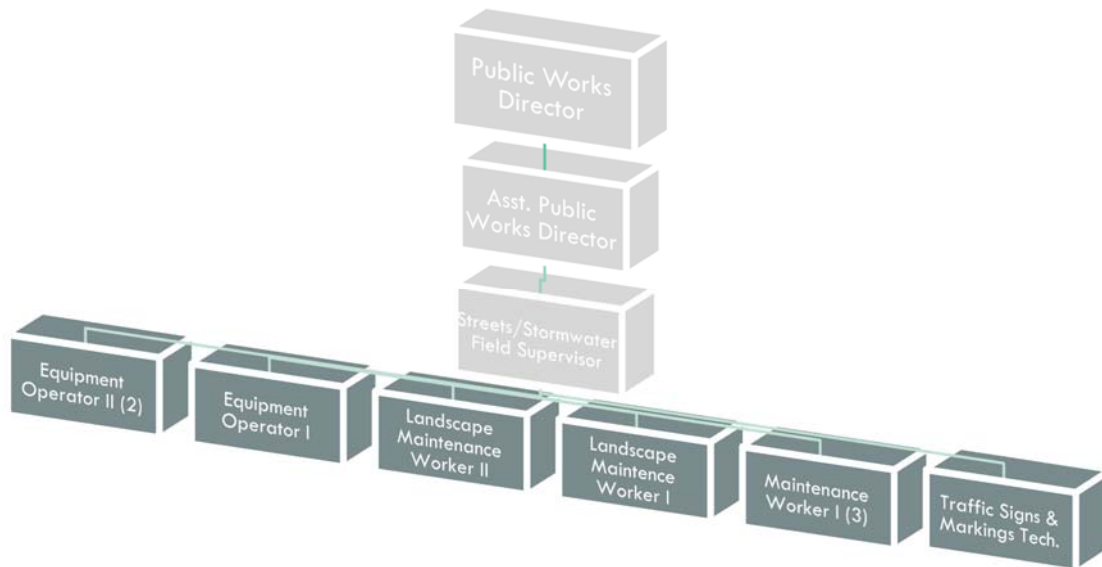
The Street & Right of Way Division is responsible for maintaining 35 miles of roadway marking, 40 acres of mowable land, 65 miles of paved road, and 80 miles of curbing. In addition, this Division also sets up all road closures, detours, and planning for special events.

ACCOMPLISHMENTS OF FY20

- Traffic Signs & Markings Upgrades:
 - Installed LED crosswalk system on Louisiana Ave. near Gulf Middle School
 - Replaced decorative sign on Madison Street
 - Applied sealant and scheduled regular pressure washing on downtown sidewalks
- Road Program:
 - Maintained all city owned roads, including performing pot hole repair and patch work
 - Started grading and leveling of alleys
 - Completed improvements to the Main St. Bridge
 - Installed solar powered speed feedback signs on Congress Street
- Tree Program:
 - Continued certification for Tree City USA - 30th Year Renewal
 - Trimmed tree branches blocking streetlights, as part of the LED Streetlight Dark Spot Project
 - Trimmed trees and bushes in alleyways for safer vehicle access
- Job Safety:
 - Completed State Stormwater Inspector class
 - Completed training for staff, which covered safety protocols and FEMA requirements

FY21 INITIATIVES

- Traffic Signs and Markings:
 - Continue to proactively inspect and replace stop signs, as needed
 - Continue to upgrade street name blades to meet MUTCD requirements
 - Continue to install decorative signs and sign posts in the downtown overlay area
- Road Program:
 - Continue to implement the City's Paving Management Plan
 - Conduct traffic studies in areas, as requested, and maintain all city right-of-ways
 - Maintain the City's Wayfinding Program
- Tree Program:
 - Continue certification for Tree City USA to renew certification for the 31st year
 - Continue to inspect and clear vision zones, as needed
 - Elevate tree canopies to meet the City's minimum overhead requirements
- Job Safety:
 - Continue staff training that covers safety protocols, policies, and expectations



Authorized Personnel – Full-time Equivalent			
Position/Title	FY18-19	FY19-20	FY20-21
Equipment Operator II	2	2	2
Equipment Operator I	1	1	1
Landscape Maintenance Worker II	1	1	1
Landscape Maintenance Worker I	0	1	1
Maintenance Worker I	3	3	3
Traffic Signs & Markings Technician	1	1	1
Total	8	9	9

STREET & RIGHT OF WAY MAINTENANCE

001102		AMENDED				BUDGET
EXP		ACTUAL	ACTUAL	ESTIMATE	BUDGET	AMOUNT
CODE	CLASSIFICATION	FY17-18	FY18-19	FY19-20	FY19-20	FY20-21
41299	Regular Full-Time Wages	173,750	161,270	180,000	247,310	250,790
41411	Overtime Wages	9,117	9,815	8,000	18,960	10,000
41527	Standby Time	4,041	3,559	4,000	5,620	4,500
41529	Meal Allowance	-	18	-	-	30
42111	Social Security Matching	13,705	12,718	17,500	20,830	21,120
42211	Florida Retirement System	15,830	14,452	20,000	22,460	23,380
42311	Health Insurance	34,407	28,600	40,000	74,770	78,390
42312	Life Insurance	152	104	510	510	540
42313	Accidental Death & Disab Insurance	18	13	210	210	270
42431	Workers Comp - Street Maint/Trash (5509)	16,876	16,132	22,030	22,030	32,460
TOTAL PERSONNEL SERVICES		\$ 267,896	\$246,681	\$ 292,250	\$ 412,700	\$ 421,480
43129	Engineering Services - Misc	-	-	-	4,500	4,500
43430	Parking Lot Maintenance	-	684	1,000	1,000	1,000
43438	Lab Test	-	-	250	250	250
43485	Trash Grinding Service	83,467	11,000	15,000	15,000	15,000
43499	Contractual Services - Misc	30,081	34,560	57,210	57,210	57,210
44011	Travel & Training	1,346	535	2,790	2,790	2,790
44121	Telephone - Local	-	-	1,000	1,000	1,000
44134	Data Lines	281	284	1,000	1,000	1,000
44211	Postage	64	259	50	50	50
44311	Electric - City Facilities	1,330	1,396	1,400	1,400	1,400
44312	Electric - Traffic Lights	3,836	4,207	5,000	5,000	5,000
44321	Eastbury Garden - Street Lights	2,424	2,418	2,500	2,500	2,500
44322	Hillandale - Street Lights	15,919	16,146	17,500	17,500	17,500
44323	Ridgewood - Street Lights	7,609	8,234	8,500	8,500	8,500
44324	Barbara Ann - Street Lights	810	777	900	900	900
44331	Trash Removal	63,599	23,371	15,000	15,000	15,000
44351	Water & Sewer - City	24,886	32,598	35,000	35,000	35,000
44381	Stormwater Assessment	2,346	2,373	2,400	2,400	2,400
44419	Rent - Equipment/Software	2,413	590	1,000	1,000	1,000
44611	Maintenance & Repairs - Bldg & Grounds	7,210	5,868	10,000	10,000	10,000
44621	Maintenance & Repairs - Equipment	41	1,860	-	-	-
44631	Maintenance & Repairs - Central Garage	24,615	13,740	10,000	10,000	10,000
45111	Office Supplies - General	77	182	200	200	200
45141	Small Tools & Implements	2,529	2,009	1,500	1,500	1,500
45211	Fuel	36,470	29,297	30,000	40,000	35,000
45231	Clothing & Apparel	1,908	1,637	2,700	2,700	2,700
45243	Computer/Operating Supply	19	549	500	500	500
45247	First Aid Supplies	43	141	100	100	100
45262	Trees	699	1,066	1,000	1,000	1,000
45289	Automotive Parts	37,295	30,105	30,000	38,000	30,000
45299	Operating Supplies - Misc	13,453	17,638	10,000	10,000	10,000
45321	Signs & Sign Material	17,084	16,298	20,000	25,000	25,000
45341	Sod/Seed	106	2,321	1,600	1,600	1,600
45399	Road Materials - Misc	9,612	10,773	12,500	20,000	20,000
45411	Dues & Memberships	-	-	300	300	300
45461	Books & Publications	89	-	200	200	200
TOTAL OPERATING		\$ 391,661	\$ 272,916	\$ 298,100	\$ 333,100	\$ 320,100

STREET & RIGHT OF WAY MAINTENANCE

001102 EXP CODE	CLASSIFICATION	ACTUAL FY17-18	ACTUAL FY18-19	ESTIMATE FY19-20	AMENDED BUDGET FY19-20	BUDGET AMOUNT FY20-21
46415	Trucks & Trailers	-	-	-	-	160,000
46416	Heavy Equipment	3,900	-	16,492	16,492	85,000
46399	Improvements Other Than Buildings	3,900	-	-	-	-
46431	Special Purpose Equipment	9,961	26,117	-	-	-
TOTAL CAPITAL		\$ 17,761	\$ 26,117	\$ 16,492	\$ 16,492	\$ 85,000

TOTAL EXPENDITURES \$ 677,318 \$ 545,714 \$ 606,842 \$ 762,292 \$ 826,580

5-YEAR CAPITAL EQUIPMENT/IMPROVEMENT PROGRAM STREETS & RIGHT OF WAY MAINTENANCE

EXP CODE	CLASSIFICATION	FY 20-21	FY 21-22	FY 22-23	FY 23-24	FY 24-25
46415	<i>Trucks & Trailers</i>					
	Bucket Truck-#97	160,000	-	-	-	-
	Crack Sealer Machine & Trailer w/ Hoses	-	40,000	-	-	-
	TOTAL	160,000	40,000	-	-	-
46416	<i>Heavy Equipment</i>					
	Pay Loader w/ Root Rake-#8 (R&R)	-	12,500	12,500	12,500	12,500
	Case INT Broom Tractor-#5 (R&R)	-	16,250	1,625	1,625	1,625
	Case Tractor c/s 570XLT-#3 (R&R)	-	5,000	5,000	69,000 (a)	6,900
	New Holland Tractor w/ Clam Shell-#4	85,000	-	-	-	-
	Kubota Tractor-#10 (R&R)	-	3,250	3,250	3,250	3,250
	JD244 Loader w/ Clam Shell-#12 (R&R)	-	8,750	8,750	8,750	8,750
	Ingersol Rand Steam Roller-#67 (R&R)	-	7,000	7,000	7,000	7,000
	TOTAL	85,000	52,750	38,125	102,125	40,025
46431	<i>Special Purpose Equipment</i>					
	Vermeer Stump Grinder	-	1,200	1,200	1,200	1,200
	TOTAL	-	1,200	1,200	1,200	1,200

DIVISION TOTAL \$ 245,000 \$ 93,950 \$ 39,325 \$ 103,325 \$ 41,225

(a) Year of Acquisition (\$10,000 from R&R)

PUBLIC WORKS – FACILITIES MAINTENANCE

IT IS THE MISSION OF PUBLIC WORKS – FACILITIES MAINTENANCE TO

maintain a safe, clean, and attractive environment for both employees and visitors to all facilities under the management of the City.

DESCRIPTION

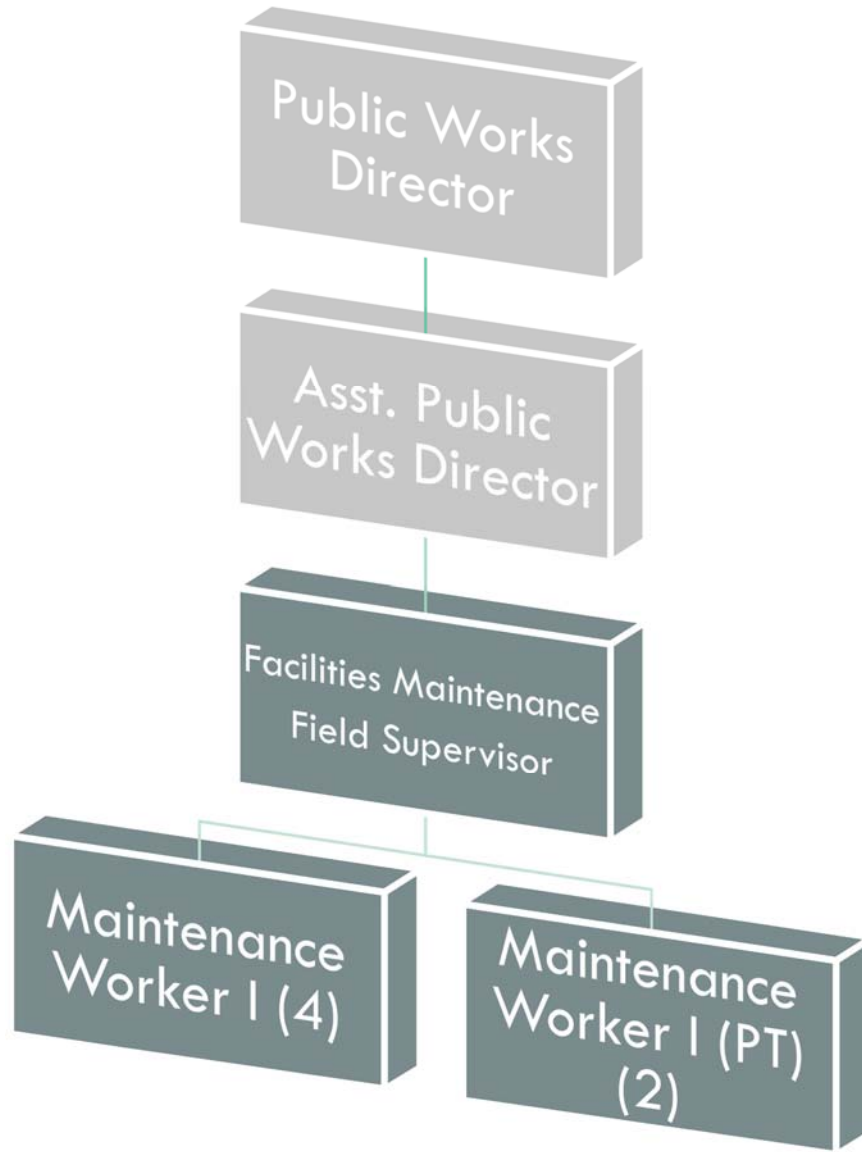
The Public Works – Facilities Maintenance Division is responsible for the maintenance and repair of New Port Richey's public buildings.

ACCOMPLISHMENTS OF FY20

- Facilities Management Program:
 - Created and implemented the City's Facility Maintenance Plan and standard operating procedures for facility inspections, preventative maintenance, and employee safety protocol
- LED Conversion Program:
 - Converted existing exterior lighting at the Water Treatment Plant to LED
 - Worked with FDOT to complete Phase 1 of the US Hwy 19 LED conversion project
 - Installed LED lighting at the overlook structure located at Sims Park
 - Installed solar LED lighting for the City's Wayfinding Monument Sign on Main Street
- Project Completions:
 - Refurbished gym floors at the Recreation Center
 - Assisted Technology Solutions with the installation of security systems along the boardwalks in Sims Park
 - Assisted Grounds Maintenance staff with the installation of a lightning alert system for the splash pad located in Sims Park
- Personnel Efficiency Review:
 - Continued Janitor/Maintenance activity review and function adjustments
 - Identified maintenance activities to be performed in-house

FY21 INITIATIVES

- Recreation and Aquatic Center:
 - Replace state park equipment
 - Complete the ED Conversions of exterior lighting
- Claude Pepper Senior Center:
 - Replace the two small AC units
 - Replace the front roof
- LED Lighting Upgrades:
 - Convert streetlights on US Hwy 19 at intersections
 - Convert exterior lighting located at Nebraska Ave. & Gloria Swanson parking lot
- City Hall:
 - Install new back-up power generator for Information Technology Department
- Recycle Program:
 - Install permanent social distancing markers at all facilities
 - Continue to frequently disinfect high traffic areas at all facilities
 - Update critical inventory list



Authorized Personnel – Full-time Equivalent			
Position/Title	FY18-19	FY19-20	FY20-21
Facilities Maintenance Field Supervisor	1	1	1
Maintenance Worker I	5.46	5.46	5.46
Total	7.46	6.46	6.46

FACILITIES MAINTENANCE

001106					AMENDED	BUDGET
EXP		ACTUAL	ACTUAL	ESTIMATE	BUDGET	AMOUNT
CODE	CLASSIFICATION	FY17-18	FY18-19	FY19-20	FY19-20	FY20-21
41299	Regular Full-Time Wages	93,110	125,190	140,400	140,400	144,350
41311	Part-Time Wages	35,551	30,919	25,000	36,190	37,410
41411	Overtime Wages	3,769	12,151	7,500	22,950	10,000
42111	Social Security Matching	9,542	12,356	13,000	15,290	15,730
42211	Florida Retirement System	10,218	12,623	14,000	16,480	17,420
42311	Health Insurance	17,278	23,345	37,500	41,540	43,550
42312	Life Insurance	80	83	90	400	120
42313	Accidental Death & Disab Insurance	10	11	15	160	180
42427	Workers Comp - Building (NOC) (9015)	5,870	7,148	7,300	8,720	9,370
TOTAL PERSONNEL SERVICES		\$ 175,428	\$ 223,826	\$ 244,805	\$ 282,130	\$ 278,130
43411	Custodial/Janitorial Services	1,081	2,452	2,700	1,500	3,200
43412	Pest Control Services	4,978	5,550	6,000	7,700	7,000
43452	Contractual Plumbing Services	366	-	-	-	-
43453	Contractual Mechanical Services	5,951	-	-	-	-
43454	Contractual HVAC/Air	106,639	125,870	90,000	90,000	110,000
43455	Contractual Fire Monitoring	-	1,130	1,960	1,960	1,960
43474	Security Services	2,040	-	1,000	1,700	1,700
43499	Contractual Services - Misc	63,387	48,170	60,000	60,000	50,000
44011	Travel & Training	917	21	300	300	600
44121	Telephone - Local	2,100	2,169	2,200	2,200	2,300
44134	Data Lines	281	284	400	400	900
44311	Electric - City Facilities	44,220	52,094	52,100	52,100	53,200
44331	Trash Removal	20,114	18,769	20,000	20,000	20,600
44351	Water & Sewer - City	8,903	9,349	9,500	7,490	9,600
44373	Street Light Fee	1,007	1,017	1,020	1,020	1,020
44381	Stormwater Assessment	2,327	2,351	2,400	2,400	2,400
44419	Rent - Equipment/Software	-	92	750	1,000	1,000
44611	Maintenance & Repairs - Bldg & Grounds	34,700	29,042	20,000	40,000	30,000
44631	Maintenance & Repairs - Central Garage	1,800	1,170	1,000	1,000	1,000
44655	Maintenance & Repairs - Senior Center	71	1,050	3,000	4,000	3,000
44983	Permit Fees	-	175	50	50	50
45111	Office Supplies - General	104	263	200	200	200
45141	Small Tools & Implements	2,511	5,084	3,500	3,500	3,500
45211	Fuel	5,329	5,155	5,000	3,000	6,000
45231	Clothing & Apparel	1,932	1,890	2,100	2,100	2,100
45243	Computer/Operating Supply	-	-	1,000	1,000	1,600
45247	First Aid Supplies	317	174	200	300	200
45251	Janitorial Supplies	24,930	30,674	24,000	24,000	30,000
45289	Automotive Parts	1,575	2,292	500	1,000	1,000
45291	Operating Supplies - Disaster	-	-	7,000	-	2,000
45299	Operating Supplies - Misc	6,295	5,228	2,000	1,500	2,000
TOTAL OPERATING		\$ 343,875	\$ 351,515	\$ 319,880	\$ 331,420	\$ 348,130
46399	Imp.Other Than Bldg-Misc	-	18,300	-	-	-
46415	Trucks & Trailers	-	25,405	-	-	-
46431	Special Purpose Equipment	-	3,850	-	-	1,700
TOTAL CAPITAL		\$ -	\$ 47,555	\$ -	\$ -	\$ 1,700

TOTAL EXPENDITURES **\$ 519,303** **\$ 622,896** **\$ 564,685** **\$ 613,550** **\$ 627,960**

5-YEAR CAPITAL EQUIPMENT/IMPROVEMENT PROGRAM FACILITIES MAINTENANCE

EXP CODE	CLASSIFICATION	FY 20-21	FY 21-22	FY 22-23	FY 23-24	FY 24-25
46431	<i>Special Purpose Equipment</i> Core Drill/Concrete Drill	1,700	-	-	-	-
TOTAL		1,700.00	-	-	-	-

DIVISION TOTAL \$ **1,700** \$ - \$ - \$ - \$ -

PUBLIC WORKS – GROUNDS MAINTENANCE

IT IS THE MISSION OF PUBLIC WORKS – GROUNDS MAINTENANCE TO

create memorable recreational and park experiences that enhance the quality of life for residents and visitors of New Port Richey.

DESCRIPTION

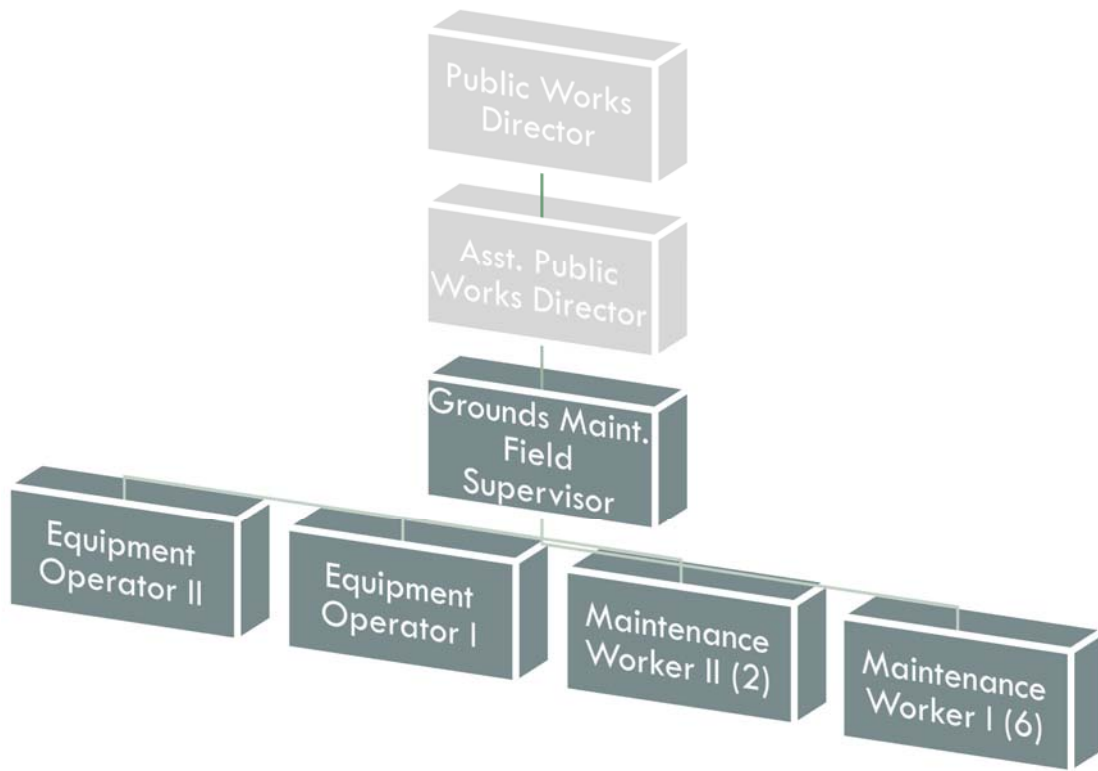
The Public Works – Grounds Maintenance Division performs routine and specialized grounds maintenance for all of the City's parks, preserves, and athletic fields.

ACCOMPLISHMENTS OF FY20

- Maintenance Programs:
 - Replaced dock at the James E. Grey Preserve
 - Removed and repaired kayak launch at Sims Park
 - Repaired railing and installed an ADA ramp at the gazebo located in Sims Park
 - Replaced fencing surrounding the existing detention pond in Grand Blvd. Park
- Park Amenity Improvements:
 - Replaced playground equipment in Sims Park
- Installed lightning alert system for the splash pad in Sims Park
- Assisted Technology Solutions with the installation of security systems along the boardwalks in Sims Park
- Refurbished trails at the James E. Grey Preserve

FY21 INITIATIVES

- Maintenance Programs:
 - Pressure wash playground equipment and sidewalks in city parks
 - Identify pedestrian hazards and perform corrective measure
- Park Amenity Improvements:
 - Re-landscape Sims Park, where needed
 - Replace playground equipment at the Meadows Dog Park
 - Replace aging boardwalk wood slats at the James E. Grey Preserve
- Personnel Training:
 - Fertilizer and Herbicide Application Certification
 - Stormwater Operator Site Inspector Certification
 - FEMA certifications for all employees
 - Train all staff on the proper way for load in and load out for events



Authorized Personnel – Full-time Equivalent			
Position/Title	FY18-19	FY19-20	FY20-21
Grounds Maintenance Field Supervisor	1	1	1
Equipment Operator II	1	1	1
Equipment Operator I	1	1	1
Maintenance Worker II	0	2	2
Maintenance Worker I	6.46	6	6
Total	9.46	11	11

GROUNDS MAINTENANCE

001110		AMENDED				BUDGET
EXP		ACTUAL	ACTUAL	ESTIMATE	BUDGET	AMOUNT
CODE	CLASSIFICATION	FY17-18	FY18-19	FY19-20	FY19-20	FY20-21
41210	Regular Exempt Salaries	25,682	49,820	48,880	48,880	50,110
41299	Regular Full-Time Wages	184,769	137,331	160,000	258,010	266,620
41311	Part-Time Wages	18,647	-	-	-	-
41411	Overtime Wages	12,417	33,879	25,000	21,260	25,000
41511	Employee Incentives	450	-	-	-	-
41527	Standby Time	-	76	74	-	-
41529	Meal Allowance	-	-	-	80	80
42111	Social Security Matching	18,073	16,550	20,000	23,920	25,860
42211	Florida Retirement System	21,317	19,308	25,000	29,750	31,690
42311	Health Insurance	39,743	32,972	45,000	91,390	95,810
42312	Life Insurance	136	105	120	630	660
42313	Accidental Death & Disab Insurance	17	13	20	250	330
42428	Workers Comp - Parks (9102)	7,595	11,116	10,000	11,040	13,440
TOTAL PERSONNEL SERVICES		\$ 328,846	\$ 301,170	\$ 334,094	\$ 485,210	\$ 509,600
43430	Parking Lot Maintenance	-	-	2,000	2,000	2,000
43433	Lawn Maintenance	111,051	120,053	125,000	125,000	125,000
43499	Contractual Services - Misc	10,833	17,139	22,000	22,000	25,000
44011	Travel & Training	1,131	21	1,000	3,000	1,500
44121	Telephone - Local	1,158	1,079	600	1,200	600
44134	Data Lines	281	284	350	480	350
44311	Electric - City Facilities	16,798	19,657	19,750	18,000	20,000
44331	Trash Removal	2,376	2,166	5,000	8,000	5,000
44351	Water & Sewer - City	37,985	49,431	37,000	37,000	37,000
44373	Street Light Fee	136	137	140	140	140
44381	Stormwater Assessment	3,625	3,662	3,650	3,650	3,650
44419	Rent - Equipment/Software	753	1,641	1,000	1,000	1,000
44611	Maintenance & Repairs - Bldg & Grounds	33,040	66,306	50,000	50,000	50,000
44631	Maintenance & Repairs - Central Garage	13,080	6,645	3,500	6,480	4,000
44997	Other Charges - Memorial Items	-	503	1,000	4,000	2,000
44999	Other Current Charges - Misc	145	145	500	500	500
45111	Office Supplies - General	122	284	100	100	100
45141	Small Tools & Implements	1,760	3,439	3,000	4,000	3,000
45211	Fuel	19,155	14,256	12,000	22,000	16,000
45221	Chemicals	3,954	1,746	2,500	4,000	3,000
45231	Clothing & Apparel	3,535	2,328	3,000	3,000	3,000
45243	Computer/Operating Supply	-	233	300	300	1,300
45247	First Aid Supplies	-	32	100	100	100
45251	Janitorial Supplies	17,469	19,361	15,000	15,000	18,000
45289	Automotive Parts	12,305	16,541	4,000	7,000	5,000
45291	Operating Supplies - Disaster	-	-	5,000	-	2,500
45299	Operating Supplies - Misc	3,636	5,777	8,000	8,000	8,000
45321	Signs & Sign Material	1,130	3,385	3,000	3,000	3,000
45341	Sod/Seed	13,707	7,029	29,000	29,000	29,000
45411	Dues & Memberships	-	1,608	1,680	300	1,680
TOTAL OPERATING		\$ 309,165	\$ 364,888	\$ 359,170	\$ 378,250	\$ 371,420
46399	Improvements Other than Buildings	-	-	-	-	15,000
46415	Trucks & Trailers	-	35,074	-	-	-

GROUNDS MAINTENANCE

001110 EXP CODE CLASSIFICATION	ACTUAL FY17-18	ACTUAL FY18-19	ESTIMATE FY19-20	AMENDED BUDGET FY19-20	BUDGET AMOUNT FY20-21
46431 Special Purpose Equipment	8,634	4,508	15,000	15,000	-
TOTAL CAPITAL	\$ 8,634	\$ 39,582	\$ 15,000	\$ 15,000	\$ 15,000

TOTAL EXPENDITURES \$ 646,645 \$ 705,640 \$ 708,264 \$ 878,460 \$ 896,020

5-YEAR CAPITAL EQUIPMENT/IMPROVEMENT PROGRAM GROUNDS MAINTENANCE

EXP CODE	CLASSIFICATION	FY 20-21	FY 21-22	FY 22-23	FY 23-24	FY 24-25
46399	<i>Improvement Other than Buildings</i>					
	Commercial Storage Shed	15,000	-	-	-	-
	TOTAL	15,000	-	-	-	-
46416	<i>Heavy Equipment</i>					
	John Deere Tractor-#34 (R&R)	-	3,200	3,200	3,200	3,200
	Kubota Clambucket Bush Hog-#33 (R&R)	-	3,350	3,350	3,350	3,350
	TOTAL	-	6,550	6,550	6,550	6,550
46431	<i>Special Purpose Equipment</i>					
	Case Scout 4x4 Utility Vehicle (R&R)	-	1,200	1,200	1,200	1,200
	Club Cart Utility (R&R)	-	2,600	2,600	2,600	2,600
	TOTAL	-	3,800	3,800	3,800	3,800

DIVISION TOTAL \$ 15,000 \$ 10,350 \$ 10,350 \$ 10,350 \$ 10,350

PUBLIC WORKS - STORMWATER UTILITY

IT IS THE MISSION OF STORMWATER UTILITY TO

have a proactive inspection program that identifies flood prone areas, remediates those areas, expands or enlarges existing systems to eliminate the flood areas identified, and to improve water quality and quality of life for its residents, where applicable. This mission includes unfunded mandates and requirements of the Florida Department of Environmental Protection's National Pollution Discharge Elimination System Permit.

DESCRIPTION

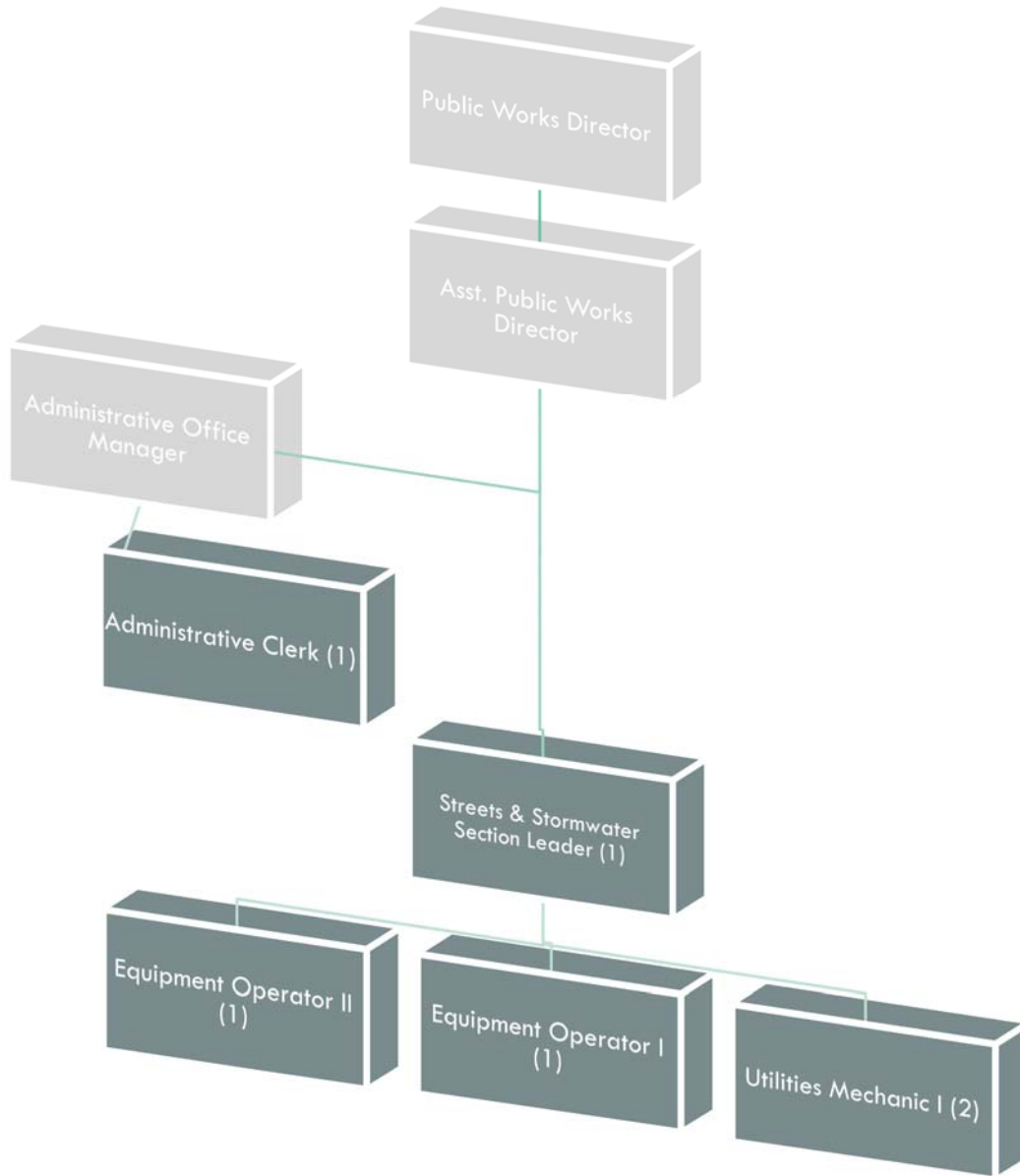
The Stormwater Utility Division is a special purpose service unit within city government that provides stormwater management, as required by the Environmental Protection Agency. This Division maintains 5 miles of ditches/ canals and 40 miles of stormwater pipes. In addition, this Division cleans and repairs catch basins, storm drain pipes, and ditches, while rebuilding or adding new structures, as needed.

ACCOMPLISHMENTS OF FY20

- Storm Pipe Maintenance:
 - Removed sediments from Maplewood retention pond and pond at Police Station
 - Removed and replaced storm drain lids and stormwater pipe failures
- NPDES Maintenance Activities:
 - Continued facility inspection and maintenance of CDS units, pipe, catch basins, and outfalls
 - Continued catch basin tag identification and "No Dumping" stencil installations
 - Continued street sweeping program on all curbed streets
 - Continued sediment removal and re-grading of stormwater ponds, existing ditches and swales
- Flood Control:
 - Continued to be proactive during heavy rain events, working safely and effectively during street and stormwater projects
- Job Safety:
 - Completed State Stormwater Inspector training
 - Conducted staff training on safety protocols and FEMA requirements

FY21 INITIATIVES

- Storm Pipe Maintenance:
 - Remove sediments from Pennsylvania Ave's detention pond
 - Tag and stencil all catch basins in Zone #1
- Stormwater Permit:
 - Continue stormwater inspections for our stormwater permit. Ex: ditches, swales, catch basins and pipes
 - Start regular route of stormwater drain cleaning and inspections
 - Make adjustments to City's stormwater infrastructure to be in compliance with stormwater permit
- Flood Control/Storm Situations:
 - Keeping all drain grates cleared and flowing during rain events
 - Continue being proactive during weather events like closing flooded streets and/or pedestrian safety concerns
 - Continue working safe and effectively during weather events
- Job Safety:
 - Send employees to stormwater classes and CDL classes



Authorized Personnel – Full-time Equivalent			
Position/Title	FY18-19	FY19-20	FY20-21
Streets & Stormwater Section Leader	1	1	1
Administrative Clerk	.72	1	1
Equipment Operator II	1	1	1
Equipment Operator I	1	1	1
Utilities Mechanic I	2	2	2
Total	5.72	6	6

STORMWATER UTILITY

002103					AMENDED	BUDGET
EXP		ACTUAL	ACTUAL	ESTIMATE	BUDGET	AMOUNT
CODE	CLASSIFICATION	FY17-18	FY18-19	FY19-20	FY19-20	FY20-21
41299	Regular Full-Time Wages	98,277	91,471	180,190	180,190	184,000
41311	Part-Time Wages	12,594	20,476	-	-	-
41411	Overtime Wages	14,498	14,037	15,000	31,720	20,000
41511	Employee Incentives	250	-	-	-	-
41527	Standby Time	7,286	7,085	7,000	5,820	7,000
41529	Meal Allowance	18	-	-	-	-
42111	Social Security Matching	9,860	9,711	16,680	16,680	17,010
42211	Florida Retirement System	11,221	9,355	13,980	13,980	14,620
42214	Defined Contribution Plan	-	5,890	4,850	4,850	4,970
42311	Health Insurance	22,048	13,299	45,980	45,980	52,260
42312	Life Insurance	73	54	340	340	360
42313	Accidental Death & Disab Insurance	9	7	140	140	180
42426	Workers Comp - Clerical (8810)	30	30	60	60	70
42433	Workers Comp - Irrigation Workers/Oper/Drivers (0251)	5,605	8,062	9,810	9,810	10,330
TOTAL PERSONNEL SERVICES		\$ 181,769	\$ 179,477	\$ 294,030	\$ 309,570	\$ 310,800
43129	Engineering Services - Misc	850	3,433	15,000	30,000	15,000
43199	Professional Services - Misc	4,968	3,278	15,000	30,000	15,000
43433	Lawn Maintenance	9,643	4,270	6,000	24,030	43,000
43438	Lab Test	-	-	5,000	10,000	5,000
43498	Administrative Fees	20,521	20,829	21,000	21,000	22,000
43499	Contractual Services - Misc	89,365	15,525	35,000	35,000	35,000
44011	Travel & Training	726	-	1,780	1,780	1,850
44121	Telephone - Local	1,302	525	1,300	1,300	1,800
44134	Data Lines	280	284	350	2,000	350
44141	Pager Services	70	70	70	100	70
44211	Postage	202	432	-	50	50
44311	Electric - City Facilities	14,875	13,219	12,000	12,000	12,000
44331	Trash Removal	48,250	14,053	13,000	11,000	13,000
44373	Street Light Fee	124	126	140	140	140
44381	Stormwater Assessment	413	357	1,100	1,100	1,100
44419	Rent - Equipment/Software	13,739	-	5,000	5,000	5,000
44511	Liability Insurance - Comp. General	10,373	8,529	9,000	9,000	9,000
44521	Building & Contents Insurance	3,170	3,095	3,100	3,100	3,100
44522	Pollution Insurance	3,763	4,405	4,400	4,400	4,400
44523	Automobile & Truck Insurance	908	759	750	750	750
44611	Maintenance & Repairs - Bldg & Grounds	2,383	13,130	13,000	15,000	13,000
44621	Maintenance & Repairs - Equipment	42	1,595	400	400	400
44631	Maintenance & Repairs - Central Garage	11,040	2,850	5,000	7,500	5,000
44983	Permit Fees	1,076	1,006	2,500	2,500	2,500
44999	Other Current Charges - Misc	1,251	1,374	2,000	2,000	2,000
45111	Office Supplies - General	655	476	1,000	1,000	1,000
45121	Maps & Charts	118	287	300	300	300
45141	Small Tools & Implements	1,107	6,618	7,000	7,000	5,000
45211	Fuel	16,661	31,876	20,000	25,000	20,000
45225	Software License Support	-	-	300	400	300
45231	Clothing & Apparel	783	791	1,600	1,600	1,600
45243	Computer/Operating Supply	879	3,898	2,900	2,900	4,300

STORMWATER UTILITY

002103					AMENDED	BUDGET
EXP		ACTUAL	ACTUAL	ESTIMATE	BUDGET	AMOUNT
CODE	CLASSIFICATION	FY17-18	FY18-19	FY19-20	FY19-20	FY20-21
45247	First Aid Supplies	42	119	200	200	200
45289	Automotive Parts	11,726	2,036	15,000	20,000	15,000
45291	Operating Supplies - Disaster	-	-	500	-	500
45299	Operating Supplies - Misc	7,121	8,963	9,000	12,000	9,000
45321	Signs & Sign Material	229	2,873	4,000	5,000	4,000
45331	Pipe/Culvert Material	2,915	974	10,000	10,000	10,000
45341	Sod/Seed	1,691	1,003	5,000	10,000	5,000
45399	Road Materials - Misc	3,910	3,812	7,500	10,000	7,500
45411	Dues & Memberships	30	95	200	200	650
45461	Books & Publications	-	-	200	200	200
TOTAL OPERATING		\$ 287,201	\$ 176,965	\$ 256,590	\$ 334,950	\$ 295,060
46399	Improvements Other Than Bldg - Misc	-	-	704,970	704,970	312,000
46431	Special Purpose Equipment	-	-	63,000	63,000	53,000
TOTAL CAPITAL		\$ -	\$ -	\$ 767,970	\$ 767,970	\$ 365,000
581						
49151	Transfer to General Fund	130,000	130,000	130,000	130,000	130,000
49153	Transfer to Capital Improvement Fund	403,000	353,000	-	-	-
49157	Transfer to W&S Construction Fund	10,000	-	30,900	30,900	-
TOTAL TRANSFERS		\$ 543,000	\$ 483,000	\$ 160,900	\$ 160,900	\$ 130,000
TOTAL EXPENDITURES		\$ 1,011,970	\$ 839,442	\$ 1,479,490	\$ 1,573,390	\$ 1,100,860

5-YEAR CAPITAL EQUIPMENT/IMPROVEMENT PROGRAM STORMWATER UTILITY

EXP CODE	CLASSIFICATION	FY 20-21	FY 21-22	FY 22-23	FY 23-24	FY 24-25
46399	<i>Improvements Other than Buildings - Misc.</i>					
	Misc. Flood Control/Water Quality Projects	100,000	100,000	200,000	200,000	200,000
	2018 Beach St. Stormwater Improv. (Engineering)	3,000	3,000	3,000	-	-
	2018 Beach St. Stormwater Improv. (Construction)	-	500,000	500,000	-	-
	2019 Grand Blvd. Drainage Imprv. (Engineering)	5,000	-	-	-	-
	2019 Grand Blvd. Drainage Improv. (Construction)	200,000	-	-	-	-
	2021 Carlton Rd., Dartmouth Rd., Berkley Ave. Drainage Improv. (Engineering)	4,000	30,000	10,000	-	-
	2021 Carlton Rd., Dartmouth Rd., Berkley Ave. Drainage Improv. (Construction)	-	-	250,000	200,000	-
	2022 Downtown Drainage Imprv.-Phase I (Engineering)	-	30,000	-	-	-
	2022 Downtown Drainage Imprv.-Phase I (Construction)	-	-	-	300,000	300,000
	2023 Aspen St. Drainage Project (Engineering)	-	-	3,000	63,000	-
	2023 Aspen St. Drainage Project (Construction)	-	-	-	200,000	200,000
	TOTAL	312,000	663,000	966,000	963,000	700,000
46413	<i>Data Processing Equipment</i>					
	Computer	-	-	2,800	-	-
	Laptop	-	2,400	-	-	2,400
	TOTAL	-	2,400	2,800	-	2,400
46415	<i>Trucks and Trailers</i>					
	Vacuum Line Cleaning Truck (R&R)	-	50,000	50,000	50,000	50,000
	GMC C6500 Water Tanker Truck #69	-	25,000	80,000 (a)	7,000	7,000
	TOTAL	-	75,000	130,000	57,000	57,000
46416	<i>Heavy Equipment</i>					
	New Holland Flail Mower #11 (R&R)	-	5,000	5,000	5,000	5,000
	John Deere Slope Mower #41 (R&R)	-	2,500	2,500	2,500	2,500
	TYMCO 600 Street Sweeper #102 (R&R)	-	17,500	17,500	17,500	17,500
	TOTAL	-	25,000	25,000	25,000	25,000
46431	<i>Special Purpose Equipment</i>					
	S30 Mid-Size Rider Sweeper (R&R)	-	2,000	2,000	2,000	2,000
	4" Portable Pump with Accessories	50,000	-	-	-	-
	Portable Pumping System (R&R)	3,000	3,000	3,000	3,000	3,000
	TOTAL	53,000	5,000	5,000	5,000	5,000

DIVISION TOTAL \$ 365,000 \$ 770,400 \$ 1,128,800 \$ 1,050,000 \$ 789,400

PUBLIC WORKS – WATER PRODUCTION

IT IS THE MISSION OF WATER PRODUCTION TO

operate, maintain, and manage the City of New Port Richey's Joseph A. Maytum Water Treatment Plant in the professional manner required to deliver a reliable and adequate supply of safe drinking water, at a pressure that meets the safety and needs of all our customers throughout the distribution system.

DESCRIPTION

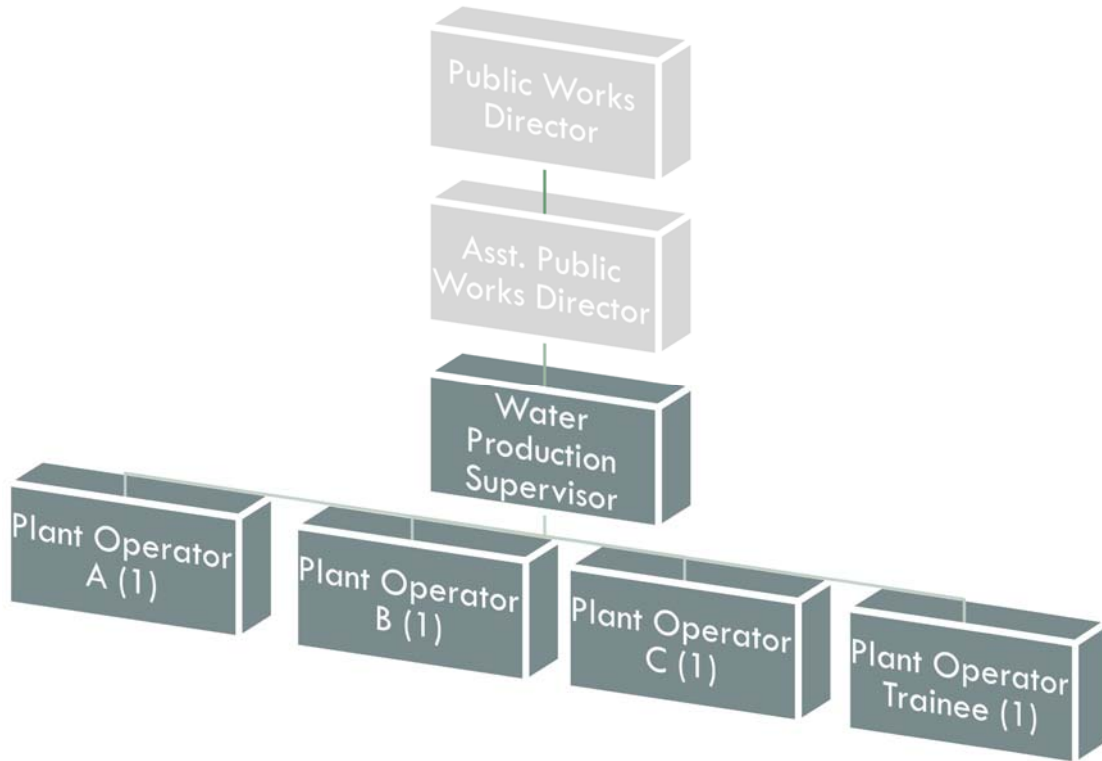
The Water Production Division is responsible for providing residents with water that meets or is better than standards set by the Environmental Protection Agency (EPA).

ACCOMPLISHMENTS OF FY20

- Produced a quality drinking water for delivery to City and Region on a consistent basis
- Maintained proper system pressure and disinfectant and fluoride levels throughout the distribution system
- Replaced Fluoride Bulk and Day tanks and all fluoride system piping
- Installed new computer work station and upgraded the existing one
- Rescreened aerators and ground storage reservoirs
- Replaced existing sign and installed new landscaping at Plant
- Installed Variable Frequency Drive for High Service Pump #2 and integrated the pump room into the SCADA system
- Rehabilitated Well Houses #4, #6, and #10 and built new shed and installed new meter for Well House #5

FY21 INITIATIVES

- Monitor legislation impacting the rules and regulations of the water treatment industry
- Conduct mandatory DEP inspections on GSR's and Elevated Storage Tank, required every 5 years
- Replace Bleach Tank #2
- Rehabilitate Well House #5
- Install valves on effluent pipes for HSP's #1 and #2
- Replace Amperometric Titrator
- Replace pressure washer
- Replace UPS's throughout Plant
- Continue enhancements on SCADA system
- Repair pump room and chemical building exhaust fans and replace, as necessary



Authorized Personnel – Full-time Equivalent			
Position/Title	FY18-19	FY19-20	FY20-21
Water Productions Supervisor	1	1	1
Lead Plant Operator B	1	1	1
Plant Operator B	1	1	1
Plant Operator C	2	2	1
Plant Operator Trainee	0	0	1
Total	5	5	5

W&S WATER PRODUCTION

401105					AMENDED	BUDGET
EXP		ACTUAL	ACTUAL	ESTIMATE	BUDGET	AMOUNT
CODE	CLASSIFICATION	FY17-18	FY18-19	FY19-20	FY19-20	FY20-21
41112	Division Head Salaries	56,543	59,129	58,240	58,240	59,700
12-10	Regular Exempt Salaries	2,120	-	-	-	-
41299	Regular Full-Time Wages	133,234	151,245	156,440	156,440	158,620
41411	Overtime Wages	4,264	4,565	5,640	5,640	5,720
41511	Employee Incentives	250	-	-	-	-
41527	Standby Time	15,682	16,728	15,460	15,460	16,730
15-29	Meal Allowance	-	-	-	-	150
42111	Social Security Matching	15,280	16,992	18,060	18,060	18,430
42211	Florida Retirement System	20,576	21,326	19,480	19,480	20,400
42311	Health Insurance	25,005	18,125	41,540	41,540	43,550
42312	Life Insurance	91	91	290	290	300
42313	Accidental Death & Disab Insurance	11	12	120	120	150
42421	Workers Comp - Waterworks Oper/SLSMN Drivers (7520)	11,870	19,818	10,770	10,770	12,140
TOTAL PERSONNEL SERVICES		\$ 284,926	\$ 308,031	\$ 326,040	\$ 326,040	\$ 335,890
43129	Engineering Services - Misc	21,965	3,457	10,000	10,000	10,000
43199	Professional Services - Misc.	-	-	-	-	60,000
43412	Pest Control Services	409	440	440	440	440
43438	Lab Test	1,472	2,052	6,000	6,000	6,000
43474	Security Services	2,374	2,552	3,000	3,000	3,000
43499	Contractual Services - Misc	35,839	18,410	20,000	20,000	35,000
44011	Travel & Training	-	820	1,470	1,470	1,640
44121	Telephone - Local	1,452	1,771	3,000	3,000	3,000
44134	Data Lines	4,446	4,869	6,000	6,000	6,000
44141	Pager Services	96	46	160	160	-
44211	Postage	2,230	2,536	4,000	4,000	4,000
44221	Freight Express Charges	-	-	30	30	30
44311	Electric - City Facilities	99,588	98,355	124,290	124,290	124,290
44331	Trash Removal	809	817	1,500	1,500	1,500
44373	Street Light Fee	38	38	50	50	60
44381	Stormwater Assessment	282	284	300	300	330
44611	Maintenance & Repairs - Bldg & Grounds	19,027	30,700	50,000	50,000	50,000
44621	Maintenance & Repairs - Equipment	717	1,484	2,000	2,000	2,000
44631	Maintenance & Repairs - Central Garage	810	791	3,000	3,000	3,000
44983	Permit Fees	6,000	6,025	6,030	6,030	6,030
44999	Other Current Charges - Misc	15,572	-	110	110	1,100
45111	Office Supplies - General	382	966	500	2,150	500
45121	Maps & Charts	-	-	-	500	250
45141	Small Tools & Implements	145	503	500	500	750
45211	Fuel	7,438	5,531	10,000	10,000	10,000
45221	Chemicals	84,840	73,011	129,170	129,170	129,170
45222	Laboratory Supplies	4,997	6,793	7,000	7,000	7,000
45231	Clothing & Apparel	1,310	1,313	1,500	1,500	1,500
45243	Computer/Operating Supply	523	3,319	3,000	3,000	1,500
45247	First Aid Supplies	122	56	250	250	250
45251	Janitorial Supplies	-	505	800	800	800
45261	Raw Water	2,585,962	2,880,261	2,900,000	2,900,000	3,050,000
45289	Automotive Parts	2,091	276	3,000	3,000	3,000

W&S WATER PRODUCTION

401105 EXP CODE	CLASSIFICATION	ACTUAL FY17-18	ACTUAL FY18-19	ESTIMATE FY19-20	AMENDED BUDGET FY19-20	BUDGET AMOUNT FY20-21
45294	Conservation Kits & Materials	8,408	19,499	12,000	12,000	12,000
45299	Operating Supplies - Misc	2,684	2,132	2,500	2,500	2,500
45411	Dues & Memberships	320	645	840	840	840
45461	Books & Publications	-	-	200	200	200
TOTAL OPERATING		\$ 2,912,348	\$ 3,170,257	\$ 3,312,640	\$ 3,314,790	\$ 3,537,680
46299	Building Improvements	-	-	2,400	2,400	-
46341	Elevated Storage Tank	-	-	20,000	20,000	175,000
46344	City Well Repairs	-	-	10,000	10,000	10,000
46345	Ground Storage Reservoirs	-	-	10,000	10,000	25,000
46399	Improvements Other Than Bldg - Misc	-	-	81,000	81,000	170,000
46417	Communication Equipment	-	-	50,000	50,000	50,000
46431	Special Purpose Equipment	-	-	25,000	25,000	25,800
TOTAL CAPITAL		\$ -	\$ -	\$ 198,400	\$ 198,400	\$ 455,800

TOTAL EXPENDITURES \$ 3,197,274 \$ 3,478,288 \$ 3,837,080 \$ 3,839,230 \$ 4,329,370

5-YEAR CAPITAL EQUIPMENT/IMPROVEMENT PROGRAM W&S WATER PRODUCTION

EXP CODE	CLASSIFICATION	FY 20-21	FY 21-22	FY 22-23	FY 23-24	FY 24-25
46341	<i>Elevated Storage Tank</i>					
	Clean/Paint Elevated Storage Tank	155,000	-	-	-	-
	Elevated Storage Tank (R&R)	20,000	30,000	20,000	20,000	20,000
	Pax Mixer	-	40,000	-	-	-
	TOTAL	175,000	30,000	20,000	20,000	20,000
46344	<i>City Well Repairs</i>					
	City Well Repairs (R&R)	10,000	10,000	10,000	10,000	10,000
	TOTAL	10,000	10,000	10,000	10,000	10,000
46345	<i>Ground Storage Reservoirs</i>					
	Ground Storage Reservoirs (R&R)	15,000	60,000	10,000	10,000	10,000
	Cleaning and Inspection	10,000	-	-	-	-
	TOTAL	25,000	60,000	10,000	10,000	10,000
43699	<i>Improvements Other than Buildings</i>					
	Equipment Maintenance & Repair	10,000	100,000	100,000	10,000	10,000
	Stand-by Power Equipment (R&R)	10,000	10,000	10,000	10,000	10,000
	Process Equipment (R&R)	10,000	10,000	10,000	10,000	10,000
	Rehab to Well #5	20,000	-	-	-	-
	Valves on HSP's 1 and 2 Effluent Piping	20,000	-	-	-	-
	High Service Pump at Elevated Storage Tank (R&R)	100,000	200,000	10,000	10,000	10,000
	TOTAL	170,000	320,000	130,000	205,000	40,000
46417	<i>Communication Equipment</i>					
	SCADA Improvements, Phase III	50,000	-	-	-	-
	TOTAL	50,000	-	-	-	-
46434	<i>Special Purpose Equipment</i>					
	Chlorine Bulk Storage Tank	18,000	-	18,000	20,000	-
	Amperometric Titrator	6,000	-	-	-	-
	Pressure Washer	1,800	-	-	-	-
	On-line Free Ammonia Analyzer	-	42,000	42,000	-	-
	Emergency Shower w/ Eye Wash - Fluoride Area	-	4,200	4,200	4,200	-
	Ammonia Bulk Storage Tank (2)	-	12,000	-	-	-
	Roof on Pump Room	-	25,000	-	-	-
	Commercial Lawn Tractor	-	10,000	-	-	-
	Chlorine Day Storage Tank	-	5,000	-	-	-
	Refrigerator	-	1,500	-	-	-
	Variable Frequency Drive	-	-	16,000	-	-
	Depoloxes (3)	-	-	-	20,000	-
	Transfer Pumps - Bleach, Fluoride, Ammonia	-	-	-	-	11,000
	TOTAL	25,800	99,700	80,200	44,200	11,000

DIVISION TOTAL \$ 455,800 \$ 519,700 \$ 250,200 \$ 289,200 \$ 91,000

PUBLIC WORKS – WATER & RECLAIMED WATER DISTRIBUTION

IT IS THE MISSION OF WATER & RECLAIMED WATER DISTRIBUTION TO

maintain and upgrade the City's potable water system. To demonstrate a high level of service that includes, but is not limited to, proactive maintenance activities, expansion of the water system where possible monitor and evaluate all current regulatory requirements, a one hour response to emergency water breaks, a 24 hour response to all internal and external inquiries, and finally to demonstrate a high level of professionalism to all City residents and Utility customers.

DESCRIPTION

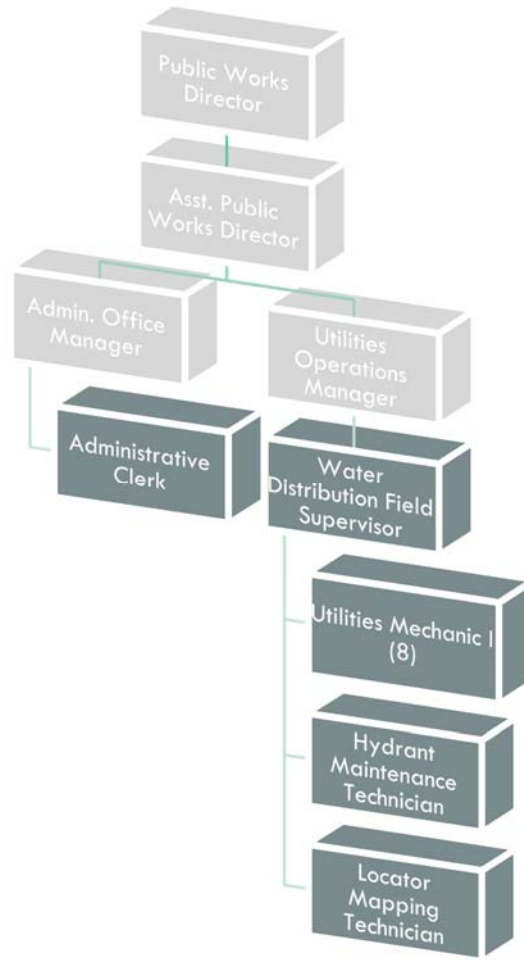
The City of New Port Richey has in excess of 11,000 water services, ranging in meter size from 3/4 inch to 10 inches. These services provide water to businesses, trailer parks, offices, restaurants, medical facilities, and individual and bulk customers. The Water Distribution Division oversees these water lines, which total over 131 miles, and range in size from 1 1/2 inches to 30 inches in diameter.

ACCOMPLISHMENTS OF FY20

- System Acquisitions:
 - Completed installation of meters and meter boxes at Orange Lakes
 - Installed additional valves to help reduce the amount of residents effected if a shutout was required
- Continued with the proactive valve and hydrant maintenance and mapping:
 - Repaired, replaced and raised hydrants where needed
 - Replaced valves as needed
 - Mapped and record measurements for work done or facilities located
- Continued equipment and machinery training for all personnel completed

FY21 INITIATIVES

- Potable Water Meters/Reclaimed Water Meters:
 - Replace all large outdated or damaged commercial and multi-family potable water meters
 - Begin replacing all retrofit SR11 potable water meters with Ipearl water meters
 - Implement new reclaimed water site inspection Standard Operating Procedures
- Watermain Valves:
 - Test valves in pre-planned areas throughout the city to see which need replacement
 - Put together a "problem valves" list to strategically repair/replace valves
 - Get a list together for valves that need to be raised/lowered and need valve pads per City specs
- Fire Hydrant Technician / Backflow Testing:
 - Implement improvements to the fire hydrant technician and back flow testing job description
 - Give that person the proper training that they will need to be efficient and thorough
 - Combine backflow testing and fire hydrant testing



Authorized Personnel – Full-time Equivalent			
Position/Title	FY18-19	FY19-20	FY20-21
Water Distribution Section Leader	1	1	1
Utilities Mechanic I	6	8	8
Hydrant Maintenance Technician	1	1	1
Administrative Assistant	1	1	1
Locator Mapping Technician	1	1	1
Total	10	12	12

W&S WATER & RECLAIMED WATER DISTRIBUTION

401107		AMENDED				BUDGET
EXP		ACTUAL	ACTUAL	ESTIMATE	BUDGET	AMOUNT
CODE	CLASSIFICATION	FY17-18	FY18-19	FY19-20	FY19-20	FY20-21
41299	Regular Full-Time Wages	225,603	191,851	235,000	346,550	351,730
41411	Overtime Wages	15,484	35,828	37,000	52,790	53,540
41511	Employee Incentives	450	-	-	-	-
41527	Standby Time	9,535	10,807	11,820	11,820	11,990
41529	Meal Allowance	45	150	-	-	300
42111	Social Security Matching	18,507	17,722	21,000	32,250	32,700
42211	Florida Retirement System	21,050	20,544	25,000	33,960	35,340
42311	Health Insurance	42,505	32,471	40,000	91,390	95,810
42312	Life Insurance	177	112	500	680	720
42313	Accidental Death & Disab Insurance	22	16	150	280	360
42421	Workers Comp - Waterworks Oper/SLSMN Drivers (7520)	11,740	10,757	10,500	12,940	15,090
42426	Workers Comp - Clerical (8810)	69	63	50	70	80
TOTAL PERSONNEL SERVICES		\$ 345,187	\$ 320,321	\$ 381,020	\$ 582,730	\$ 597,660
43199	Professional Services - Misc	16,146	10,335	75,000	75,000	100,000
43442	Call Candy Services	2,111	2,221	3,000	4,000	3,000
43499	Contractual Services - Misc	8,167	11,588	37,000	37,000	30,000
44011	Travel & Training	1,508	615	1,000	4,140	4,570
44121	Telephone - Local	2,753	1,595	2,000	6,000	4,000
44134	Data Lines	1,049	1,051	2,000	2,000	2,000
44141	Pager Services	70	131	160	160	-
44211	Postage	48	627	750	750	750
44331	Trash Removal	7,569	9,126	10,000	7,500	10,000
44419	Rent - Equipment/Software	-	240	500	500	500
44463	Lease - Automobiles & Trucks	-	-	4,369	4,370	4,370
44571	Notary Bond	-	-	150	150	150
44611	Maintenance & Repairs - Bldg & Grounds	789	1,087	6,900	6,900	6,900
44621	Maintenance & Repairs - Equipment	34	2,923	2,000	2,000	2,000
44631	Maintenance & Repairs - Central Garage	13,815	10,935	10,000	10,000	10,000
45111	Office Supplies - General	641	517	800	800	800
45141	Small Tools & Implements	4,887	5,856	7,700	7,700	7,700
45211	Fuel	52,780	48,356	45,000	50,000	45,000
45225	Software License Support	25,920	22,770	26,000	26,000	26,000
45231	Clothing & Apparel	2,826	2,497	3,400	3,400	3,400
45243	Computer/Operating Supply	1,296	1,156	1,400	1,400	3,400
45247	First Aid Supplies	43	37	200	200	200
45271	Meters	42,129	98,554	33,000	33,000	33,000
45272	Pipe	1,852	7,307	10,000	10,000	10,000
45273	Hydrants	9,838	3,477	10,000	10,000	10,000
45274	Valves & Clamps	30,296	49,029	70,000	70,000	70,000
45279	Water & Sewer Supplies - Misc	-	207	5,000	5,000	5,000
45289	Automotive Parts	65,981	24,113	30,000	30,000	30,000
45298	Inventory Adjustments	6,050	9,363	350	-	-
45299	Operating Supplies - Misc	36,207	21,021	15,000	15,000	15,000
45311	Asphalt/Concrete	786	202	-	-	-
45341	Sod/Seed	1,897	258	4,000	4,500	4,000
45399	Road Materials - Misc	3,115	2,857	8,000	10,000	8,000
45411	Dues & Memberships	30	125	400	400	400

W&S WATER & RECLAIMED WATER DISTRIBUTION

401107 EXP CODE	CLASSIFICATION	ACTUAL FY17-18	ACTUAL FY18-19	ESTIMATE FY19-20	AMENDED BUDGET FY19-20	BUDGET AMOUNT FY20-21
45461	Books & Publications	-	-	240	240	240
TOTAL OPERATING		\$ 340,633	\$ 350,176	\$ 425,319	\$ 438,110	\$ 450,380
46399	Improvements Other Than Bldg - Misc	-	-	10,000	10,000	10,000
46415	Trucks & Trailers	-	-	-	-	120,000
46416	Heavy Equipment	-	-	70,500	70,500	67,500
TOTAL CAPITAL		\$ -	\$ -	\$ 80,500	\$ 80,500	\$ 197,500

TOTAL EXPENDITURES \$ 685,820 \$ 670,497 \$ 886,839 \$ 1,101,340 \$ 1,245,540

5-YEAR CAPITAL EQUIPMENT/IMPROVEMENT PROGRAM W&S WATER & RECLAIMED WATER DISTRIBUTION

EXP CODE	CLASSIFICATION	FY 20-21	FY 21-22	FY 22-23	FY 23-24	FY 24-25
46399	<i>Improvements Other Than Buildings - Misc.</i>					
	Equipment Maintenance & Repair	10,000	10,000	10,000	10,000	10,000
	TOTAL	10,000	10,000	10,000	10,000	10,000
46413	<i>Data Processing Equipment</i>					
	Laptop Computer	-	2,400	-	-	2,400
	Desktop Computer	-	-	2,800	-	-
	TOTAL	-	2,400	2,800	-	2,400
46415	<i>Trucks and Trailers</i>					
	#304 SE7302 202 VacTon Trailer	120,000	-	-	-	-
	TOTAL	120,000	-	-	-	-
46416	<i>Heavy Equipment</i>					
	Pipe Hunter Vac Truck Mounted #77 (R&R)	10,000	10,000	10,000	10,000	10,000
	John Deere Payloader #7 (R&R)	30,000	30,000	150,000 (a)	10,000	10,000
	CAT Backhoe #14 (R&R)	16,000	16,000	16,000	80,000 (b)	16,000
	Bobcat Track Loader T-190 #70 (R&R)	10,000	10,000	10,000	10,000	10,000
	Horizontal Boring Missile - Pneumatic	1,500	1,500	1,500	1,500	1,500
	TOTAL	67,500	67,500	187,500	111,500	47,500

DIVISION TOTAL \$ 197,500 \$ 79,900 \$ 200,300 \$ 121,500 \$ 59,900

- (a) Year of Acquisition (\$30,000 in R&R)
- (b) Year of Acquisition (\$32,000 in R&R)

PUBLIC WORKS – CONSTRUCTION SERVICES

IT IS THE MISSION OF CONSTRUCTION SERVICES TO

to design and construct capital projects in accordance with Capital Improvement Programs and Master Plans; to support the City with all private project construction; to display a high level of professionalism and transparency and finally, to keep current on design and construction practices with an emphasis on environmental best management practices.

DESCRIPTION

It is the responsibility of the Construction Services Division to design and construct capital projects, in accordance with the City's Capital Improvement Program and master plans.

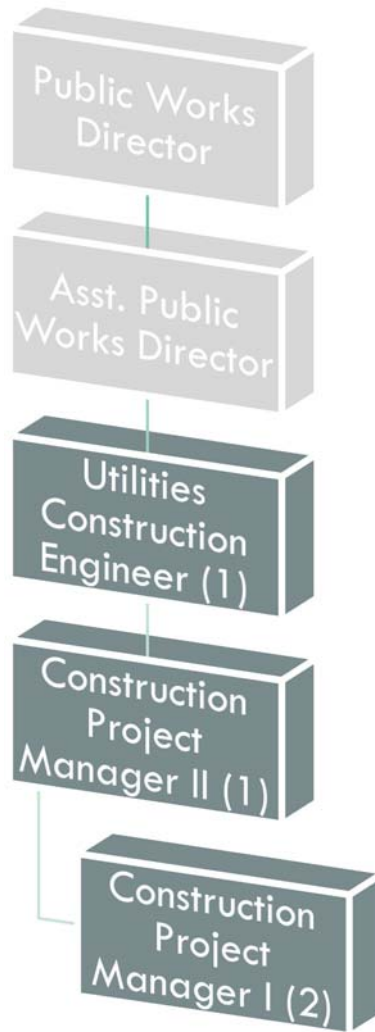
ACCOMPLISHMENTS OF FY20

- Projects:
 - 2017-Way Finding - Construction Project (Phase II)
 - 2015-2016-Sewer Utility Improvements - Construction Phase
 - 2017-Grand Blvd Stormwater Improvement - Design Phase
 - 2014-Orange Lake Restoration Improvements - Construction Phase
 - 2017-Seawall Repair at Sims Park, Cotee River Park, and Grand Blvd. Park
 - 2017-2018-Street Improvements - Construction Phase
 - Beach Street Stormwater Improvements - Design Phase
 - Orangewood Lift Station and FM - Design Phase
 - 2017-Main Street Improvements - Construction Phase
 - 2018-2019 Sewer Improvement - Design Phase
 - 2018-2019 Street Improvement - Construction Phase
 - 2019 Fleet Warehouse & Storage Improvements - Architect Selection Phase
 - 2019-Gloria Swanson Parking Lot Improvements – Construction Phase
 - Library Renovations & Furnishing – Design Phase
- Development Review Committee:
 - Develop and implement standard operating procedures for utility reviews
 - Process all Development Department's permit applications for the City

FY21 INITIATIVES

- Provide Construction Management Support for the following City CIP Projects:
 - 2019-Fleet Warehouse Storage Improvement - Design & Construction Project
 - 2018-2019-Sewer System Improvements - Design Phase
 - 2017-Grand Blvd Stormwater Improvement - Construction Phase
 - 2018-James Grey Preserve Improvements (Phase 1) – Design Phase
 - 2020-Fire Station No. 2 – Design Phase
 - 2020-Frances Ave. Park Shelter Improvements – Construction Phase
 - 2018-Grand Blvd MUP - Design Project
 - 2019-Gloria Swanson Parking Lot Improvement - Construction Project
 - 2019-Orangewood Lift Station and FM - Construction Project
 - 2020-Orangewood Water System Improvements – Design Phase
 - 2020-Seawall Repair at Jasmin Park
 - 2020-Sims Park Boat Ramp Improvement – Design Phase
 - 2020-WWTP Headworks Containment Berm – Design & Construction Phase

- 2020-WWTP Process Piping Condition Assessment (Phase II) – Design & Construction Phase
- Provide Construction Management Support for the following private projects:
 - 2020-Ozanum II Wastewater FM
 - 2020-Dollar General Wastewater FM
- Update the City's Construction Standards and Details:
 - Continue with meeting Public Works Staff for information reviews and updates
 - Continue to update City's Construction Standards and Materials Specification
 - Continue to update the City's Details using AutoCAD



Authorized Personnel – Full-time Equivalent			
Position/Title	FY18-19	FY19-20	FY20-21
Utilities Construction Engineer	0	0	1
Construction Engineer Inspection Manager	1	1	0
Construction Project Manager II	1	1	1
Construction Project Manager I	1	2	2
Total	3	4	4

W&S CONSTRUCTION SERVICES

401109 EXP CODE	CLASSIFICATION	ACTUAL FY17-18	ACTUAL FY18-19	ESTIMATE FY19-20	AMENDED BUDGET FY19-20	BUDGET AMOUNT FY20-21
11-12	Division Head Salaries	-	-	12,000	12,000	68,700
41210	Regular Exempt Salaries	58,428	58,760	46,120	58,760	-
41299	Regular Full-Time Wages	127,541	132,714	149,390	149,390	131,980
41411	Overtime Wages	4,300	12,891	15,630	15,630	11,900
41511	Employee Incentives	200	-	-	-	-
41529	Meal Allowance	75	-	-	-	-
42111	Social Security Matching	13,407	14,210	18,970	18,970	16,270
42211	Florida Retirement System	15,887	17,636	20,470	20,470	18,010
42311	Health Insurance	42,651	39,479	41,540	41,540	34,840
42312	Life Insurance	85	69	290	290	240
42313	Accidental Death & Disab Insurance	10	10	120	120	120
42432	Workers Comp - Municipal Class (9410)	14,046	13,579	14,080	14,080	8,600
TOTAL PERSONNEL SERVICES		\$ 276,630	\$ 289,348	\$ 318,610	\$ 331,250	\$ 290,660
43199	Professional Services - Misc.	-	-	24,000	24,000	-
43499	Contractual Services - Misc	1,409	1,385	1,500	1,500	1,500
44011	Travel & Training	2,102	42	1,800	1,800	1,960
44121	Telephone - Local	1,827	2,336	2,500	2,500	2,200
44134	Data Lines	281	284	1,800	1,800	800
44211	Postage	3	247	150	150	150
44463	Lease - Automobiles & Trucks	-	-	1,440	1,440	1,440
44611	Maintenance & Repairs - Bldg & Grounds	-	-	500	500	500
44623	Maintenance & Repairs - Copiers	494	348	2,000	2,000	2,000
44631	Maintenance & Repairs - Central Garage	630	570	1,000	1,000	1,000
45111	Office Supplies - General	285	411	400	400	400
45141	Small Tools & Implements	48	269	300	300	300
45211	Fuel	6,385	6,269	7,000	9,000	7,000
45225	Software License Support	2,993	295	6,000	6,000	6,000
45231	Clothing & Apparel	361	321	400	500	400
45243	Computer/Operating Supply	1,068	-	500	500	6,000
45289	Automotive Parts	1,155	3,395	5,000	5,000	5,000
45299	Operating Supplies - Misc	2,245	845	1,000	1,200	1,000
45411	Dues & Memberships	-	148	200	200	200
TOTAL OPERATING		\$ 21,286	\$ 17,165	\$ 57,490	\$ 59,790	\$ 37,850
TOTAL EXPENDITURES		\$ 297,916	\$ 306,513	\$ 376,100	\$ 391,040	\$ 328,510

PUBLIC WORKS – RECLAIMED WATER PRODUCTION

IT IS THE MISSION OF RECLAIMED WATER PRODUCTION TO

protect health and the environment by operating and maintaining the reclaim water production facility at its highest efficiency. Comply with regulatory requirements and produce high quality water for beneficial reuse. Be innovative and creative to hold cost to a minimum.

DESCRIPTION

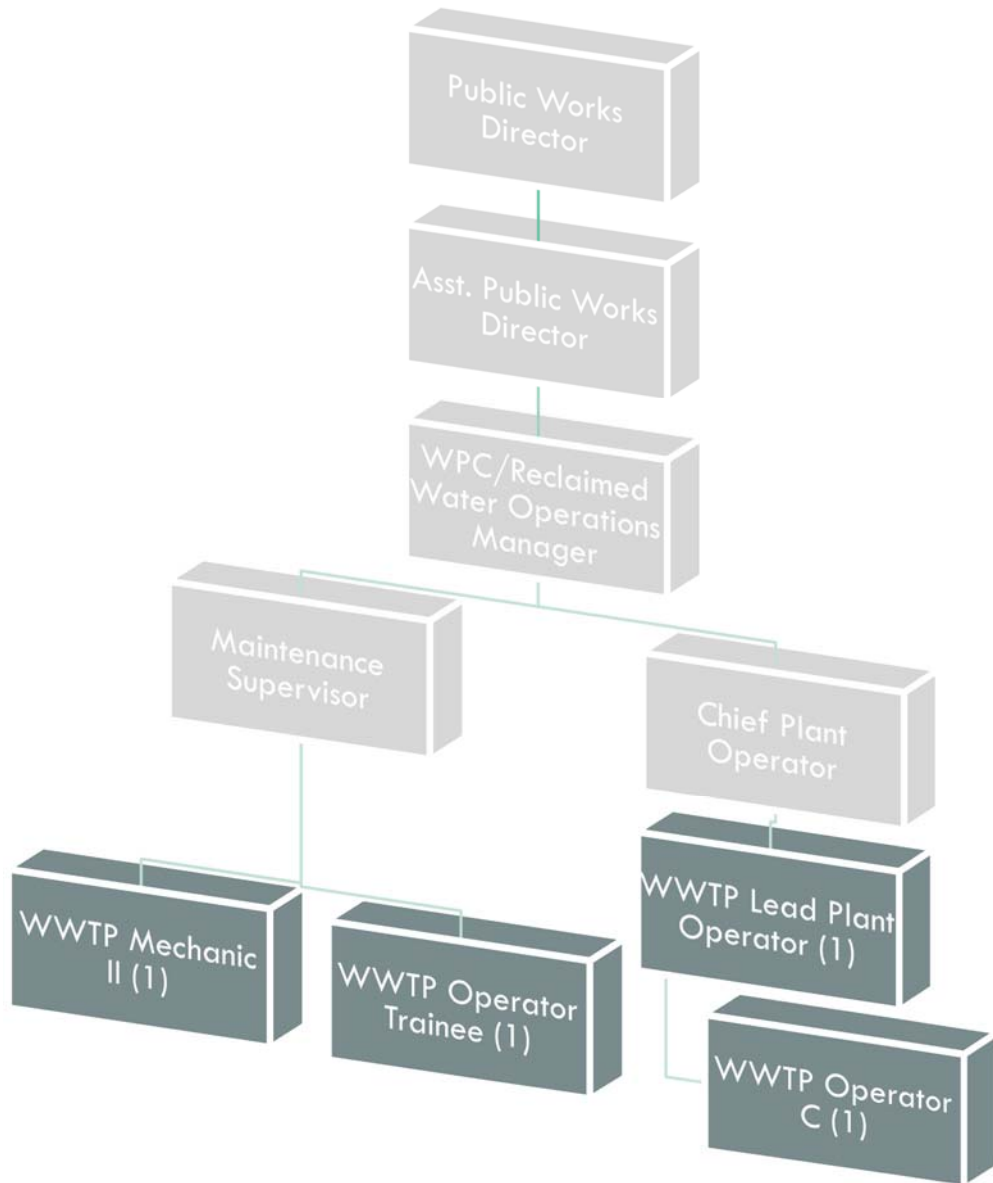
The Reclaimed Water Production Division is responsible for the operation of the wastewater treatment plant and producing and providing reclaimed water for beneficial reuse.

ACCOMPLISHMENTS OF FY20

- Produced and distributed 1.9 billion gallons for beneficial reuse
- Continue to seek out ways to be more energy efficient
- Painting of 2 Reuse tanks and 4 Aeration tanks
- Continue with Bayou Plan Study

FY21 INITIATIVES

- Continue to provide high quality reuse water for beneficial reuse
- Continue to seek out ways to be more energy efficient
- Capital Projects:
 - Rebuild Reclaim Transfer Pump
 - Reclaim Transfer Pump VFD



Authorized Personnel – Full-time Equivalent			
Position/Title	FY18-19	FY19-20	FY20-21
WWTP Lead Plant Operator	1	1	1
WWTP Operator C	1	1	1
WWTP Mechanic II	1	1	1
WWTP Operator Trainee	1	1	1
Total	4	4	4

W&S RECLAIMED WATER PRODUCTION

401111					AMENDED	BUDGET
EXP		ACTUAL	ACTUAL	ESTIMATE	BUDGET	AMOUNT
CODE	CLASSIFICATION	FY17-18	FY18-19	FY19-20	FY19-20	FY20-21
41299	Regular Full-Time Wages	163,018	156,294	153,690	153,690	162,050
41411	Overtime Wages	9,638	8,247	6,520	6,520	6,920
41511	Employee Incentives	250	-	-	-	-
41527	Standby Time	9,590	9,999	9,990	9,990	10,800
41529	Meal Allowance	-	-	150	150	150
42111	Social Security Matching	13,291	12,452	13,050	13,050	13,770
42211	Florida Retirement System	15,520	14,844	14,060	14,060	15,230
42311	Health Insurance	40,652	44,378	33,230	33,230	34,840
42312	Life Insurance	96	75	230	230	240
42313	Accidental Death & Disab Insurance	12	10	90	90	120
42422	Workers Comp - Sewage Disp/Plant/Oper/Drivers (7580)	6,582	5,435	8,100	8,100	7,090
TOTAL PERSONNEL SERVICES		\$ 258,649	\$ 251,734	\$ 239,110	\$ 239,110	\$ 251,210
43438	Lab Test	8,282	82,624	60,000	60,000	60,000
43499	Contractual Services - Misc	359	42	270	270	270
44011	Travel & Training	1,268	135	1,000	1,790	1,790
44211	Postage	-	244	30	30	30
44311	Electric - City Facilities	262,217	258,552	275,000	275,000	275,000
44599	Insurance	-	-	1,000	1,000	1,000
44611	Maintenance & Repairs - Bldg & Grounds	40,555	28,381	41,000	41,000	41,000
44621	Maintenance & Repairs - Equipment	2,983	3,234	3,800	3,800	3,800
44951	Excess Reclaimed Water Expense	-	-	-	50,000	50,000
45111	Office Supplies - General	500	-	100	100	100
45221	Chemicals	77,277	94,494	90,640	90,640	90,640
45222	Laboratory Supplies	242	234	200	200	200
45231	Clothing & Apparel	1,212	1,027	1,450	1,450	1,450
45251	Janitorial Supplies	215	-	220	220	220
45299	Operating Supplies - Misc	398	10	500	500	500
45411	Dues & Memberships	-	150	300	300	300
TOTAL OPERATING		\$ 395,508	\$ 469,127	\$ 475,510	\$ 526,300	\$ 526,300
46299	Building Improvements	-	-	210,000	210,000	10,000
46399	Improvements Other than Buildings	-	-	20,000	20,000	86,000
46431	Special Purpose Equipment	-	-	13,000	13,000	-
TOTAL CAPITAL		\$ -	\$ -	\$ 243,000	\$ 243,000	\$ 96,000
TOTAL EXPENDITURES		\$ 654,157	\$ 720,861	\$ 957,620	\$ 1,008,410	\$ 873,510

5-YEAR CAPITAL EQUIPMENT/IMPROVEMENT PROGRAM W&S RECLAIMED WATER PRODUCTION

EXP CODE	CLASSIFICATION	FY 20-21	FY 21-22	FY 22-23	FY 23-24	FY 24-25
46299	<i>Building Improvements</i>					
	Structural Maintenance & Repair (R&R)	10,000	10,000	10,000	10,000	10,000
	TOTAL	10,000	10,000	10,000	10,000	10,000
46399	<i>Improvements Other than Buildings</i>					
	Equipment Maintenance & Repair	10,000	10,000	10,000	10,000	10,000
	Equipment Upgrades (R&R)	10,000	10,000	10,000	10,000	10,000
	Rebuild Reclaim Transfer Pumps (2)	50,000	50,000	-	-	-
	Reclaim Transfer Pumps VFD (3)	16,000	-	-	-	-
	TOTAL	86,000	70,000	20,000	20,000	20,000

DIVISION TOTAL \$ 96,000 \$ 80,000 \$ 30,000 \$ 30,000 \$ 30,000

PUBLIC WORKS – WATER POLLUTION CONTROL

IT IS THE MISSION OF WATER POLLUTION CONTROL TO

protect public health and the environment by operating and maintaining the wastewater treatment plant at its highest efficiency. Comply with regulatory requirements and produce high quality water for beneficial reuse. Be innovative and creative to hold cost to a minimum.

DESCRIPTION

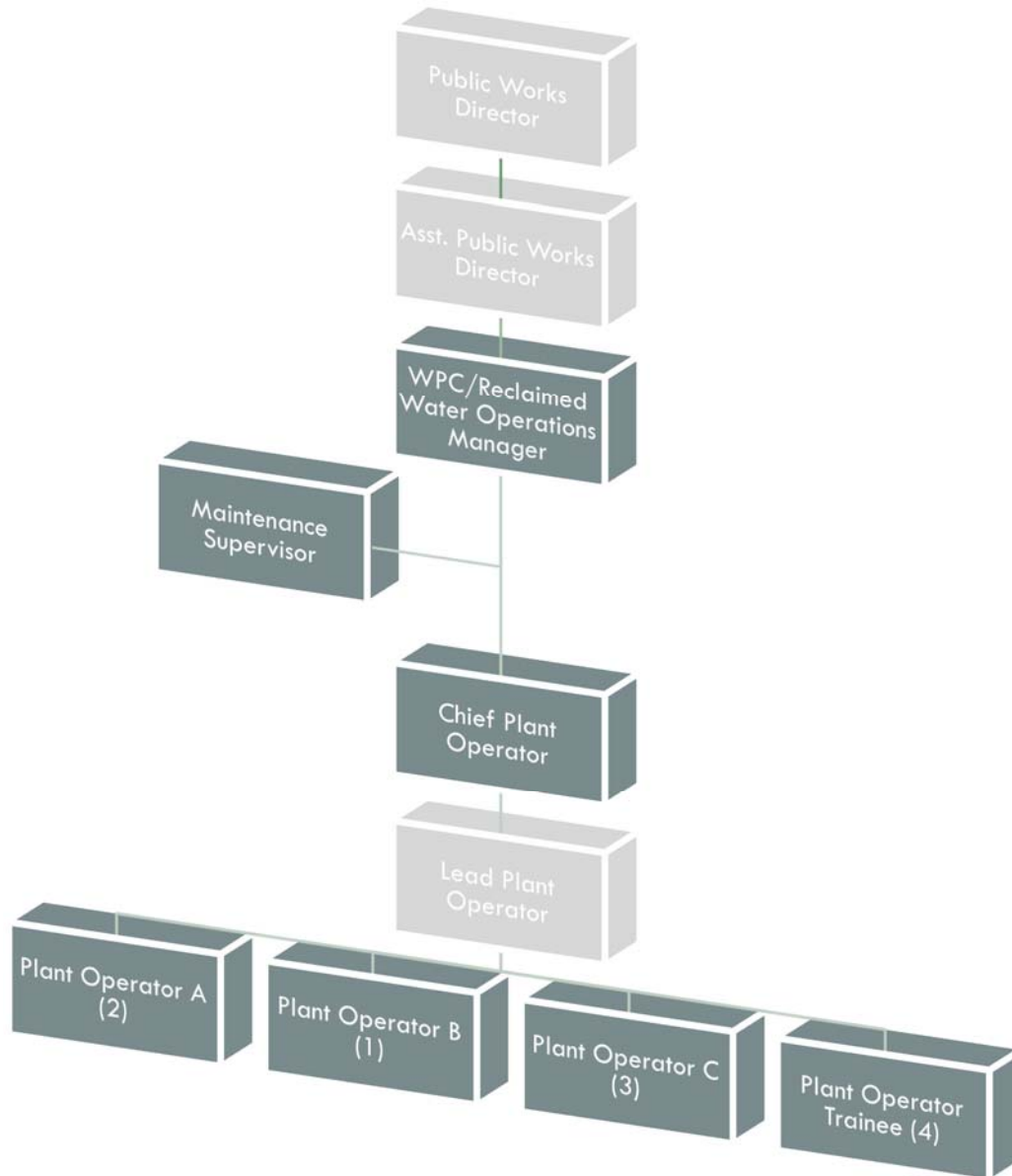
The Reclaimed Water Production Division is responsible for the operation of the wastewater treatment plant and producing and providing reclaimed water for beneficial reuse.

ACCOMPLISHMENTS OF FY20

- Staff completed numerous CIP projects and upgrades to improve plant performance and reliability
- Treated 1.9 billion gallons of wastewater to near drinking water standards for beneficial reuse
- Over 99% efficiency with no permit violations
- Completed over 3,000 work orders

FY21 INITIATIVES

- To supply and produce high quality reclaimed water for beneficial reuse in accordance with DEP rules:
 - Continue to seek out energy saving technologies
 - Be creative and innovative in implementing process improvements
 - Complete weekly work orders to maintain equipment that is vital to the process and DEP compliance
- Permits:
 - Compliance with the Administrative Order in accordance with our DEP Operating permit
- Capital Projects:
 - Install motor and gear box on Aeration Equipment #1-#3
 - Install Waste Activated Sludge Pump #2
 - Emergency/Backup Pump used for multi-use applications



Authorized Personnel – Full-time Equivalent			
Position/Title	FY18-19	FY19-20	FY20-21
WPC/Reclaimed Water Operations Manager	1	1	1
Chief Plant Operator	1	1	1
Plant Operator A	1	1	2
Plant Operator B	2	2	1
Plant Operator C	3	3	3
Plant Operator Trainee	4	4	4
Maintenance Supervisor	1	1	1
Total	13	13	13

W&S WATER POLLUTION CONTROL

401112					AMENDED	BUDGET
EXP		ACTUAL	ACTUAL	ESTIMATE	BUDGET	AMOUNT
CODE	CLASSIFICATION	FY17-18	FY18-19	FY19-20	FY19-20	FY20-21
41112	Division Head Salaries	70,043	71,412	72,340	72,340	73,010
41299	Regular Full-Time Wages	433,093	466,223	483,870	483,870	488,030
41411	Overtime Wages	31,910	42,177	26,520	26,520	26,750
41511	Employee Incentives	600	-	-	-	-
41522	Education Incentive Pay	575	600	600	600	600
41527	Standby Time	11,871	12,255	12,490	12,490	12,800
41529	Meal Allowance	90	87	360	360	630
42111	Social Security Matching	40,777	43,413	45,710	45,710	46,040
42211	Florida Retirement System	38,287	43,527	41,610	41,610	42,870
42214	Defined Contribution Plan	8,534	8,985	9,230	9,230	9,450
42311	Health Insurance	86,826	98,128	108,000	108,000	113,230
42312	Life Insurance	251	234	740	740	780
42313	Accidental Death & Disab Insurance	31	30	300	300	390
42422	Workers Comp - Sewage Disp/Plant/Oper/Drivers (7580)	22,742	16,877	24,910	24,910	20,640
42432	Workers Comp - Municipal Class (9410)	5,162	4,747	1,790	1,790	1,920
TOTAL PERSONNEL SERVICES		\$ 750,792	\$ 808,695	\$ 828,470	\$ 828,470	\$ 837,140
43129	Engineering Services - Misc	10,536	19,679	25,000	70,000	50,000
43199	Professional Services - Misc	-	-	5,000	5,000	5,000
43412	Pest Control Services	904	935	900	420	950
43438	Lab Test	1,343	560	12,000	12,000	12,000
43497	Contractual Services - Orangewood	-	17,590	40,000	30,000	40,000
43499	Contractual Services - Misc	14,855	13,202	6,500	6,500	6,500
44011	Travel & Training	2,125	2,440	1,500	3,200	4,000
44121	Telephone - Local	1,435	1,619	1,620	1,100	1,620
44134	Data Lines	4,446	4,869	5,000	4,680	5,000
44141	Pager Services	140	140	140	140	-
44211	Postage	65	314	130	130	130
44221	Freight Express Charges	-	-	300	300	300
44311	Electric - City Facilities	203,854	223,304	315,000	315,000	315,000
44316	Electric - Orangewood	-	4,491	9,000	7,000	9,000
44331	Trash Removal	7,759	8,119	10,000	10,000	10,000
44351	Water & Sewer - City	42,713	44,533	43,000	27,500	43,000
44361	Sludge Removal	347,886	455,569	430,000	430,000	430,000
44362	Sludge Removal - Orangewood	-	5,762	14,000	14,000	14,000
44373	Street Light Fee	270	273	280	280	280
44381	Stormwater Assessment	2,721	2,749	2,750	2,750	2,750
44419	Rent - Equipment/Software	-	1,735	2,000	2,000	2,000
44511	Liability Insurance - Comp. General	9,098	9,909	10,850	10,850	10,850
44521	Building & Contents Insurance	129,269	138,130	138,340	138,340	138,340
44522	Pollution Insurance	8,553	7,008	7,000	7,000	7,000
44523	Automobile & Truck Insurance	3,232	3,238	3,200	3,200	3,200
44525	Flood Insurance	11,637	12,208	13,900	13,900	13,900
44611	Maintenance & Repairs - Bldg & Grounds	72,852	84,732	98,250	98,250	98,250
44621	Maintenance & Repairs - Equipment	9,471	10,851	12,280	12,280	12,280
44623	Maintenance & Repairs - Copiers	-	365	510	510	510
44631	Maintenance & Repairs - Central Garage	5,010	3,480	4,700	4,700	4,700
44983	Permit Fees	14,028	7,350	12,000	12,000	12,000

W&S WATER POLLUTION CONTROL

401112 EXP CODE	CLASSIFICATION	ACTUAL FY17-18	ACTUAL FY18-19	ESTIMATE FY19-20	AMENDED BUDGET FY19-20	BUDGET AMOUNT FY20-21
45111	Office Supplies - General	1,492	1,116	1,500	1,500	1,500
45141	Small Tools & Implements	2,026	2,051	2,000	2,000	2,000
45211	Fuel	16,540	16,222	20,000	25,000	20,000
45221	Chemicals	108,957	111,936	120,000	120,000	120,000
45222	Laboratory Supplies	8,479	6,626	10,000	10,000	10,000
45223	Chemicals - Orangewood	-	4,828	13,000	13,000	13,000
45231	Clothing & Apparel	3,354	3,088	3,480	3,480	3,480
45243	Computer/Operating Supply	7,388	5,487	5,600	5,600	5,600
45247	First Aid Supplies	204	123	400	400	400
45251	Janitorial Supplies	3,192	4,675	3,800	3,800	3,800
45289	Automotive Parts	10,810	17,470	10,000	10,000	10,000
45299	Operating Supplies - Misc	3,439	3,373	3,000	3,000	3,000
45411	Dues & Memberships	229	675	1,300	1,300	1,300
45461	Books & Publications	365	-	150	150	150
TOTAL OPERATING		\$ 1,070,677	\$ 1,262,824	\$ 1,419,380	\$ 1,442,260	\$ 1,446,790
46299	Building Improvements	-	-	20,000	20,000	20,000
46399	Improvements Other Than Bldg - Misc	-	-	303,000	303,000	259,000
46415	Trucks & Trailers	-	-	15,700	15,700	9,500
TOTAL CAPITAL		\$ -	\$ -	\$ 338,700	\$ 338,700	\$ 288,500

TOTAL EXPENDITURES **\$ 1,821,469** **\$ 2,071,519** **\$ 2,586,550** **\$ 2,609,430** **\$ 2,572,430**

5-YEAR CAPITAL EQUIPMENT/IMPROVEMENT PROGRAM W&S WATER POLLUTION CONTROL

EXP CODE	CLASSIFICATION	FY 20-21	FY 21-22	FY 22-23	FY 23-24	FY 24-25
46299	<i>Building Improvements</i>					
	Structural Maintenance & Repair (R&R)	20,000	20,000	20,000	20,000	20,000
	TOTAL	20,000	20,000	20,000	20,000	20,000
46399	<i>Improvements Other than Buildings</i>					
	Standby Power Equipment (R&R)	20,000	20,000	20,000	20,000	20,000
	Equipment Maintenance & Repair	15,000	15,000	15,000	15,000	15,000
	Process Equipment (R&R)	40,000	40,000	40,000	20,000	20,000
	Replace Aerator Gear Boxes (1)	100,000	100,000	100,000	100,000	-
	Waste Activated Sludge Pump (1)	17,000	-	-	-	-
	6" Diesel Engine-Driven Pump	67,000	-	-	-	-
	Replace Clarifiers Rake Structure (2)	-	90,000	90,000	-	-
	TOTAL	259,000	265,000	265,000	155,000	55,000
46415	<i>Trucks & Trailers</i>					
	Mack Truck Tractor Trailer #9 (R&R)	3,000	3,000	3,000	3,000	3,000
	Ford F550 Flat Bed w/ Knuckle Crane #46 (R&R)	6,500	6,500	6,500	6,500	6,500
	TOTAL	9,500	9,500	9,500	9,500	9,500

DIVISION TOTAL \$ 288,500 \$ 294,500 \$ 294,500 \$ 184,500 \$ 84,500

PUBLIC WORKS – SEWER COLLECTION

IT IS THE MISSION OF SEWER COLLECTION TO

maintain and upgrade the City's sewer collection system whenever and wherever possible. This division strives to remain current with today's technology and to implement that technology into our system and everyday routine. Most importantly, great effort is made to ensure that all staff are trained and prepared for any event that might jeopardize the integrity of the City's sewer collection system. The highest level of service and professionalism is expected and shall be maintained.

DESCRIPTION

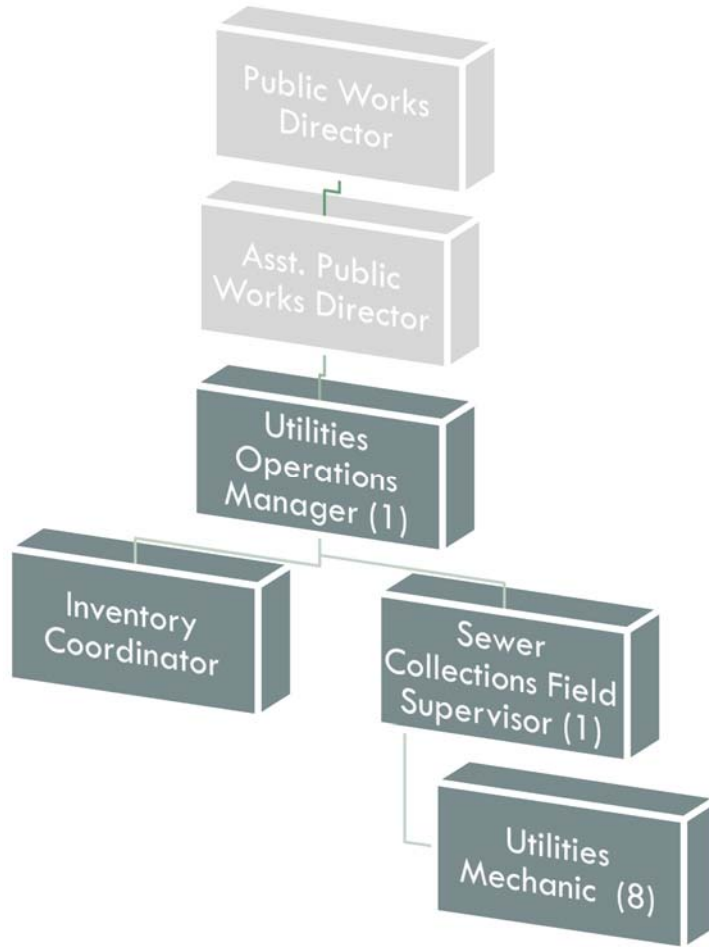
The Sewer Collection Division maintains and repairs over 8,000 sewer services, including clearing of blockages and repair and replacement of defective sewer services. Sewer collections is also responsible for the maintenance of sewer force mains, ranging in size from 4-16 inches long, and 65 lift stations that these lines pump to.

ACCOMPLISHMENTS OF FY20

- Completed annual gravity sewer system inspection and lining to control/prevent deterioration of our sewer system. Sewer crews will continue to clean, inspect and record our sewer system to find areas in need of lining.
- Completed the smoke testing project, which identified areas of inflow/infiltration of stormwater into the sanitary sewer system
- Repaired and replaced pumps in the lift stations and created a pump test between Wilo and Flygt to add to City standard
- Continued training/education by conducting training on Bucket Truck Training, Asbestos, and collections, all of which will prove to be useful to City staff.

FY21 INITIATIVES

- Complete Communication Upgrades:
 - SCADA Upgrades, including finishing construction of the new 100' tower at the Public Works Operation Center
 - Install antenna towers at each lift station
 - Lift station panel upgrades with new PLC's
 - SCADA Room "Command Center" computer and monitor set up
- Complete Inflow / Infiltration Phase 2:
 - Repair broken cleanouts
 - Complete the installation of manhole pans to prevent inflow
 - Remove storm lines that have been connected to the system
- Continue Sanitary Sewer Pipe Lining:
 - Cleaning and camera work of the lines will be done in coordination with this project
 - Identify deficient sanitary sewer lines
 - Prioritize deficient sanitary sewer lines and create a data base
 - Complete bid documents, specification sheets, and oversee the project implementation
- Complete Submersible Pump Tests:
 - Wilo and Flygt pump lift station pilot test first year conclusion
 - Monitor the power usage for efficiency
 - Keep a very detailed log of the pumps performance and issues
 - Make an informed decision for the city specs for future use



Authorized Personnel – Full-time Equivalent			
Position/Title	FY18-19	FY19-20	FY20-21
Utilities Operations Manager	1	1	1
Sewer Collections Field Supervisor	1	1	1
Utilities Mechanic I	6	8	8
Inventory Coordinator	1	1	1
Total	9	11	11

W&S SEWER COLLECTION

401113					AMENDED	BUDGET
EXP		ACTUAL	ACTUAL	ESTIMATE	BUDGET	AMOUNT
CODE	CLASSIFICATION	FY17-18	FY18-19	FY19-20	FY19-20	FY20-21
41210	Regular Exempt Salaries	40,426	43,384	44,750	44,720	45,840
41299	Regular Full-Time Wages	175,491	181,818	250,000	291,200	294,280
41411	Overtime Wages	21,226	36,315	40,000	63,000	50,000
41511	Employee Incentives	350	-	-	-	-
41522	Education Incentive Pay	575	600	600	600	600
41527	Standby Time	10,457	11,757	11,900	11,900	12,030
41529	Meal Allowance	30	150	-	-	380
42111	Social Security Matching	17,939	20,407	25,000	28,770	29,140
42211	Florida Retirement System	20,456	23,598	30,000	33,930	35,220
42311	Health Insurance	50,874	37,647	50,000	91,390	95,810
42312	Life Insurance	167	140	400	630	660
42313	Accidental Death & Disab Insurance	20	18	200	250	330
42422	Workers Comp - Sewage Disp/Plant/Oper/Drivers (7580)	11,255	16,920	13,000	14,770	14,980
42435	Workers Comp - Storage Warehouse Inventory (8292)	1,104	1,639	1,420	1,420	2,000
TOTAL PERSONNEL SERVICES		\$ 350,370	\$ 374,393	\$ 467,270	\$ 582,580	\$ 581,270
43199	Professional Services - Misc	-	-	35,000	35,000	230,000
43432	Inspector Services	-	-	800	800	800
43499	Contractual Services - Misc	10,646	14,367	22,000	22,000	22,000
44011	Travel & Training	1,648	594	4,050	4,050	4,100
44121	Telephone - Local	5,705	5,590	3,240	3,240	5,500
44134	Data Lines	3,034	3,297	4,000	5,000	4,000
44141	Pager Services	177	177	80	80	-
44211	Postage	80	322	350	350	350
44311	Electric - City Facilities	87,053	93,273	80,000	80,000	90,000
44331	Trash Removal	7,569	9,086	12,000	12,000	10,000
44381	Stormwater Assessment	51	51	60	60	60
44419	Rent - Equipment/Software	581	228	2,000	2,000	2,000
44482	Lease - Lift Station	-	17,700	36,000	36,000	36,000
44611	Maintenance & Repairs - Bldg & Grounds	26,154	31,207	31,391	140,000	140,000
44621	Maintenance & Repairs - Equipment	184	2,658	2,658	14,000	14,000
44631	Maintenance & Repairs - Central Garage	18,240	5,460	20,000	20,000	20,000
45111	Office Supplies - General	540	247	247	900	500
45141	Small Tools & Implements	3,789	9,457	6,850	6,850	6,850
45211	Fuel	32,419	23,605	40,000	40,000	40,000
45221	Chemicals	-	15	5,000	5,000	5,000
45225	Software License Support	3,410	620	5,000	5,000	5,000
45231	Clothing & Apparel	2,714	2,609	3,300	3,300	3,300
45243	Computer/Operating Supply	69	2,229	1,500	1,500	500
45247	First Aid Supplies	85	7	300	300	300
45272	Pipe	1,393	554	7,000	7,000	7,000
45274	Valves & Clamps	1,388	3,802	20,000	20,000	20,000
45289	Automotive Parts	22,770	19,625	17,000	17,000	17,000
45252	Operating Supplies - Misc	13,245	15,909	15,000	15,000	15,000
45341	Sod/Seed	35	168	3,000	3,000	3,000
45399	Road Materials - Misc	1,120	3,027	6,000	6,000	6,000
45411	Dues & Memberships	260	30	300	300	300

W&S SEWER COLLECTION

401113 EXP CODE	CLASSIFICATION	ACTUAL FY17-18	ACTUAL FY18-19	ESTIMATE FY19-20	AMENDED BUDGET FY19-20	BUDGET AMOUNT FY20-21
45461	Books & Publications	-	213	200	200	200
TOTAL OPERATING		\$ 244,359	\$ 266,127	\$ 384,326	\$ 505,930	\$ 708,760
46399	Improvements Other Than Bldg - Misc	-	-	85,129	85,130	40,000
46415	Trucks & Trailers	-	-	21,845	21,850	94,380
46416	Heavy Equipment	-	-	111,000	111,000	60,000
46417	Communications Equipment	-	-	85,000	85,000	50,000
46431	Special Purpose Equipment	4,553	-	-	-	-
TOTAL CAPITAL		\$ 4,553	\$ -	\$ 302,974	\$ 302,980	\$ 244,380

TOTAL EXPENDITURES \$ 599,282 \$ 640,520 \$ 1,154,570 \$ 1,391,490 \$ 1,534,410

5-YEAR CAPITAL EQUIPMENT/IMPROVEMENT PROGRAM W&S SEWER COLLECTION

EXP CODE	CLASSIFICATION	FY 20-21	FY 21-22	FY 22-23	FY 23-24	FY 24-25
46399	<i>Improvements Other than Buildings</i>					
	Lift Stations Control Panel Upgrades (2)	25,000	25,000	25,000	25,000	25,000
	Equipment Maintenance & Repairs	15,000	15,000	15,000	15,000	15,000
	TOTAL	40,000	40,000	40,000	40,000	40,000
46413	<i>Data Processing Equipment</i>					
	Laptop	-	1,600	-	-	-
	TOTAL	-	1,600	-	-	-
46415	<i>Trucks and Trailers</i>					
	Vacuum Sewer Cleaner to Replace #127 (Lease Payment)	89,380	89,380	50,000	50,000	50,000
	Utility Line CCTV Inspection Truck (R&R)	5,000	5,000	5,000	5,000	5,000
	TOTAL	94,380	94,380	208,280	55,000	55,000
46416	<i>Heavy Equipment</i>					
	Standby Power Equipment (R&R)	6,500	6,500	6,500	6,500	6,500
	New Holland Backhoe #27 (R&R)	26,000	80,000 (a)	5,000	5,000	5,000
	480V Mobile Standby Generator Trailer (R&R)	11,000	11,000	11,000	11,000	11,000
	Mid-size Excavator to Replace #105 (R&R)	7,500	7,500	7,500	7,500	7,500
	JCB Mid-Excavator 55Z #SE9149 (R&R)	9,000	9,000	9,000	9,000	9,000
	TOTAL	60,000	114,000	39,000	39,000	39,000
46417	<i>Communication Equipment</i>					
	SCADA Comm. System Upgrades	50,000	-	-	-	-
	TOTAL	50,000	-	-	-	-

DIVISION TOTAL \$ 244,380 \$ 249,980 \$ 287,280 \$ 134,000 \$ 134,000

(a) Year of Acquisition (\$26,000 in R&R)

PUBLIC WORKS - CENTRAL GARAGE

IT IS THE MISSION OF CENTRAL GARAGE TO

maintain the City's Fleet of vehicles and equipment in a dependable, safe, and environmentally sound condition. All of which includes a scheduled maintenance program to create a proactive approach in keeping maintenance cost down in an attempt to avoid major repairs.

DESCRIPTION

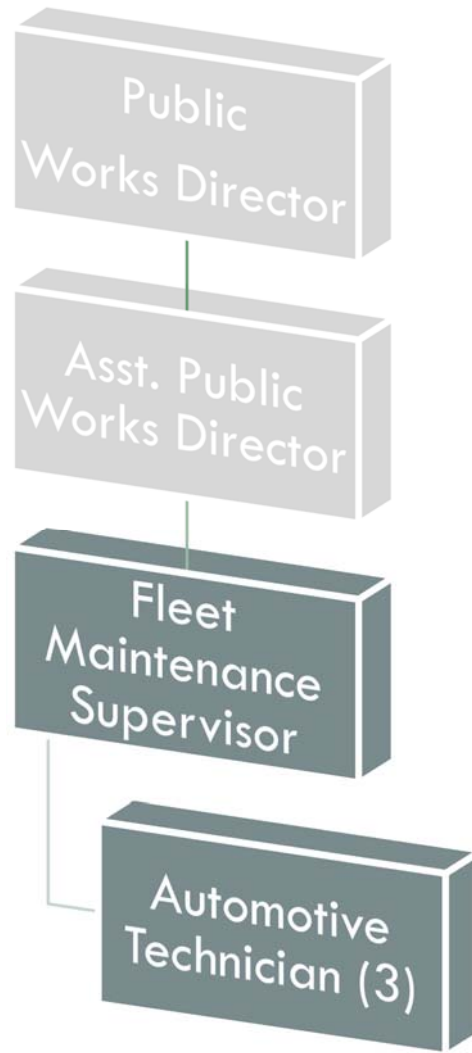
The Central Garage Division provides acquisition, disposal, preventative maintenance, and major and minor repairs for the City's motor vehicle fleet and equipment. The Division performs these functions on a variety of vehicle types, including police vehicles and fire apparatus.

ACCOMPLISHMENTS OF FY20

- Capital Improvements:
 - Completed Building Needs Assessment
 - Assisted in identifying building deficiencies and proposed upgrades and yard set up for vehicles and equipment storage
- Training & Schooling: Employees obtained additional training for various equipment in an effort to remain up to date with the latest repair technology and to improve on testing techniques.

FY21 INITIATIVES

- Fleet Inventory:
 - Partner with Enterprise to implement vehicle lease program
- Training:
 - FEMA training for all personnel
 - Electric and Hybrid Vehicles
 - ASE testing and recertification for personnel
 - Emergency vehicle training and certification for personnel
- Fleet Operational Improvements:
 - Complete implementation of new Tyler Technologies software
- Environmental Improvements:
 - Switch to as many environmentally friendly chemicals as possible
 - Convert the Fleet, when possible, to efficient environmentally friendly vehicles



Authorized Personnel – Full-time Equivalent			
Position/Title	FY18-19	FY19-20	FY20-21
Fleet Maintenance Supervisor	1	1	1
Automotive Technician	3	3	3
Total	4	4	4

CENTRAL GARAGE

501591					AMENDED	BUDGET
EXP		ACTUAL	ACTUAL	ESTIMATE	BUDGET	AMOUNT
CODE	CLASSIFICATION	FY17-18	FY18-19	FY19-20	FY19-20	FY20-21
41299	Regular Full-Time Wages	162,249	152,978	153,966	170,690	177,400
41411	Overtime Wages	142	2,806	2,474	1,040	1,020
41511	Employee Incentives	200	-	-	-	-
41529	Meal Allowance	-	-	-	250	250
42111	Social Security Matching	12,031	11,640	11,687	12,940	13,700
42211	Florida Retirement System	13,665	10,769	12,839	14,010	15,110
42311	Health Insurance	30,713	20,238	20,671	33,230	34,840
42312	Life Insurance	85	56	60	230	240
42313	Accidental Death & Disab Insurance	11	7	8	90	120
42425	Workers Comp - Auto Repair Shop/Parts Dept (8391)	24,096	6,294	6,294	6,570	7,310
TOTAL PERSONNEL SERVICES		\$ 243,192	\$ 204,788	\$ 207,999	\$ 239,050	\$ 249,990
43434	Wrecker Services	2,853	2,720	2,720	3,000	3,500
43436	Paint & Body Work	7,716	14,500	14,500	10,000	10,000
43437	Auto Repair & Testing	32,021	34,693	34,693	40,000	35,000
43440	Paint & Body Work - PD	32,948	28,923	28,923	40,000	35,000
43446	Parts - Resale	219,405	230,429	155,000	155,000	155,000
43447	Fuel - Resale	241,475	246,059	185,000	185,000	185,000
43499	Contractual Services - Misc	2,336	4,285	4,285	1,500	1,500
44011	Travel & Training	-	1,521	1,521	5,500	4,000
44121	Telephone - Local	1,890	2,334	2,334	2,350	2,150
44211	Postage	178	564	564	550	700
44419	Rent - Equipment/Software	-	-	-	200	200
44463	Lease - Automobiles & Trucks	-	-	2,750	2,750	2,750
44611	Maintenance & Repairs - Bldg & Grounds	759	5,345	10,000	10,000	10,000
44621	Maintenance & Repairs - Equipment	1,757	2,980	2,980	3,500	3,500
44631	Maintenance & Repairs - Central Garage	300	4,430	4,430	4,000	1,000
44983	Permit Fees	-	25	25	180	180
44999	Other Current Charges - Misc	531	1,192	153	-	-
45111	Office Supplies - General	160	160	160	500	500
45141	Small Tools & Implements	8,039	7,661	6,361	5,000	6,000
45211	Fuel	8,870	6,881	10,000	10,000	10,000
45225	Software License Support	950	950	950	2,000	3,500
45231	Clothing & Apparel	-	-	-	150	150
45232	Laundry Service	4,052	3,422	3,422	2,700	3,500
45243	Computer/Operating Supply	214	2,287	811	3,000	500
45247	First Aid Supplies	315	49	49	150	150
45251	Janitorial Supplies	1,098	828	828	250	1,000
45289	Automotive Parts	5,940	6,415	10,000	10,000	10,000
45298	Inventory Adjustments	(11,989)	1,056	6,648	1,000	1,000

CENTRAL GARAGE

501591 EXP CODE	CLASSIFICATION	ACTUAL FY17-18	ACTUAL FY18-19	ESTIMATE FY19-20	AMENDED BUDGET FY19-20	BUDGET AMOUNT FY20-21
45299	Operating Supplies - Misc	5,642	2,871	2,871	6,000	6,000
45411	Dues & Memberships	50	50	50	200	200
45461	Books & Publications	-	-	-	500	500
TOTAL OPERATING		\$ 567,510	\$ 612,630	\$ 492,028	\$ 504,980	\$ 492,480
46415	Trucks & Trailers	-	-	-	15,000	-
46431	Special Purpose Equipment	-	-	13,691	10,000	28,800
TOTAL CAPITAL		\$ -	\$ -	\$ 13,691	\$ 25,000	\$ 28,800

TOTAL EXPENDITURES \$ 810,702 \$ 817,418 \$ 713,718 \$ 769,030 \$ 771,270

5-YEAR CAPITAL EQUIPMENT/IMPROVEMENT PROGRAM CENTRAL GARAGE

EXP CODE	CLASSIFICATION	FY 20-21	FY 21-22	FY 22-23	FY 23-24	FY 24-25
46431	<i>Special Purpose Equipment</i>					
	7.5K lb. Rolling Jack	6,000	-	-	-	-
	Wheel Balancer	13,000	-	-	-	-
	Tire Changer Machine	5,000	-	-	-	-
	Portable Air Compressor	3,000	-	-	-	-
	Double Wall Diesel Fuel Tank	1,800	-	-	-	-
	Containment Tank Basins (2)	-	3,000	-	-	-
	Waste Oil Heater	-	-	7,000	-	-
	Compressor #1 - Main Shop Compressor	-	-	-	5,000	-
	Compressor #2 - Back Up Compressor	-	-	-	-	5,000
	Hot Hi-Pressure Washer (Steam Clean)	-	-	-	-	5,000
	Waste Oil Fuel Tank	-	-	-	-	3,500
	TOTAL	28,800	3,000	7,000	5,000	13,500

DIVISION TOTAL \$ 28,800 \$ 3,000 \$ 7,000 \$ 5,000 \$ 13,500