



A Visioning Exercise in Resilient Design: Main Street, New Port Richey

New Port Richey City Council Work Session Meeting
February 18, 2020

Sarah Vitale, AICP-C & Marshall Flynn
Tampa Bay Regional Planning Council



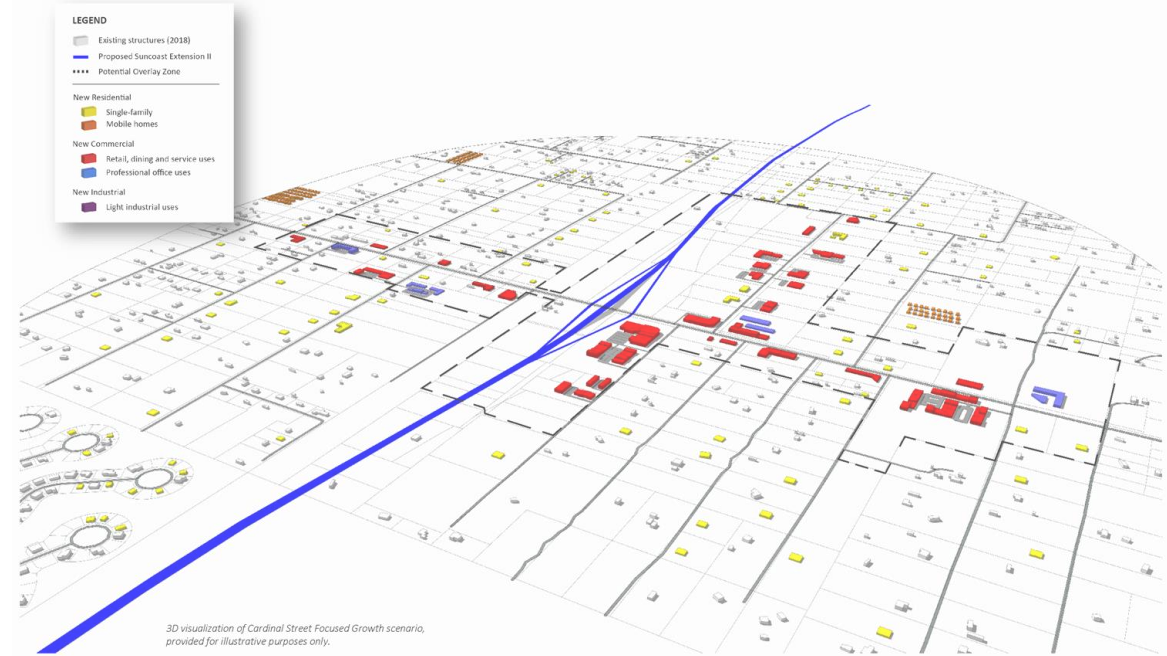
Agenda

- Visioning Process
- Main Street Today: SWOT
- Main Street “Rapid Redesign”
- Design Inspirations
- Next Steps / Discussion



What is Visioning?

- Seeing is believing
- Compare alternatives
- Test ideas, clarify direction
- Develop consensus



The 1st Step in an Evolving Process



Main Street Today



MAIN STREET

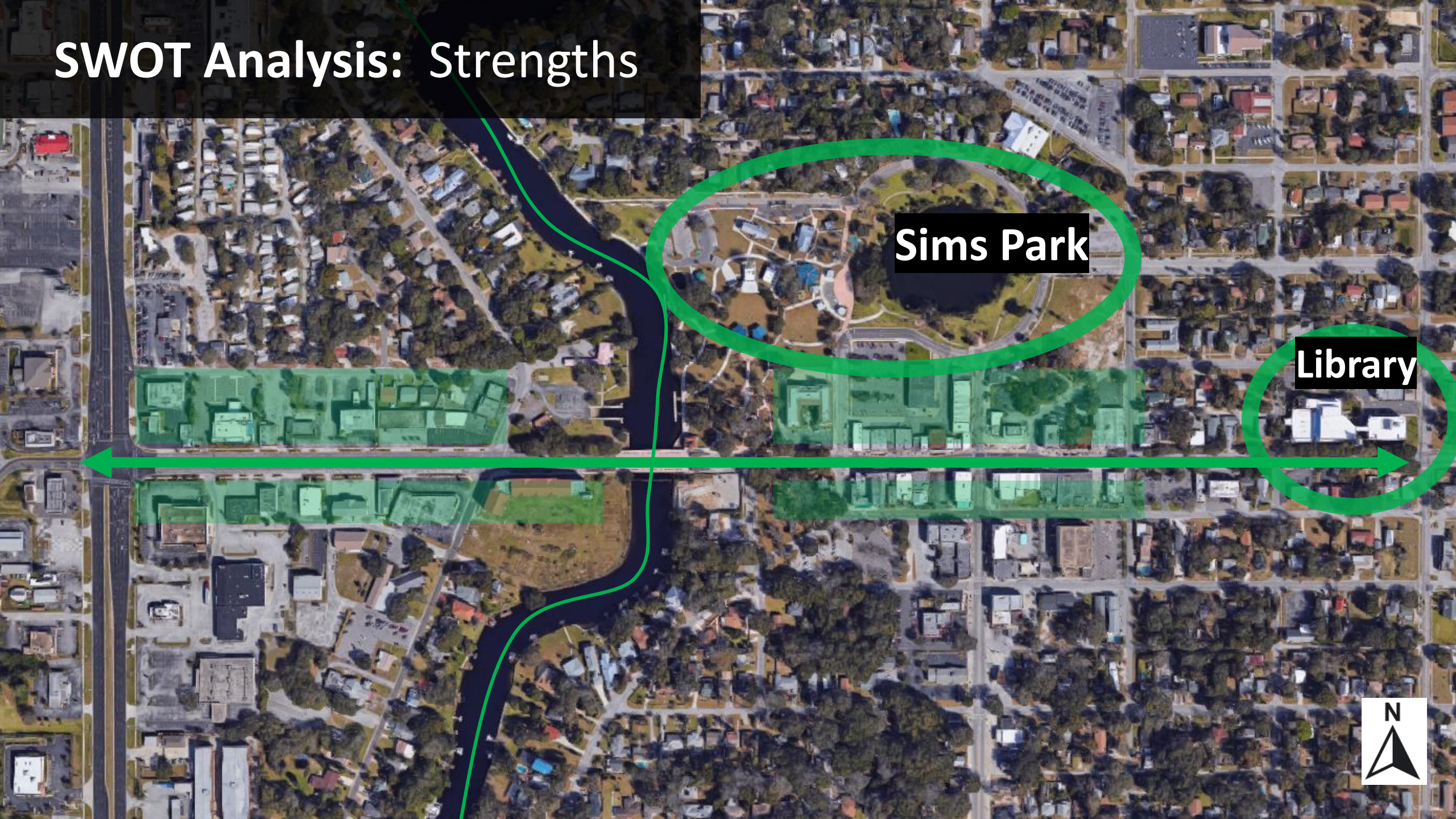
New Port Richey, FL



SWOT Analysis



SWOT Analysis: Strengths

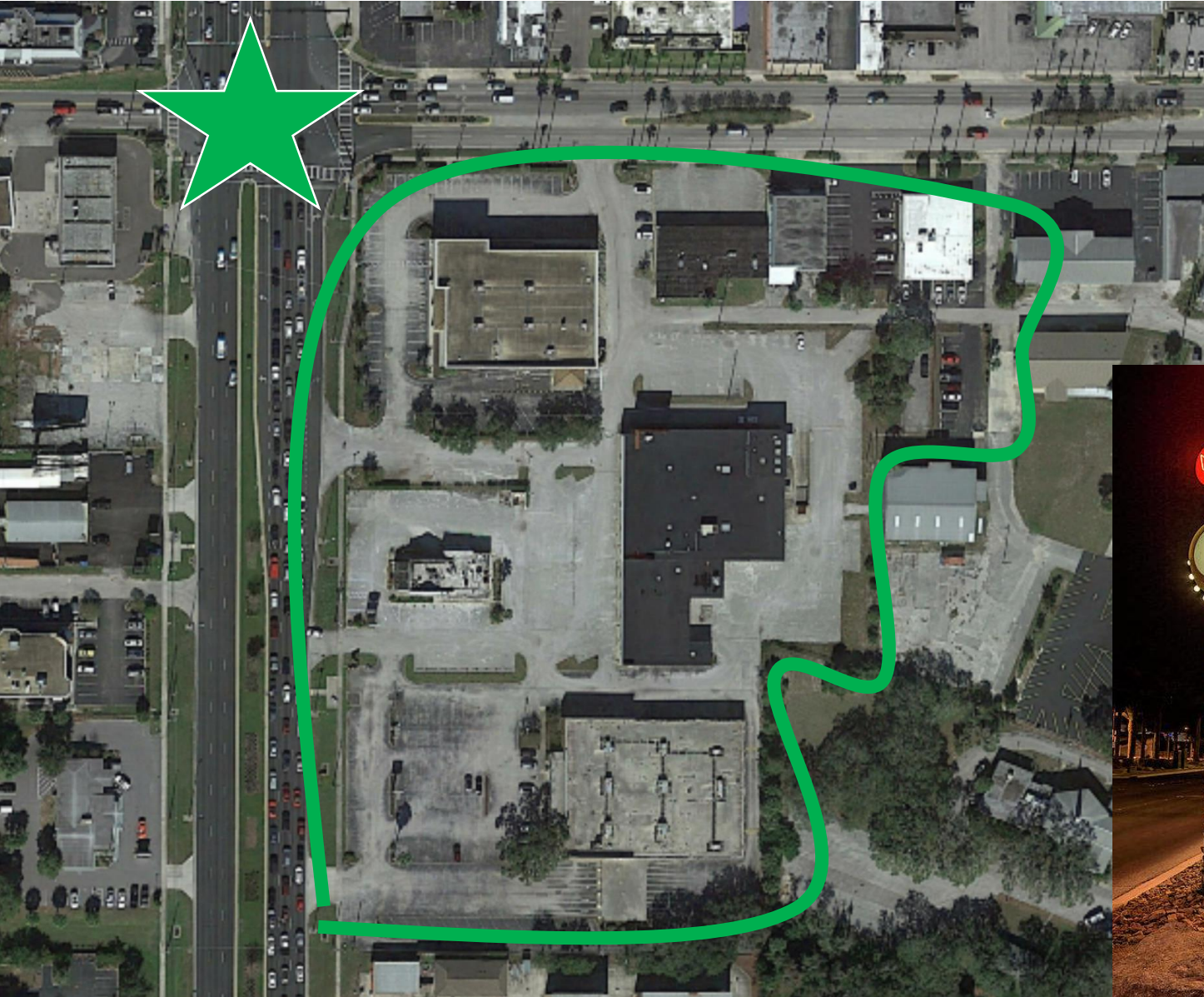


Sims Park

Library



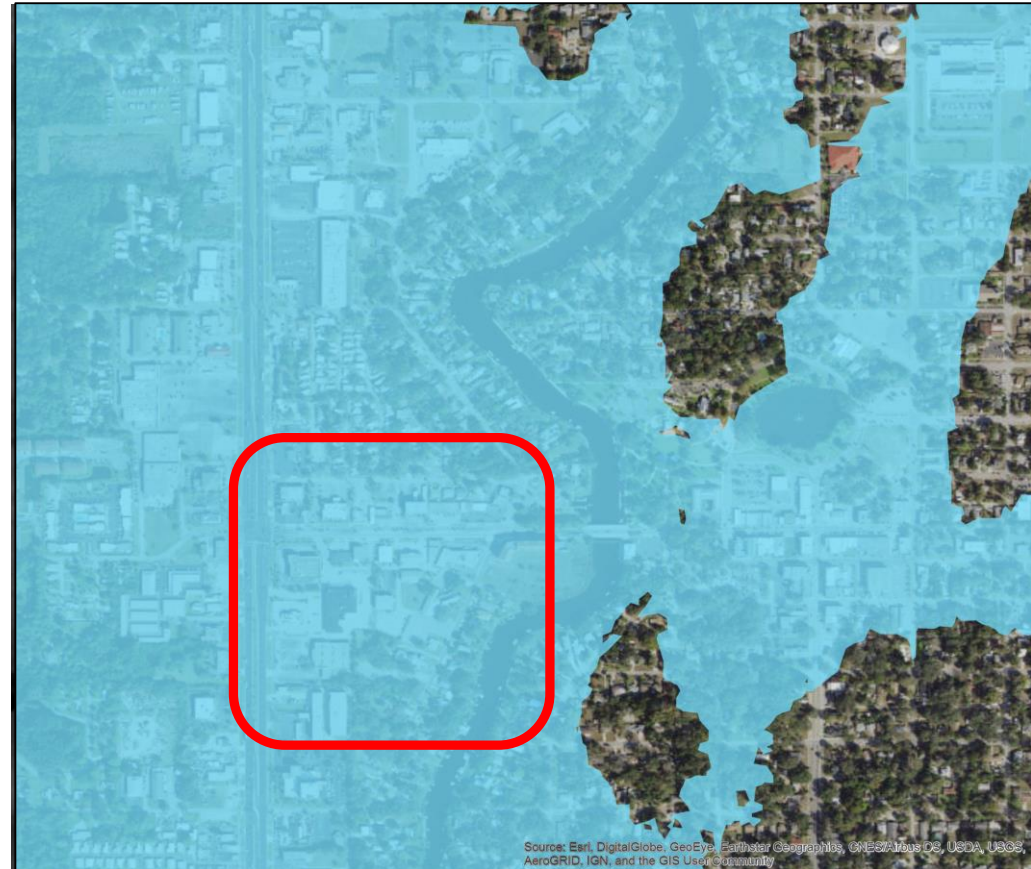
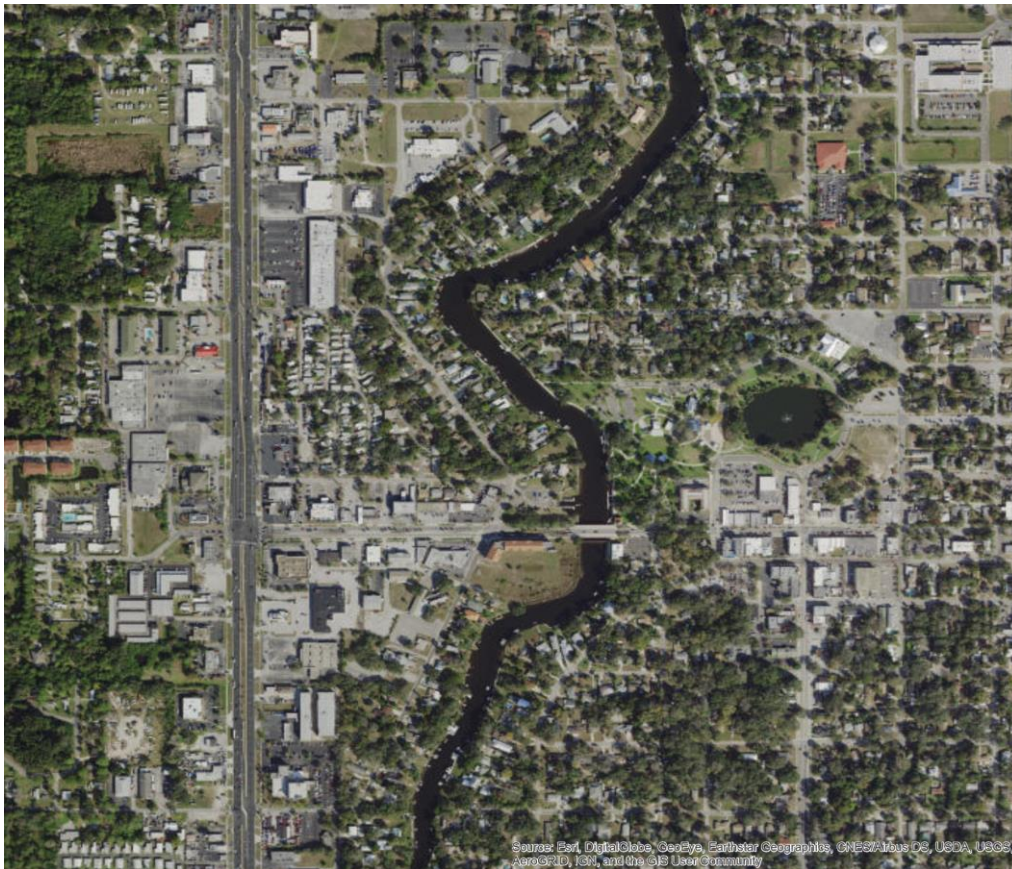
SWOT Analysis: Weaknesses



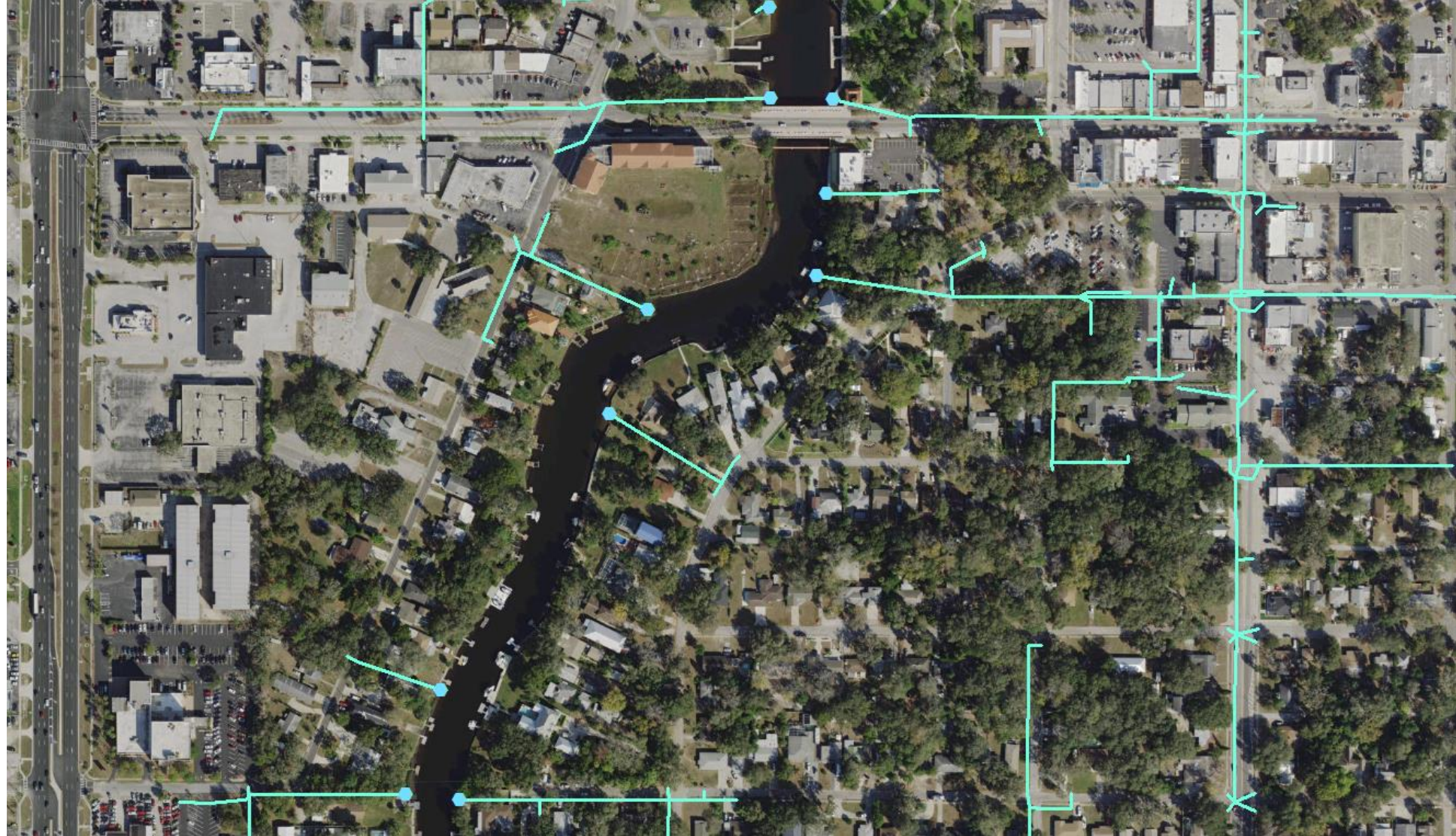
SWOT Analysis: Threats

- Inland flooding, storm surge, and sea level rise

*2045 SLR &
Cat 3 Surge*



SWOT Analysis: Threats



SWOT Analysis: Opportunities

- Peril of Flood requirement
 - CRAs and tax increment financing are tools to improve resilience
-

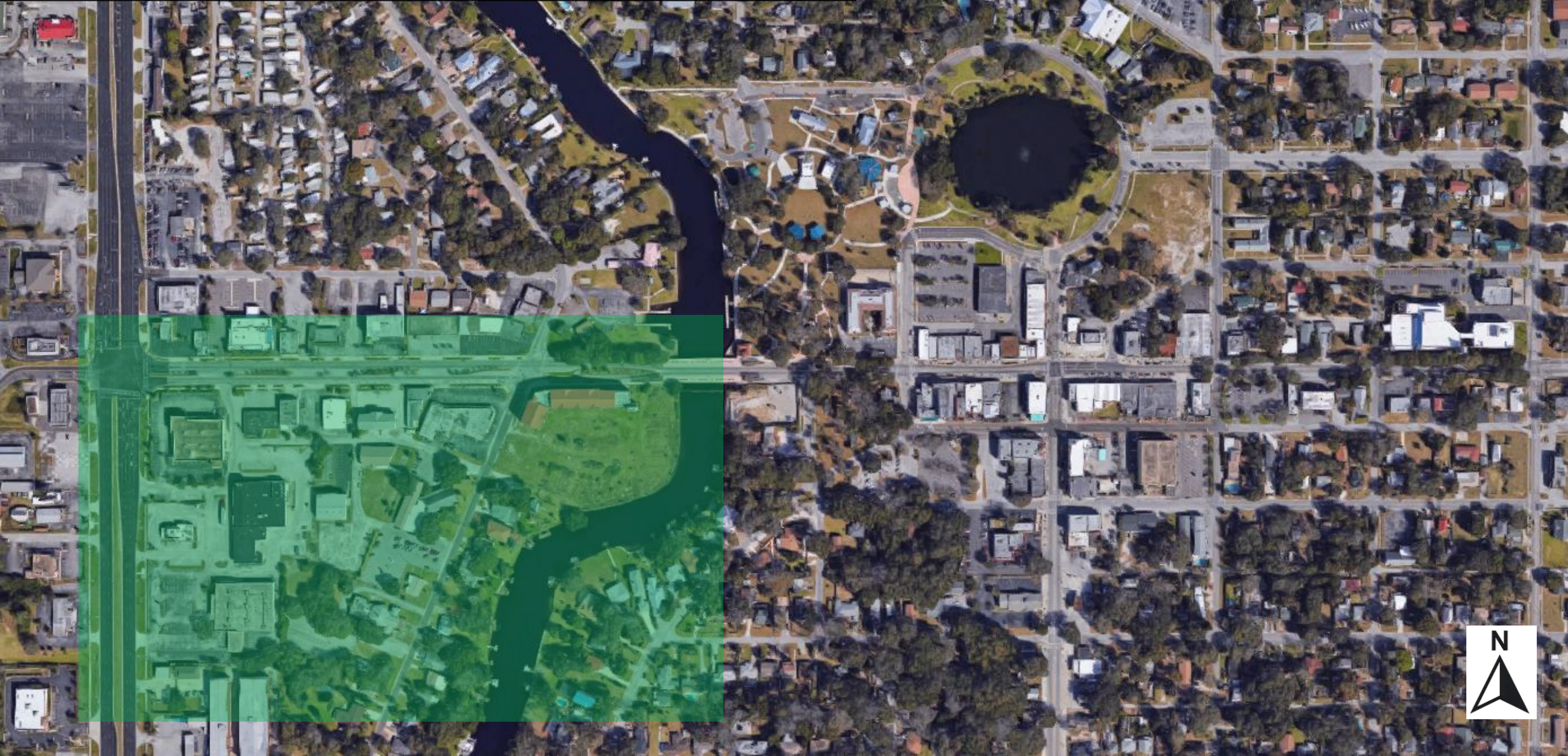
2015 Peril of Flood: F.S. §163.3178(2)(f)

(f) A **redevelopment component** ~~that which~~ outlines the principles that must ~~which shall~~ be used to eliminate inappropriate and unsafe development in the coastal areas when opportunities arise. The component must:

1. Include development and redevelopment principles, strategies, and engineering solutions that reduce the flood risk in coastal areas . . . from . . . **related impacts of sea-level rise.**
2. Encourage . . . the removal of coastal real property from [FEMA] flood zone designations.
3. **Site development techniques and best practices** [to] reduce [flood] losses [and] flood insurance claims.

[continued]

Main Street "Rapid Redesign"





Main St.

U.S. 19



MAIN ST.

US 19

**Mixed Use
Commercial**

**Pocket
Park**

**Mixed
Use
Com.**

**Existing
Com.**

**Mixed Use
Commercial + Residential**

Hotel

**Floodable
Public Park**

**Public
Boat Docks**

Residential

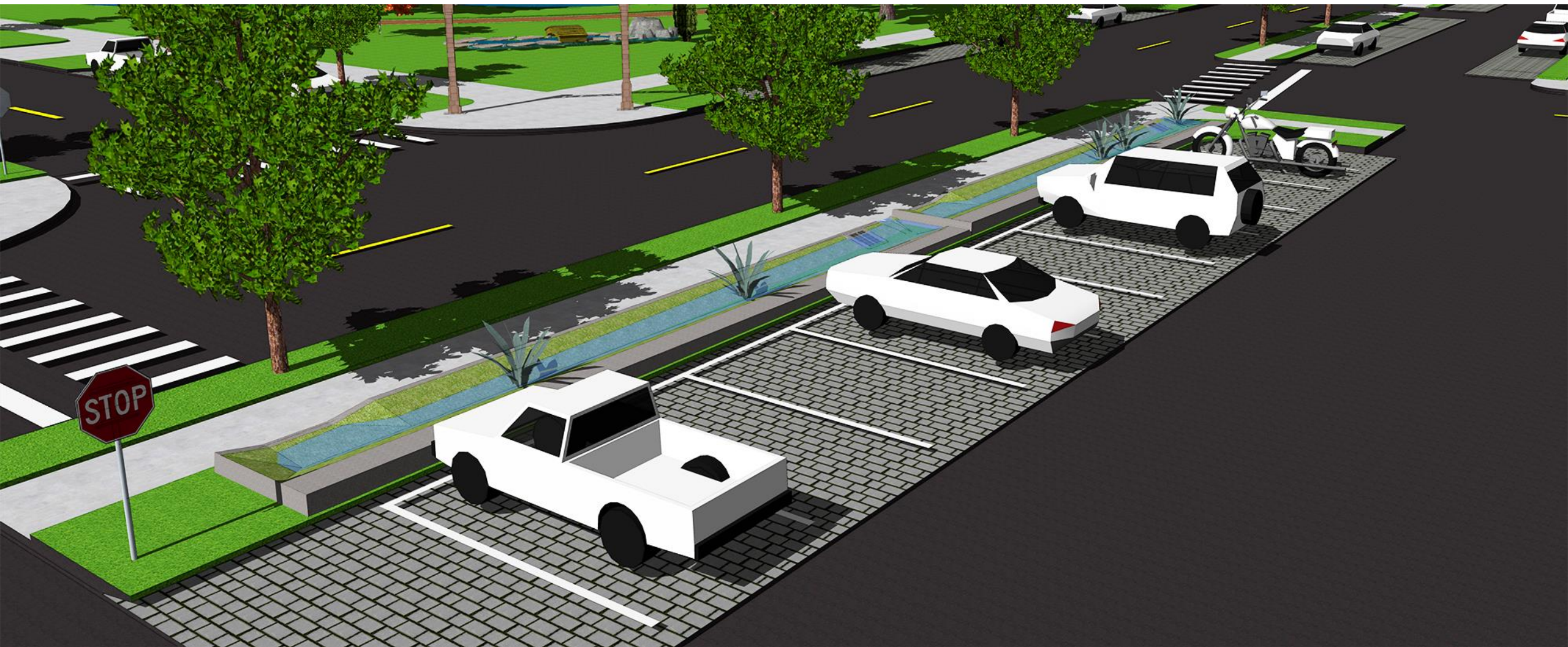
Main Street "Rapid Redesign"

















Rethinking Infrastructure: Turning challenges into opportunities



BLUE+GREEN INFRASTRUCTURES

LANDSCAPES THAT
CAPTURE STORMWATER
AND CLEAN AIR

- LARGE LAKE
- SMALLER RETENTION POND
- INFILTRATION PARK
- SWALES + INFILTRATION
MEDIANS
- ROAD-SIDE POND (ALONG
WIDE ROADS)

Cascades Park

LEGEND

- 1 Smokey Hollow Commemoration
- 2 Capital Cascades Trail
- 3 History Monuments
- 4 Smokey Hollow Pond
- 5 Korean War Memorial
- 6 Historic Smokey Hollow Barber Shop
- 7 St. Augustine Branch Stream Restoration
- 8 Discovery Garden
- 9 Meridian Plaza Signature Bridges
- 10 Capital City Amphitheater
- 11 Meridian Plaza
- 12 Cascades Fountain
- 13 Imagination Fountain
- 14 Historic Electric Building (Edison/Catalina Café)
- 15 Centennial Field Commemoration
- 16 Boca Chuba Pond
- 17 Historic Centennial Field Wall
- 18 Capital Cascades Pedestrian Bridge

- G1 Pensacola/Meridian Gate
- G2 Lafayette Gate
- G3 Gaines/Meridian Gate
- G4 Myers Park Gate
- G5 Bloxham/Gadsden Gate
- G6 Suwannee/Gadsden Gate
- G7 South Monroe Gate
- G8 Bloxham Gate

- - - Handicap Accessible Routes
- ≡ Stairs

PARK HOURS
Sunrise to sunset
except in lighted
areas and during
permitted events

PARK RULES
Defacing property,
littering, swimming,
unauthorized vendors
and unleashed dogs
are prohibited.



CITY OF TALLAHASSEE - LEON COUNTY FLORIDA
BLUEPRINT 2000
INTERGOVERNMENTAL AGENCY
& BEYOND

CITY OF
TALLAHASSEE





CASCADES

Increased Resilience to Flooding



Next Steps / Discussion

- What does the City want to accomplish for Main Street by 2025?
 - What types of development do you want to see for this site?
 - How can this development integrate resilient urban design?
 - How can visioning support your planning process?
-

Contact:

Sarah Vitale, AICP-C: sarah@tbrpc.org

Marshall Flynn: marsh@tbrpc.org

