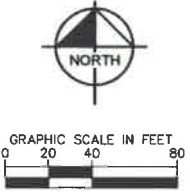
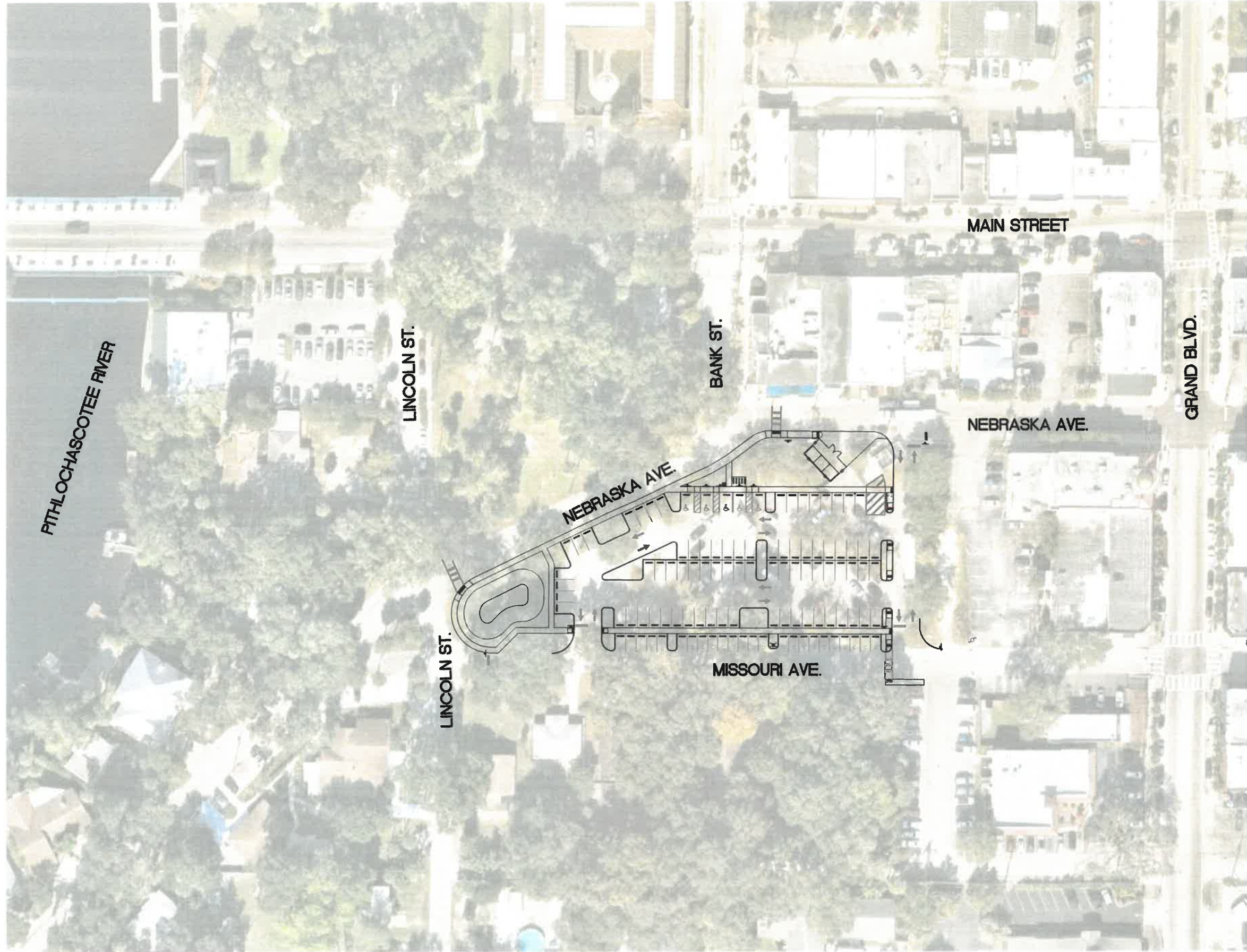


THE OFFICIAL RECORD OF THIS SHEET IS THE ELECTRONIC FILE DIGITALLY SIGNED AND SEALED UNDER RULE 61G15-23.004, F.A.C.

This document, together with the concepts and designs presented herein, is intended only for the specific purpose and client for which it was prepared. Review of and improper reliance on this document without written authorization and adaptation by Kimley-Horn and Associates, Inc. shall be without liability to Kimley-Horn and Associates, Inc.



Know what's below.
Call before you dig.

2019 NEBRASKA PARKING LOT IMPROVEMENTS		AERIAL LOCATION MAP		 © 2020 KIMLEY-HORN AND ASSOCIATES, INC. 100 PARK AVE., SUITE 200, FLEMINGSBURG, FL 32701 PHONE: 727-374-7300 WWW.KIMLEY-HORN.COM CA 00000985	
DATE	9/25/2020	SCALE AS SHOWN	DESIGN ENGINEER:	RYAN R. HOPPE, P.E.	
PROJECT NO.	148479010	DESIGNED BY	NEB		
SHEET NUMBER	C-101	DRAWN BY	BDD	P.E. NUMBER	79400
		CHECKED BY	DMD	DATE:	