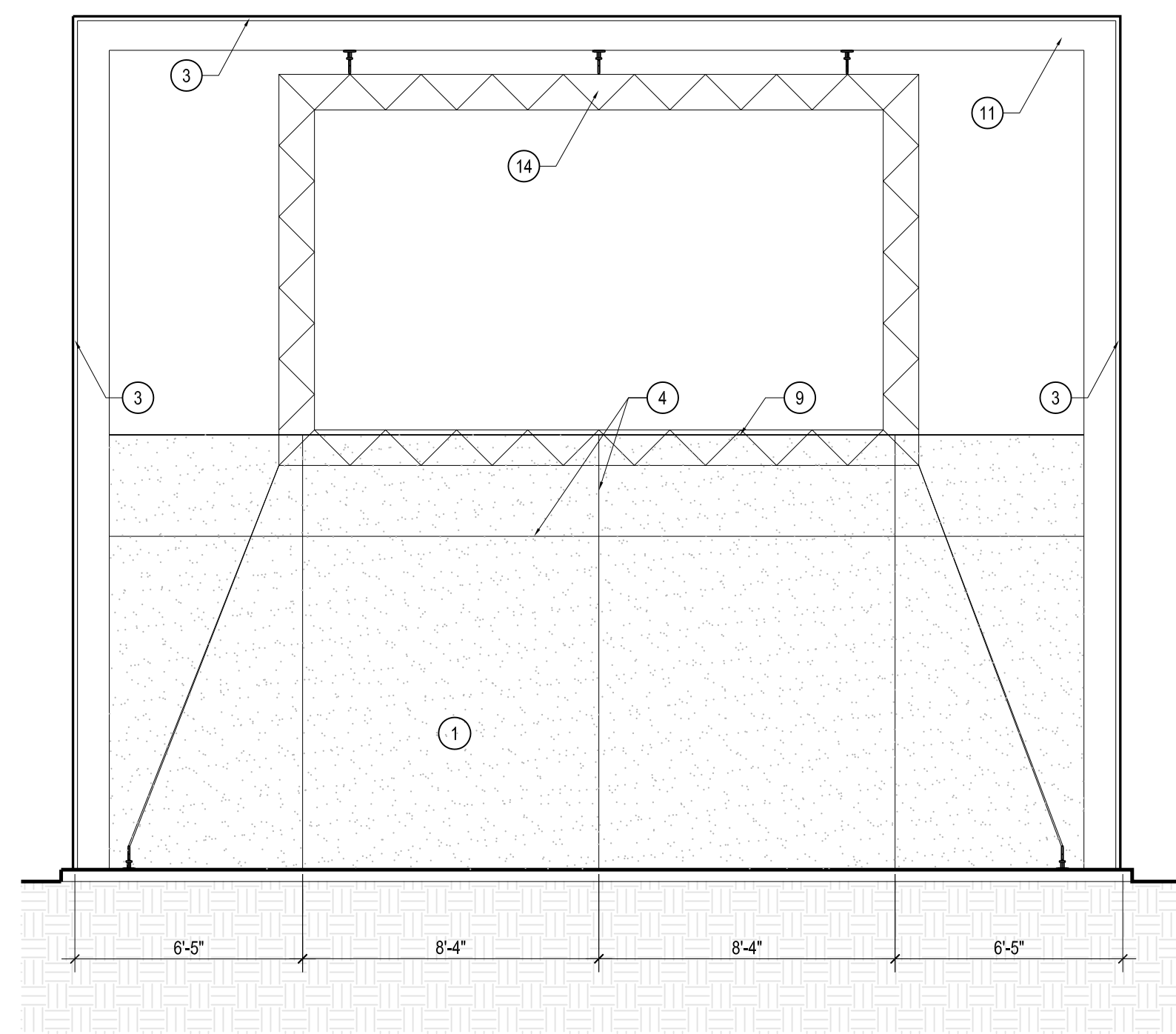


1 WEST ELEVATION
SCALE: 1/4" = 1'-0"



2 NORTH ELEVATION
SCALE: 1/4" = 1'-0"

GENERAL NOTES

1. DIMENSIONS TO FACE OF CMU OR FRAME UNLESS CLEARANCE IS CRITICAL
2. REFER TO FINISH PLAN FOR ADDITIONAL FINISH INFORMATION

SPECIFIC NOTES

- 1 SAND TEXTURED STUCCO, EXP-1
- 2 NOT USED
- 3 FIBER REINFORCED HYBRID SIDING OVER BLOCKING OVER STEEL COLUMN, FINISH: RES-2, SEE FINISH LEGEND ON SHEET A2.2
- 4 STUCCO CONTROL JOINT, TYP.
- 5 NOT USED
- 6 NOT USED
- 7 NOT USED
- 8 NOT USED
- 9 METAL COPING, EXP-2
- 10 SAND TEXTURED STUCCO, EXP-2
- 11 CLEAR ANODIZED ALUMINUM BRAKE METAL
- 12 NOT USED
- 13 NOT USED
- 14 16 X 9' PROJECTION SCREEN AND FRAME WITH REAR PROJECTION, PROJECTOR W505 WITH 15 DEGREE LENS SHIFT. BASIS OF DESIGN: OPEN AIR CINEMA AND OPTOMA
- 15 CONCRETE SLAB, FINISH: CONC. SEE STRUCTURAL DWGS.

NOTE:
SEE FINISH SCHEDULE ON SHEET A2.3 FOR ADDITIONAL FINISH INFORMATION

Wannemacher Jensen Architects, Inc.
180 Mirror Lake Drive North
St. Petersburg, Florida 33701-3214
(727) 822-5566 fax (727) 822-5475
AA0002277

THE ARCHITECT'S COMMON LAW COPYRIGHT AND OTHER PROPERTY RIGHTS ARE HEREBY RESERVED. NO PART OF THIS DOCUMENT OR ANY SPECIFICATIONS PRODUCED BY THE ARCHITECT, ENGINEER OR ARCHITECT-ENGINEER OR ANY OTHER PROFESSIONAL PERSON SHALL BE REPRODUCED OR TRANSMITTED IN ANY FORM OR BY ANY MEANS, ELECTRONIC OR MECHANICAL, INCLUDING PHOTOCOPYING, RECORDING, OR BY ANY INFORMATION STORAGE AND RETRIEVAL SYSTEM, WITHOUT THE WRITTEN PERMISSION OF THE ARCHITECT, ENGINEER OR ARCHITECT-ENGINEER. THIS PERMISSION IS LIMITED TO THE REPRODUCTION OF THIS DOCUMENT FOR THE EXCLUSIVE USE OF THE CLIENT AND IS NOT TO BE REPRODUCED OR TRANSMITTED IN ANY FORM OR BY ANY MEANS, ELECTRONIC OR MECHANICAL, INCLUDING PHOTOCOPYING, RECORDING, OR BY ANY INFORMATION STORAGE AND RETRIEVAL SYSTEM, WITHOUT THE WRITTEN PERMISSION OF THE ARCHITECT, ENGINEER OR ARCHITECT-ENGINEER.



Jason Jensen
Jason Jensen, AIA
AR 94244

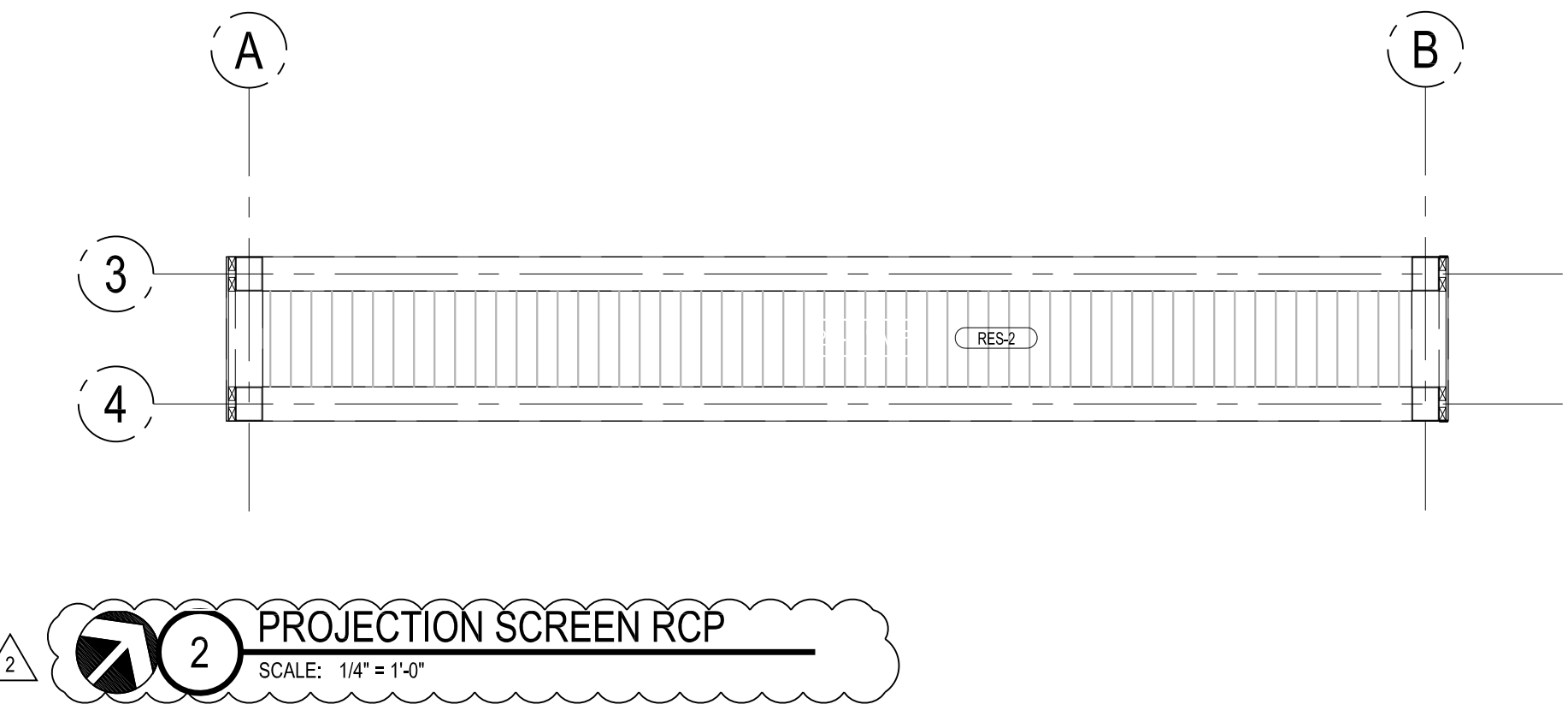
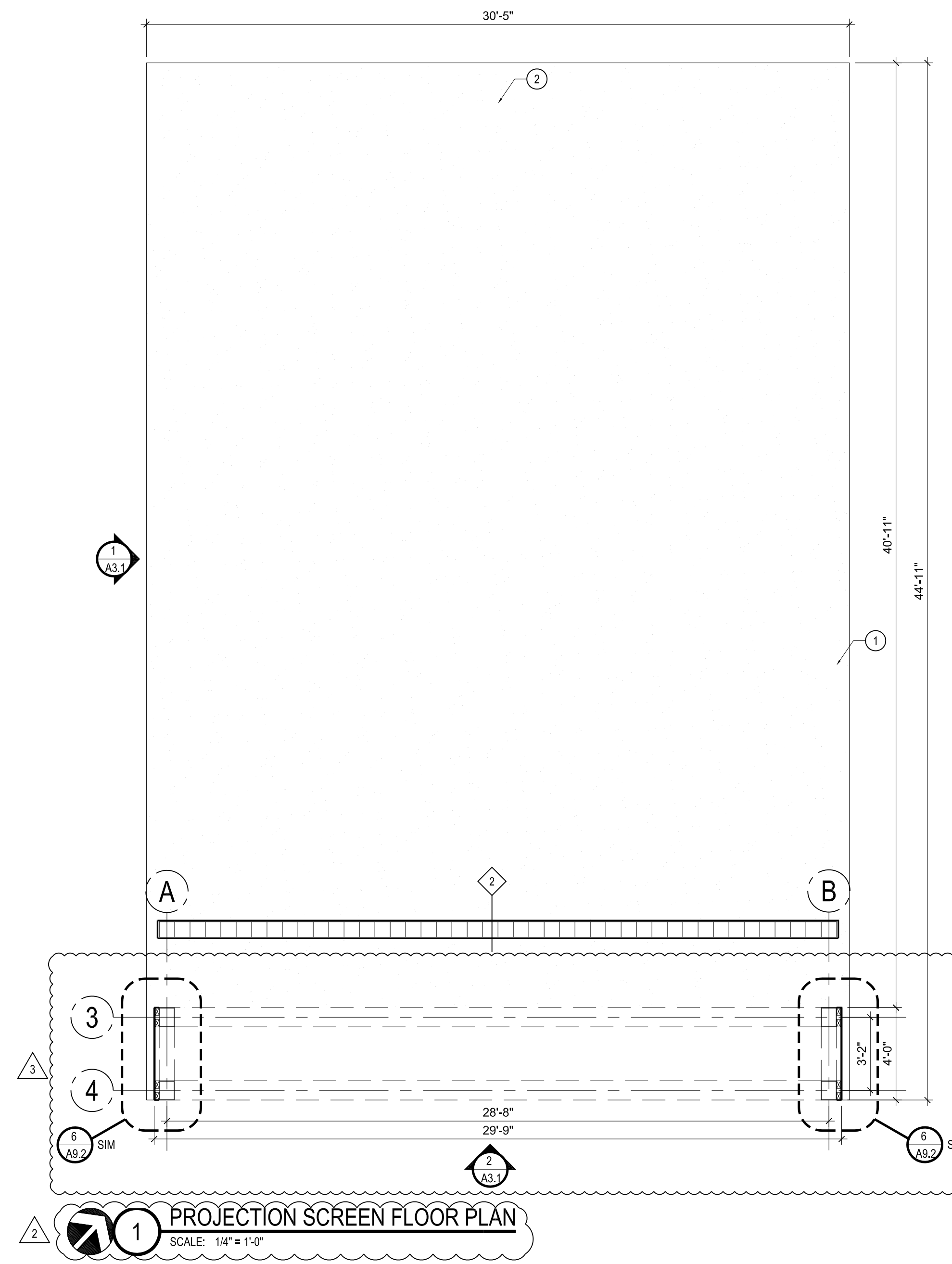
SIMS PARK IMPROVEMENT
CITY OF NEW PORT RICHEY
New Port Richey, FL 34652

Project Number
1451

Distribution
ISSUE DATE
PERMIT DOCUMENT SET 04-14-2015

CITY COMMENTS/
ADDENDUM 1 05-12-2015
3 VE ISSUED FOR PRICING 06-12-2015

Exterior Elevations,
Sections - Projection
Screen Frame
A3.3



LEGEND		PARTITION TYPE	
1		7/8" STUCCO OVER 8" CMU REINFORCED BLOCK	
2		7/8" STUCCO ON BOTH SIDES OVER 8" CMU REINFORCED BLOCK	
3		8" CMU REINFORCED BLOCK, WITH 3/16" CERAMIC TILE OVER BLOCK FILLER ON ONE SIDE AND PAINTED ON THE OTHER SIDE	
4		NOT USED	
5		PAINTED 8" CMU REINFORCED BLOCK	
6		PAINTED 6" CMU REINFORCED BLOCK	

DRAWING LEGEND	
	ROOM NUMBER
	ROOM NAME
	ELEVATION NUMBER
	LOCATION SHEET
	DOOR NUMBER - SEE SHEET A7.1
	GLAZING ELEVATIONS - SEE SHEET A7.1
	SECTION NUMBER
	LOCATION SHEET
	DETAIL NUMBER
	LOCATION SHEET

SPECIFIC NOTES	
1	CONCRETE SLAB. FINISH: CONC. SEE STRUCTURAL DWGS.
2	PROJECTOR STAND MOUNTED TO METAL POLE AND SECURED TO SLAB.

FINISH LEGEND	
CONCRETE FLOORING	
CONC	LIGHT BROOM FINISHED, CLEAR SEALED CONCRETE
CLADDING	
RES-2	RESYSTA (3/4" FIBER REINFORCED HYBRID HOLLOW, 4 CHANNEL SIDING) COLOR: STAIN C-14 PRODUCT NUMBER: FHC008055144(RES-2) CONTACT: DELILAH ROSS (727) 612-4009

THE ARCHITECT'S COMMON LAW COPYRIGHT AND OTHER PROPERTY RIGHTS ARE HEREBY RESERVED. NO PART OF THIS DOCUMENT OR THE SPECIFICATIONS PRODUCED BY THE ARCHITECT, ENGINEER OR ARCHITECT-ENGINEER OR ANY OTHER PROFESSIONAL PERSON SHALL BE REPRODUCED OR TRANSMITTED IN ANY FORM OR BY ANY MEANS, ELECTRONIC OR MECHANICAL, INCLUDING PHOTOCOPYING, RECORDING, OR BY ANY INFORMATION STORAGE AND RETRIEVAL SYSTEM, WITHOUT FIRST OBTAINING THE WRITTEN PERMISSION OF THE ARCHITECT, ENGINEER OR ARCHITECT-ENGINEER. THE ARCHITECT, ENGINEER OR ARCHITECT-ENGINEER SHALL BE RESPONSIBLE FOR THE CONSTRUCTION OF THE PROJECT IN ACCORDANCE WITH THE STANDARDS OF THE ARCHITECTS OR ENGINEERS OF THE STATE OF FLORIDA AND THE STANDARDS OF THE ARCHITECTS OR ENGINEERS OF THE STATE OF FLORIDA. THE ARCHITECT, ENGINEER OR ARCHITECT-ENGINEER SHALL BE RESPONSIBLE FOR THE CONSTRUCTION OF THE PROJECT IN ACCORDANCE WITH THE STANDARDS OF THE ARCHITECTS OR ENGINEERS OF THE STATE OF FLORIDA AND THE STANDARDS OF THE ARCHITECTS OR ENGINEERS OF THE STATE OF FLORIDA.



Jason Jensen, AIA
AR 94244

Wannemacher Jensen Architects, Inc.
180 Mirror Lake Drive North
St. Petersburg, Florida 33701-3214
(727) 822-5566 fax (727) 822-6475
AA0002277
© Wannemacher Jensen Architects, Inc.

SIMS PARK IMPROVEMENT
CITY OF NEW PORT RICHEY
New Port Richey, FL 34652

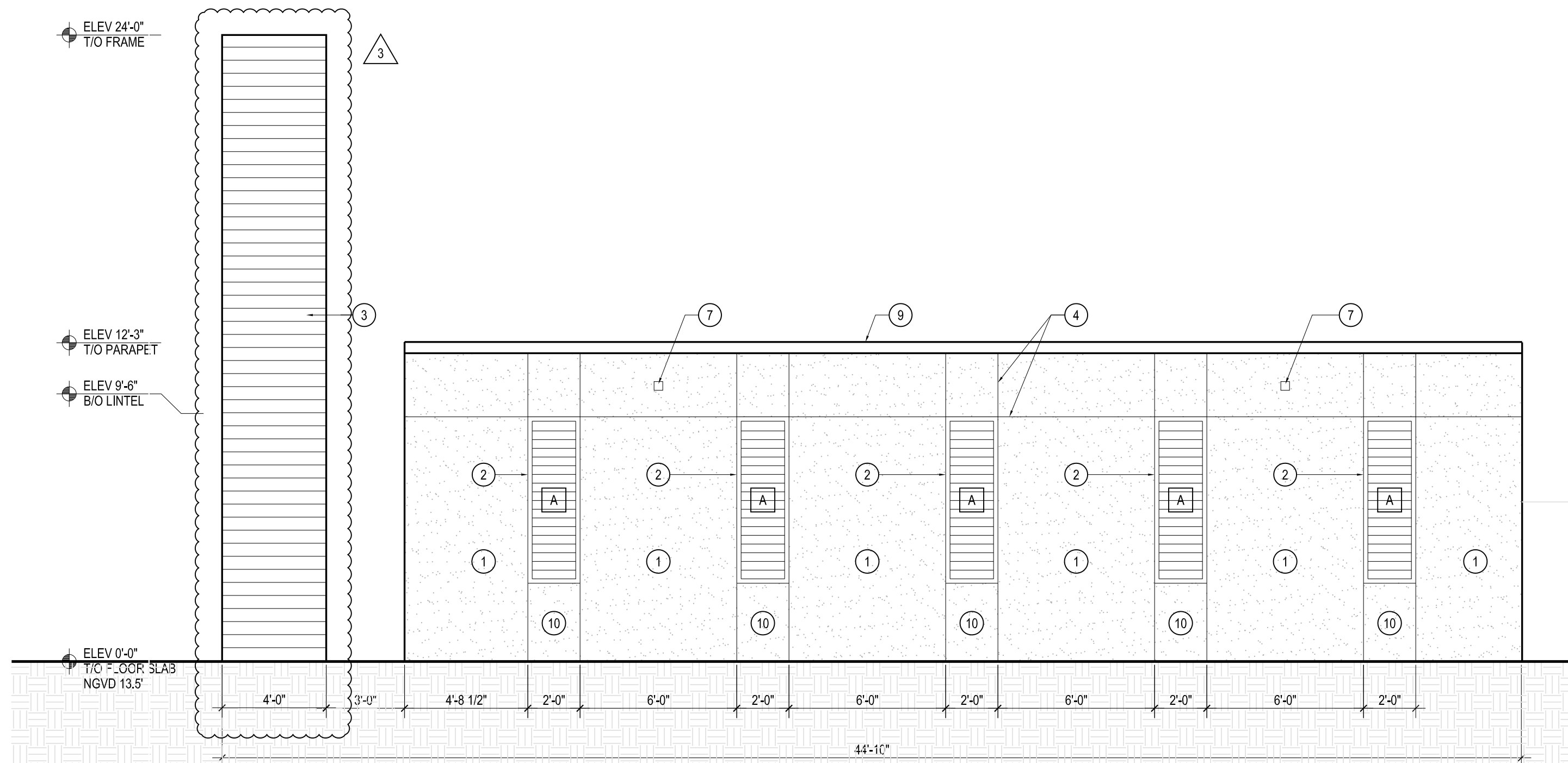
Project Number
1451
Distribution

ISSUE DATE
PERMIT DOCUMENT SET 04-14-2015

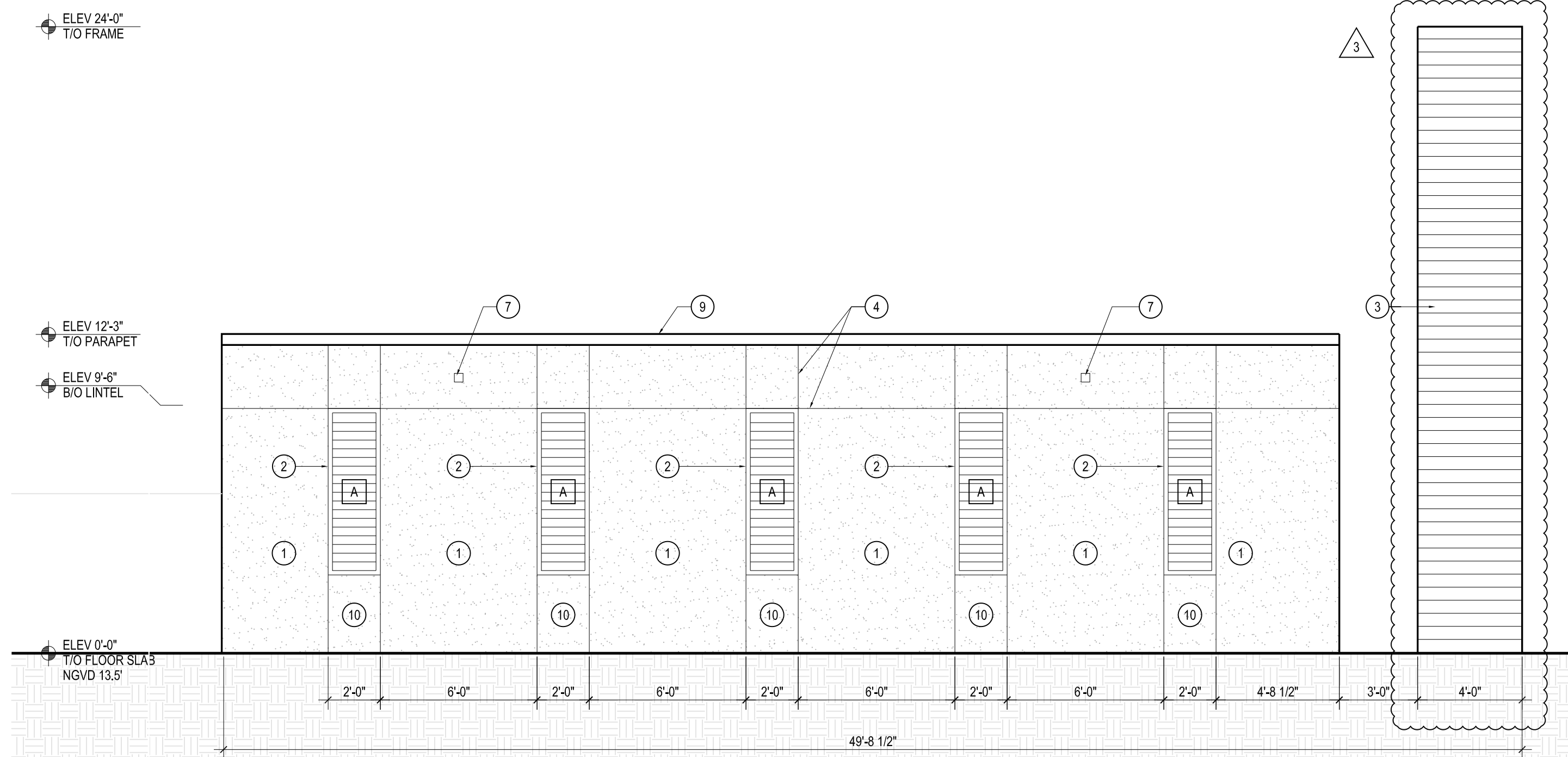
CITY COMMENTS/
ADDENDUM 1 05-12-2015
ISSUED FOR PRICING 06-12-2015

Floor Plan + RCP
Projection Screen Frame

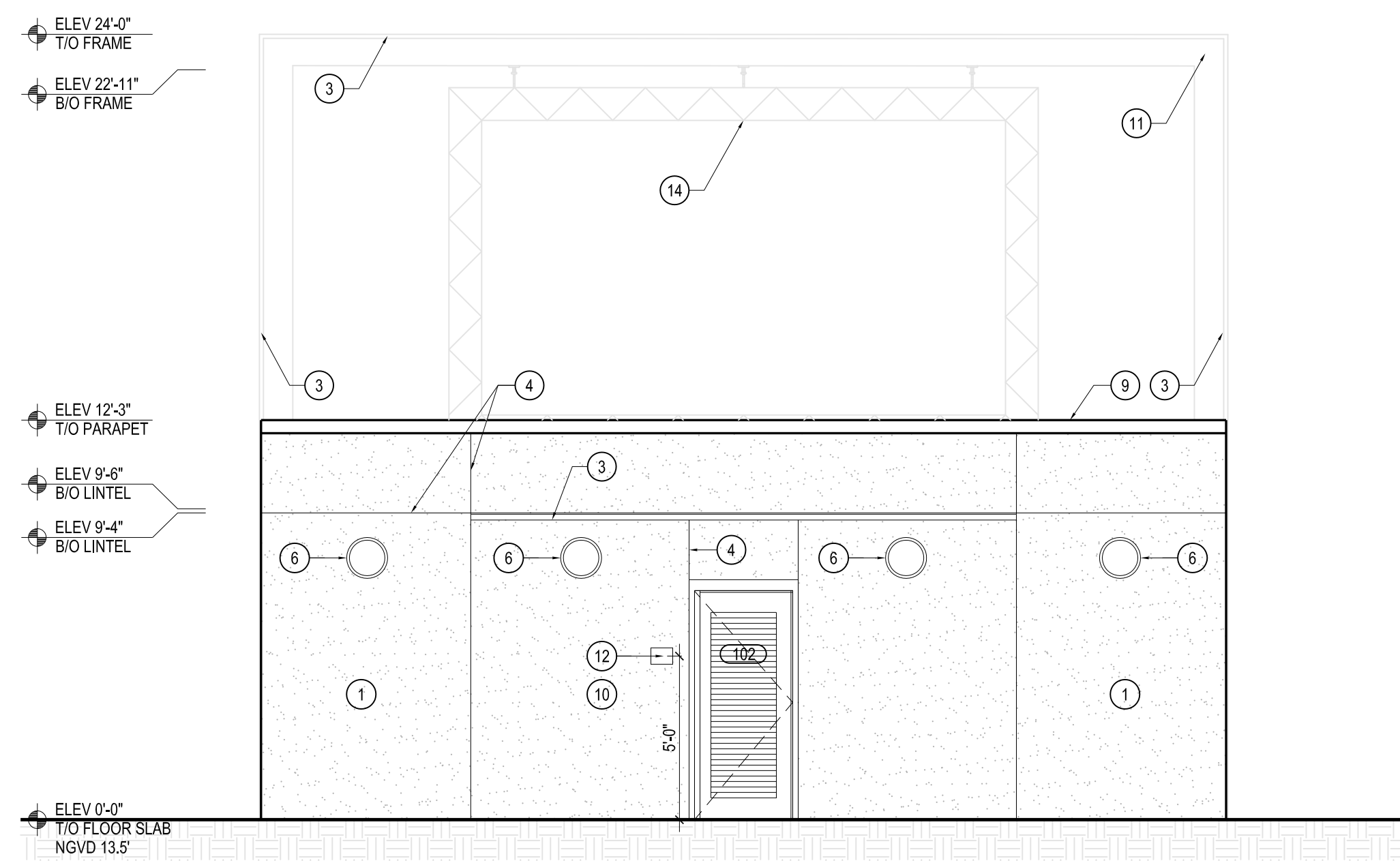
A2.3



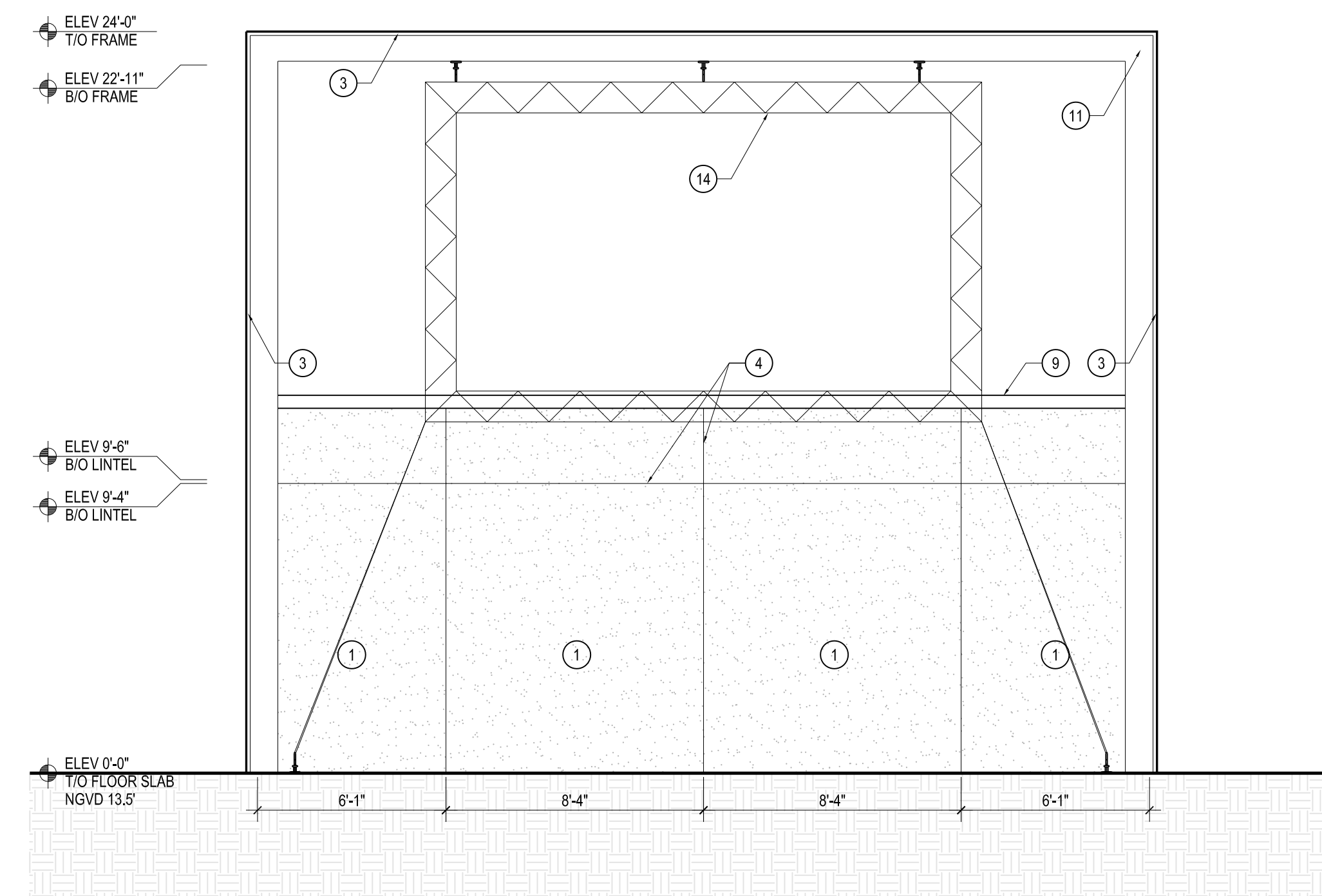
1 WEST ELEVATION
SCALE: 1/4" = 1'-0"



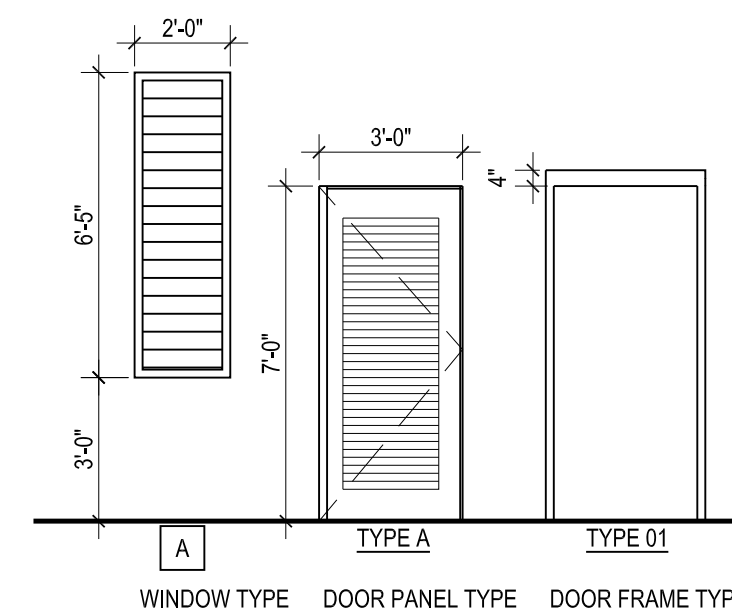
3 EAST ELEVATION
SCALE: 1/4" = 1'-0"



2 NORTH ELEVATION
SCALE: 1/4" = 1'-0"



4 SOUTH ELEVATION
SCALE: 1/4" = 1'-0"



GENERAL NOTES

1. DIMENSIONS TO FACE OF CMU OR FRAME UNLESS CLEARANCE IS CRITICAL
2. REFER TO FINISH PLAN FOR ADDITIONAL FINISH INFORMATION

SPECIFIC NOTES

- 1 SAND TEXTURED STUCCO, FINISH: EXP-1
- 2 FIXED DRAINABLE SIGHTPROOF HURRICANE LOUVER, BASIS OF DESIGN AWW, FINISH COLOR: MEDIUM BRONZE
- 3 FIBER REINFORCED HYBRID SIDING OVER BLOCKING OVER STEEL COLUMN, FINISH: RES-2. SEE FINISH LEGEND ON SHEET A2.2
- 4 STUCCO CONTROL JOINT, TYP.
- 5 NOT USED
- 6 LIGHT FIXTURE, TR15 FROM COOPER LIGHTING, COLOR: BRONZE SEE ELECTRICAL DWGS.
- 7 OVERFLOW ROOF DRAIN THRU-WALL SCUPPER, MIN. 1" ABOVE ROOF MEMBRANE. AT PERIMETER, REFER TO DETAIL 3 ON SHEET A9.2 AND PLUMBING DWGS.
- 8 NOT USED
- 9 METAL COPING, FINISH: EXP-2
- 10 SAND TEXTURED STUCCO, FINISH: EXP-2
- 11 STEEL COLUMN, PAINTED, COLOR: TBD. SEE STRUCTURAL DWGS.
- 12 ADA TOILET ROOM SIGN, SEE ROOM IDENTIFICATION SIGNAGE SCHEDULE FOR DETAILS.
- 13 NOT USED
- 14 15' X 9' PROJECTION SCREEN AND FRAME WITH REAR PROJECTION, PROJECTOR W505 WITH 15 DEGREE LENS SHIFT, BASIS OF DESIGN; OPEN AIR CINEMA AND OPTOMA

NOTE:
SEE FINISH SCHEDULE ON SHEET A2.2 FOR ADDITIONAL FINISH INFORMATION

DOOR SCHEDULE											
NUMBER	PANEL TYPE	FRAME TYPE	PANEL MATERIAL	PANEL FINISH	FRAME MATERIAL	FRAME FINISH	DOOR HEIGHT	DOOR THICKNESS	DOOR WIDTH	HARDWARE GROUP #	COMMENTS
100	A	D1	HM	PAINTED	HM	PAINTED	7'-0"	2"	3'-0"	1	LOUVERED DOOR
101	A	D1	HM	PAINTED	HM	PAINTED	7'-0"	2"	3'-0"	1	LOUVERED DOOR
102	A	D1	HM	PAINTED	HM	PAINTED	7'-0"	2"	3'-0"	2	LOUVERED DOOR

NOTE: INCLUDE ADA-COMPLIANT 8 LBS DOOR CLOSERS ON ALL DOORS 100 AND 101

ROOM IDENTIFICATION SIGNAGE SCHEDULE		
COMMENTS	SIGNAGE COPY	COMMENTS
100	WOMEN	PICTOGRAM AND ISA SYMBOL (INTERNATIONAL SYMBOL OF ACCESSIBILITY) LOCATED ON WALL ADJACENT TO DOOR
101	MEN	PICTOGRAM AND ISA SYMBOL (INTERNATIONAL SYMBOL OF ACCESSIBILITY) LOCATED ON WALL ADJACENT TO DOOR
102	JANITOR + PLUMBING	ADA TYPE*

NOTE: TYPICAL ALL ROOM SIGNS - ONE LINE TACTILE LETTERS AND ONE LINE BRAILLE. PANEL SIZE 3" X 9" APPROXIMATELY DEPENDING ON EXTENT OF SIGNAGE COPY

HARDWARE SCHEDULE				
QTY	DESCRIPTION	CATALOG NO.	FINISH	MFR
GROUP 1 -				
3 EA.	HINGE	3CB1 4.5X4.5 NRP	630	IVE
1 EA.	CLASSROOM	ND70PD RHO	626	SCH
1 EA.	SURFACE CLOSER	4040XP SRI	689	LCN
1 EA.	WALL STOP	WS406/407CCV	630	IVE
1 EA.	KICKPLATE	8200 10"x2" LDW B4E	630	IVE
1 SET	SEALS	188S	BLK	ZER
1 EA.	THRESHOLD	65A MSLA-10	AL	ZER
GROUP 2 -				
3 EA.	HINGE	3CB1 4.5X4.5 NRP	630	IVE
1 EA.	DEADBOLT	B660P	626	SCH
1 EA.	OVERHEAD STOP	900S	626	GLY
1 EA.	SEALS	188S	BLK	ZER
1 EA.	THRESHOLD	65A MSLA-10	AL	ZER

EXECUTION:

- 1 **INSTALLATION:**
 - A. ALL HARDWARE SHALL BE APPLIED AND INSTALLED IN ACCORDANCE WITH THE FINISH HARDWARE SCHEDULE. CARE SHALL BE EXERCISED NOT TO MAR OR DAMAGE ADJACENT WORK.
 - B. CONTRACTOR TO PROVIDE A SECURE LOCK-UP FOR HARDWARE DELIVERED TO THE PROJECT BUT NOT YET INSTALLED. CONTROL THE HANDLING AND INSTALLATION OF HARDWARE ITEMS THAT ARE NOT IMMEDIATELY REPLACEABLE, SO THAT THE COMPLETION OF THE WORK WILL NOT BE DELAYED BY HARDWARE LOSSES BOTH BEFORE AND AFTER INSTALLATION.
 - C. NO HARDWARE IS TO BE INSTALLED UNTIL THE HARDWARE MANUFACTURERS HAVE PROVIDED A PRE-INSTALLATION CLASS. THIS IS TO INSURE PROPER INSTALLATION OF THE SPECIFIED PRODUCTS.
- 2 **ADJUSTING AND CLEANING:**
 - A. CONTRACTOR SHALL ADJUST ALL HARDWARE IN STRICT COMPLIANCE WITH MANUFACTURER'S INSTRUCTIONS. PRIOR TO TURNING PROJECT TO OWNER, CONTRACTOR SHALL CLEAN AND MAKE ANY FINAL ADJUSTMENTS TO THE FINISH HARDWARE.
- 3 **PROTECTION:**
 - A. CONTRACTOR SHALL PROTECT HARDWARE AS IT IS STORED ON CONSTRUCTION SITE IN A COVERED AND DRY PLACE.
 - B. CONTRACTOR SHALL PROTECT EXPOSED HARDWARE INSTALLED ON DOORS DURING THE CONSTRUCTION PHASE.
- 4 **KEY CABINET:**
 - A. SET UP AND INDEX ONE (1) KEY CABINET THAT ALLOWS ROOM FOR EXPANSION FOR 150% OF THE NUMBER OF KEYS FOR THE PROJECT.

HARDWARE SCHEDULE:

A. THE FOLLOWING SCHEDULE IS FURNISHED FOR WHATEVER ASSISTANCE IT MAY AFFORD THE CONTRACTOR; DO NOT CONSIDER IT AS ENTIRELY INCLUSIVE. SHOULD ANY PARTICULAR DOOR OR ITEM BE OMITTED IN ANY SCHEDULED HARDWARE GROUP, PROVIDE DOOR OR ITEM WITH HARDWARE SAME AS REQUIRED FOR SIMILAR PURPOSES. QUANTITIES LISTED ARE FOR EACH PAIR OF DOORS; OR FOR EACH SINGLE DOOR.

B. THIS HARDWARE SCHEDULE PREPARED BY:
ALLEGIION, PLC
3451 TECHNOLOGICAL AVE, SUITE 7
ORLANDO FL 32817
PH: 407-571-2000
FAX 407-571-2006

THE ARCHITECTS COMMON LAW COPYRIGHT AND OTHER PROPERTY RIGHTS ARE HEREBY RESERVED. NO PART OF THIS DOCUMENT OR THE SPECIFICATIONS PROVIDED BY THE ARCHITECT, ENGINEER OR CONSULTANT SHALL BE REPRODUCED OR TRANSMITTED IN ANY FORM OR BY ANY MEANS, ELECTRONIC OR MECHANICAL, WITHOUT THE WRITTEN PERMISSION OF THE ARCHITECT, ENGINEER OR CONSULTANT. THIS AGREEMENT IS MADE A PART OF THE CONTRACT DOCUMENTS. THE ARCHITECTS OR ENGINEERS TO THE BEST OF THEIR KNOWLEDGE AND BELIEF, HAVE COMPLIED WITH THE APPLICABLE PROFESSIONAL STANDARDS AS DETERMINED BY THE LOCAL AND STATE BAR COUNCILS.



Jason Jensen, AIA
AR 94244

Project Number
1451

Distribution
ISSUE DATE
PERMIT DOCUMENT SET 04-14-2015

CITY COMMENTS/
ADDENDUM 1 05-12-2015
VE ISSUED FOR PRICING 06-12-2015